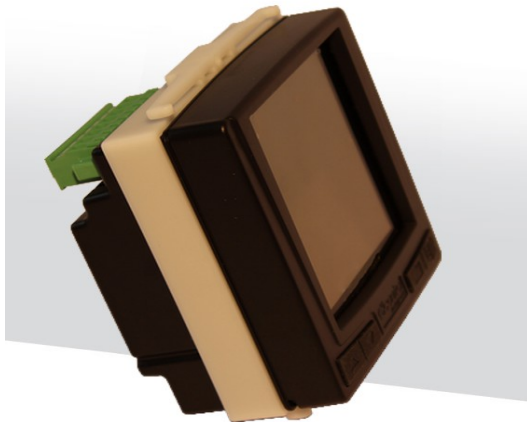


POLAR ENERGY

Precise, reliable and flexible

Panel mounted Energy analyzer Powerfull and flexible



- Reduced dimensions in depth in the panel IP65 front panel
- Switching power supply 90/230 and 90/300 Vac Vdc (+ 24-48 Vdc option)
- Scalable thanks to the plug & play options to insert posteriorly
- 3 measuring channels of voltage up to 600V CAT III with the precision of 0.5%
- 4 distinct current inputs, with 0.5% accuracy
- 6 different electrical systems analyzed (single-phase, two-phase, three-phase 3-wire unbalanced, three-phase 4-wire unbalanced, balanced three-phase 3-wire, three-phase 4-wire balanced)
- Multilingual
- Customizable display, choosing which values display in rotation in the lower part and rotating it 90 ° in relation to the comfort of reading

Technical Data

1. Internal dimensions 96x96x58 mm or 96x96x96 mm (with option modules)
2. Overall dimensions 96x105x40 mm or 96x105x77 mm (with option modules)
3. Safety 600V CAT III IP protection degree IP65 front, IP30 inside panel
4. Weight 320g + 35g per option
5. Display LCD dot matrix with white backlight
6. Languages English- Spanish – Italian – German – French
7. Electrical connection Screw terminals
8. Communication 485 (option)
9. Working temperature from -10 to +55 °C
Umidity Max 95%
10. AC Power supply 90-230V ±10% 50-60Hz 8VA
DC Power supply 90-300V ±10% 8W, 12-24V ±10% (option), 48-60V ±10% (option)
11. Consumption 5VA
12. Wires section 2,5mm

Ordering Information

4AARM POLAR ENERGY Basic model

Optional:

- 4ABAE CONVERTER USB/RS485
4A485 OPTION RS485
4AALM OPTION WITH TWO ALARMS
4ADIN OPTION 2 DIGIT
4AVDC OPTION 12-24
41VDC OPTION 48-60 VDC

MEASURING:

Single Phase / Two Phase Systems, Three phase four wire, three phase three wire balanced and non balanced

VOLTAGE (TRMS)

3 channels + neutral channels in common

Direct Phase-Phase Measurements 17-700VAC 40-70Hz, Phase-Neutral 10-400VAC 40-70Hz

Measurements across VT Ratio 1-60000, maximum displayed value 20MV

Permanent load 800VAC

10V Phase-Neutral Sensitivity, 17 Phase-Phase

Cable section 2.5mm²

CURRENT (TRMS)

4 channel independent channels with resistance

Consumption Scales 2

Direct Measures Not Available

Maximum measurable current 8A

Measurements through TA Relation 1: 60000, maximum displayed value 500kA

Overload overload 10A

Transient overload 50A 1 sec

Sensitivity 10mA

Cable section 2.5 mm²

POWERS

For phase Overall 500mS

Voltage drops > 500mS

Overload > 500mS

Duncan Instruments Canada Ltd.

Phone: 416-742-4448 Fax: 416-749-5053

sales@duncaninstr.com

www.duncaninstr.com