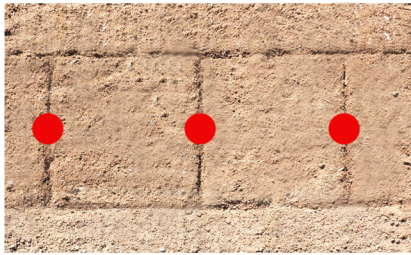
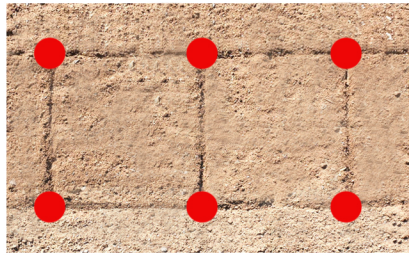


GRIDDER PLANTING CHART: *NEVERSINK FARM*



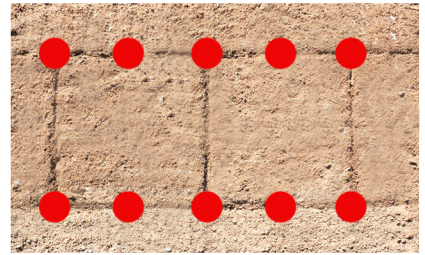
1X2

cucumber, squash,
zucchini, tomato



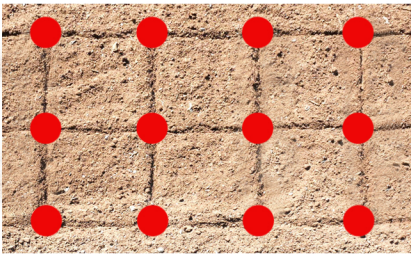
2X2

kale, chard, big celery



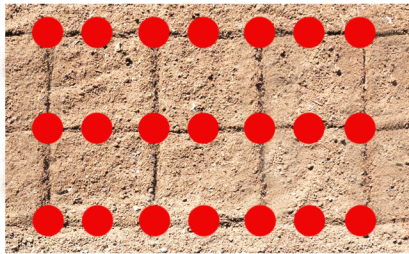
2X3

chard, big scallion



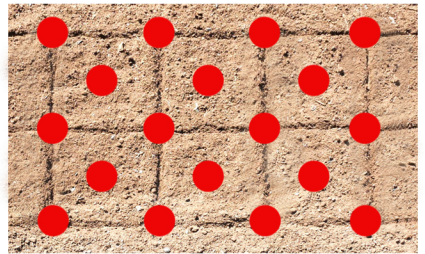
3X3

lettuce heads, celery,
basil, dandelion greens



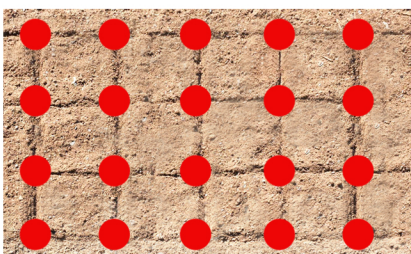
3X5

beets, parsley, leeks,
cilantro, onions



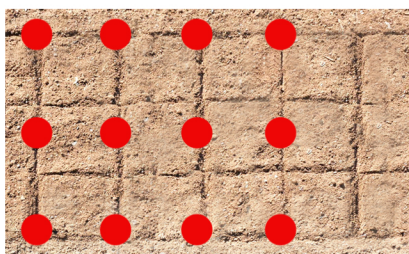
3X3 offset

thyme, spinach, tatsoi,
tight winter plantings



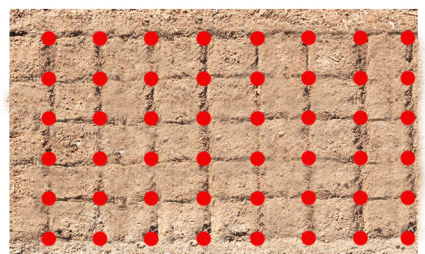
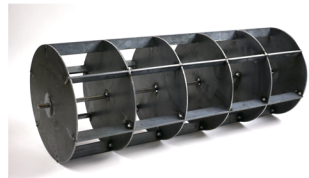
4X4

salanova lettuce mix,
beets, raddichio, garlic



3X4

lettuce heads, beets,
onions



6X6

spinach, baby greens,
layout for paperpot