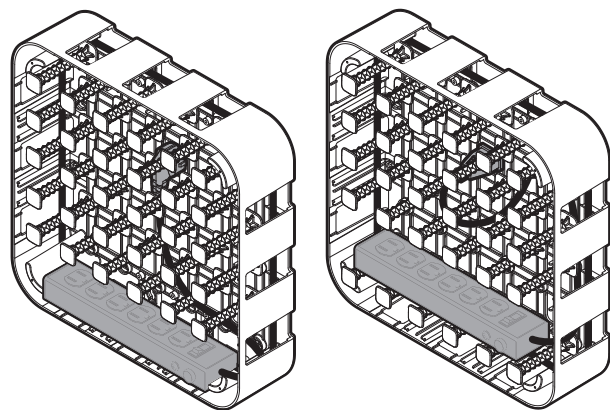


WARNING Ensure that your Wire Wonder is securely fastened to the wall to avoid injury.

WARNING If using a power strip or surge protector, please ensure that it is switched off before proceeding.

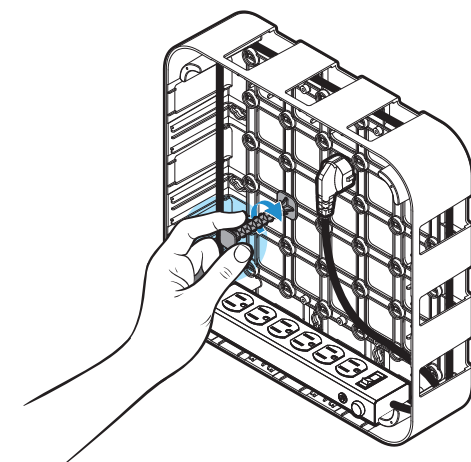
STEP 8

If using a power strip or surge protector within the Wire Wonder, set it at the bottom of the back box. For longer power strips, create a makeshift shelf using the included cable organizer pegs. Route the power strip's power cable throughout the back cage as needed and plug it into the wall outlet. Visit www.wire-wonder.com for a list of recommended power strips and surge protectors.



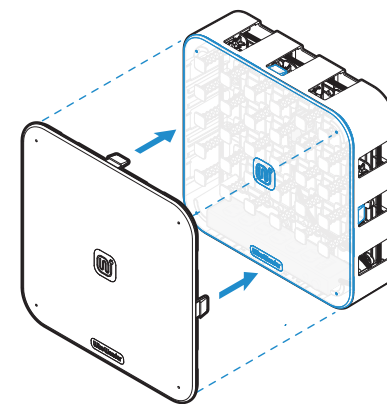
STEP 9

With the power strip switched off, begin plugging in cables and routing them throughout the back box. Use the 36 included cable organization pegs to create the ideal routes for the cables in your setup. To install a peg, align it with the peg slot on the back box, insert it, and rotate it clockwise 90 degrees to lock it in position. Route cables out any of the 12 side openings to their desired locations. Be sure to check out our Cable Organizer Tips for some creative ideas!



STEP 10

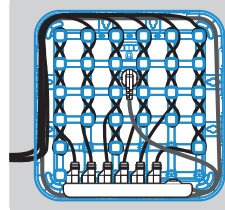
If using a power strip or surge protector, switch it on. Align the snaps on the front cover with the middle openings on the side of the back box and push the front cover into place. Installation is now complete. Enjoy!



CABLE ORGANIZER TIPS:

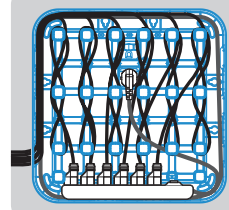
Wire Wonder is designed to adapt to your specific needs. Utilize the included cable organizer pegs to create the ideal cable routes for your setup. Several methods are outlined below to give you some ideas.

BASKETWEAVE 1 Recommended



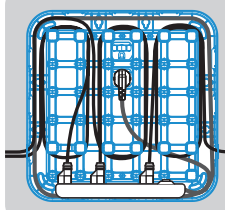
The best method to keep cables separated. Great for 4-6 cables.

BASKETWEAVE 2



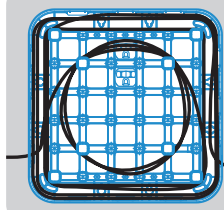
Similar to Basketweave 1, but creates less bends in your cables. Great for 4-6 cables.

LOOP 1



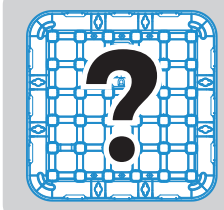
Recommended for cables that won't bend easily. Great for 2-4 cables.

LOOP 2



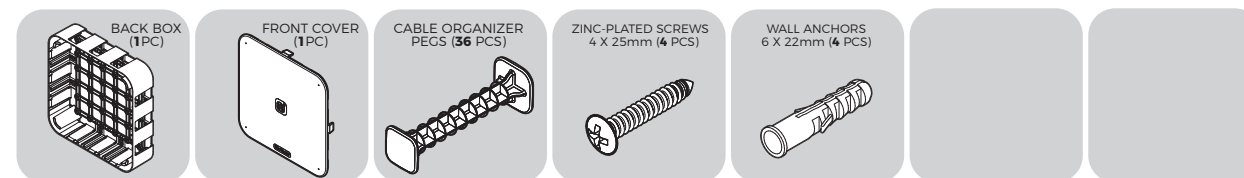
Wrap longer cables around the perimeter of the enclosure. Great for 1-4 cables.

BE CREATIVE



The possibilities are endless!

INCLUDED COMPONENTS:



If any of these components are missing, please contact us at support@wire-wonder.com

Looking for an even more professional way to organize your cables? Check out the Wire Wonder PRO at www.wire-wonder.com/pro

Take control of your wires.



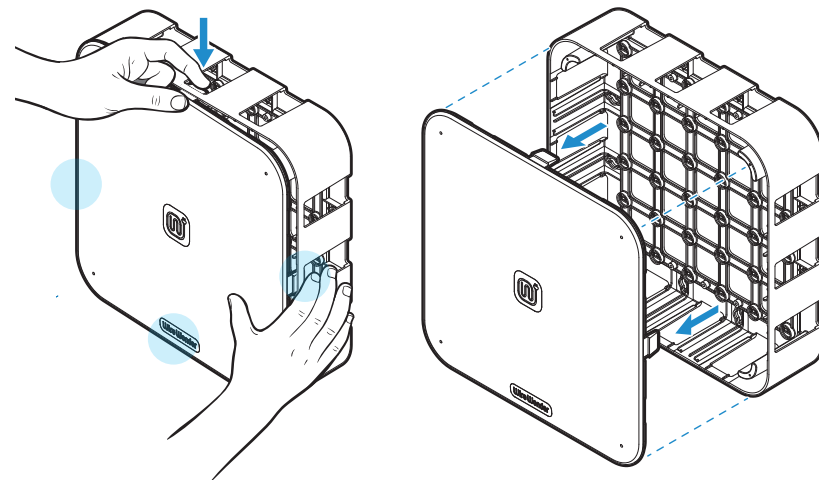
THE ULTIMATE CABLE ORGANIZER
Installation Guide

- WARNING** DO NOT support the Wire Wonder using cables plugged into a wall outlet.
- WARNING** If placing a power adaptor or other powered device inside the Wire Wonder, check the device's user manual before doing so to make sure it is safe for use in an enclosed space.

NOTE: Depending on your setup, you may need to install cables inside the Wire Wonder before mounting it to the wall, or vice versa. These instructions are for installing the Wire Wonder first, then installing the cables. Follow steps as needed.

STEP 1

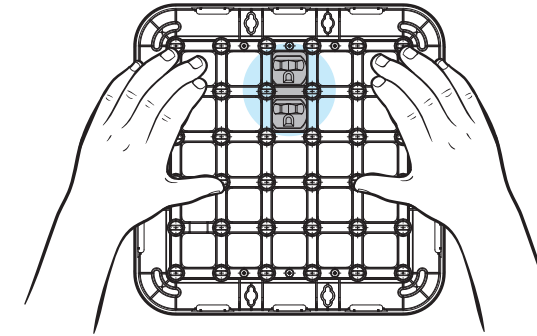
Remove the front cover from the back box by disengaging the snaps located at the center of each side of the enclosure. To do this, firmly press on the top snap and one of the side snaps while simultaneously pulling the front cover away from the back box. Repeat this with the two remaining snaps to completely remove the front cover. Set the cover aside for later.



NOTE: Wire Wonder is recommended to be mounted on a wall, desk, or other suitable surface, but can also be placed on a flat surface. **If you are not mounting your Wire Wonder, proceed to Step 8.** If you are wall mounting your Wire Wonder, it can be mounted directly over an existing wall outlet. Consider cable length before installing.

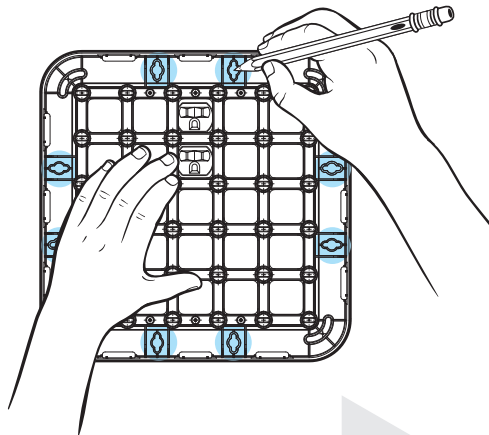
STEP 2

Hold the back box up to the surface and position it where it will be mounted. If mounting over a wall outlet, ensure that the power cable for the power strip can be plugged in and routed efficiently. Any of the back box openings can be used for the power outlet.



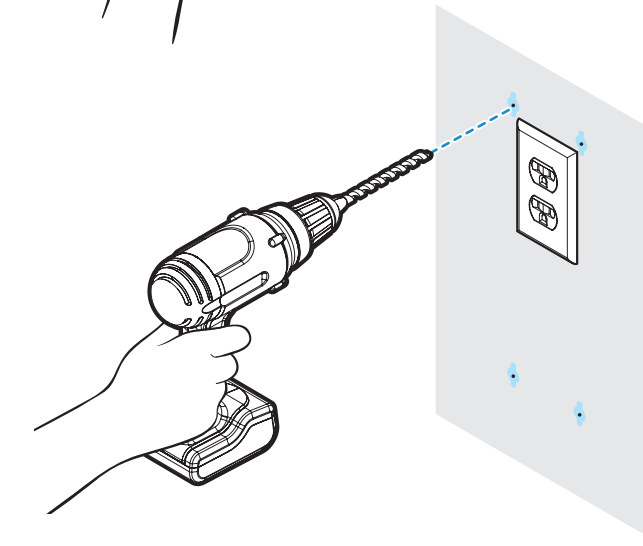
STEP 3

There are eight keyhole slots on the back box that can be used for mounting. It is recommended that a minimum of four are used to properly support the enclosure. Use a pencil to mark four locations on the wall for the included wall anchors to be installed. Verify the marked locations align with the desired mounting position. Remove the back box from the wall and set it aside.



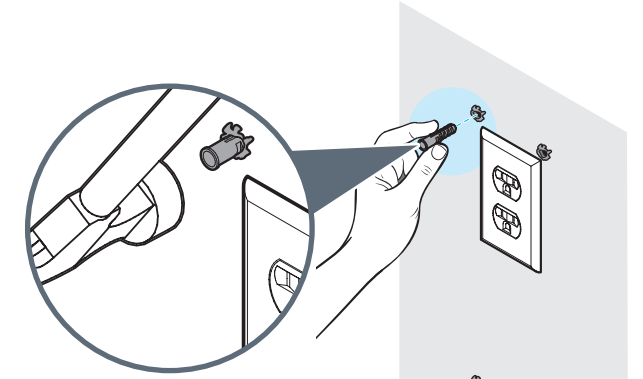
STEP 4

Using a powered screwdriver with a 5/32" or similar drill bit, drill a pilot hole into each of the four marked locations. Alternatively, you can create a pilot hole using a hammer and a nail with a similar diameter to the skinny end of the wall anchor. **Do not create a pilot hole that is larger than the wall anchor itself.**



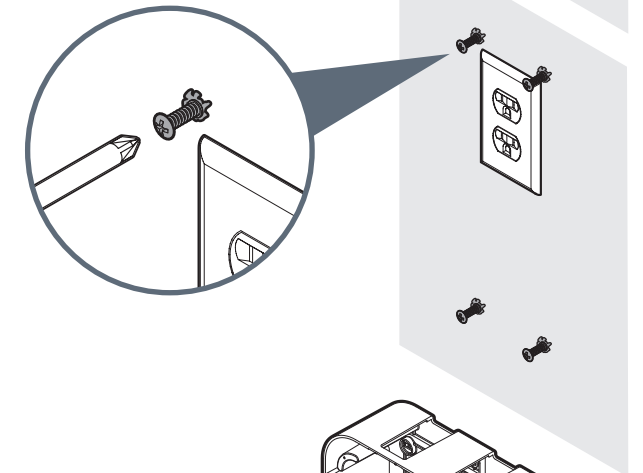
STEP 5

Place the wall anchor over the pilot hole and firmly push it straight into the wall with your hand until it is flush with the wall. You may need to **lightly** tap it with a hammer to make it flush with the wall. **CAUTION: Hitting the wall anchor too hard with the hammer will cause it to break.**



STEP 6

Drive the four included #4 x 25mm screws a little more than halfway into the wall anchors with a screwdriver. Leave enough room for the back box to be set onto the screws and aligned.



STEP 7

Set the back box onto the partially installed screws and align it so that the head of each screw will be able to catch onto the back plane of the back box. Finish driving the four #4 x 25mm screws into the wall anchors. Ensure the head of each screw catches onto the back box and firmly holds it against the wall.

