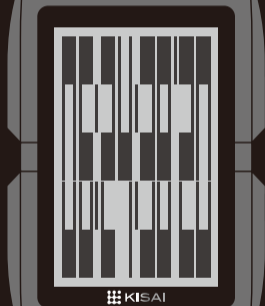




Change the way you think about time

UPLOAD

INSTRUCTION MANUAL



..... Button A

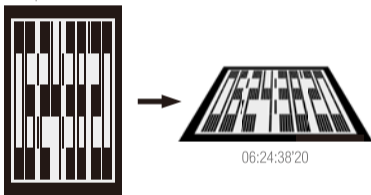
..... Button B

..... USB

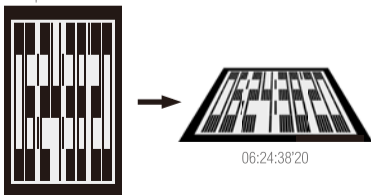
1. How to read the time

- This watch uses an LCD “always on” display to show the time.
- You can illuminate the display for a short time with the LED backlight by pressing button A.
- The time in hours, minutes, seconds and milliseconds is displayed digitally on the screen. At first glance the time looks like blocks and lines but if you look at an angle, you can read the time easily.

Example 1:



Example 2:



2. How to read the date

- Press button B to display the date. The date is displayed digitally.
- You can change the layout of the date to show one of three different formats: YYYY.MM.DD, MM.DD.YYYY or DD.MM.YYYY
- You can illuminate the display for a short time with the LED backlight by pressing button A.
- At first glance the date looks like blocks and lines but if you look at an angle, you can read the date easily.
- The display will change back to time mode after a short time.

Example 1:



2012 May 23rd

3. How to check the alarm time

- Press button B twice to display the alarm time. The PM indicator will be displayed to indicate that the alarm time is set to PM. (see example below)
- If the alarm is off, the display will show OFF. (see example below)
- When the alarm sounds, you can turn it off by touching any button.

Example 1:
alarm time 07:30 PM alarm on



PM indicator

Example 2:
alarm off



4. How to set the date and time

- Hold button B for 3 seconds to enter setting mode.
Note: after 10 seconds of inactivity, setting mode will deactivate.

I. Setting the year

- The year digits will flash when you are in year setting mode.
- Press button A to increase the year as required.
- Hold button A to increase the years more quickly.
- Press button B to confirm and move to the month.

2012



II. Setting the month

- The month digits will flash when you are in month setting mode.
- Press button A to increase the month as required.
- Hold button A to increase the months more quickly.
- Press button B to confirm and move to the date.

May



III. Setting the date

- The date digits will flash when you are in date setting mode.
- Press button A to increase the date as required.
- Hold button A to increase the date more quickly.
- Press button B to confirm and move to the date format.



IV. Setting the date layout

- The layout image will flash when you are in date layout setting mode.
- Press button A to change the layout as required.
- Press button B to confirm and move to the hour.



YYYY.MM.DD



MM.DD.YYYY



DD.MM.YYYY

V. Setting the hour

- The hour digits will flash when you are in hour setting mode.
- The PM icon in setting mode indicates that you are setting the time in PM.
- Press button A to increase the hour as required.
- Hold button A to increase the hours more quickly.
- Press button B to confirm and move to the minutes.



VI. Setting the minutes

- The minute digits will flash when you are in minute setting mode.
- Press button A to increase the minutes as required.
- Hold button A to increase the minutes more quickly.
- Press button B to confirm and exit setting mode..

Note: after 10 seconds of inactivity setting mode will deactivate

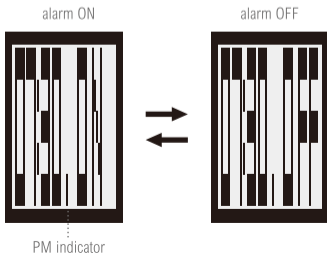


5. How to set the alarm

- Press button B twice to display the alarm time and then hold button B for 3 seconds to enter alarm setting mode.
Note: after 10 seconds of inactivity setting mode will deactivate.

1. Turning the alarm on/off

- Press button A to turn the alarm on or off.
ON or OFF will be shown on the display.
- Press button B to confirm and move to the hour.



II. Setting the alarm hour

- The hour digits will flash when you are in alarm hour setting mode.
- The PM icon in setting mode indicates that you are setting the alarm time in PM.
- Press button A to increase the alarm hour as required.
- Hold button A to increase the alarm hours more quickly.
- Press button B to confirm and move to the minutes.



III. Setting the alarm minutes

- The minute digits will flash when you are in alarm minute setting mode.
- Press button A to increase the alarm minutes as required.
- Hold button A to increase the alarm minutes more quickly.
- Press button B to confirm and exit setting mode.



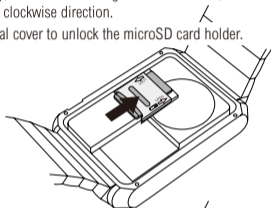
6. How to recharge the battery & connect the microSD card

- This watch uses a USB rechargeable battery.
- The LIR2032 rechargeable battery is replaceable.
- To recharge the battery, remove the USB cap and first connect the USB charging cable to the USB charging jack on the watch.
- Then connect the charging cable to a power source, e.g. your computer.
- When charging, the battery charging indicator will blink.
- When the charging indicator stops blinking, the battery is 90% charged.

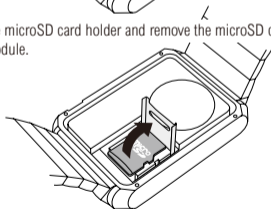
It is advised that you continue to charge the battery for a full 3.5 hours to ensure the battery is 100% charged.

7. How to change the microSD card

- You should use only the screw driver provided when opening the caseback.
- Hold the screwdriver in a vertical position and push down firmly and carefully, so as not to damage the screw heads, unscrewing in a counter clockwise direction.
- Slide the metal cover to unlock the microSD card holder.



- Lift open the microSD card holder and remove the microSD card from the module.



- After changing the microSD card, carefully close the holder and slide the metal cover to lock it back into position.
- When replacing the caseback, be careful not to screw the screws in too tightly otherwise you may damage the screw heads.

8. User information

I. Battery

- This watch uses an LIR2032 rechargeable battery only.
- The LIR2032 rechargeable battery is replaceable.
- Battery lifetime will vary depending on use, but is estimated at approximately 300 charges.
- To maximise battery life you should limit the use of the LED backlight.
- The plug standard input voltage for the LIR2032 battery is DC5V. You should use only the cable provided with the watch when recharging.

II. Warranty

- This watch is covered by a 1 year warranty. This warranty does not cover water damage, accidental damage, neglect or unauthorized repair.

III. Caution

- This watch has limited resistance to water. Please do not use the watch in the shower, for swimming or for other water related activities.
- Items included in the box:
 - Watch
 - USB cable
 - Spare USB cap
 - Screwdriver
 - Instruction Manual

SPECIFICATIONS

Case Materials	Wood
Strap Materials	Wood
Case Dimensions	40 x 59 x 13 mm
Finish	Clear coating
Maximum Fit Wrist Size	220mm (approx.)
Weight	130g
Display	LCD with LED backlight
Battery	LIR2032 rechargeable battery

