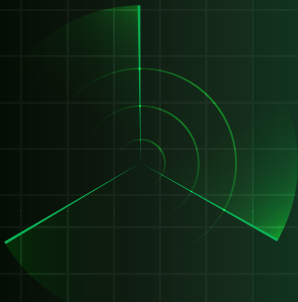




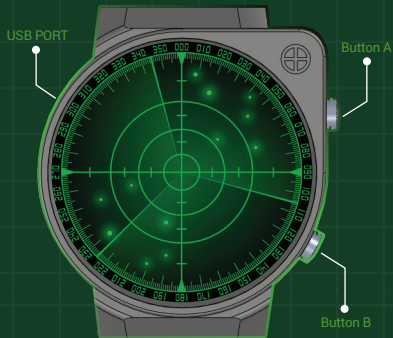
TOKYOFLASH JAPAN®

/RADAR

レーダー



INSTRUCTION MANUAL



7. HOW TO READ THE TIME

- Radar has 2 time display modes: **TURNING & FLASHING**.
- The default mode is TURNING mode.
- To change the time display mode, see section 3.
How to set the time & display mode.
- Press button A to show the time.

TURNING MODE

In **TURNING** mode the LED light will rotate around the radar screen 3 times.

Each time the LED light rotates it leaves 1 segment lit, indicating in turn the [hour], [10 minute group], and [single minutes].

This is known as the 12-5-9 method of time telling.

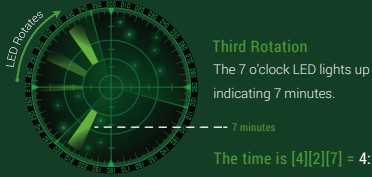
EXAMPLES:

[12] [5] [9] = 12:59

[6] [3] [5] = 6:35

[10] [0] [8] = 10:08

TURNING MODE - EXAMPLE



Note: If the LED light rotates without leaving any LEDs lit, it indicates [0] zero.

FLASHING MODE

In **FLASHING** mode the hour & minute LEDs light up at the same time so you can read the time at a glance.

LED lights indicate the [hour], [10 minute group], and [single minutes].

Time: 6:45



Time: 10:18



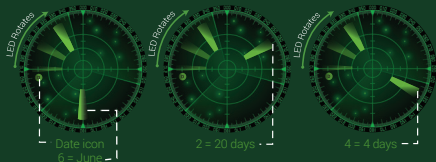
Time 1:07



2. HOW TO CHECK THE DATE & ALARM TIME

- Press button A to change between **TIME** > **DATE** > **ALARM TIME**.
- An icon on the radar screen will indicate the date or alarm time.
- The date or alarm time will be displayed in your chosen display mode: **TURNING** or **FLASHING**.

DATE EXAMPLE [TURNING MODE]



The date can be displayed as [Month > Day] or [Day > Month]
See section 4. How to set the date.

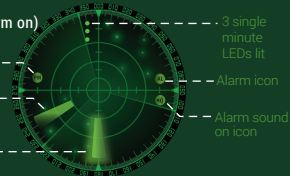
ALARM TIME EXAMPLE [FLASHING MODE]

8:33 PM (Alarm on)

PM icon

8 o'clock LED lit

30 minute LED flashing



3. HOW TO SET THE TIME & DISPLAY MODE

You will set the following options in sequence.

HOUR - - - - **MINUTES** - - - - **MODE** - - - - **ANIMATION**

I. HOUR

- Press & **HOLD** button B to enter setting mode.
- The radar screen will flash the current hour.
- Press button A to change the hour.
- Press button B to confirm and move to the minutes setting.



Hour: 11 AM

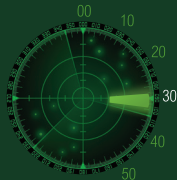


Hour: 7 PM

II. 10 MINUTE GROUP

- The radar screen will flash the current 10 minute group.
- Press button A to change the minutes.
- Press button B to confirm and move to single minutes setting.

10 Minute Group
30 mins



III. SINGLE MINUTES

- The radar screen will flash the current single minutes.
- Press button A to change the single minutes.
- Press button B to confirm and move to display mode setting.

Single minutes
= 4 minutes



IV. DISPLAY MODE

Radar has 2 display modes: **TURNING & FLASHING**

See section 1. How to read the time, for an explanation of each mode.

- The radar screen will flash the current display mode.
- Press button A to change the display mode.
- Press button B to confirm and move to the animation mode setting.

V. ANIMATION

Radar has a light up animation mode. When turned on, the radar screen will light up up every 15 minutes between 6pm & midnight.

- The radar screen will flash the current animation mode.
- Press button A to change the animation mode.
- Press button B to confirm and finish setting.

TURNING MODE



Two vertical LEDs are lit,
one LED rotates.

FLASHING MODE



Two vertical LEDs are lit,
the top LED flashes.

ANIMATION ON



LEDs rotating

ANIMATION OFF



LEDs flashing X

4. HOW TO SET THE DATE

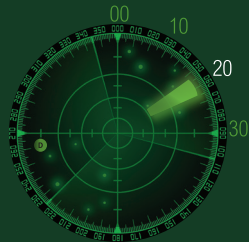
- Press button A twice to show the date.
- Press & HOLD button B to enter date setting mode.
- The D (date) icon will be lit.

I. MONTH

- The radar screen will flash the current month [1-12].
- Press button A to change the month.
- Press button B to confirm and move to the day setting.

II. DAYS 10-30

- The radar screen will flash the current day [00-30].
- Press button A to change the day.
- Press button B to confirm and move to single days setting.



Group of 10 days
20 days

III. SINGLE DAYS

- The radar screen will flash the current single day [1-9].
- Press button A to change the single day.
- Press button B to confirm and move to the date format setting.



Single days
4 days

IV. DATE FORMAT

The date can be displayed as **[Month > Day]** or **[Day > Month]**

- The radar screen will flash the current date format.
- Press button A to change the date format.
- Press button B to confirm and finish date setting.



Month/Day



Day/Month

5. HOW TO SET THE ALARM

- Press button A three times to show the alarm time.
- Press & HOLD button B to enter alarm setting mode.
- The A (alarm) icon will flash.

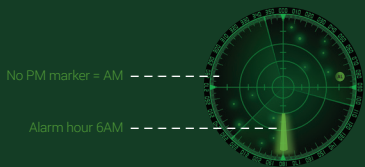
I. ALARM SOUND

- Press button A to turn the alarm sound ON or OFF.
- Press button B to confirm and move to the alarm hour.



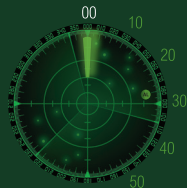
II. ALARM HOUR

- The radar screen will flash the current alarm hour.
- Press button A to change the alarm hour.
- Press button B to confirm and move to the alarm minutes setting.



III. ALARM 10 MINUTE GROUP

- The radar screen will flash the current alarm 10 minute group.
- Press button A to change the alarm minutes.
- Press button B to confirm and move to alarm single minutes setting.



Group of 10 mins
0 mins

IV. ALARM SINGLE MINUTES

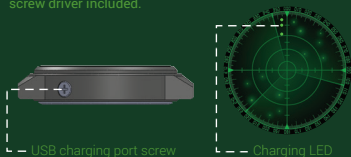
- The radar screen will flash the current alarm single minutes.
- Press button A to change the alarm single minutes.
- Press button B to confirm and finish alarm setting.



Single minutes
9 mins

6. HOW TO CHARGE THE WATCH

This watch can be recharged by connecting the USB charging cable provided to the watch USB port and to your computer's USB port. To open the watch USB port, use the screw driver included.



- When charging, the charging light will animate.
- When the charging light stops animating, the watch is 90% charged.
- It is advised that you continue to charge the watch for the full 3.5 hours to ensure the battery is 100% charged.

Included in the box

- Watch
- USB cable
- Screw driver
- Spare USB cap
- Watch manual



7. USER INFORMATION

I. BATTERY

- Radar uses a PL301517 rechargeable battery.
- The battery should last for 1 month between charges.
- The battery lifetime is expected to be 300 charges.
- Only use the cable provided with the watch for recharging, as it is designed specifically for this watch.

II. WARRANTY

This watch is covered by a 1 year warranty. This warranty does not cover water damage, accidental damage, neglect or unauthorized repair.

III. WATER RESISTANCE

This watch is 3ATM water resistant. This means it is suitable for everyday use and can resist splashes of water & rain but should not get excessively wet. Please do not use the watch in the shower, for washing the dishes, swimming or for other water related activities.

SPECIFICATIONS

Case Materials: Stainless Steel

Strap Materials: Stainless Steel / Leather / Nylon

Case Dimensions: 50mm x 40mm x 11mm

Finish: Brushed & Polished IP Black

Wrist Size: Approx. 150mm - 220mm (adjustable)

Weight: 75-131 grams (depending on strap option)

Display: Digital Tube LED display

Battery: PL301517 rechargeable battery

Water Resistance: 3ATM

CHANGE THE WAY
YOU THINK ABOUT TIME

www.tokyooflash.com