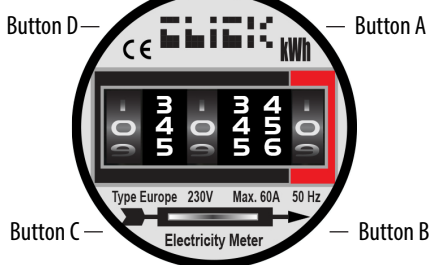


# kWh

## TOKYOFASH JAPAN®

CHANGE THE WAY YOU THINK ABOUT TIME

[www.tokyoflash.com](http://www.tokyoflash.com)



### 1. HOW TO READ THE TIME

- This watch uses revolving discs to show the time.
- The time in hours and minutes is shown horizontally by the numbers in the center of each disc.



Time: 9:30

Time: 12:45

Time: 6:15

### 2. HOW TO SET THE TIME

- Press and hold button C for 2 seconds to enter setting mode.
- Press button C to change the hour as required.
- Press button B to change the group of 10 minutes as required.
- Press button A to change the single minutes as required.
- Press button D to confirm and exit setting mode.

### 3. DISC REVOLUTION FEATURE

- You can initiate a revolution of the discs by pressing button A.

### 4. POWER SAVING MODE

- To minimize power consumption when not using the watch you can activate power saving mode.
- Press button B three times.
- The discs will revolve and stop at 12:00.
- To deactivate power saving mode, press any button and the discs will revolve to show the time.

### 5. DISC CALIBRATION MODE

- If the discs do not stop in the correct position, you can calibrate their position.
- Press and hold button D for 3 seconds to enter calibration mode.
- Press or hold button C to adjust the position of the hour disc to 12.
- Press or hold button B to adjust the position of the groups of 10 minutes disc to 0.
- Press or hold button A to adjust the position of the single minutes disc to 0.
- Press button D to confirm and exit disc calibration mode.
- Set the time (point 2 above).

### 6. BATTERY

- This watch uses 2 x LR44 (or AG13) standard replaceable watch batteries.
- Battery lifetime will vary depending on use but is estimated to last for at least 1 year.
- To maximise battery life, when not using the watch you should activate power saving mode (point 4 above).
- If you notice the discs not moving correctly or not moving at all it is advised that you change the batteries.

### 7. WARRANTY

- This watch is covered by a 2 year warranty. This warranty does not cover water damage, accidental damage, neglect or unauthorized repair.

### 8. WATER RESISTANCE

- This watch is water resistant to 3ATM. Please do not use the watch in the shower, for swimming or for other water related activities.

### 9. SPECIFICATIONS

Display:	Revolving disc display
Case Material:	Alloy
Strap Material:	Leather
Case Dimensions:	44 mm x 44 mm x 15 mm
Finish:	Sandblasted IP black, bronze, gold, silver
Wrist Size:	Approx. 150 mm - 220 mm (adjustable)
Weight:	87 grams
Battery:	2 x LR44 (or AG13) standard replaceable watch batteries

Water Resistance: 3ATM

**Tokyoflash Japan**

Change the way you think about time

[watches@tokyoflash.com](mailto:watches@tokyoflash.com)