

Sample Information

Analyzed by : Dr. Robert S. Pappas
 Analyzed : 7/25/2019 5:34:18 PM
 Sample Type : Essential Oil
 Sample Name : Clary Sage - Helias
 Sample ID : DOB1003E
 Injection Volume : 0.10
 Instrument ID : GC-4

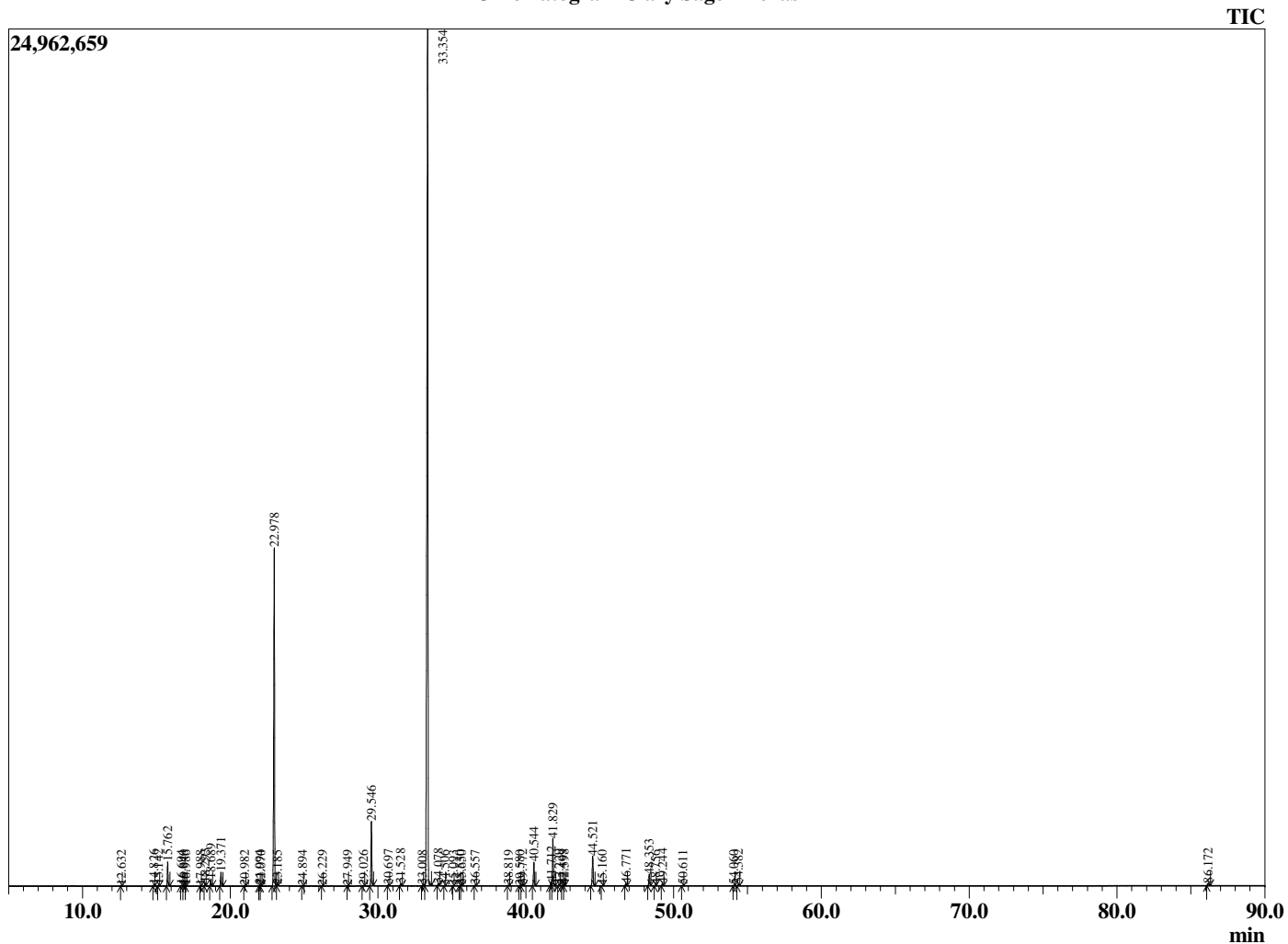


Peak Report TIC

R.Time	Name	Area%
12.632	alpha-Pinene	0.02
14.826	Sabinene	0.06
15.142	beta-Pinene	0.05
15.762	Myrcene	1.20
16.694	Pseudolimonene	0.04
16.840	alpha-Phellandrene	0.01
16.986	Unidentified	0.01
17.988	para-Cymene	0.02
18.293	Limonene	0.14
18.689	cis-beta-Ocimene	0.35
19.371	trans-beta-Ocimene	0.70
20.982	cis-Linalool oxide (furanoid)	0.02
21.994	Terpinolene	0.04
22.070	trans-Linalool oxide (furanoid)	0.02
22.978	Linalool	19.93
23.185	Hotrienol	0.04
24.894	allo-Ocimene	0.01
26.229	Camphor	0.01
27.949	Borneol	0.01
29.026	Unidentified	0.02
29.546	alpha-Terpineol	3.70
30.697	Linalyl formate	0.05
31.528	Nerol	0.12
33.008	Unidentified	0.04
33.354	Linalyl acetate	65.08
34.078	Unidentified	0.11
34.506	Geranial	0.02
35.093	Neryl formate	0.01
35.530	Unidentified	0.01
35.650	Bornyl acetate	0.04
36.557	Geranyl formate	0.03
38.819	Unidentified	0.03
39.580	Unidentified	0.03
39.772	alpha-Terpinyl acetate	0.09
40.544	Neryl acetate	1.40
41.712	alpha-Copaene	0.25
41.829	Geranyl acetate	2.79
42.229	beta-Bourbonene	0.06
42.499	beta-Cubebene	0.05
42.598	beta-Elemene	0.07
44.521	beta-Caryophyllene	1.94
45.160	beta-Copaene	0.02
46.771	alpha-Humulene	0.12
48.353	Germacrene D	0.73
48.756	Unidentified	0.02
49.244	Bicyclogermacrene	0.12
50.611	delta-Cadinene	0.03
54.060	Spathulenol	0.03
54.382	Caryophyllene oxide	0.11
86.172	Sclareol	0.19
		100.00

This report is valid for 1 year from the analyzed date.

Chromatogram Clary Sage - Helias



Comments:

The analysis of this Clary Sage batch sample meets the expected chemical profile for authentic essential oil of *Salvia sclarea*. No contamination or adulteration was detected.