

Sample Information

Analyzed by : Dr. Robert S. Pappas  
 Analyzed : 7/26/2019 7:33:08 PM  
 Sample Type : Essential Oil  
 Sample Name : Lavender - Helias  
 Sample ID : B0504B  
 Injection Volume : 0.10  
 Instrument ID : GC-4

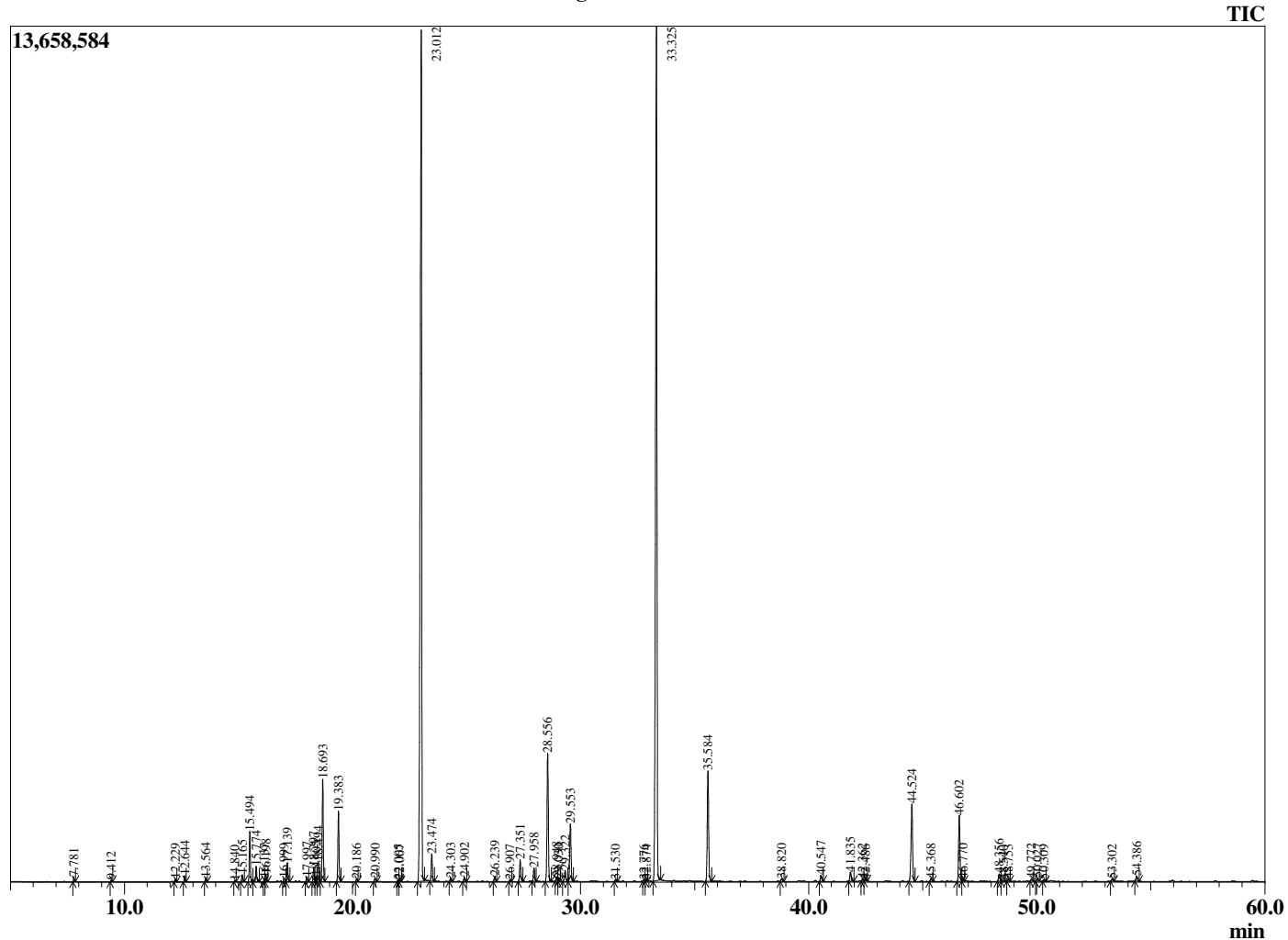


Peak Report TIC

R.Time	Name	Area%
7.781	Hexyl methyl ether	0.10
9.412	n-Hexanol	0.04
12.229	alpha-Thujene	0.09
12.644	alpha-Pinene	0.16
13.564	Camphene	0.11
14.840	Sabinene	0.03
15.165	1-Octen-3-ol	0.21
15.494	3-Octanone	1.44
15.774	Myrcene	0.47
16.137	Butyl butyrate	0.08
16.198	3-Octanol	0.23
16.999	delta-3-Carene	0.10
17.139	Hexyl acetate	0.55
17.997	para-Cymene	0.16
18.297	Limonene	0.44
18.405	beta-Phellandrene	0.18
18.494	1,8-cineole	0.63
18.693	cis-beta-Ocimene	3.04
19.383	trans-beta-Ocimene	2.16
20.186	gamma-Terpinene	0.09
20.990	cis-Linalool oxide (furanoid) + trans-Sabinen	0.12
22.005	Terpinolene	0.05
22.067	trans-Linalool oxide (furanoid)	0.06
23.012	Linalool	34.68
23.474	1-Octen-3-yl acetate	0.89
24.303	3-Octyl acetate	0.11
24.902	allo-Ocimene	0.14
26.239	Camphor	0.19
26.907	Unidentified	0.06
27.351	Lavandulol	0.74
27.958	Borneol	0.47
28.556	Terpinen-4-ol	4.55
28.948	Cryptone	0.17
29.030	Unidentified	0.07
29.322	Hexyl butyrate	0.41
29.553	alpha-Terpineol	2.05
31.530	Nerol	0.06
32.776	Cuminal	0.05
32.874	Carvone	0.05
33.325	Linalyl acetate	33.14
35.584	Lavandulyl acetate	4.06
38.820	Unidentified	0.10
40.547	Neryl acetate	0.21
41.835	Geranyl acetate	0.35
42.362	Hexyl hexanoate	0.08
42.486	cis-alpha-Bergamotene	0.05
44.524	beta-Caryophyllene	3.23
45.368	trans-alpha-Bergamotene	0.11
46.602	trans-beta-Farnesene	2.45
46.770	alpha-Humulene	0.09
48.356	Germacrene D	0.28
48.540	Unidentified	0.04
48.753	Unidentified	0.08
49.772	Unidentified	0.09
50.027	Unidentified	0.12
50.309	gamma-Cadinene	0.06
53.302	Unidentified	0.09
54.386	Caryophyllene oxide	0.18
		100.00

This report is valid for 1 year from the analyzed date.

Chromatogram Lavender - Helias



Comments:

The analysis of this Lavender batch sample meets the expected chemical profile for authentic essential oil of *Lavandula angustifolia*. No contamination or adulteration was detected.