



PID
FLOORS

Introduction to The Forest Stewardship Council



FSC

**FORESTSTM
FOR ALL
FOREVER**

FSC® C132261

Ask about our FSC Certified products

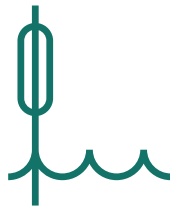
www.fsc.org

Forests are critical to life on Earth



31%

of Earth's land area is still forested - about 2/3 of the forested area that existed prior to industrialization.



Forests protect our soils, provide much of our fresh water, and regulate and stabilize our climate.



Nearly 80%

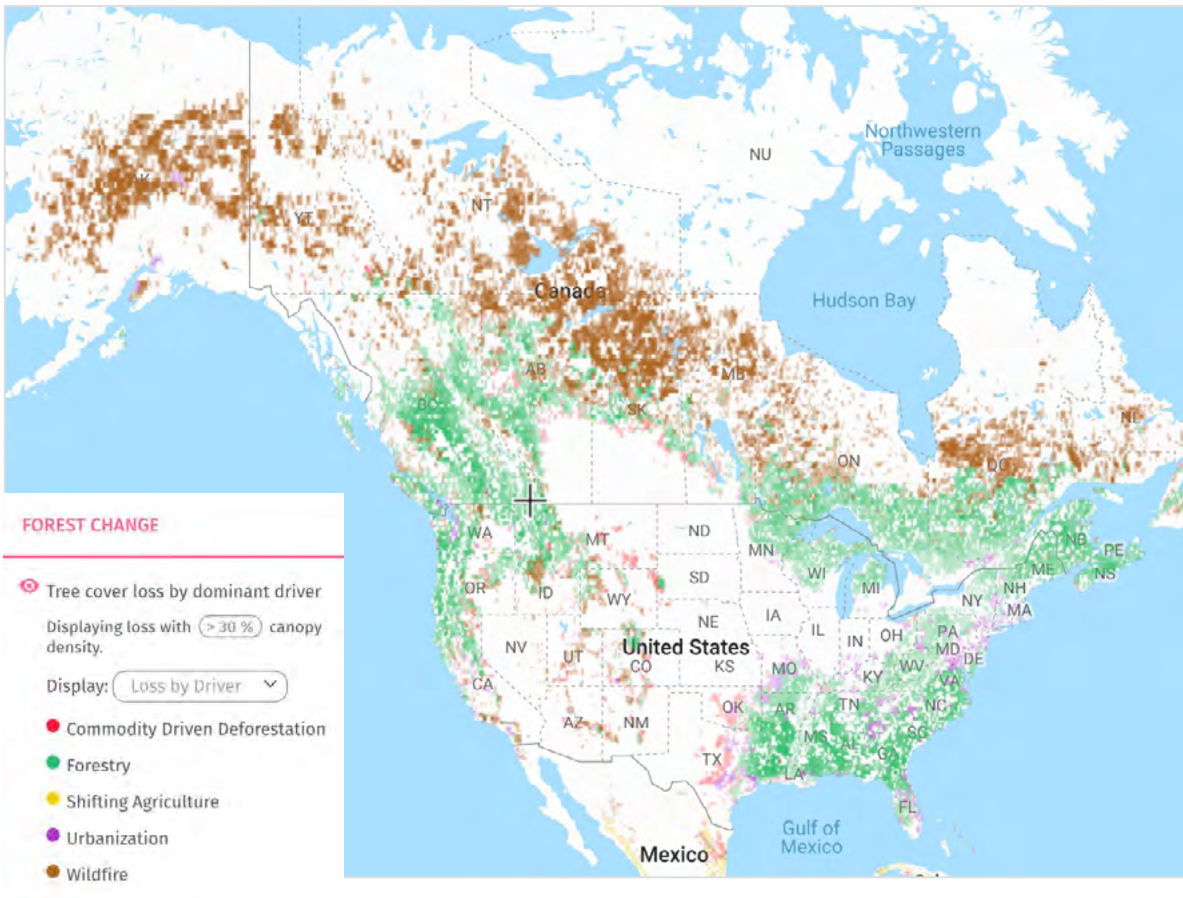
of the world's terrestrial species depend on forests for habitat.



1.6B

1/5 of the world's people depend on forests for their livelihoods.

Forests are changing



- From 2001-2015, North America lost more than 70 million hectares of tree cover. [\(Source\)](#)
- Illegally logging globally has an estimated value of as much as \$100 billion annually – as much as 30% of all trade! [\(Source\)](#)
- Global demand for wood is expected to triple by 2050. [\(Source\)](#)

FSC prohibits conversion of
natural forests to plantations
or non-forest uses



Led by an open membership



The FSC standard requires
forest growth to meet or
exceed harvest



The FSC standard limits
clearcut size to protect
forest ecology



The FSC standard
protects rare old growth

The FSC standard
protects wildlife





The FSC standard restricts
use of hazardous herbicides
and pesticides



The FSC standard protects
Indigenous Peoples' rights



The FSC standard requires
stakeholder engagement on
private and public lands

FSC forests help fight climate change

Research from Ecotrust

FSC-certified forests in
Washington and Oregon
store 30% more carbon.

CLIMATE-SMART FORESTRY

Offsets Other Emissions



Responsible forestry and reforestation in the US can store additional carbon equivalent to taking

92 Million CARS

off the road annually



To meet demand responsibly, forests must be managed sustainably

All forest types are important in meeting different human needs. Managing them responsibly means mitigating climate change risks, providing for ecosystem services, generating industrial wood and fiber, bio-products, providing food and renewable energy, sustaining livelihoods and recreational benefits.

Natural forest



Semi-natural forest



Plantation



To meet demand responsibly, forests must be managed sustainably

Why sustainable sourcing matters

How FSC makes a difference

How FSC helps consumer brands

Marketing FSC to consumers



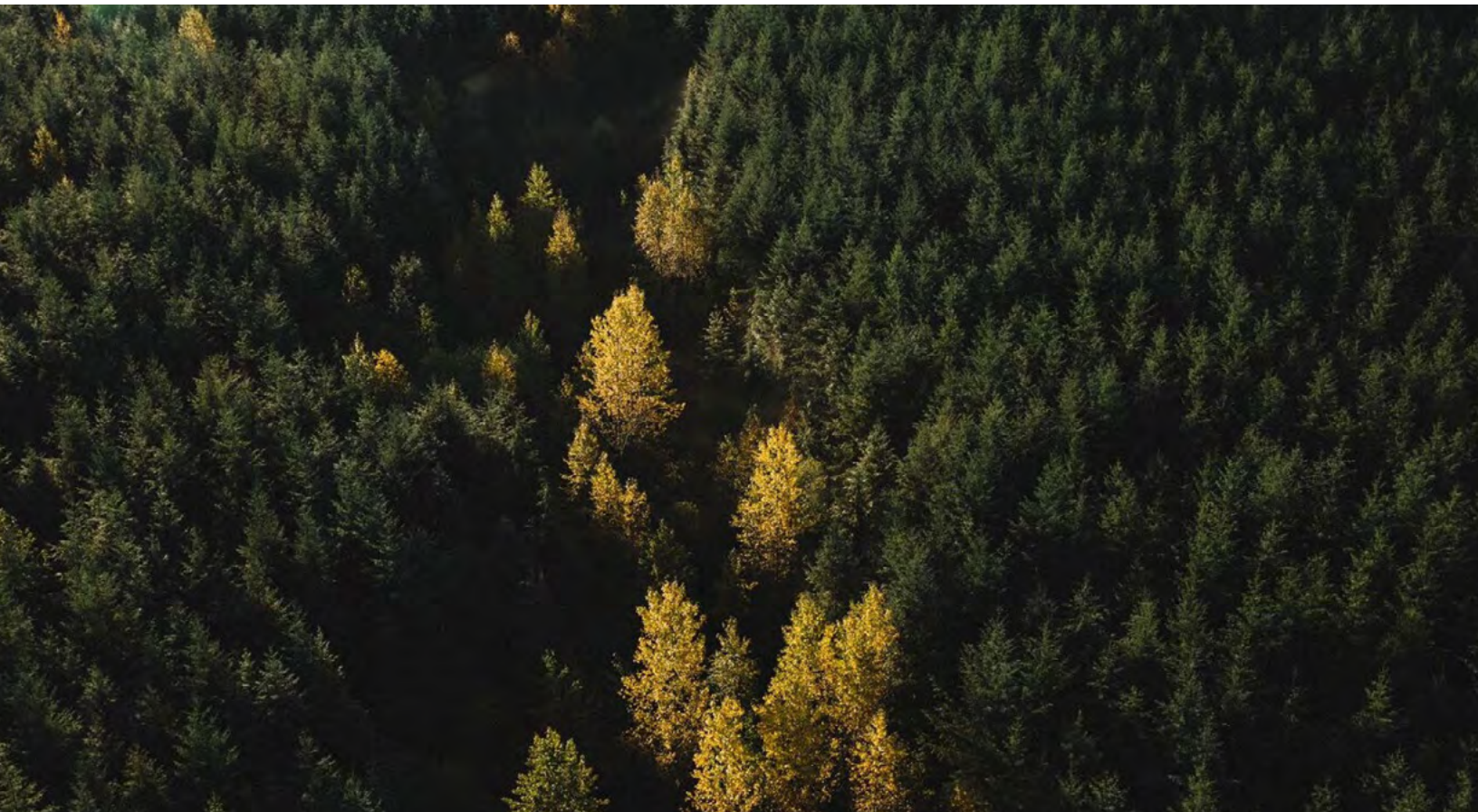
Why does sustainable sourcing matter?

Why sustainable sourcing matters

How FSC makes a difference

How FSC helps consumer brands

Marketing FSC to consumers



FSC also helps mitigate sourcing risk

- Illegal logging and the international trade in illicitly harvested timber is a serious international crime estimated to account for 15-30% of all timber traded¹. It is most prevalent and persistent in tropical forest areas worldwide.
- Illegal logging affects the health, safety, and livelihoods of communities; undermines the legal sector by depressing prices; contributes to national/global insecurity by spreading corruption and funding militias; is responsible for deforestation, habitat loss, species extinction; and contributes to global warming.
- The Lacey Act bans trafficking in illegal wood products. Sourcing FSC is proven approach to mitigating the risk of Lacey Act violations.

Source: Interpol Project LEAF, January 2017 / <https://www.interpol.int/Media/Files/Crime-areas/Environmental-crime/Leaflets-brochures/Project-Leaf/>

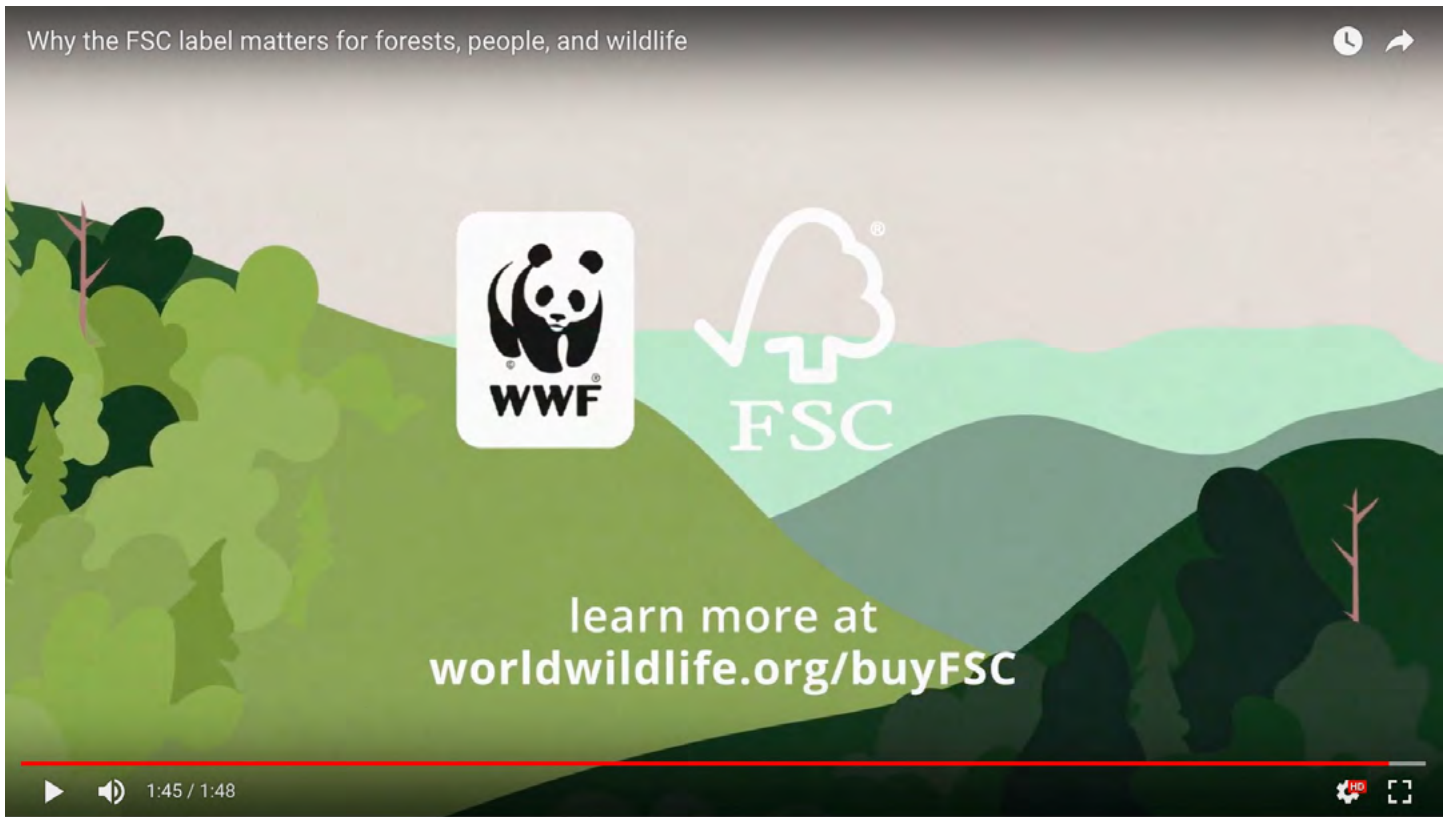
REFERENCES

WWF's Living Forest Report:
http://wwf.panda.org/about_our_earth/deforestation/forest_publications_news_and_reports/living_forests_report/

New York Declaration on Forests:
<http://forestdeclaration.org/summary/>

Tropical forests are now a net carbon source:
<http://science.sciencemag.org/content/early/2017/09/27/science.aam5962>

Food and Agriculture Organization of the United Nations' State of the World's Forests 2018:
<http://www.fao.org/state-of-forests/en/>



FSC is the world's most trusted forest certification: it alone includes essential safeguards

As leading conservation organizations will testify, FSC is the only forest certification worthy of their endorsement, ensuring that critical forest ecosystem values — and the workers and communities that depend upon them — are protected.

FSC's success has given rise to other certification schemes, most of which tend to codify legal forestry or any voluntary best management practices that may exist.

In the following slides, we note the key differentiating aspects of FSC.

FSC facts

Established in 1994, the Forest Stewardship Council (FSC) was the world's first forest certification system, a market-based conservation tool to promote responsible forest management and trade. (Source: WWF)

FSC certification is the **most rigorous forest management standard available**, ensuring that critical forest ecosystem values — and the workers and communities that depend upon them — are protected. (Source: NRDC)

FSC's success has given rise to other certifications but remains the only **certification with broad support from environmental and social NGOs**. (Source: WWF)

Today, **more than 200 million hectares of forests in 90 countries** are managed to FSC standards. These include boreal, temperate and tropical forests owned publicly, privately and by communities. (Source: FSC International)



The FSC standard ensures
claims are always tied to
certified inputs

About FSC Controlled Wood

FSC controlled wood is material from acceptable sources that can be mixed with FSC-certified material in products that carry the FSC Mix label.

There are five categories of unacceptable material that cannot be mixed with FSC certified materials:

1. Illegally harvested wood
2. Wood harvested in violation of traditional and human rights
3. Wood harvested in forests in which high conservation values (HCVs) are threatened by management activities (HCVs are areas particularly worthy of protection)
4. Wood harvested in forests being converted to plantations or non-forest use
5. Wood from forests in which genetically modified trees are planted.

Using FSC Controlled Wood

For companies with, or seeking, chain of custody certification that need to source controlled wood from non-FSC-certified suppliers, risk assessments must be used.

Risk assessments are developed in coordination with national stakeholders and must be approved by the FSC Policy Standards Unit before they become mandatory. Once approved, organizations are able to determine the risk involved in sourcing controlled wood in relevant areas.

More information:

<https://fsc.org/en/page/forest-management-certification>

FSC Claims

FSC claims are required to maintain an intact COC path and for future FSC claims to be made.

Types of FSC Claims:

FSC 100%

FSC Mix [NN]%

FSC Mix Credit

FSC Recycled Credit

FSC Recycled [NN%]

ABC Paper Supply
HF-COC-001388
 HOUSE STREET CHICAGO, IL
 USA

CONSIGNEE:
 SUSTAINABLE PAPER,
 LTD. ELM STREET
 MINNEAPOLIS, MN
 USA


INVOICE

INVOICE #INV014 DATE:
 MAY 1, 2014

Company's
FSC
Certificate
Code

FSC
Claims

NO	DESCRIPTION	QTY	UNIT PRICE (US)	TOTAL AMOUNT
876-5T-99-100-9U	W7.1 NOTEBOOKS, GRAPHIC - FSC MIX CREDIT	250	2.60	T (4900)
	P 7.3 FILE FOLDERS – FSC MIX 70%	190	0.25	475
	P5.3 GIFT BAGS – FSC RECYCLED CREDIT	200	0.4	860
		0	3	



 Authorized Signature

THANK YOU FOR YOUR BUSINESS!

Unique... and uniquely supported

FSC has the unique ability to confer legitimacy and credibility to brands who source FSC-certified forest products.

Why FSC is unique for corporate partners and consumers

WWF Forest Certification Assessment Tool (CAT)
– assesses FSC vs. other certifications

Consumer research shows FSC is uniquely capable of driving brand value and customer affinity

80%

FSC certification helps to create a positive corporate image

77%

FSC is the market leader when it comes to forest certification

Source: Globescan 2017

Helping make a difference

- The Global Forest Resources Assessment (FRA), coordinated by FAO, found that the world's forest area decreased from 31.6 percent of the global land area to 30.6 percent between 1990 and 2015, but that the pace of loss has slowed in those years.
- There is quantitative evidence to show that forests are being managed more sustainably and that forests and trees contribute to achieving SDGs related to the livelihoods and food security of many rural poor, access to affordable energy, sustainable economic growth and employment (in the formal sector), sustainable consumption and production, and climate change mitigation, as well as sustainable forest management.

FSC connects you with proven positive change

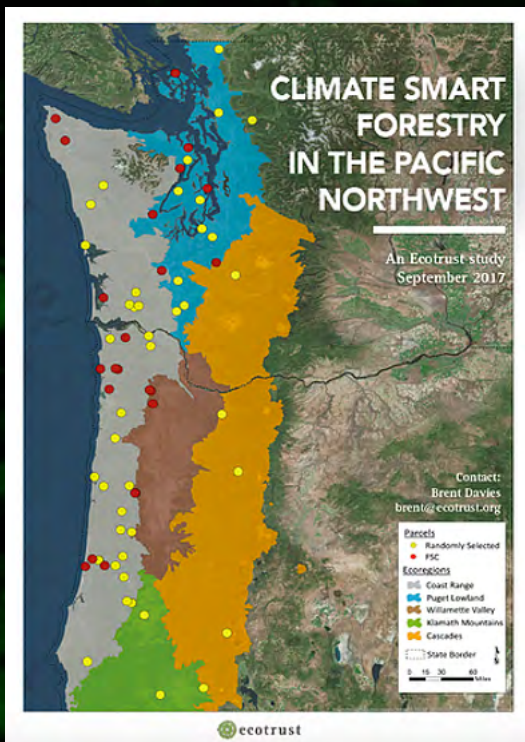
- FSC mitigates forest degradation vs. conventional logging.
- FSC protects biodiversity and wildlife habitat better than conventional logging.
- FSC is more effective in halting environmental degradation than protected areas, where law enforcement is weak and local support is lacking.
- FSC increases inclusiveness and give more power to workers and communities.
- FSC results in better working and living conditions than conventional logging concessions.
- FSC results in improved relationships between companies and communities.
- FSC leads to improved national monitoring and legal compliance, with positive effects on regional and national regulations beyond certified operations.

Sources: Clark et al, 2009; Meijaard and Shell, 2008, Van Kuijk et al, 2009; Mannan, 2008; Hughell and Butterfield, 2008). Cerutti et al 2014; Pena-Claros et al 2009; Cashore et al 2006; De Lima 2008; Tysiachniouk 2012. Rayden & Rawlings, 2010; Price 2010

FSC forests are proven to help fight climate change

By using FSC-certified building products, projects help keep more carbon in the forest while also sequestering carbon on-site.

Recent research from Ecotrust shows that FSC-certified forests in Washington and Oregon store an average of 30% more carbon versus proximate forests managed to legal requirements alone.



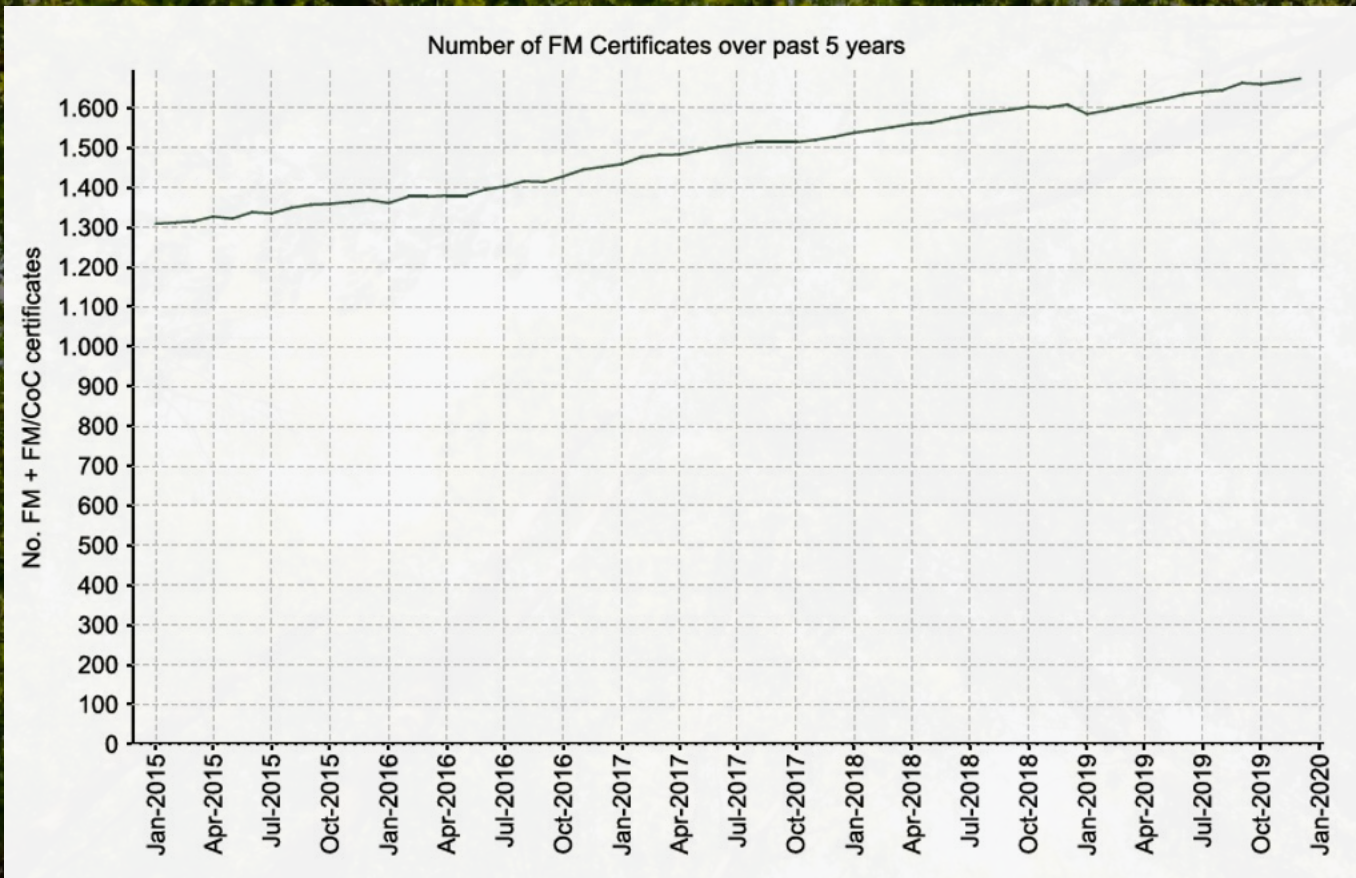
Chain of Custody certification (CoC)

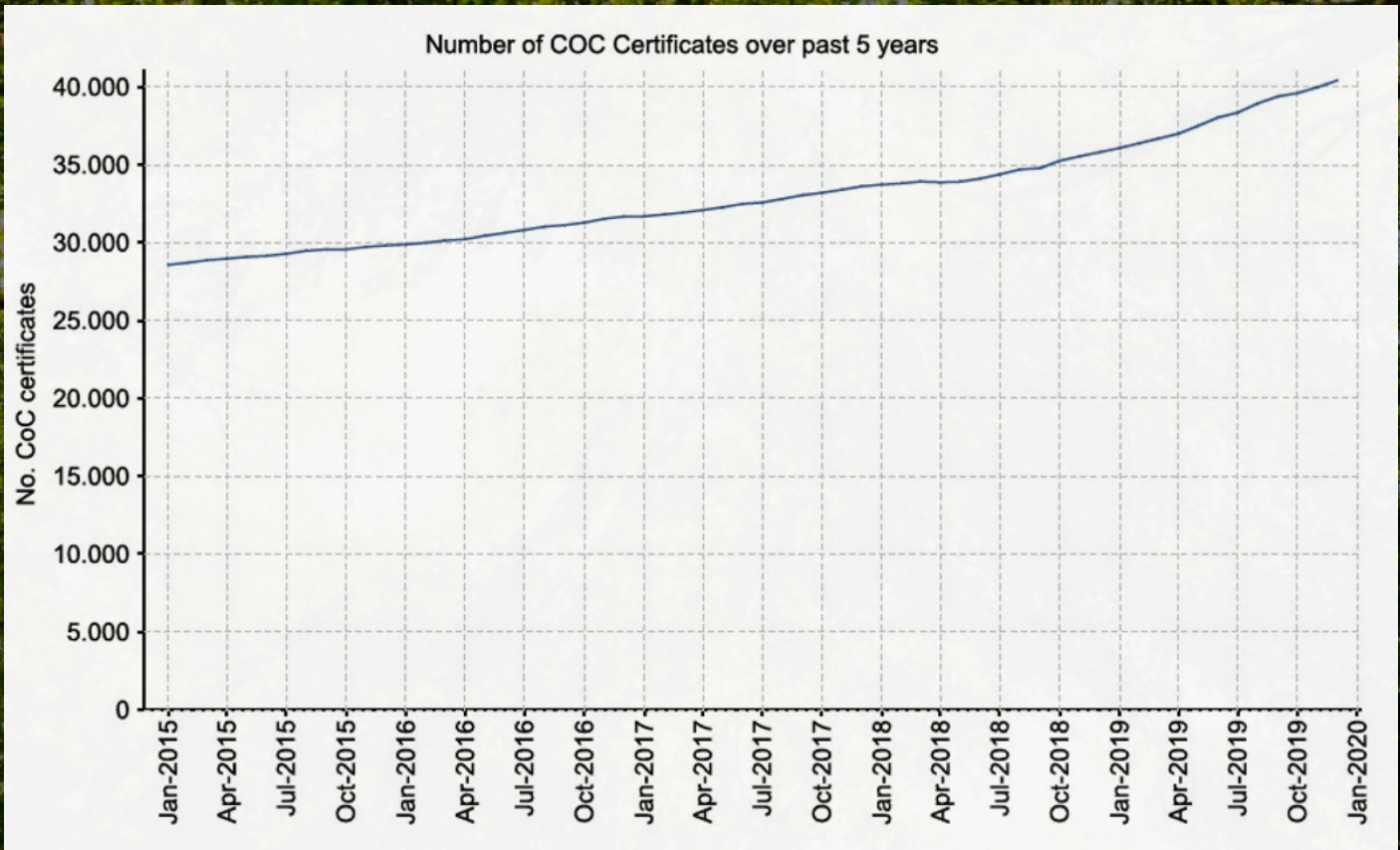
Chain of Custody (COC) certification



FSC requires CoC certification for all companies in the supply chain that take legal ownership of FSC-certified products and wish to make FSC invoice claims or use FSC trademarks in sales and promotions.

If a single link in the supply chain between the forest and the end of the chain is not CoC certified, then the chain is broken and further FSC claims are not permitted.





SCS Global Services does hereby certify that an independent audit has been completed and conformity to the applicable standard(s) has been confirmed for:

PID Floors
 5 West 20th Street, New York, NY 10011, United States

This single certificate covers the distribution of wood flooring using the transfer system.
 The facility(s) are hereby Chain of Custody certified to sell products as:
FSC Mix; FSC 100%; FSC Recycled

The assessment has been conducted by SCS Global Services in accordance with the protocols of the Forest Stewardship Council® A.C. (FSC®).
 FSC Standard: FSC-STD-40-004
 Certificate Code: SCS-COC-005748 Trademark License Code: FSC-C132261

Valid from: 24 September 2021 Expiry date: 23 September 2026

This certificate itself does not constitute evidence that a particular product supplied by the certificate holder is FSC-certified (or FSC Controlled Wood where applicable). Products offered, shipped or sold by the certificate holder can only be considered covered by the scope of this certificate when the required FSC claim is clearly stated on sales and delivery documents. The scope of this certificate is considered accurate on the date of issuance. The current validity and scope including the full list of products, shall be verified on <http://info.fsc.org>. The certificate shall remain the property of SCS, and this certificate and all copies or reproductions of this certificate shall be returned to SCS immediately upon request. Where a certificate covers more than one site, the covered products and processing activities are performed by the network of Participating Sites, and not necessarily by each of them.



The mark of responsible forestry




Maggie Schwartz, Director, Chain of Custody
 SCS Global Services
 2000 Powell Street, Ste. 600, Emeryville, CA 94608 USA

Revised 27 July 2011

CONTACT

SALES@PIDFLOORS.COM

212.255.5028

37 W 20TH STREET, NEW YORK, NY 10011