

doopser

## OPERATING INSTRUCTION

doopser



**Doopser Electronic Co., Ltd.**

**Address:** 30 Smit Street , Georges Park , Western Cape , 7130

**Telephone:** 082 931 2887 **E-mail:** info@doopser.co.za **Website:** www.doopser.co.za

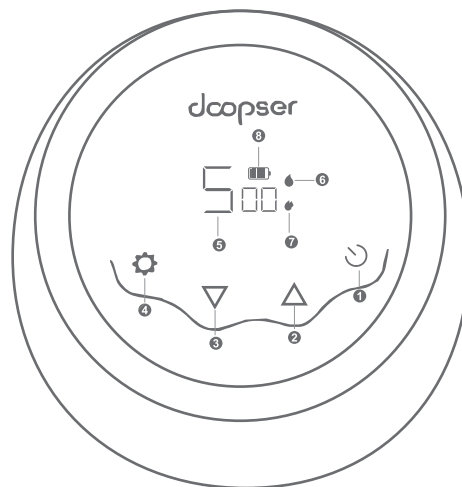
Single/Double Electric Breast Pump DPS-006/DPS-006D

ELECTRIC BREAST PUMP

## Button and function

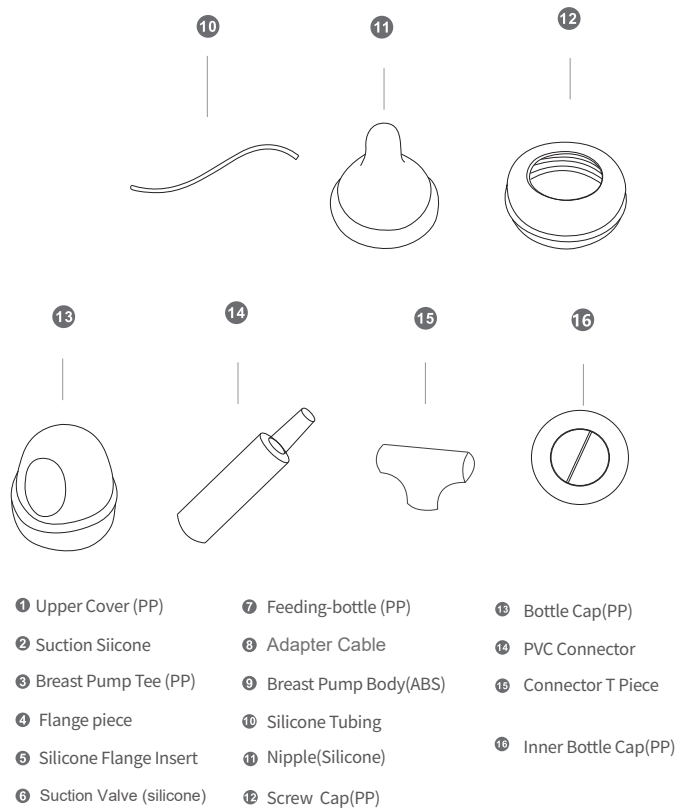
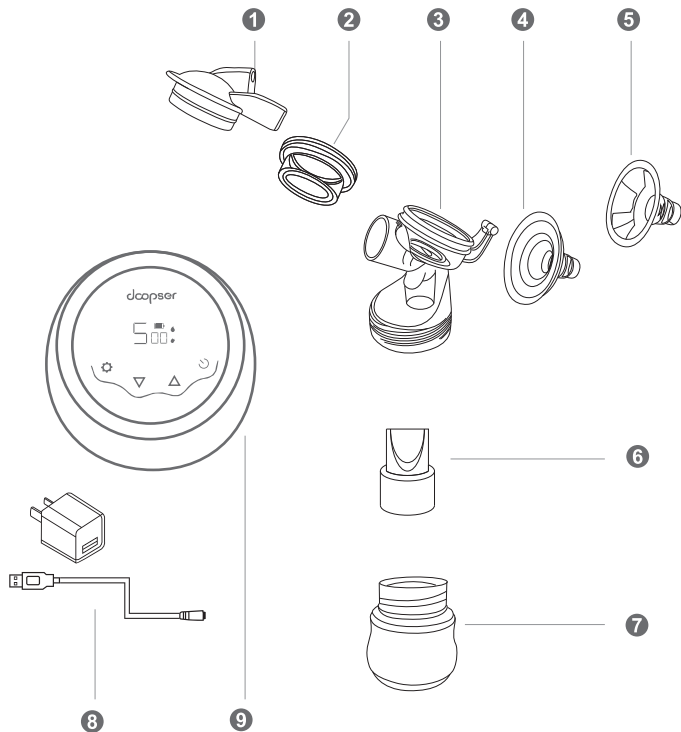
### Catalog

Button and Function .....	01
Components and Names .....	02-03
Installation .....	04-06
Operating Mode .....	07
How to Use the Breast Pump .....	08
Attentions .....	09
Troubleshooting .....	10
Storage and Heating for Breast Pump .....	11
Disinfection Methods .....	12



- |                       |                        |
|-----------------------|------------------------|
| ① ON-OFF key          | ⑤ Working Time display |
| ② Suction Enhance Key | ⑥ Stimulation Mode     |
| ③ Suction Weaken Key  | ⑦ Expression Mode      |
| ④ Mode Key            | ⑧ Battery level        |

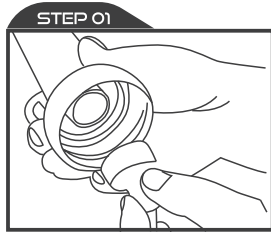
## Components and their Name



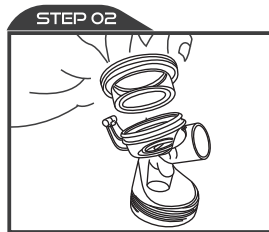
- 1** Upper Cover (PP)
- 2** Suction Silicone
- 3** Breast Pump Tee (PP)
- 4** Flange piece
- 5** Silicone Flange Insert
- 6** Suction Valve (silicone)
- 7** Feeding-bottle (PP)
- 8** Adapter Cable
- 9** Breast Pump Body (ABS)
- 10** Silicone Tubing
- 11** Nipple (Silicone)
- 12** Screw Cap (PP)
- 13** Bottle Cap (PP)
- 14** PVC Connector
- 15** Connector T Piece
- 16** Inner Bottle Cap (PP)

## Installation

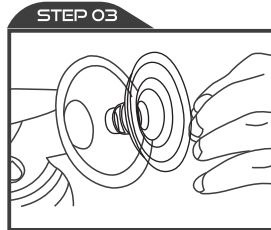
**!** Before assembling breast pump, please wash your hands first.  
And make sure to disinfect all parts before use.



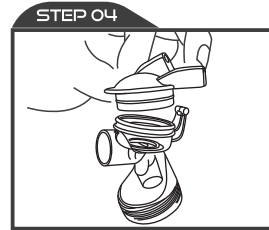
Fix the suction valve on the breast pump tee, and the top of the suction valve can rotate in any direction (ensure the suction valve is fully pushed-in)



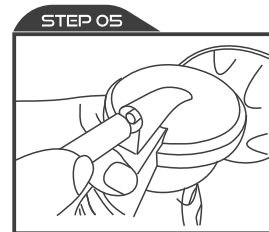
Install the suction silicone into the breast pump tee ensuring a tight fit.



Install the Flange piece on the breast pump tee and make sure to match with the silicone flange insert.



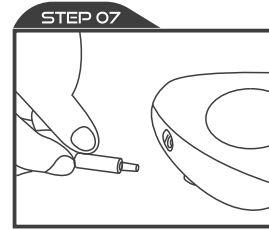
Place upper cover onto suction silicone and press in firmly.



Insert the PVC connector into the back hole on upper cover and push in for snug fit

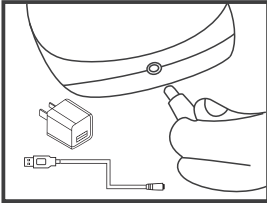


Install the feeding-bottle on the body frame of the breast pump tee and screw up tightly.



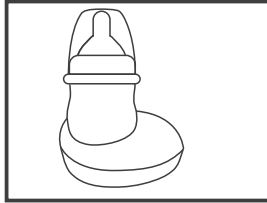
Insert the PVC pipe joint into the front hole on breast pump body, and make sure the joint is fully inserted.

## STEP 08



Insert the AC output plug of the adapter into the power supply jack (of the breast pump body) and the usb into any 5V/1A output adapter for charging. Once light on screen is no longer flashing the unit is charged.

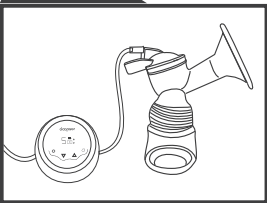
## STEP 09



You can use the breast pump anytime after the assembly is completed. Remove the feeding-bottle and lid. Place the bottle with breast milk into the bottle base. If you don't need to feed the baby immediately, store the breast milk in the fridge.

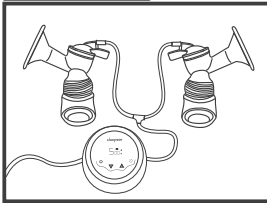
Wash all the parts of the breast pump at once in to prevent the breast milk from drying on the components which makes cleaning difficult.

## STEP 10



Assembly of unit for single pump use.

## STEP 11



Assembly of pump for dual pump use.

## Operating Mode

### Operating Mode of Power supply (Alternating Current)

This breast pump can be operated when plugged into power. Link the 5V DC plug of the adapter to the body (AC220V and 50HZ of input, DC5V and 1A of output) and the other side of connector to the power jack. When the breast pump is power on, there's power mark on the boot-up screen. Please pull the plug when the breast pump is not in use.

### Operating Mode of Battery (Direct Current)

This breast pump can be operated with built-in lithium battery. When the battery is fully charged, the battery mark is displayed on the boot-up screen. When the battery mark starts to flash, please plug in the adapter to charge the battery. When operating in the battery mode, please pull the plug of the AC adapter from the breast pump body. Warning: Improper use of the battery in this device may cause fire or chemical reaction, Avoid disassembly and heating over 60 degree Celsius.

## How to use the Breast Pump?

### Instructions for use:

Please make sure all parts of breast pump have been fully disinfected and the breast pump is assembled according to the instructions correctly. Wash your hands, and massage breast before use. After massage sit up and slightly forward (do not lie down or tilt the breast pump) place silicone flange over center of the breast and align with the nipple. Press it tightly on the breast to ensure an air tight seal and normal suction.

### ON-OFF key

When powered on, the default setting is first level 45s to stimulate lactation, the second level default is 45s stimulate lactation, the third level default is 45s to stimulate lactation, the fourth level default is 45s to stimulate lactation and automatically turn to the fifth level for the expression mode

### Weaken-Enhance key

This button is for suction level adjustment. Level one to four is to stimulate lactation and level five to nine is normal suction. During the period of both stimulate lactation and normal suction, you can adjust the suction enhance key and weaken key according to your own comfort. The greater the level, the higher the suction, (Research shows that in the most comfortable situation, the suction would be most effective)

### Mode Key

First press shows stimulation mode, and second press shows expression mode

### Reminder:

During use, you are able to repeat stimulate and suction mode to get a second milk ejection reflex. Adjust through level one to four to stimulate lactation. If you want a normal suction, adjust through levels five to nine. Once finished please turn off the power and disassemble the accessories.

Note: This breast pump will automatically turn off by default after working 30 minutes. The breast pump body should work in normal temperature.

## Attentions

- ❶ Please carefully read the instructions before use
- ❷ Don't wash the breast pump body in water or other liquids.
- ❸ Don't put the breast pump into a steam sterilizer for disinfection.
- ❹ Disinfection of the silicone tube and the upper cover is not recommended, If dirty, clean and dry the interior and exterior of tubes and dry with a blower. Ensure no water remains in the interior wall of the tube. If moisture is present on the interior of the tubing, the moisture would be sucked into the breast pump body which will cause damage to the components and void warranty claim.
- ❺ After disinfecting the suction silicone, please dry the water on the suction silicone before use.
- ❻ Please use the attached adapter instead of an other ones to avoid damage to the breast pump body
- ❼ Pay attention to the battery polarity while using a rechargeable battery. Do not cause a short circuit, so as to avoid explosion or fire. Please use the AC adapter of 110-230V input and DCV, 1A output.
- ❽ If the AC adapter is damaged, please choose the same model adapter with same output volt and current in our company or to maintenance and replace the adapter by professionals.
- ❾ Dry your hands before operating this device, so as to avoid any water get into the body and cause damage.

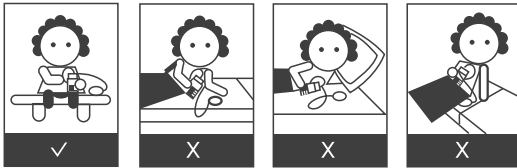
If there's water in the body because of improper operation, the warranty exchange will be void.

## Troubleshooting

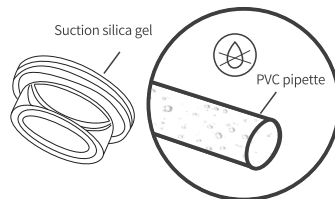
### ⚠️ The suction is too small or no suction

- 1 Check whether the suction silicone and upper cover are sealed.
- 2 Check whether the flange silicone is installed correctly.
- 3 Check whether the valve silicone is installed correctly.
- 4 Check whether the joint parts between the PVC connectors, tubes and the body have been installed correctly.
- 5 Check whether the silicone tube has been distorted, twisted or kinked anywhere.
- 6 Check whether the PVC T connector between the two sides of silicone tube and the body is not loose. Cut the loose silicone tube and attach pvc connectors again if needed.

**While pumping, mothers should sit upright. Do not lean forward or lay on the side, or the breast milk could flow back.**



If there's water left in the interior wall of the silicone tube after cleaning, please dry the water before use or it will cause damage to the body, and the body can't be used any more.



## Storage and heating for breast milk

### 1 Storage

After pumping, close bottle tightly or seal the storage bag and put it into fridge immediately or store in freezer for longer storage.

#### Freshly collected breast milk

⚠️ Do not store in room temperature

2~8°C



Store in the fridge for about 3-4 days

OR

-18°C



Store in the freezer for about 3-5 days

### 2 Heating

After defrosting, use a warmer instead of microwave oven or boiling water to heat the breast milk, so as not to lose nutrients. Then you can use the breast milk after heating for feeding.



- 1 If you want to freeze the breast milk, fill breast milk into the storage bag or bottle till 3/4 point to allow space for freezing expansion.
- 2 In order to keep the nutrients, place the frozen breast milk into cold closet for defrosting and use hot water (max 37 degree) to warm up the bottle or bag once defrosted.
- 3 Gently shake the stored bottle or bag to make the separated fat mix evenly in the breast milk.
- 4 Do not put the frozen breast milk into microwave oven or boiling water for heating, so as not to loss nutrients or burn the babies mouth.
- 5 Do not freeze the defrosted breast milk again. Please don't mix the fresh milk up with the defrosted milk. Once defrosted, milk must be used or discarded.

## Disinfection methods

**⚠ Note: The breast pump body and the power adapter can't be disinfected or cleaned with water.**

Please refer to following methods for how to disinfect the accessories.

- ① microwave oven disinfection: please use disinfecting container or bag when using a microwave oven for disinfection. And there must be water in the container when heating the milk.
- ② Boil disinfection: Place the components in boiling water to disinfect for about 10 minutes. Please note that the water level cannot be lower than the components and the components can't contact hot pan base directly in order not to burn the components.

## Certificate

doopser

### After sale warranty service card

Thank for your choosing our products. For your interest, please keep your warranty card in a safe place. If you have any problems, please contact the dealer

User name:	Product name:
User Tel:	Product model:
Purchased goods:	Product date:
Purchase address:	

#### Maintenance record:


- ① On the premise that users operate according to these instructions, a 6 month exchange warranty is offered for any manufacturer defects
- ② We shall not provide a warranty service for the following reasons that cause failures, such as:
  - A、 Failures caused by disassembly or modification of the product without permission.
  - B、 Failures caused by abuse or dropping during use or transporting.
  - C、 Failures caused by lacking of proper maintenance and cleaning.
  - D、 Failures caused by not operating in accordance with this manual .
  - E、 Failures caused by any unregistered third party repairs.
- ③ Any warranty claims must be made with original invoice and order number.