

V2L Adapter

USER MANUAL



Contents

| | |
|-----------------------------|---|
| About the V2L Adapter | 2 |
| Warnings | 2 |
| What's Included | 3 |
| Introduction to Parts | 4 |
| How to Use | 5 |
| Troubleshooting | 7 |
| Specifications | 8 |

About the V2L Adapter

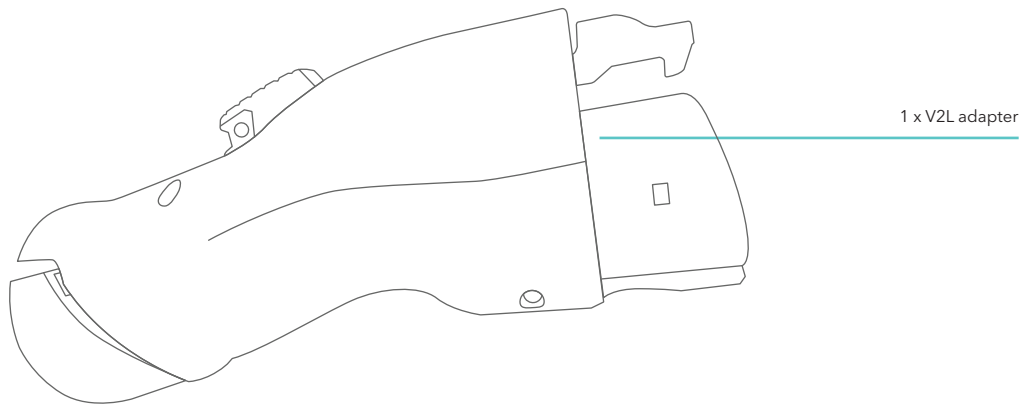
The Lectron V2L (Vehicle-To-Load) Adapter converts your EV charger port into a standard AC outlet (US), so you can use your EV to power your electronic devices, lights, appliances and more.

Warnings

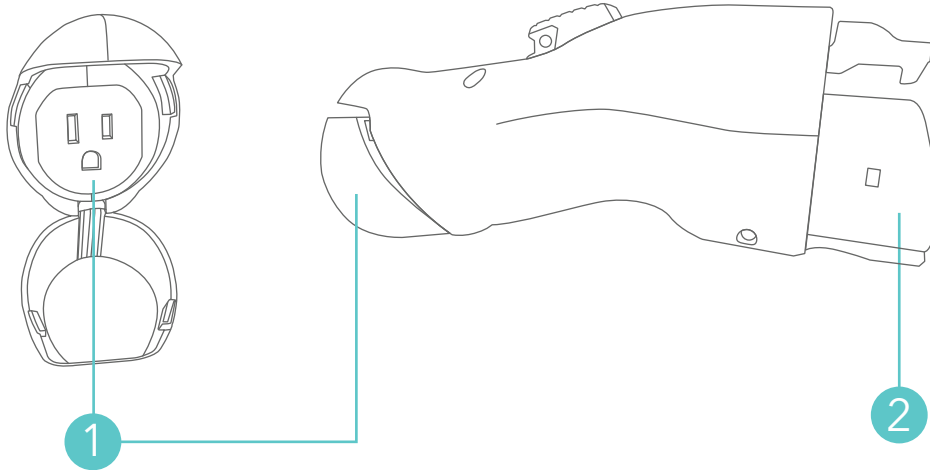


- Do not use in wet conditions, such as rain or snow.

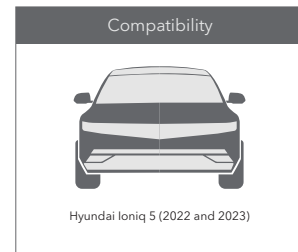
What's Included



Introduction to Parts

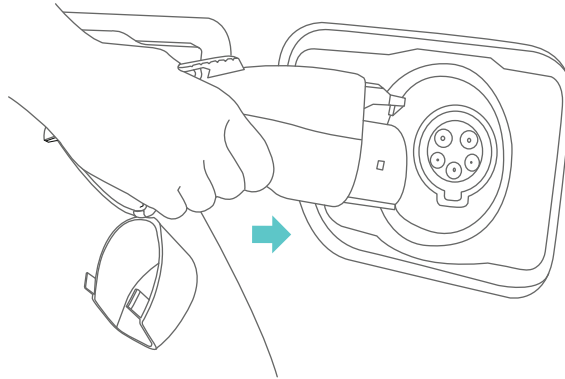


- 1. Standard AC outlet (US)
- 2. J1772 plug



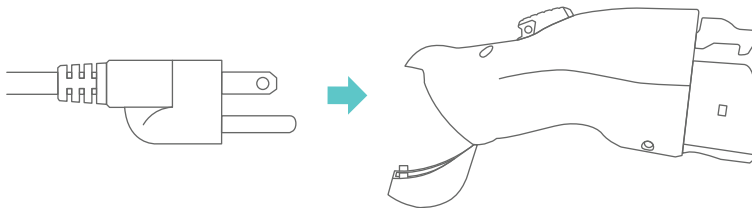
How to Use

1. Firmly plug the adapter into the J1772 charger port.

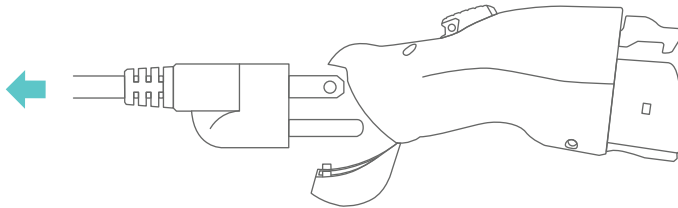


Note: The adapter must be plugged in within 1 minute of opening the charger door. Once it's plugged in, the adapter will automatically lock to prevent theft.

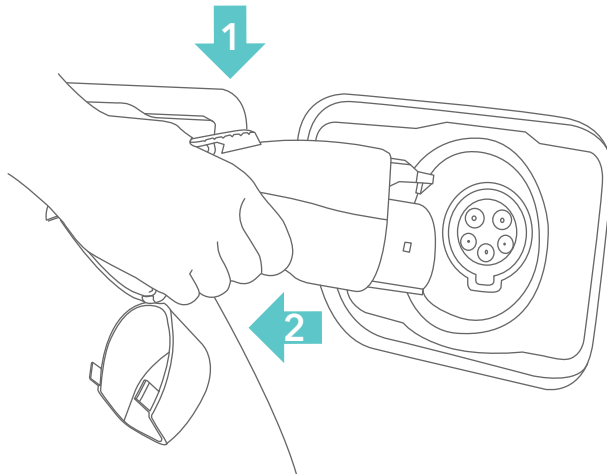
2. Open the hatch at the back of the adapter and plug the electric cord into the AC outlet.



3. When finished, unplug the electric cord from the adapter.



4. Press the 'unlock' button on the vehicle door to unlock the adapter. Then, press the button on the top of the adapter and pull it out.



Troubleshooting

1. Why won't the adapter power my device?

Make sure both the adapter and the electric cord are firmly plugged in.

2. Why did my adapter suddenly stop during use?

It could be an overload or a low EV battery. Check your EV.

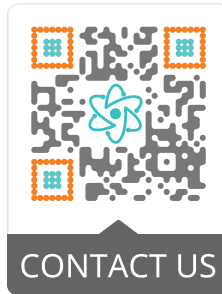
Specifications

| | |
|---------------------|--------------------|
| Compatibility: | J1772 |
| Outlet: | NEMA 5-15 (AC) |
| Current: | 15A Max |
| Contact resistance: | 0.5 m Ω Max |
| Weight: | 10.6 oz |
| Dimensions: | 8.1 x 2.9 x 2.1 in |



Get More Support

Scan the QR code below or email us at contact@ev-lectron.com



LECTRON

www.ev-lectron.com

Made in China