



VORTEX PLUG
SUPERCHARGER
TO CCS1 ADAPTER
USER MANUAL



CONTENTS

Introduction	2
Safety Instructions	2
What's Included	3
Parts Overview	4
Before Use	5
Charging Time	5
Connecting the Vortex Plug	6
Removing the Vortex Plug	8
Troubleshooting	9
Specifications	10

INTRODUCTION TO THE VORTEX PLUG

The Lectron Vortex Plug is a NACS to CCS1 adapter that enables CCS1 vehicles within the North American Charging Standard (NACS) Alliance to access Tesla Supercharger stations. Access to Supercharger stations is contingent upon Tesla's rollout of access and your automaker's authorization. For Supercharger ports compatible with CCS1 vehicles, please reach out to Tesla. For further details on your vehicle and access availability, kindly contact your automaker.

WARNING



High Voltage - Handle with care and ensure proper connection before use.
Risk of electric shock and serious injury.

IMPORTANT SAFETY INSTRUCTIONS

When using electric products, basic precautions should always be followed, including the following. This manual contains important instructions that must be followed during use and maintenance of the adapter.

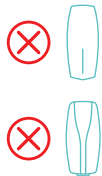
For use with compatible Tesla Superchargers ONLY. Not suitable for use with Wall Connectors, Destination Chargers, Mobile Connectors, or any other EV chargers.

For use with Tesla Superchargers ONLY.



NOT suitable for use with:

- Wall Connectors
- Destination Chargers
- Mobile Connectors
- Any other EV chargers

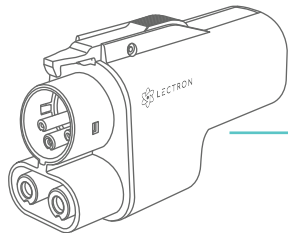


Misuse may result in damage and safety hazards.

PLEASE READ INSTRUCTIONS CAREFULLY BEFORE USE:

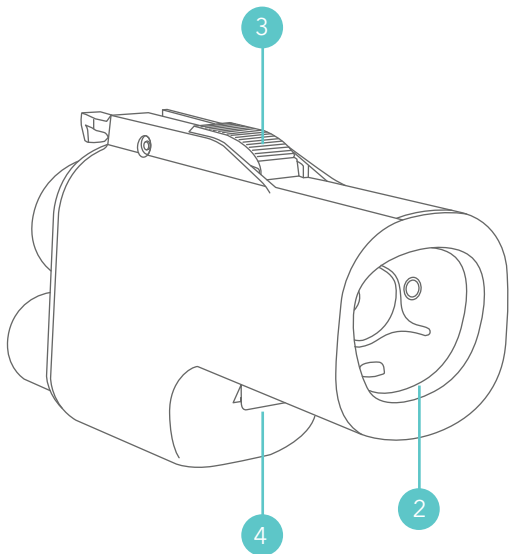
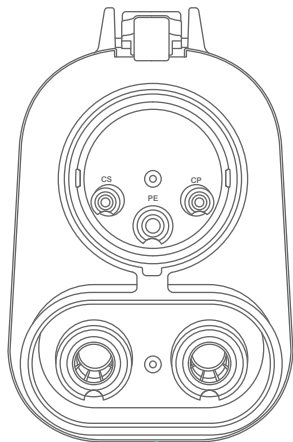
- Intended for CCS1 vehicles within the NACS alliance only.
- Do not use this adapter if any of the following components exhibit signs of damage: the flexible output cable, vehicle connector, vehicle inlet, or the adapter itself. This includes broken insulation, cracked or broken housings, or any accessibility to internal parts, including wiring.
- Do not use this adapter with chargers capable of dynamic current control mode or boost current mode, as this could potentially exceed the adapter's rating. Exceeding the adapter's rating poses a risk of shock and fire.
- Follow the correct connection and disconnection procedures as prescribed in the user manual.
- Always securely attach the charger coupler to the adapter first, before inserting it into the vehicle charging port.
- When disconnecting, the order should be reversed.
- Do not disconnect during charging.
- Do not place fingers into the adapter inlets.
- Protect from water and moisture.
- Operate within the temperature range of -22°F to 122°F.
- Handle with care and store in a safe location.
- Do not clean with detergent.
- Do not open or modify the adapter.
- Contact Lectron Customer Support at contact@ev-lectron.com for usage guidelines, maintenance, or repairs.

WHAT'S INCLUDED



1 x NACS to CCS1 Adapter

PARTS OVERVIEW



- 1. CCS1 Coupler
- 2. NACS Supercharger Inlet
- 3. CCS1 Unlock Latch
- 4. NACS Unlock Button

BEFORE USE

NOTE: Ensure the Tesla Supercharger supports CCS1 charging.

WARNING: Do not store the NACS to CCS1 Adapter outside of the storage temperature range of -40°F to 185°F.

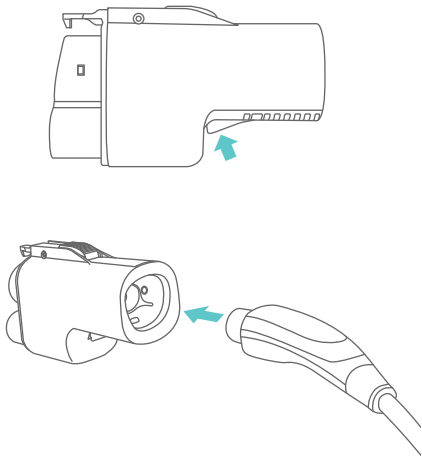
CHARGING TIME

Charging time varies depending on the Supercharger station, electric vehicle specifications, environmental conditions, and battery temperature.

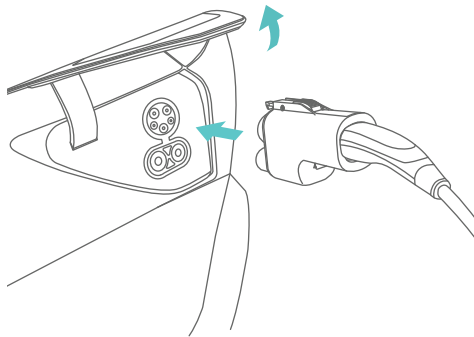
The Vortex Plug includes built-in temperature monitoring. Charging power may decrease if the terminal exceeds 95°F. Operation shuts off if the charging coupler reaches 140°F. If you encounter operation shut off, please email contact@ev-lectron.com for assistance.

CONNECTING THE VORTEX PLUG

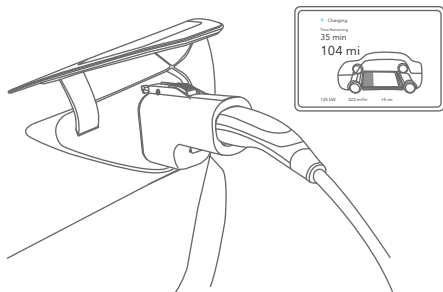
1. Press the NACS unlock button and connect the Supercharger coupler to the NACS Supercharger inlet on the adapter.



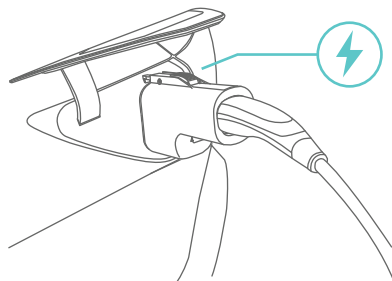
2. Once securely connected, open your EV charging port and press the CCS1 unlock latch on the adapter, before plugging the adapter and coupler into your vehicle. Release the CCS1 unlock latch to ensure a secure connection.



3. Allow a brief pause for the vehicle and charger to begin communicating. Check the internal EV display for a successful connection.

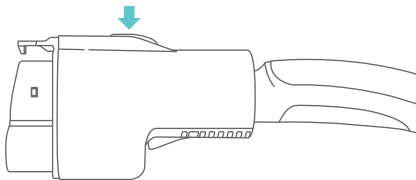


4. Begin charging following the station guidelines.

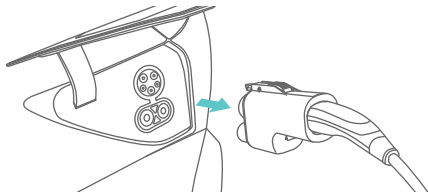


REMOVING THE VORTEX PLUG

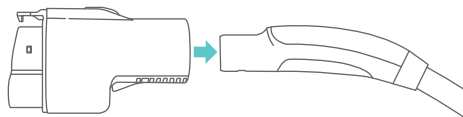
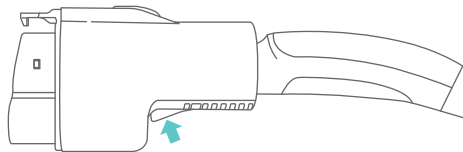
1. Only remove the Vortex Plug once charging is complete.
2. Press the CCS1 unlock latch on the adapter to release the connection between the adapter and the vehicle charging port.



3. Disconnect the adapter coupler from the vehicle charging port.



4. Close the EV charging port.
5. Press the NACS unlock button and disconnect the Supercharger coupler from the NACS Supercharger inlet on the adapter.



TROUBLESHOOTING

If the vehicle fails to initiate charging, please consider the following steps:

1. Ensure the Supercharger supports CCS1 vehicles.
2. Check for firm connections at both the NACS and CCS1 ends of the Vortex Plug.
3. Safely unplug following the user manual procedure, then begin the connection process again.
4. Verify the charging status on the Supercharger and the electric vehicle display.
5. If issues persist, please email contact@ev-lectron.com

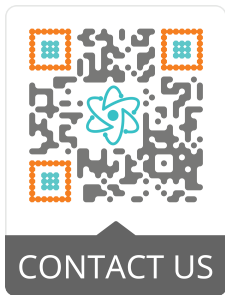
SPECIFICATIONS

Model:	LEADPTeslaCCSBLKUS
Rated current:	500 A
Rated input / output:	1,000 V
Weatherproof rating:	IP67
Operating temp:	-22°F - 122°F
Storage temp:	-40°F to 185°F
Connector:	CCS1
Inlet:	NACS Supercharger
Weight:	2 lbs
Materials:	PC/PA66/Copper

Disclaimer: The Lectron Vortex Plug (NACS to CCS1 Adapter) is exclusively intended for safe use with CCS1 compatible vehicles authorized by Tesla for Supercharger Access. For detailed compatibility information, please contact your vehicle supplier.

GET MORE SUPPORT

Need assistance?
Scan the QR code below or email us at
contact@ev-lectron.com



LECTRON

www.ev-lectron.com

Made in China