

Concrex[®] Colours, Concrex[®] Colours Rapid, Concrex[®] Colours Cold Set

Heavy duty floor repairs in a range of colours

Watco Concrex Colours provides heavy duty repairs which will blend with existing coloured floors. It can also be used as a coloured screed to provide an attractive, virtually indestructible floor surface.

Compared with other repair mortars this formulation is particularly rich in epoxy resin. This provides superior strength and adhesion, making it ideal for very thin section, feather-edge or intricate repairs. Maximum strength is achieved at only 5mm thick.

May be applied at up to 50mm thick for patch repairs. For larger, deeper repairs, build up in layers of approximately 50mm. Alternatively use Watco Concrex Deep Fill finishing with a 5mm layer of Concrex Colours.

Watco Concrex Colours can be used at temperatures of 10°C and above. Watco Concrex Colours Cold Set is available for cold weather repairs down to 0°C.

When used as a screed to resurface larger areas, we recommend sealing with one coat of Watco Epoxy Gloss Coat in a similar colour to make cleaning easier.

A repair using Watco Concrex Colours is ready for light traffic in 3-6 hours, and heavy traffic after 8-12 hours. Watco Concrex Colours Rapid will take heavy traffic after only 3 hours, keeping downtime to a minimum.

Use in heavy wear areas where other repair mortars would fail - make your floor repairs permanent with Watco Concrex Colours.



Areas of use:

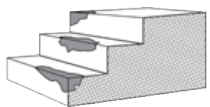
Permanent repairs for:

- Holes in concrete floors
- Damaged steps
- Broken floor joints
- Eroded, uneven concrete

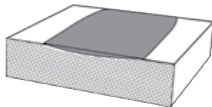
Features:

- Heavy duty, two part epoxy resin mortar
- Range of colours to blend with existing coloured floors
- Virtually indestructible
- Rapid setting and cold setting versions available
- Good chemical resistance
- Resin rich for thin section and feather-edge repairs
- suitable for heavy traffic

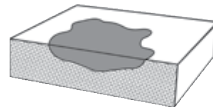
Where to use Watco Concrex[®] Colours



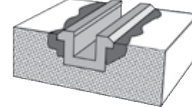
Damaged steps



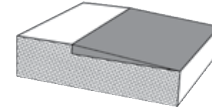
Worn floors



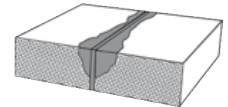
Holed floors



Fitting guide rails



Different levels



Spalled expansion joints

Need help? Speak to the experts

Our dedicated and professional team are here to help you get the best results for your project. They will talk you through the preparation and application stages when using **Concrex Colours**.

Call our expert team on: **01483 418 418** (Weekdays 8:00am - 5:30pm. Saturday 9:00am - 12:00pm)



Concrex[®] Colours, Concrex[®] Colours Rapid, Concrex[®] Colours Cold Set

Heavy duty floor repairs in a range of colours

1 Surface Preparation

Surfaces should be clean, dry and free of all loose material. Wire brushing or sweeping is generally sufficient. Watco Bio-D degreaser can be used to remove grease and oil. If the surface is damp, it can be primed with Watco Tack Coat.

2 Priming

The resin content of Watco Concrex Colours is very high. This means that a primer is not usually required when filling holes in concrete floors or resurfacing rough or damaged concrete. Watco Tack Coat adhesive primer is recommended when using Concrex Colours as a thin section screed over smooth surfaces. It is also recommended when repairing intricate/high impact areas such as broken floor joint edges and damaged step nosings.

3 Mixing (wear protective gloves)

The resin and the sand are already pre-blended and is supplied with tins of coloured curing agent - 1 tin in the 10kg pack and 2 tins in the 25kg pack. The curing agent is added to the sand/resin at point of use and once mixed, the mortar should be used within 30-60 minutes depending upon temperature.

Do not mix inside the plastic bucket. Tip the sand/resin into a mixing tray or on a board.

Shake the tin of curing agent, then open and stir thoroughly.

Form the sand/resin into a mound and leave a small hole in the middle. Empty the curing agent into the hole ensuring the tin is completely drained.

Carefully mix the aggregate with the curing agent using a trowel until a smooth mortar is obtained; this will take several minutes. The more thorough the mixing, the 'wetter', smoother and more manageable the mix becomes.

Alternatively, you can knead the mixture by hand wearing suitable gloves. It is important to mix thoroughly until you achieve a consistent colour. A 'Cretangle' or suitable open pan mixer can be used to mix large quantities.

4 Application

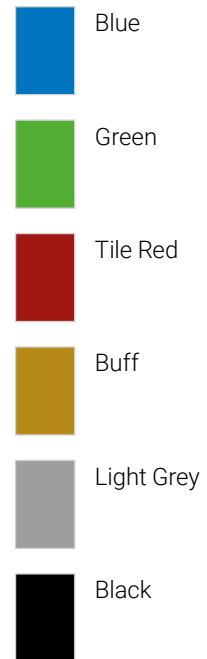
Trowel the mortar firmly into the repair and finish with a trowel or float. To get a good smooth finish, regularly wipe the surface of the trowel with a cloth dampened with white spirit.

Watco Concrex Colours is normally applied at 5-50mm thick, but repairs can be feather edged if most of the repair is at least 5mm thick. For repairs deeper than 50mm, apply in separate layers allowing 6-8 hours between layers. Alternatively use Concrex Deep Fill which can be applied at 15-100mm thick in one layer, finishing with 5mm of Concrex Colours.

5 Safety

Material Safety Data Sheets are available.

Colours



Concrex[®] Colours, Concrex[®] Colours Rapid, Concrex[®] Colours Cold Set

Heavy duty floor repairs in a range of colours

Specification

Composition	Finely graded sand pre-blended with resin. A 10kg unit includes 1 tin of coloured curing agent, and a 25kg includes 2 tins of coloured curing agent.
Primer Required	See 'Priming' section on p.2
Usage Interior/Exterior	Interior & exterior.
Working Life	30 - 60 minutes depending upon temperature.
Application Tools	Steel float or trowel.
Suitable For	Concrete, sand & cement and metal.
Pack Sizes	10kg, 25kg.
Coverage	10kg: 1.2m ² at 5mm thick. 25kg: 3m ² at 5mm thick.
Shrinkage (on cure)	Negligible.
Damaged by Frost	No
Can be Feather-edged	Yes, around the edge of a repair – full strength at 5mm thick.
Application Thickness	Up to 50mm for hole filling only. Do not use at more than 15mm for screeding, instead use Watco Concrex Deep Fill finishing with a 5mm layer of Concrex Colours.
Cleaning Tools	Use white spirit before Concrex Colours cures.
Shelf Life	12 months in unopened container.
Storage	Between 10°C - 30°C. Do not allow to freeze.
Chemical Resistance	Resistant to spillages of many chemicals at 20°C commonly used within industry, including: paraffin, petrol, fuel oils, alcohols, dilute nitric, sulphuric and hydrochloric acids, sugar solutions, oxalic acid, citric acid, caustic soda, salt solutions, cutting oils, mineral oils. Advice given regarding other chemicals.
Principle Limitations Please contact us regarding applications not described here.	Do not apply to wet surfaces. Watco Tack Coat should be used for application to damp surfaces before applying Watco Concrex Colours. Do not apply thicker than 50mm in one layer – see section headed 'Application' on P.2. Watco Concrex Colours should not be subjected to temperatures above 60°C.

Concrex[®] Colours, Concrex[®] Colours Rapid, Concrex[®] Colours Cold Set

Heavy duty floor repairs in a range of colours

Curing Times

	Light Traffic	Heavy Traffic
Concrex [®] Colours (at 15-20°C)	3-6 hours	8-12 hours
Concrex [®] Colours Rapid (at 15-20°C)	2 hours	3 hours
Concrex [®] Colours Cold Set (at 0°C)	24 hours	48 hours
Concrex [®] Colours Cold Set (at 10°C)	6 hours	8 hours

Strength

Concrex[®] Cold Set/Colours Cold Set is far stronger than concrete. The table shows a comparison (typical figures).

	Tensile Strength	Flexural Strength	Compressive Strength
Watco Concrex[®] Colours	15.4 MN/m ²	55.9 MN/m ²	55.2 MN/m ²
Concrete	3.4 MN/m ²	6.9 MN/m ²	21.41 MN/m ²