



Side Scoop Installation Guide for Standard and Wide Scoop Kits

Thank you for your purchase of the GRP Side Scoop Bracket kit.

Check your package for the proper contents before getting started.

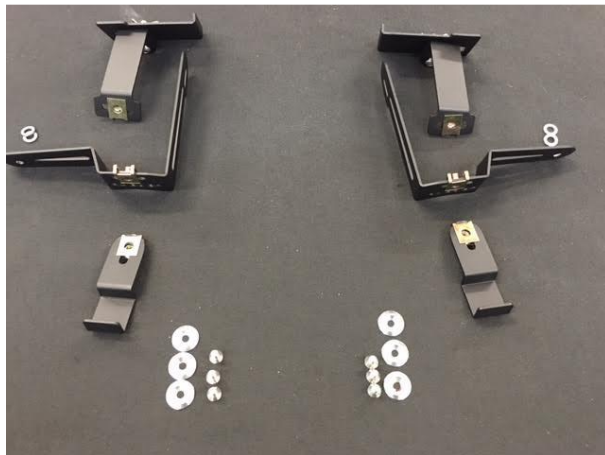
--Driver Side and Passenger side top bracket assemblies (Small plate with 6mm clip nut, large flange plate, angled top bracket w/M5 clip nut installed, M6x25 allen head bolt)

--Driver Side and Passenger Side Middle Bracket (M5 Clip nut installed, 2-M6 washers)

--Universal Bottom Bracket (M5 Clip nut installed)

--Outer hardware (6 flush head washers, 6 flush head allen bolts)

--(25mm Spacers included with wide scoops)



Tools needed:

Jack , Lug nut key/socket, Phillips screw driver, 10mm end wrench, 10mm socket with ratchet, 3mm allen wrench/socket, 4mm allen wrench/socket

1. Raise Car in a safe manor, Remove rear wheel/s, you can do this one side at a time.

2. Remove wheel well liner by removing the 6 plastic screw rivets that hold it in place.



3. Next remove the OEM Plastic side grille. The air intake and snorkle will also need to be removed on the driver's side.

The black plastic grille has two fasteners and a series of clips. One of the bolts is shared with the body work just inside the seam line of the forward fender. The other is on the other side of the grille opening. The grille will now slide backwards, out of the clips at the top, bottom and inside middle.



4. Install the appropriate top bracket (driver side or passenger side) assembly into the square opening in the clam tucked under the outer edge just behind the door. This will take some wiggling back and forth to feed the square bracket into the opening, it is sized just right. Once you have the bracket fed in, Lightly tighten the assembly down as shown below.



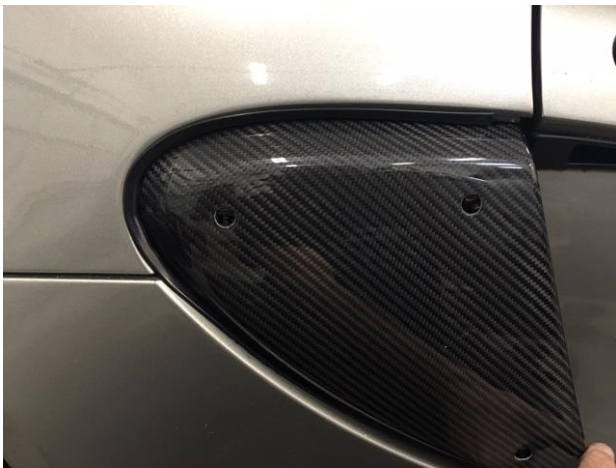


5. Next install the appropriate middle bracket using the oem bolts from the side grill. Be sure to use the two supplied washers on the outside non-slotted hole opening. Not doing so can result in paint DAMAGE! Some cars came with longer bolts than others for this location so it is safe practice to use two washers. Lightly snug the bolts down once in place.





6. Next test fit the Side scoop in place, look closely at the top two hole locations, the outer edge of the carbon vs. the black trim on the clam as well as the bottom edge of the scoop where it meets the bottom rocker panel.





You can see here that the middle bracket is sitting too high and the top bracket is tucked in too far. Adjust the brackets accordingly, some light bending may be required on the top bracket, unfortunately no two Lotus' are identical so fitment is never perfect right out of the box. Be patient and use the slotted holes in the brackets to your advantage as well. Tighten down the brackets once they are in the desired locations

You should be able to clearly see the threaded clip nut lined up with the hole when its in the correct location.

7. Next loosely install the bottom bracket onto the scoop using the supplied flat head allen bolt and the supplied washer (those with wide scoops will also need to install one the supplied spacers behind the scoop) :



8. With the bottom bracket installed loosely, using a rolling motion hook the bracket inside of the bottom rocker panel and carefully slide/push the scoop up into place. Install the top two outer bolts and washer in the remaining holes in the scoop (those with wide scoops will also need to install the supplied spacers between the scoop and brackets). Double check your fitment, adjust as necessary and tighten up the bolts.



Repeat these same steps for the other side and enjoy your new Carbon Fiber Side Scoops!!

If you have any questions that are not covered in this guide feel free to email us at:
gregsraceparts@gmail.com