



## Downshift Blip Module

### Lotus Evora

**Plug-and-Play:** Clutch Pos. Sensor, AND Throttle Pedal

**Posi-Tap:** 12V Brake light signal, GND, System 12V

Please be sure to completely read this instruction sheet before beginning installation.  
Direct any questions to support@xineering.com

#### What's Included:

1. 20 Pin main harness - 12V Power/GND/Brake/Clutch
2. Inline pedal harness (OEM Specific Male-Female Pedal Harness)
3. Inline clutch pedal harness
4. USB cable for connecting to PC Program and/or Android APP (USB OTG adapter for your device required)

#### Prepare for installing the blip module in the center console or glove box.

1. Power wire connections:
  - Connect the **ORANGE** wire to 12V power, powered when ignition ON and RUN.
  - Connect the **BLACK** wire to chassis/power ground.
2. Connect the Clutch position Male/Female plug in line with the OEM plug.
3. Using the supplied POSI-Tap connect the BROWN wire to Pin 4 (GRN/VIO) of the Brake Pedal Switch.
4. Plug in the throttle pedal harness to the throttle pedal and ECU/chassis harness. Connect the 6 pin end to the Blip Module main harness, 20 Pin.

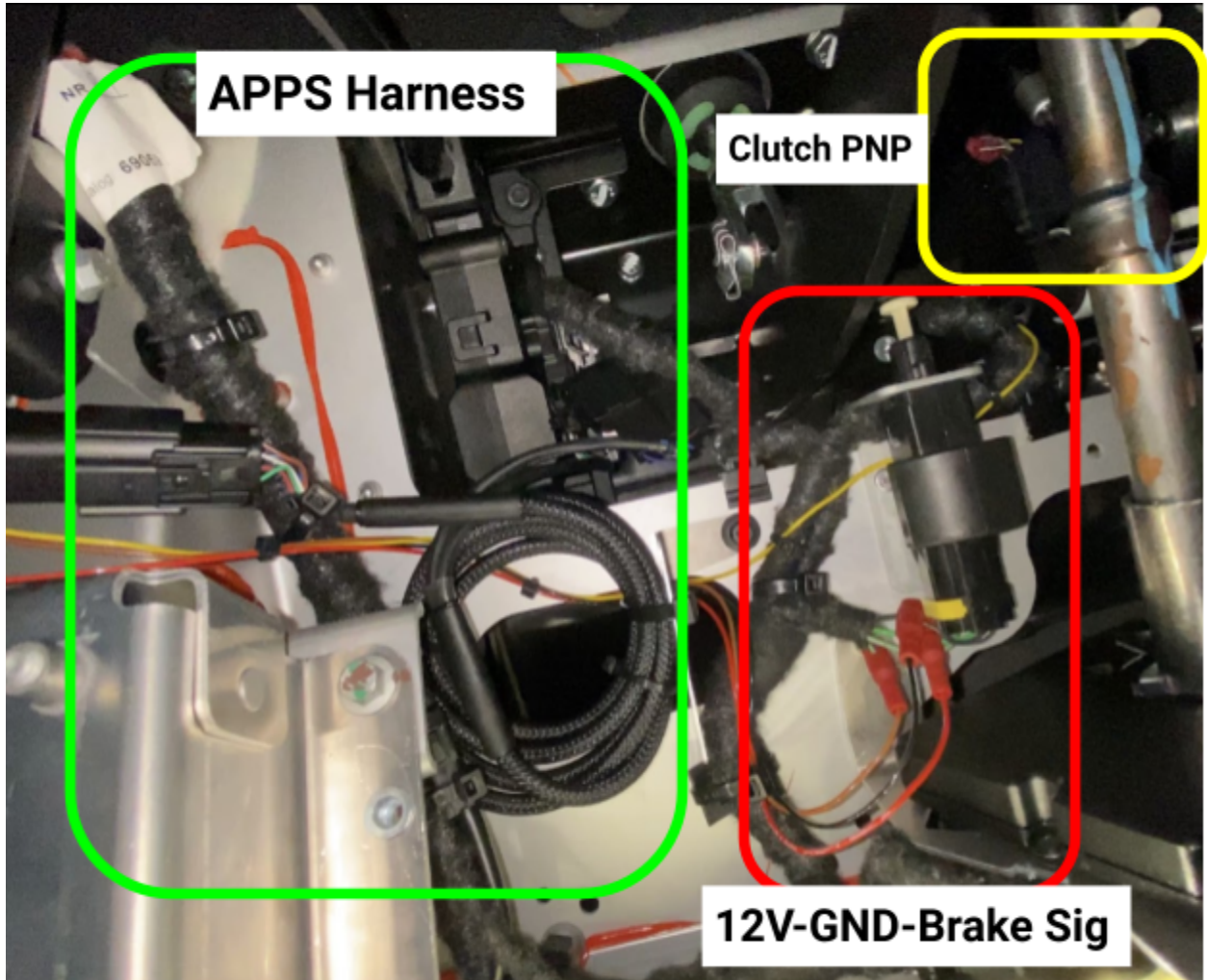
**Throttle BLIPS once when the  
Brake Light Voltage is 12V "FIRST"**

**THEN Clutch Pedal Signal goes above 2.7V**

**NOTE:** The module will be ready to blip again, after the clutch is released.

Pin#	Color	Signal
1	BLK	GND System
11	ORG	+12V PWR
3	BRN	Brake 0->12V
14	YEL	Clutch 0->5V

**APPS Harness, 12V-GND-Brake Signal,  
and Plug-And-Play (PNP) Clutch Harness**



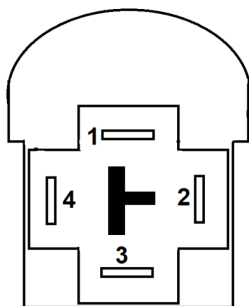
## Brake Switch Pinout

An inline switch from the **constant 12V source** at the brake switch is **REQUIRED**

-OR-

**HIGHLY recommended** locate another **switched 12V ignition** (turns on and off with the ignition) source within the vehicle.

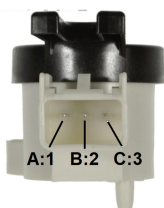
1	BLK	GND	System GND
2	GRN	Constant 12V	Possible 12V
3	GRN/TAN	0-5V	—
4	GRN/VIO	0.3-12V	Brake Sig



## Clutch Sensor Pinout/PNP Install

Simply unplug the OEM sensor harness and plug in the PNP Clutch Harness (3 Pin GT150)

1	BLK	GND
2	PNK/BLK	SIG
3	GRY	5VRef

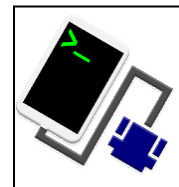




## Android App Instructions

Install 'Serial USB Console' App from the Google Play store on to an android phone OR tablet.

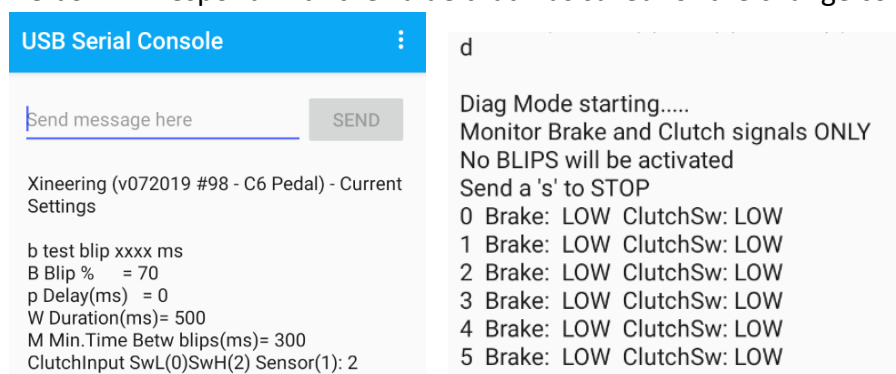
It already has all the drivers needed to 'talk' with our blip module via USB and USB OTG cable (supplied) to an Android device.



Upon start up, Select OK twice to allow connection to our blip module.

It will automatically set up any connection settings.

The first serial command will display the current settings and serial number of the blip module. To change any of those settings enter the change Command followed by a number. The box will respond with the value that was saved for the change command.



Name	Command	Range
Read Settings	R	Output settings
Blip	B	0-100% (5% Increments)
Delay	p	0-1000 (ms)
Duration	W	0-1000 (ms)
MinTime	M	0-1000 (ms)
Clutch Set	T	0-100%

### Example: (CASE SENSITIVE)

**R** then click SEND, box responds with the settings

**B** 100 then click SEND, box responds with 100 = sets Blip 100%

**p** 250 then click SEND, box responds with 250 = sets pre-blip delay 250 ms

**W** 1000 then click SEND, box responds with 1000 = sets blip duration to 1000 ms

**M** 300 then click SEND, box responds with 300 = sets min. time between blips to 300 ms

**d** Start Diagnostic Mode

**s** to STOP Diag Mode

**Test blip via USB**, send 'b' and a duration (50-1000ms):

**Example: b 250** will blip the throttle to the set % for 250ms

**Diagnostic mode**, send 'd' and a data log will start showing the status of the brake and clutch signals and if a BLIP has been registered. No blips will occur in this mode.

Send 's' to stop diagnostic mode.



## Windows PC program Instructions

**Step 1:** Download and extract the Blip Control zip file from Xineering.

<https://www.xineering.com/downloads.html>

Scroll to the Software section: Download **BlipControl Software** zip file

Be sure to download it somewhere you will remember, like desktop or downloads folder.  
The extracted folder will have a resources folder and BlipControl\_V#.exe.

The program can be run directly from the extracted folder.

**Step 2:** Connect the USB cable to your PC and Blip Module

**Step 3:** Open the BlipControl\_V#.exe and select the COM port # the blip module is connected. If there is only one shown, select that one.

The settings will be automatically read out when a connection is made.

**For more help click the -INFO v1.0- button in the About Tab**

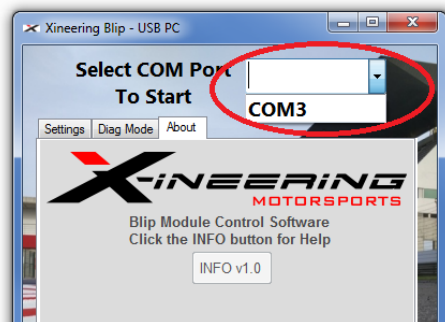
### **NOTE:**

If no new COM Port shows up in Device Manager then you need to install the device drivers (See Device Manager pic below)

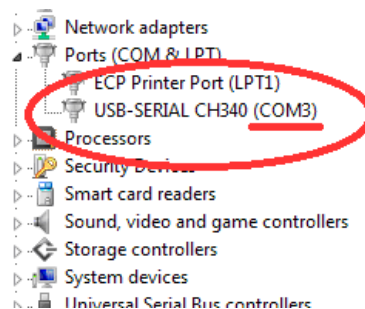
Download the USB Serial Drivers from our website, run the setup.exe.

<https://www.xineering.com/downloads/CH340Driver.zip>

**It is recommended to always connect the blip module USB to the same port of your computer to retain the same serial COM #.**



**BlipControl\_Vx.exe**



**Device Manager (Ports)**