

Video Instruction

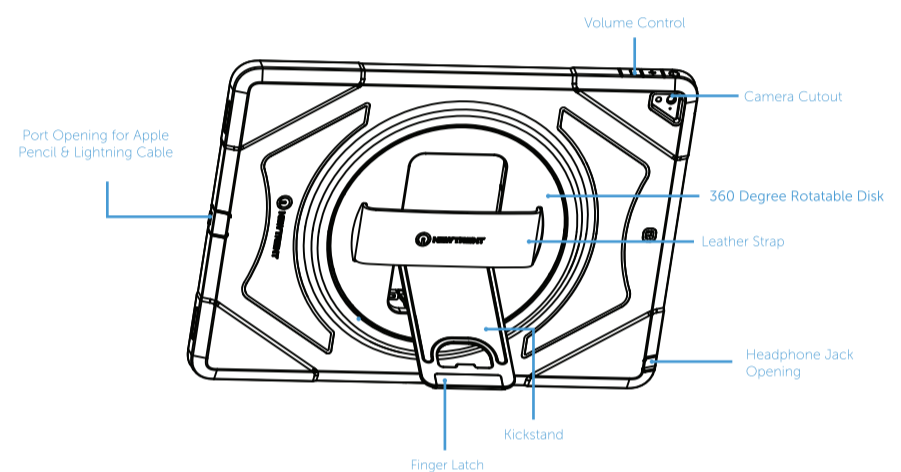


Visit newtrent.com/support/video.html for a video instruction of **NT612GR**

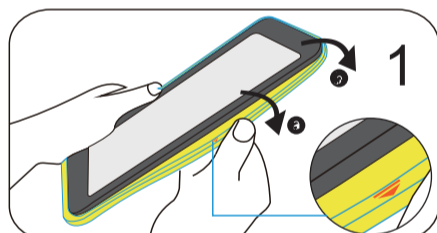
Contact us at www.newtrent.com/contact

New Trent
San Jose, CA USA
www.newtrent.com
support.newtrent.com
Designed in California
Made in China

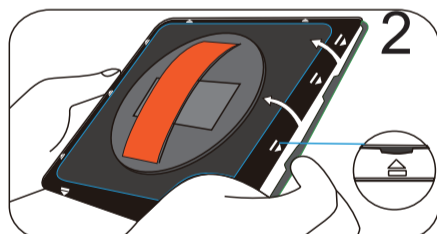
Gladius Pro NT612GR



Note: Before placing iPad into case, it is recommended to remove previously installed screen/case protectors to ensure a snug fit.

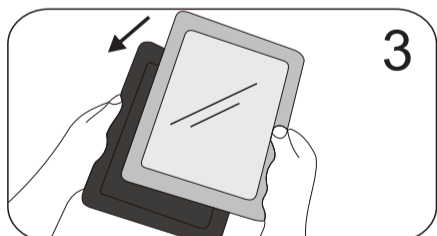


1 Remove the TPU cover by peeling it away from the internal hard case.



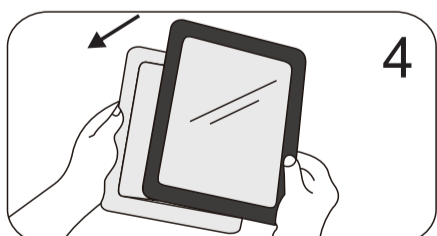
2 Locate the arrows around the internal hard case and release each tab on all sides to release the back cover.

Test out the hand strap size. Adjust if necessary. (See "Leather Strap" Section)

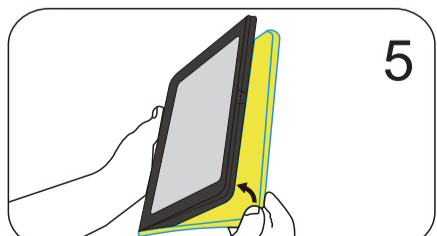


3 Put the iPad in the back cover

Reminder: Clean the iPad screen before the next step.

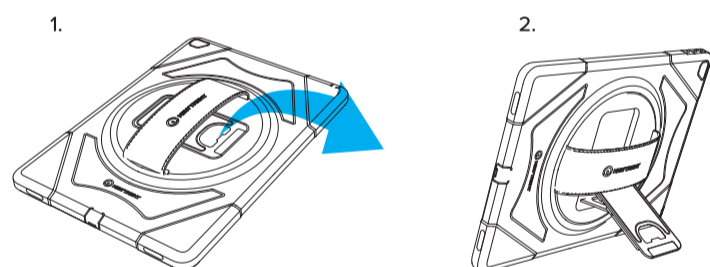


4 Install the front cover over the iPad, and make sure all the clips are fastened properly.



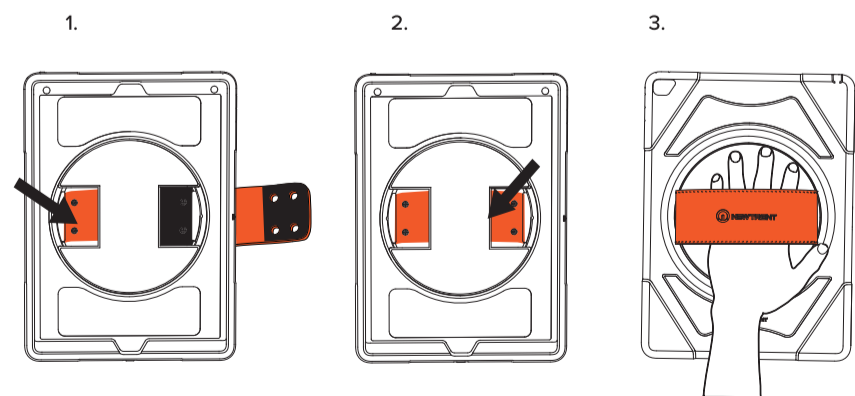
5 Reinstall the TPU cover. Make sure all of the ports and edges are perfectly aligned for protection.

Adjusting the Arm Stand



1. The arm stand is located under the leather strap. Gently lift the stand out with the finger latch.
2. Once the kickstand is fully extended, place the case on a flat surface.

Adjusting and Installing the Leather Strap



1. First secure the leather strap over the pins on one side. Adjust the strap length relative to your hand size accordingly.
2. Secure the leather strap over the pins on the other side.
3. After securing the strap, insert the iPad into the case
4. Use the leather strap to rotate the case. **Do not use the kickstand to rotate the case.**