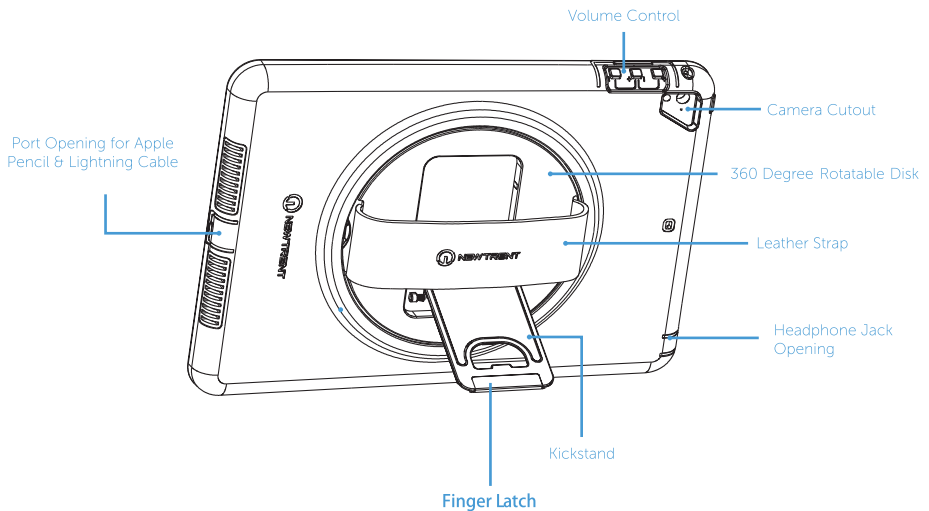
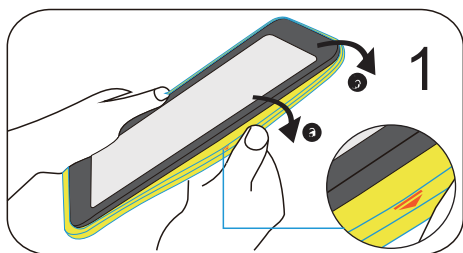


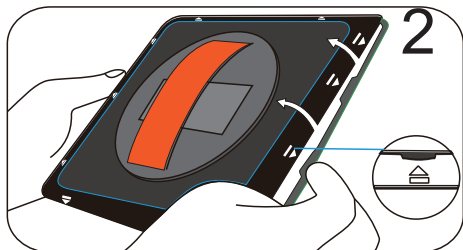
Gladius NT611GR / NT611GR-R / NT613GR



Note: Before placing iPad into case, it is recommended to remove previously installed screen/case protectors to ensure a snug fit.

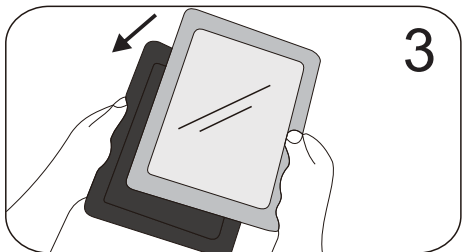


Remove the TPU cover by peeling it away from the internal hard case.



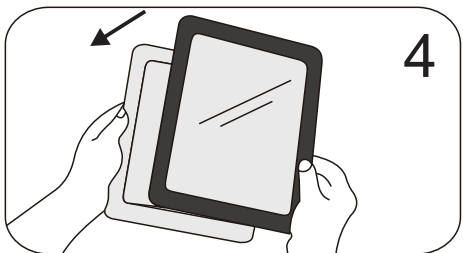
Locate the arrows around the internal hard case and release each tab on all sides to release the back cover.

Test out the hand strap size. Adjust if necessary. (See "Leather Strap" Section)

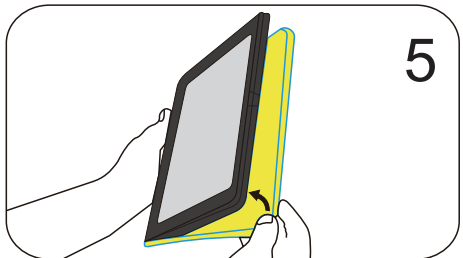


Put the iPad in the back cover

Reminder: Clean the iPad screen **before** the next step.



Install the front cover over the iPad and clip on all sides.



Reinstall the TPU cover. Make sure all of the ports and edges are perfectly aligned for protection.

Video Instruction



Visit newtrent.com/support/video.html
for a video instruction of **NT611GR / NT611GR-R /**
NT613GR

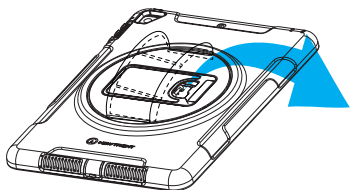
Contact us at www.newtrent.com/contact

New Trent Inc.
San Jose, CA USA
www.newtrent.com
support.newtrent.com

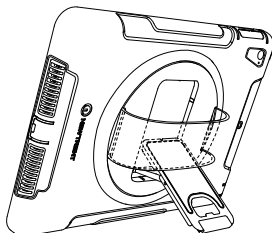
Designed in California
Made in China

◆ Adjusting the Arm Stand

1.



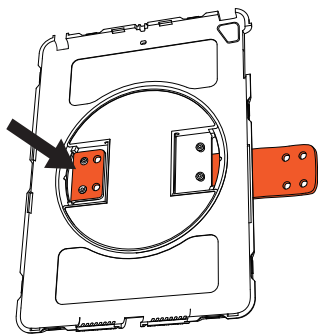
2.



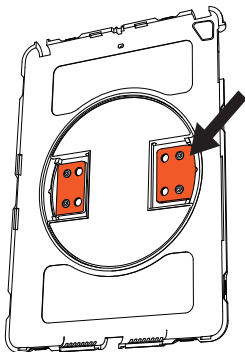
1. The arm stand is located under the leather strap. Gently lift the stand out with the finger latch.
2. Once the kick stand is fully extended, place the case on a flat surface.

◆ Adjusting and Installing the Leather Strap

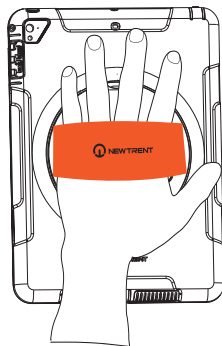
1.



2.



3.



1. First, secure the leather strap over the pins on one side. Adjust the strap length relative to your hand size accordingly.

2. Secure the leather strap over the pins on the other side.

3. After securing the strap, insert the iPad into the case.

4. Use the leather strap to rotate the case. **Do not use the kickstand to rotate the case.**