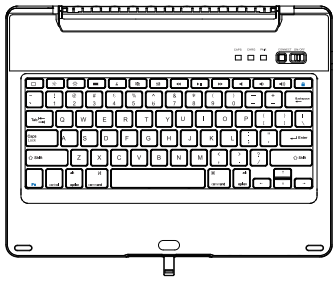


## Keyboard

- ☐ Main screen/Esc
- ☼ Brightness -
- ☼ Brightness +
- ☒ Virtual Keyboard
- ✂ Cut
- 📄 Copy
- 📄 Paste
- ⏪ PrevTrack
- ⏮ Play/Pause
- ⏭ NextTrack
- 🔇 Mute
- 🔊 Volume +
- 🔒 Lock screen
- fn Function
- ⌫ Delete
- ⌘ Command
- 🔊 Volume -



DC.5V. Input

### Hot Key

fn - function key: Press and hold the FN key to activate the blue characters on the keyboard.  
press **fn + fn** : lock screen

### Language Toggling

iOS 8 and previous iOS: hold FN and tap SPACE Bar or hold CMD and tap SPACE Bar

iOS 9 until current iOS 11: hold CTRL and tap SPACE BAR

\*Arrow keys are for navigating within text fields rather than web page browsing (Varies if application supports it)

## Troubleshooting

- If the keyboard is not working with the iPad, make sure that:
- 1) The Bluetooth function on the iPad is enabled.
  - 2) The keyboard is within 33 ft. of the iPad.
  - 3) The passcode is entered correctly.
  - 4) Restart your device.
  - 5) Make sure the keyboard has power. Recharge if needed.
  - 6) If you press the CONNECT button when both devices have been connected already, it will disrupt the established connection. As a result, the keyboard may not respond to the iPad/device properly. To resolve the issue, simply restart the keyboard by turning it OFF and then back ON again.
  - 7) Try it with a different smart device with Bluetooth technology.

## Product Specifications

- 1) Transmit Range: up to 10 meters
- 2) Range of Frequency: 2.4GHz Spectrum
- 3) Operating Voltage: 3.7Vdc (powered by Li-ion)
- 4) Operation Current: <5mA
- 5) Standby Current: 1.0mA
- 6) Sleep Current: <0.25mA

This device complies with Part 15 of the FCC Rules: Operation is subject to the following two conditions:  
1. This device may not cause harmful interference.  
2. This device must accept any interference that is received, including any interference that may cause undesired operation.

Do not store keyboard for over a month without usage. We suggest charging the battery from low power to full at least once a month to preserve battery life.

Keep the keyboard away from the high temperature. Do not leave the keyboard in a hot car. Do not leave the keyboard under the sun. Heat degrades the battery life.

\*Disassembling the keyboard will void warranty.

New Trent Inc  
San Jose, CA USA  
Contact us:  
[www.newtrent.com/contact](http://www.newtrent.com/contact)



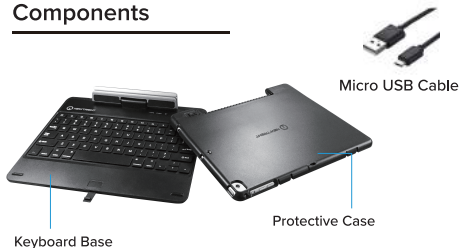
## Airbender Star NT55B/NT56B

Bluetooth Wireless Keyboard for iPad Pro 9.7 inch, iPad Air, Air 2, iPad 5th & 6th Gen (2018)



*Caution: To properly operate this product, please read the user manual thoroughly. The information in this manual is subject to change without notice as the product will be continuously improved*

## Components



## Installation



- (1) Align the ports and insert iPad into protective case
- (2) Check the tabs from the protective case that holds the iPad in place
- (3) Align protective case to the keyboard
- (4) Check to ensure that the protective case is secured to the keyboard

## Removing iPad Pro from Protective Case



- (1) Slide and hold the locking mechanism switch on the Protective Case
- (2) Separate the Protective Case from the Keyboard Base.
- (3) Gently remove the iPad from the case

Visit [newtrent.com/support/video.html](http://newtrent.com/support/video.html) for a video instruction of NT55B

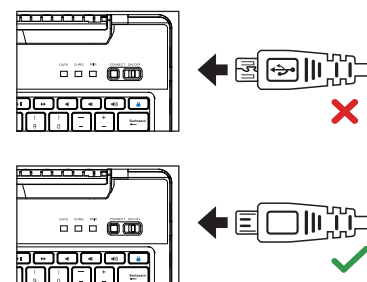
## Keyboard

### LED Light Indicator

- Blue LED Blinking: Pairing
- Red LED on: Charging
- Green LED on: Battery is fully charged
- Green LED blinking: Low battery
- Yellow LED on: Caps lock

### Charging

- (1) Connect the micro USB charge cable (included) to charge the keyboard.
- (2) For 1st time use, please charge the keyboard for about 6 hours before using it.
- (3) When the battery becomes low, LED (Green) is blinking, please recharge the keyboard. You may still use the keyboard while charging.



### Pairing

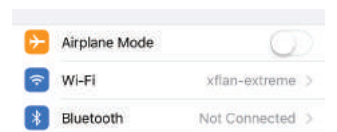
Before you can use this keyboard, you must first pair it with your iPad. You will only need to perform the pairing once.

- (1) Slide the on/off switch to turn on the keyboard and press the CONNECT button on the upper right of the keyboard. The LED light will blink blue.
- (2) On the iPad search Setting > Bluetooth. enable the Bluetooth function to begin searching for the Bluetooth keyboard automatically.
- (3) Select "New Trent Keyboard" from the discovered Bluetooth devices list. A passcode will appear on the iPad screen. Proceed by typing the passcode using New Trent keyboard, and press ENTER key to complete the syncing process. When you see the status changed to "Connected", New Trent Bluetooth keyboard should now be good to use with your iPad.

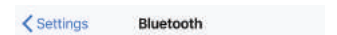


Settings

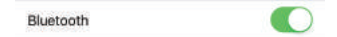
1



2



3



3

OTHER DEVICES

New Trent Keyboard

4

### Bluetooth Pairing Request

Enter the code "9980" on "New Trent Keyboard", followed by the return or enter key.

Cancel

5

Bluetooth

MY DEVICES

New Trent Keyboard Connected

6