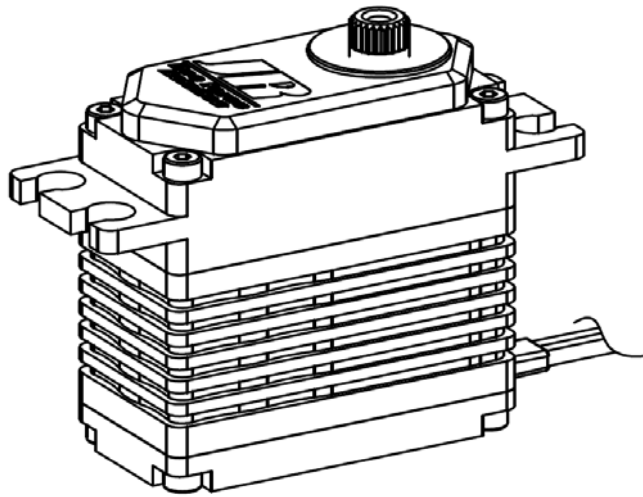


S8912SHV

Specification



DeeForce, Inc

Redondo Beach, CA, U.S.A.
WEB: <http://www.deeforce.net>
Email: sales@deeforce.net

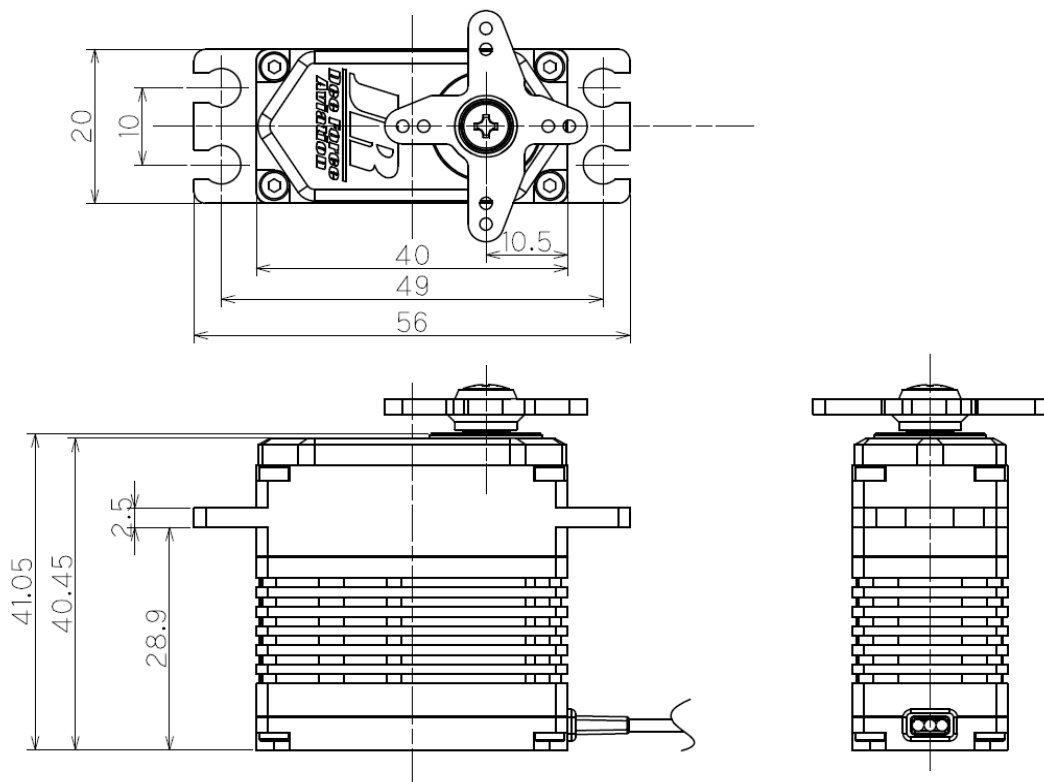
Specification (1 / 2)

Model Name	S8912SHV	
Command Style	XBUS / RC PWM	
Signal Voltage Levels (XBUS / RC PWM)	TTL - LevelHIGH:min.2.3 V,max.5.0 V TTL - LevelLOW:min.0.0 V,max.1.2 V	
Frame Rate (XBUS)	under Free mode / 1...1500 mSec under Hold mode / 1...∞ mSec	small framerate is depended on packet size
Frame Rate (RC PWM)	under Free mode / 3...1500 mSec under Hold mode / 3...∞ mSec	
Serial Signal Spec (XBUS)	3.3V TTL 1-line half duplex 8bit 1-startbit 1-stopbit non-parity LSB-first Idle High Level 250kbps BER under 1%	
Valid Pulse Lengths (RC PWM)	0.85...2.15 mSec	
Pulse Length for Position Left/Center/Right (RC PWM)	0.9 / 1.5 / 2.1 mSec	
Resolution (XBUS)	56000 steps / full swing	
Resolution (RC PWM)	1 μs	

Specification (2 / 2)

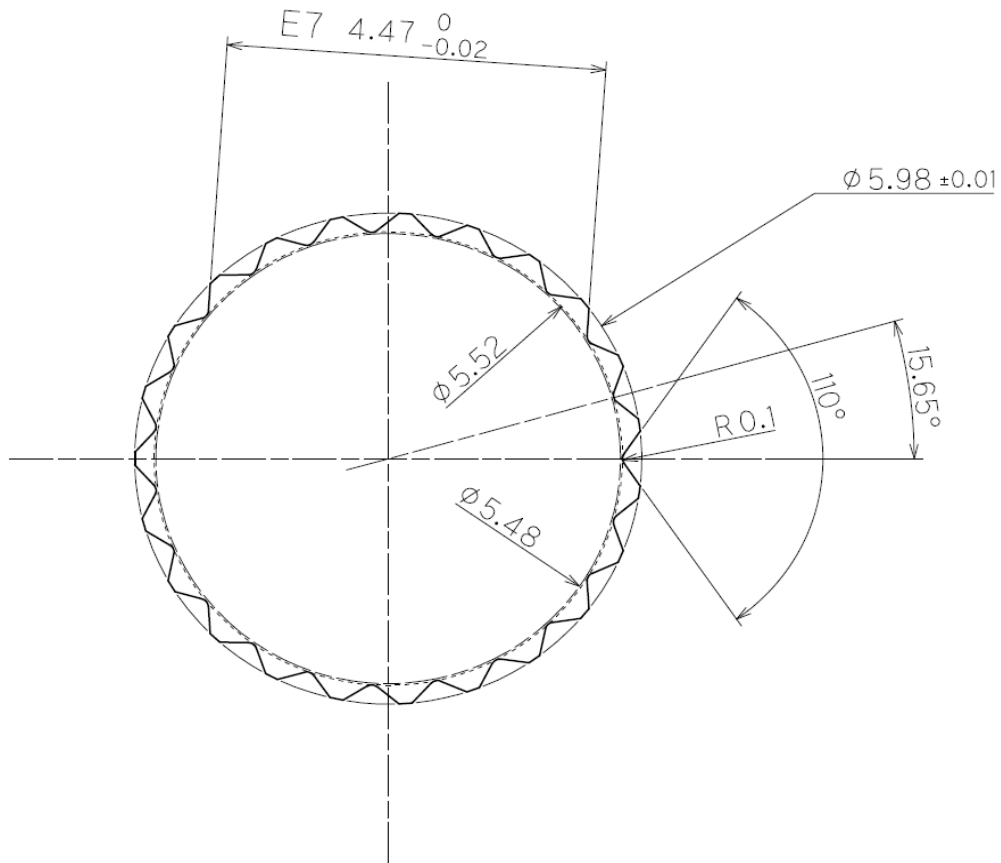
Model Name	S8912SHV	
Operation Voltages	7.4v-12.6v	
Idle current	0.015 A	
Peak current	3.2 A	
Stall toque	6.86 Nm(12.6v)	*7.85 Nm/14.4v
Holding toque	14.7 Nm(3sec)	*16.8 Nm/14.4v(3sec)
Speed(60degrees)	0.11 sec(12.6v)	
Default Travel Angle	120 degrees	
Max. Travel Angle	150 degrees 180 degees	Programming Tool required
Backlash (mechanical)	<0.5 degree	
Potion error	±2 %	
Operational Temperature	-20°C — 65°C	
Motor Toque	25.2 mNm(12.0v)	
Gear raito	333.7	
Motor rpm	28500 rpm(12.0v)	
Gears	Hardened SUM24,45C	
Gear Shaft	SUS	
Bearings Upper	12 x 6	
Bearing Bottom	10 x 6	
	Tolerance ±10%	

Dimensions



(Unit : mm)

Sellation



6mm - 23 Tooth

(Unit : mm)