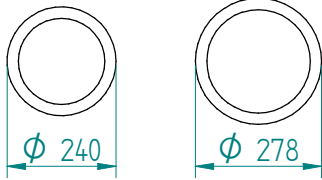


Dispenser: 03.1736.NC DFE 280 heated
heating element 230V-400W

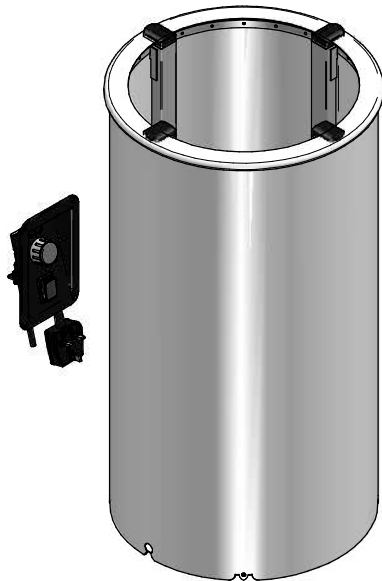
Crockery:



from to

Dimensions: weight (empty): 9 kg

- A = flange
- E = cut out
- H = build in height
- S = effective stacking height
- y x z = cut out operating panel

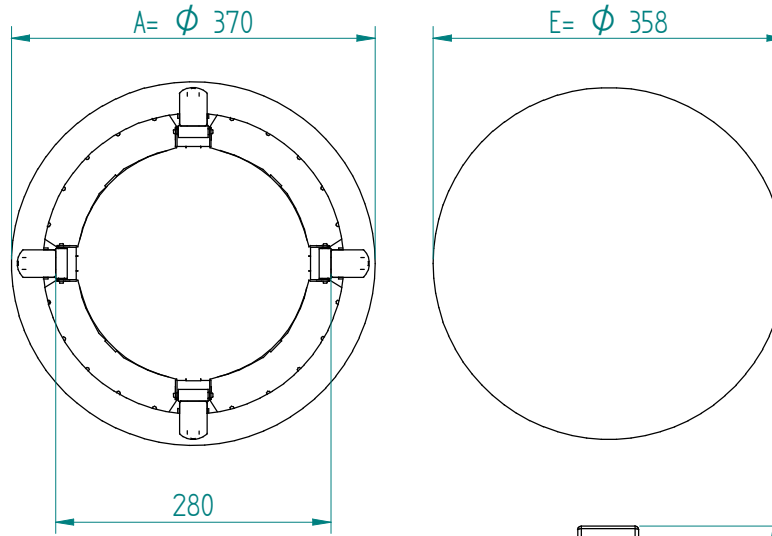


MUKL

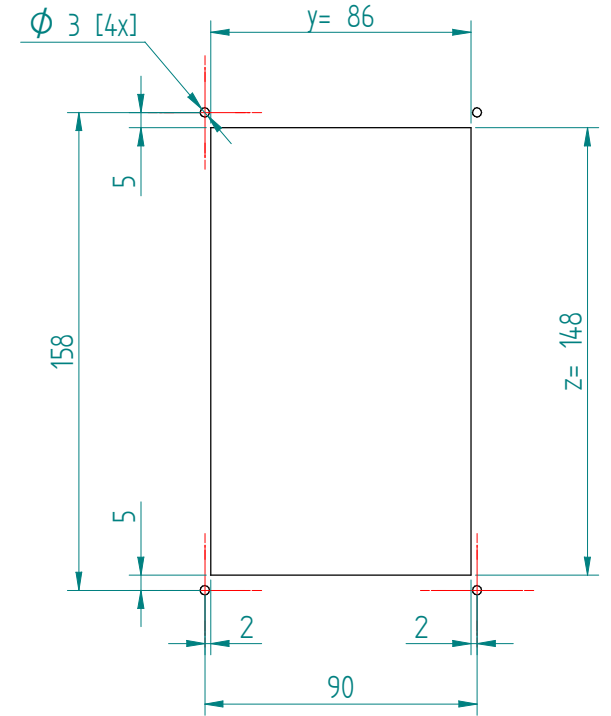
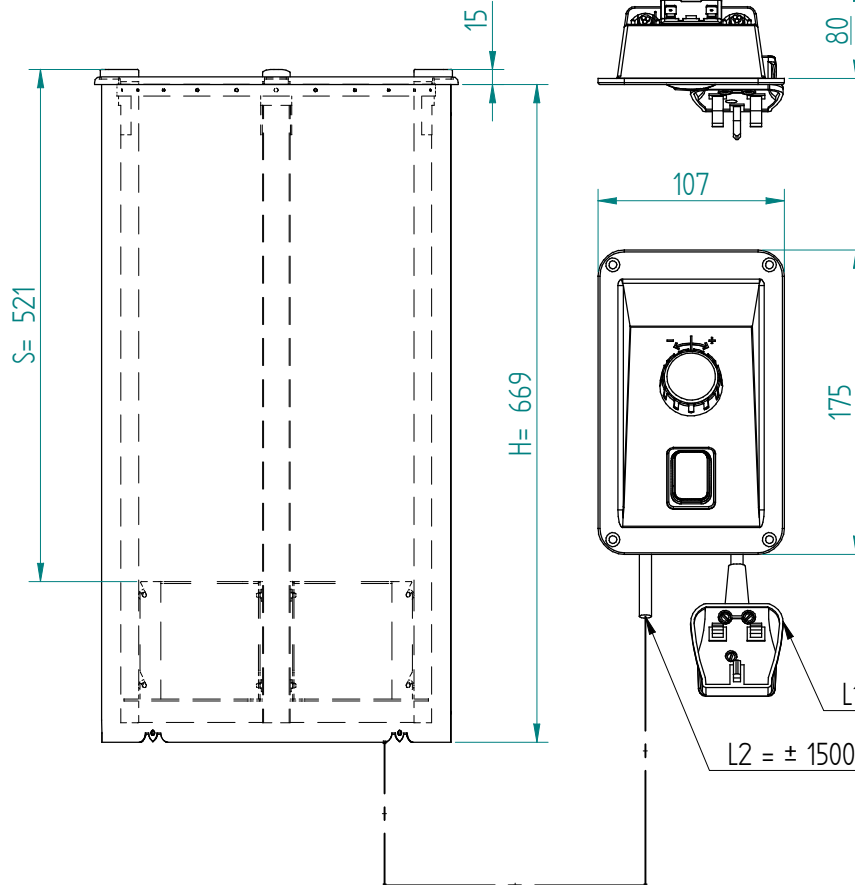
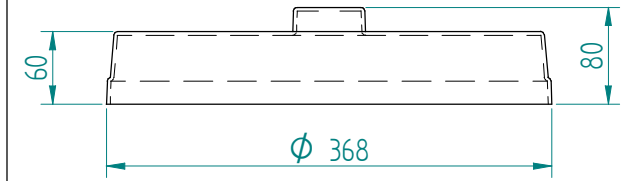
VR :

IR :

MOBILE CONTAINING



options, order separate;
pc cover: 91.5030



L1 = length cable with plug
L2 = length cable between tube and operating panel