

install guide

dish rack drain spout replacement



video guide

Drain spout assembly PD6268, PD6258
for steel frame dish rack KT1190, KT1181

Removing Drain Spout

1. Remove utensil holder and plate holder from dish rack.



2. Locate locking knob.

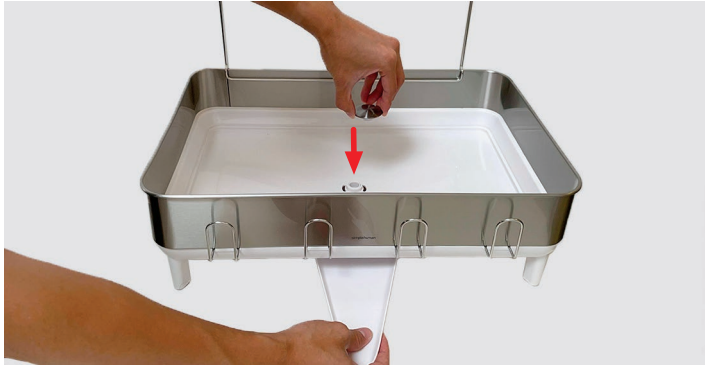


3. Hold spout in place, then twist locking knob counter-clockwise until completely loosened.



Installing Drain Spout

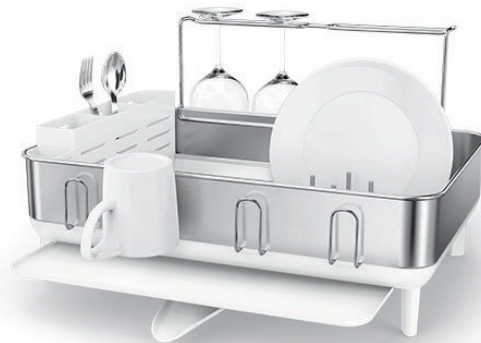
1. Thread new drain spout through center hole on dish rack.



2. Hold spout in place, then twist locking knob clockwise until knob is completely secured.



Final Result



product questions or returns
customer.support@simplehuman.com