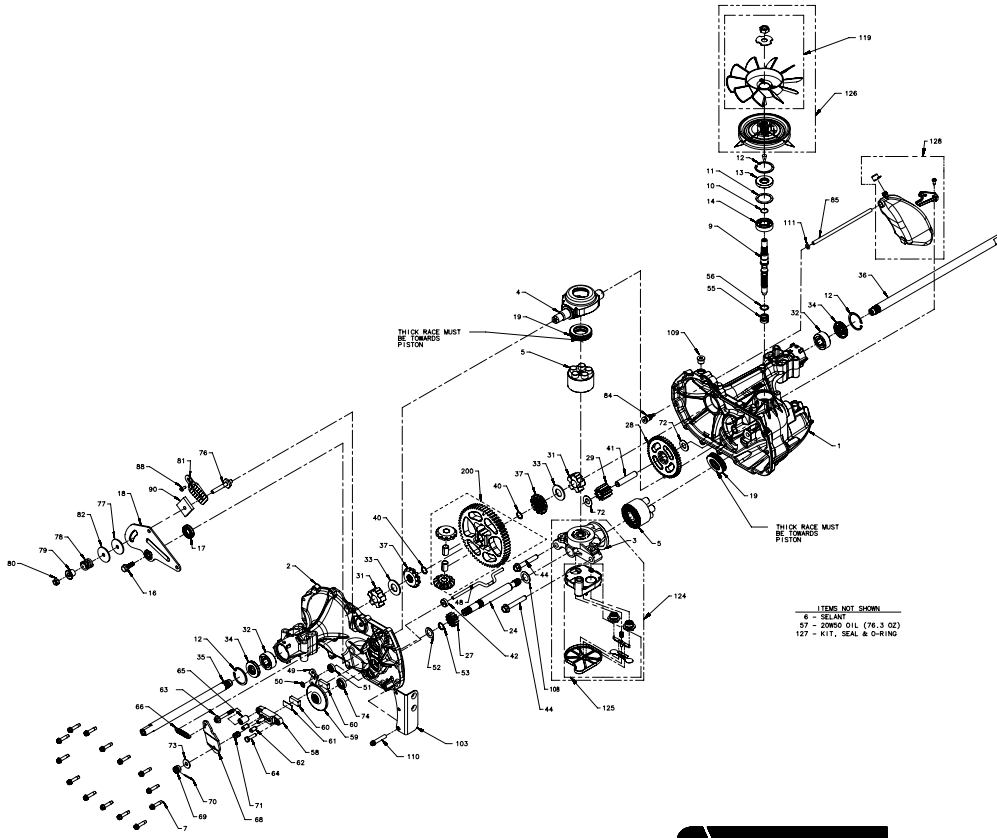


618-0587

# Parts Breakdown

NOTICE - PROPRIETARY INFORMATION: THIS SERVICE SCHEMATIC AND ITS CONTENTS ARE WHOLLY OWNED BY HYDRO-GEAR OF SULLIVAN, IL., AND MAY NOT BE PUBLISHED OR REPRODUCED WITHOUT THE WRITTEN CONSENT OF HYDRO-GEAR.

618-0587  
326-0510



**HYDRO-GEAR**  
P. 1 of 2 70639 P13

## Parts Breakdown

| #  | PART #  | DESCRIPTION                         | QTY     | Note |
|----|---------|-------------------------------------|---------|------|
| 1  | 70467   | KIT, HOUSING, MAIN                  | 1       |      |
|    |         | HOUSING, MAIN                       | 1       |      |
|    |         | BUSHING, .865 X .985 X .790         | 1       |      |
|    |         | PIN, STANDARD HEADLESS              | 2       |      |
| 2  | 70483   | KIT, HOUSING, SIDE                  | 1       |      |
|    |         | HOUSING, SIDE                       | 1       |      |
|    |         | BUSHING, .865 X .985 X .790         | 1       |      |
|    |         | BUSHING, .624 X .719 X .562         | 1       |      |
| 3  | 70477   | KIT, CENTER SECTION                 | 1       |      |
|    |         | CENTER SECTION (5 - PISTON)         | 1       |      |
|    |         | BUSHING, .707 X .788 X .591         | 1       |      |
| 4  | 51048   | TRUNNION, SWASHPLATE                | 1       |      |
| 5  | 70331   | KIT, BLOCK, 10CC CYLINDER           | 2       |      |
|    |         | BLOCK, CYLINDER                     | 1       |      |
|    |         | PISTON                              | 5       |      |
|    |         | SPRING, COMPRESSION                 | 5       |      |
|    |         | WASHER, THRUST                      | 5       |      |
| 6  | 50928   | SEALANT TUBE                        | 10.1 oz |      |
| 7  | 53246   | SCREW 1/4-20 X 1.125 HEX WASHER     | 14      |      |
| 9  | 51062   | SHAFT INPUT                         | 1       |      |
| 10 | 2000022 | RING RET 67 EXT WIRE                | 1       |      |
| 11 | 50951   | WASHER 1.23 X 1.57 X .04            | 1       |      |
| 12 | 50329   | RING RET 156 INT                    | 3       |      |
| 13 | 51161   | SEAL 17 X 40 X 7 LIP                | 1       |      |
| 14 | 50315   | BEARING 17X40X12 BALL OPEN 6203     | 1       |      |
| 16 | 51064   | BOLT 5/16-24 X .94 HF (PATCH)       | 1       |      |
| 17 | 51140   | SEAL 18 X 32 X 7 LIP                | 1       |      |
| 18 | 51204   | ARM, CNTRL                          | 1       |      |
| 19 | 50551   | BEARING 30X52X13 BALL THRUST        | 2       |      |
| 24 | 50966   | SHAFT MOTOR                         | 1       |      |
| 27 | 51130   | GEAR, 13T PINNION                   | 1       |      |
| 28 | 51129   | GEAR, 10T/48T                       | 1       |      |
| 29 | 51043   | GEAR, 10T JACKSHAFT                 | 1       |      |
| 31 | 51088   | BUSHING, SLEEVE (INBOARD)           | 2       |      |
| 32 | 51089   | BUSHING, SLEEVE .752 X 1.571 X .625 | 2       |      |
| 33 | 44875   | WASHER .77 X 1.5 X .10 FLAT         | 2       |      |
| 34 | 51066   | SEAL .750 X 1.577 X .250 LIP        | 2       |      |
| 35 | 51079   | SHAFT .75 X 11.39 DD (RH) AXLE      | 1       |      |
| 37 | 51769   | GEAR, MITER 12T (SPLINED)           | 2       |      |
| 40 | 44871   | RING RET 62 EXT SPIRAL              | 2       |      |
| 41 | 51083   | JACK SHAFT (PIN)                    | 1       |      |
| 42 | 51100   | MAGNET, RING                        | 1       |      |
| 44 | 50016   | SCREW 3/8-24 X 2.5 HF W/PATCH       | 2       |      |
| 48 | 51098   | ROD ACTUATOR BYPASS                 | 1       |      |
| 49 | 51135   | ARM, BYPASS                         | 1       |      |
| 50 | 51116   | RING RET 25 EXT PUSH                | 1       |      |

## Parts Breakdown

## Parts Breakdown

| #   | PART #       | DESCRIPTION                         | QTY      | Note |
|-----|--------------|-------------------------------------|----------|------|
| 51  | 51081        | SEAL .25 X .75 X .25 LIP TC         | 1        |      |
| 52  | 44371        | WASHER .63 X 1.0 X .05 FLAT         | 1        |      |
| 53  | 44145        | RETAINING RING, MOTOR SHAFT         | 1        |      |
| 54  | 51071        | BUSHING, CENTER BLOCK               | 1        |      |
| 55  | 2003014      | SPRING, BLOCK                       | 1        |      |
| 56  | 2003017      | WASHER .59 X .79 X .04 FLAT         | 1        |      |
|     |              | OIL, 20W50                          | 76.3 OZ. |      |
| 58  | 62589        | KIT, BRAKE YOKE                     | 1        |      |
|     |              | YOKE, BRAKE                         | 1        |      |
|     |              | BOLT, SQ.HD. 5/16 - 24 RIBBED       | 1        |      |
| 59  | 51072        | ROTOR, BRAKE                        | 1        |      |
| 60  | 44132        | PUCK, BRAKE                         | 2        |      |
| 61  | 44134        | PLATE, PUCK                         | 1        |      |
| 62  | 44127        | PIN BRAKE ACTUATING                 | 2        |      |
| 63  | 51146        | SCREW .250-20 X 2.0 HFS PATCH       | 1        |      |
| 64  | 44433        | BOLT 1/4-20 X 1 (PATCH)             | 1        |      |
| 65  | 23711        | SPACER .26X.57X.87                  | 1        |      |
| 66  | 70896        | KIT, SPRING                         | 1        |      |
|     |              | SPRING, BRAKE ARM BIAS              | 1        |      |
|     |              | BULLETIN, BRAKE SPRING              | 1        |      |
| 68  | 44094        | ARM, BRAKE                          | 1        |      |
| 69  | 44142        | CASTLE NUT, 5/16-24                 | 1        |      |
| 70  | 44101        | PIN 3/32 X 3/4 COTTER               | 1        |      |
| 71  | 50919        | SPRING COMPRESSION BRAKE ANTI-DRAG  | 1        |      |
| 72  | 50132        | WASHER .51 X 1.10 X .03 FLAT        | 2        |      |
| 73  | 44130        | WASHER .34 X .88 X .06              | 1        |      |
| 74  | 70719        | KIT, SEAL                           | 1        |      |
|     |              | SEAL, LIP .625 X 1.0 X .25          | 1        |      |
|     |              | RING, RET - STAR WASHER             | 1        |      |
|     |              | BULLETIN, SHAFT SEAL                | 1        |      |
| 76  | 50284        | STUD 5/16-24 FRICTION PACK          | 1        |      |
| 77  | 51113        | PUCK .320 X 1.50 X .0975 (FRICTION) | 1        |      |
| 78  | 50277        | SPRING, HELICAL COMP .87 X .87      | 1        |      |
| 79  | 54777        | SPACER, FLANGED                     | 1        |      |
| 80  | 50317        | NUT HEX 5/16-24 UNF NYLON INSERT    | 1        |      |
| 81  | 51226        | WEDGE, FRICTION PACK                | 1        |      |
| 82  | 51114        | WASHER .316 X 1.50 X .1046 (PLATED) | 1        |      |
| 84  | 51143        | FITTING 5/16 SAE, 5/32 TUBE         | 1        |      |
| 85  | 51147        | HOSE EXPANSION TANK 7.56 IN         | 1        |      |
| 88  | 50653        | BOLT 10-32 X 1/2 SELF TAPPING       | 1        |      |
| 90  | 51227        | PUCK INNER WEDGE                    | 1        |      |
| 103 | 51223        | BRACKET, 4.5" TORQUE                | 1        |      |
| 108 | 51069        | WASHER .71 X 1.16 X .04 FLAT        | 1        |      |
| 109 | 9005110-5600 | PLUG 9/16-18 METAL                  | 1        |      |
| 110 | 50868        | SCREW 5/16-18 X 1.5 TH              | 1        |      |
| 111 | 51144        | O-RING -109 .103 X .299             | 1        |      |

## Parts Breakdown

| #   | PART # | DESCRIPTION                              | QTY | Note |
|-----|--------|--|-----|------|
| 119 | 70579  | KIT, FAN-WASHER-NUT                      | 1   |      |
|     |        | NUT, HEX LOCK 1/2 - 20 W/NYLON INSERT    | 1   |      |
|     |        | WASHER, OD SLOTTED, .53 X 1.63 X .06     | 1   |      |
|     |        | FAN, 7.0 IN (10 BLADE)                   | 1   |      |
| 124 | 70759  | KIT, CENTER SECTION, FILTER-BYPASS       | 1   |      |
|     |        | CENTER SECTION (5-PISTON)                | 1   |      |
|     |        | BASE, FILTER W/POPPET                    | 1   |      |
|     |        | CHECK, PLUG ASSEMBLY, .027 BLEED, WASHER | 2   |      |
|     |        | SPRING, BYPASS .50 IN                    | 1   |      |
|     |        | ACTUATOR, BYPASS                         | 1   |      |
|     |        | DEFLECTOR                                | 1   |      |
|     |        | BOTTOM, FILTER                           | 1   |      |
|     |        | BUSHING, .707 X .788 X .591              | 1   |      |
| 125 | 70756  | ASSY, FILTER                             | 1   |      |
|     |        | BOTTOM, FILTER                           | 1   |      |
|     |        | SPRING, BYPASS .50 IN                    | 1   |      |
|     |        | ACTUATOR, BYPASS                         | 1   |      |
|     |        | DEFLECTOR                                | 1   |      |
|     |        | BASE, FILTER W/POPPET                    | 1   |      |
| 126 | 70640  | KIT, FAN/PULLEY                          | 1   |      |
|     |        | NUT, HEX LOCK 1/2 - 20 W/NYLON INSERT    | 1   |      |
|     |        | WASHER, OD SLOTTED, .53 X 1.63 X .06     | 1   |      |
|     |        | FAN, 7 IN 10 BLADE                       | 1   |      |
|     |        | PULLEY, 4.79 IN                          | 1   |      |
| 127 | 70463  | KIT, O-RING & SEAL                       | 1   |      |
|     |        | SEAL, LIP 17 X 40 X 7                    | 1   |      |
|     |        | SEAL, LIP 18 X 32 X 7                    | 1   |      |
|     |        | SEAL, LIP .75 X 1.577 X .250             | 2   |      |
|     |        | SEAL, LIP .250 X .750 X .250 TC          | 1   |      |
|     |        | SEAL, LIP .625 X 1.0 X .25               | 1   |      |
|     |        | O-RING .299 X .505 X .103                | 1   |      |
| 128 | 70503  | KIT, EXPANSION TANK                      | 1   |      |
|     |        | TANK, EXPANSION ASSEMBLY                 | 1   |      |
|     |        | CAP, EXPANSION                           | 1   |      |
|     |        | BOLT, SELF TAPPING 10 - 32 X .5          | 1   |      |
|     |        | BRACKET, EXPANSION TANK                  | 1   |      |
| 200 | 71829  | KIT 60T BULL GEAR DIFF PINS              | 1   |      |
|     |        | GEAR, 60T                                | 1   |      |
|     |        | PIN, 0.5 OD                              | 2   |      |
|     |        | GEAR, MITER 12 T (.050 ID)               | 2   |      |
|     |        | BULLETIN, BULL GEAR                      | 1   |      |