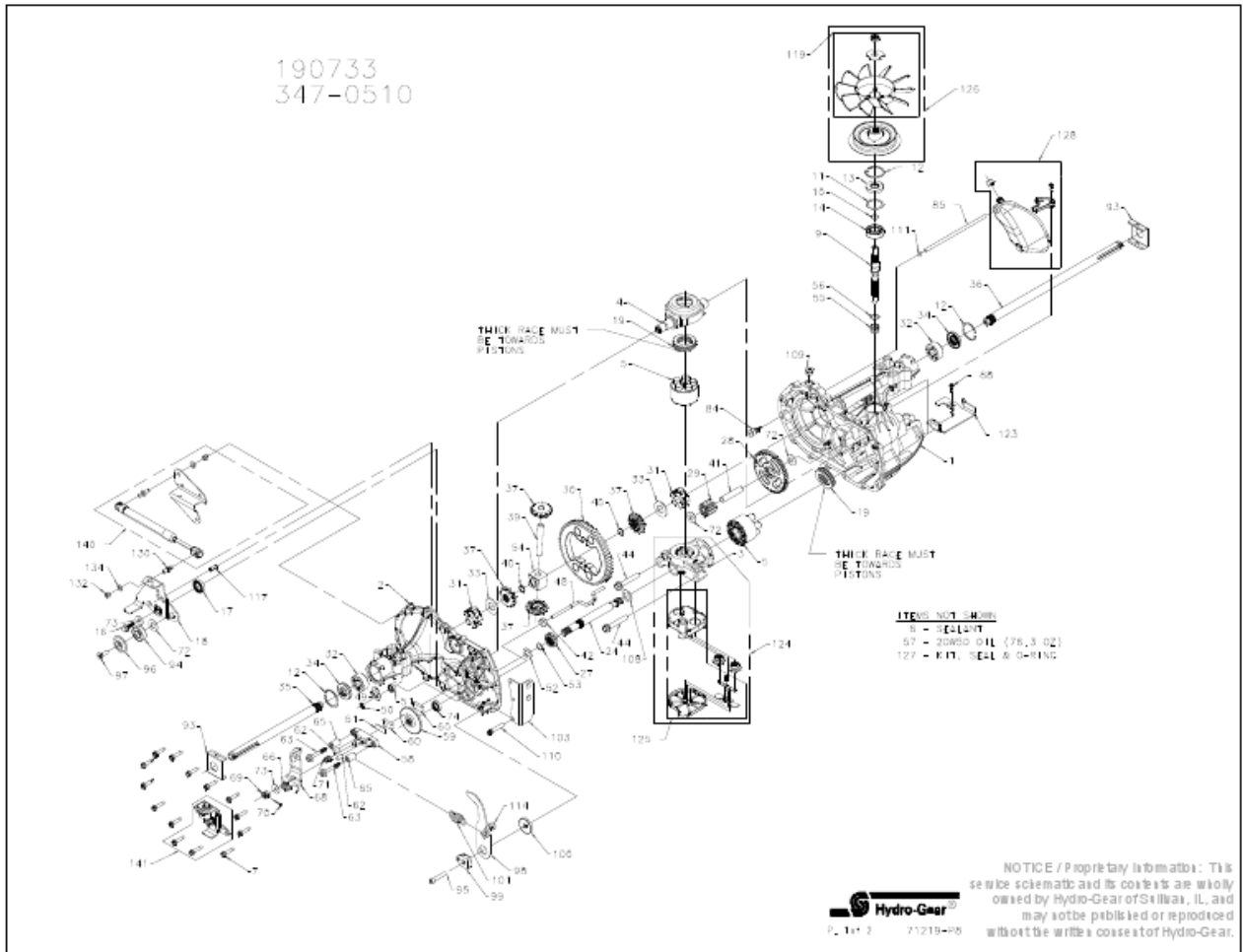


190733

Parts Breakdown



Parts Breakdown

#	PART #	DESCRIPTION	QTY	Note
1	70467	KIT, HOUSING, MAIN	1	
		HDUSING. MAIN	1	
		BUSHING .865 X .985 X .790	1	
		PIN, STANDARD HEADLESS	2	
2	70483	KIT, HOUSING, SIDE	1	
		HOUSING . SIDE	1	
		BUSHING .865 X .985 X .790	1	
		BUSHING .624 X .719 X .562	1	
3	70477	KIT, CENTER SECTION	1	
		CENTER SECTION (5 PISTON)	1	
		BUSHING .707 X .788 X .591	1	
4	51048	TRUNNION, SWASHPLATE	1	
5	70331	KIT, BLOCK, 10CC CYLINDER	2	
		BLOCK, CYLINOER	1	
		PISTON	5	
		SPRING COMPRESSION	5	
		WASHER , THRUST	5	
6	50928	SEALANT TUBE	10.1 OZ	
7	53246	SCREW 1/4-20 X 1.125 HEX WASHER	14	
9	51062	SHAFT INPUT	1	
10	2000022	RING RET 67 EXT WIRE	1	
11	50951	WASHER 1.23 X 1.57 X .04	1	
12	50329	RING RET 156 INT	3	
13	51161	SEAL 17 X 40 X 7 LIP	1	
14	50315	BEARING 17X40X12 BALL OPEN 6203	1	
16	51064	BOLT 5/16-24 X .94 HF (PATCH)	1	
17	51140	SEAL 18 X 32 X 7 LIP	1	
18	51959	ARM, CONTROL	1	
19	50551	BEARING 30X52X13 BALL THRUST	2	
24	50966	SHAFT MOTOR	1	
27	51130	GEAR, 13T PINNION	1	
28	51129	GEAR, 10T/48T	1	
29	51043	GEAR, 10T JACKSHAFT	1	
30	51044	GEAR, 60T BULL	1	
31	51088	BUSHING, SLEEVE (INBOARD)	2	
32	51089	BUSHING, SLEEVE .752 X 1.571 X .625	2	
33	44875	WASHER .77 X 1.5 X .10 FLAT	2	
34	51066	SEAL .750 X 1.577 X .250 LIP	2	
35	51068	SHAFT, AXLE .75 X 11.39 (KEY, R.H.)	1	
36	51067	SHAFT, AXLE .75 X 16.99 (KEY, L.H.)	1	
37	71310	KIT, MITER GEAR	1	
		GEAR MITER 12T (SPLINED)	2	
		GEAR MITER 12T (.50 I D)	2	
		BULLETIN MITER GEAR	1	
39	50146	SHAFT DIFF	1	
40	44871	RING RET 62 EXT SPIRAL	2	

Parts Breakdown

#	PART #	DESCRIPTION	QTY	Note
41	51083	JACK SHAFT (PIN)	1	
42	51100	MAGNET, RING	1	
44	50016	SCREW 3/8-24 X 2.5 HF W/PATCH	2	
48	51098	ROD ACTUATOR BYPASS	1	
49	52223	ARM, BYPASS	1	
50	51116	RING RET 25 EXT PUSH	1	
51	51081	SEAL .25 X .75 X .25 LIP TC	1	
52	44371	WASHER .63 X 1.0 X .05 FLAT	1	
53	44145	RETAINING RING, MOTOR SHAFT	1	
54	51071	BUSHING, CENTER BLOCK	1	
55	2003014	SPRING, BLOCK	1	
56	2003017	WASHER .59 X .79 X .04 FLAT	1	
57		OIL, 20W50	76.3 OZ	
58	62589	KIT, BRAKE YOKE	1	
		YOKE, BRAKE	1	
		BOLT SQ.HD. 5/16-24 RIBBED	1	
59	51072	ROTOR, BRAKE	1	
60	44132	PUCK, BRAKE	2	
61	44134	PLATE, PUCK	1	
62	44127	PIN BRAKE ACTUATING	2	
63	51146	SCREW .250-20 X 2.0 HFS PATCH	2	
65	23711	SPACER .26X.57X.87	2	
66	51890	SPRING EXT .56 X 1.67	1	
68	51445	ARM, BRAKE	1	
69	44142	CASTLE NUT, 5/16-24	1	
70	44101	PIN 3/32 X 3/4 COTTER	1	
71	50919	SPRING COMPRESSION BRAKE ANTI-DRAG	1	
72	50132	WASHER .51 X 1.10 X .03 FLAT	3	
73	44130	WASHER .34 X .88 X .06	2	
74	70719	KIT, SEAL	1	
		SEAL, LIP .625 X 1.0 X .25	1	
		RING, RET - STAR WASHER	1	
		BULLETIN. SHAFT SEAL	1	
84	51143	FITTING 5/16 SAE, 5/32 TUBE	1	
85	51147	HOSE EXPANSION TANK 7.56 IN	1	
88	50653	BOLT 10-32 X 1/2 SELF TAPPING	1	
93	51118	SPRING CLIP-HOUSING THRUST	2	
94	44147	BEARING .62X1.38X.44 BALL	1	
95	50837	SCREW 5/16-24 X 1.5 SHC	1	
96	51200	SPACER, LOCATING	1	
97	50870	SCREW 5/16-18 X 1 SHC W/PATCH	1	
98	51356	ARM, 5.25 X 2.5 RTN	1	
99	51097	PUCK, ADJUSTING	1	
100	52493	WASHER, .3165 ID X 1.50 OD	1	
101	51131	SPRING EXT .82 X 1.96	1	
103	51223	BRACKET, 4.5" TORQUE	1	

Parts Breakdown

#	PART #	DESCRIPTION	QTY	Note
108	51069	WASHER .71 X 1.16 X .04 FLAT	1	
109	9005110-5600	PLUG 9/16-18 METAL	1	
110	50868	SCREW 5/16-18 X 1.5 TH	1	
111	51144	O-RING -109 .103 X .299	1	
114	51184	SPRING GUIDE	1	
117	51124	PIN SPRING 5/16 X .75	1	
119	70579	KIT, FAN-WASHER-NUT	1	
		NUT, HEX LOCK 1/2-20 W/ NYLON INSERT	1	
		WASHER, OD SLOTTED, .53 X 1 .63 X .06	1	
		FAN 7.0 IN (10 BLADE)	1	
123	51229	BRACKET, 3.75 X 4.375 ZINC BELT KEEPER	1	
124	70758	KIT, CENTER SECTION, FILTER-BYPASS	1	
		CENTER SECTION (5-PISTON)	1	
		BASE FILTER W/ POPPET	1	
		CHECK PLUG ASSEMBLY . NO BLEED. WASHER	1	
		CHECK PLUG ASSEMBLY, . 027 BLEED, WASHER	1	
		SPRING BYPASS .50 IN	1	
		ACTUATOR, BYPASS	1	
		DEFLECTOR	1	
		BOTTOM, FILTER	1	
		BUSHING . 707 X .788 X . 591	1	
125	70756	ASSY, FILTER	1	
		BASE, FILTER W/ POPPET	1	
		SPRING, BYPASS . 50 IN	1	
		ACTUATOR, BYPASS	1	
		DEFLECTOR	1	
		BOTTOM , FILTER	1	
126	70998	KIT, FAN-PULLEY	1	
		NUT, HEX LOCK 1/2-20 W/NYLON INSERT	1	
		WASHER, OD SLOTTED, .53 X 1 . 63 X . 06	1	
		FAN 7.0 IN (10 BLADE)	1	
		PULLEY 3. 86 IN FLANGED	1	
127	70463	KIT, O-RING & SEAL	1	
		SEAL, LIP 17 X 40 X 7	1	
		SEAL, LIP 18 X 32 X 7	1	
		SEAL, LIP . 750 X 1.577 X . 250	2	
		SEAL LIP . 250 X . 750 X . 250 TC	1	
		SEAL LIP .625 X 1.0 X . 25	1	
		O-RING . 299 X . 505 X . 103	1	
128	70503	KIT, EXPANSION TANK	1	
		TANK, EXPANSION ASSEMBLY	1	
		CAP, EXPANSION	1	
		BOLT, SELF TAPPING 10-32 X . 5	1	
		BRACKET, EXPANSION TANK	1	
130	51426	STUD THREADED BALL	1	
132	43083	NUT 5/16-18 HEX	1	

Parts Breakdown

#	PART #	DESCRIPTION	QTY	Note
134	51430	WASHER .318 LOCK	1	
140	70816	KIT, DAMPER	1	
		STUD, THREADED BALL	1	
		BRACKET, CRUISE/ DAMPER	1	
		NUT, HEX 5/16-18	1	
		DAMPER	1	
		WASHER 5/16 LOCK	1	
		INSTRUCTIONS, REPLACEMENT DAMPER	1	
141	71222	KIT, RCS SWITCH	1	
		BRACKET, SWITCH BASE	1	
		BRACKET, SWITCH TOP	1	
		NUT, 5/16-18 BREAKAWAY	1	
		SWITCH-SNAP MOUNT	1	
		WASHER 5/16 VIBRATION	1	
		SCREW, HEX FLANGE 1/4-20 X 1 . 25	2	
		REVERSE SWITCH PROCEDURE	1	