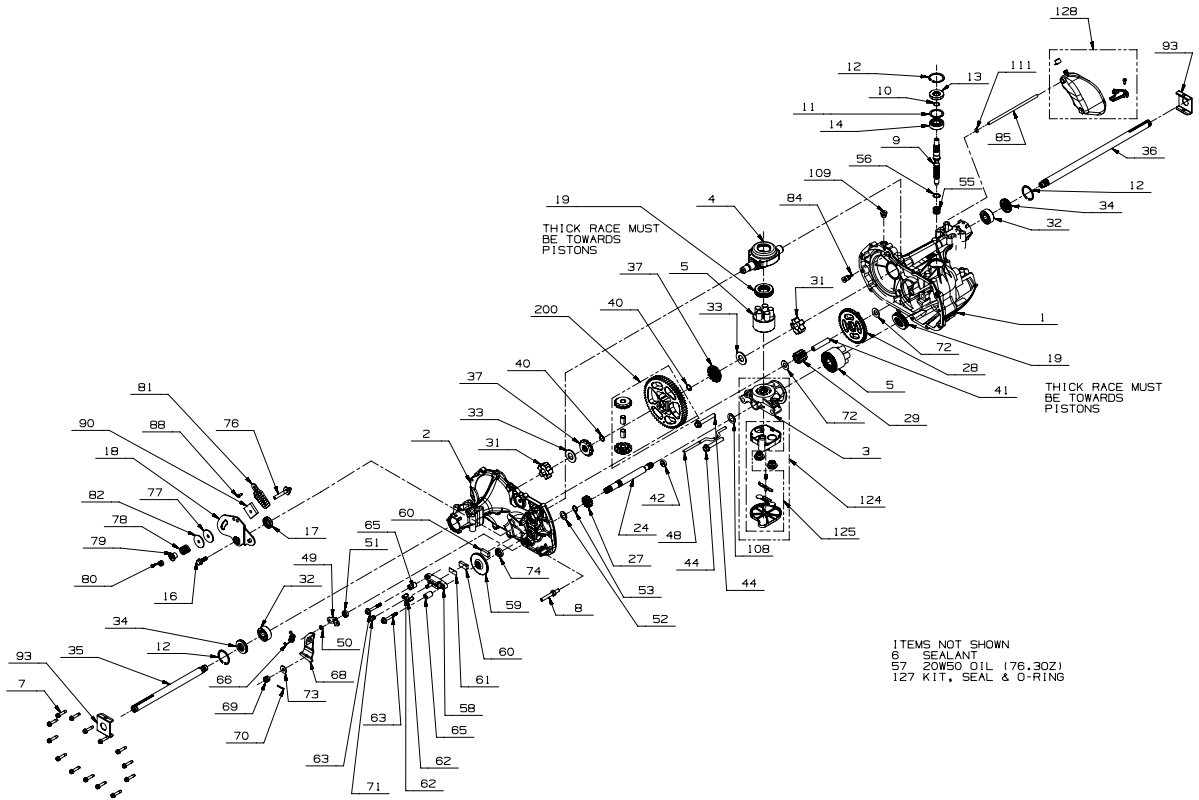


1725620

Parts Breakdown

NOTICE - PROPRIETARY INFORMATION: THIS SERVICE SCHEMATIC AND ITS CONTENTS ARE WHOLLY OWNED BY HYDRO-GEAR OF SULLIVAN, IL., AND MAY NOT BE PUBLISHED OR REPRODUCED WITHOUT THE WRITTEN CONSENT OF HYDRO-GEAR.

1725620
340-0510



P. 1 of 2 71064 P10

Parts Breakdown

#	PART #	DESCRIPTION	QTY	Note
1	71625	ASSEMBLY, MAIN HOUSING	1	
2	71626	ASSEMBLY, SIDE HOUSING	1	
3	70477	KIT, CENTER SECTION	1	
4	51048	TRUNNION, SWASHPLATE	1	
5	70331	KIT, BLOCK, 10CC CYLINDER	2	
6	50928	SEALANT TUBE	1	
7	53246	SCREW 1/4-20 X 1.125 HEX WASHER	14	
8	51061	STUD 5/16-18 THREAD STRAP	1	
9	51062	SHAFT INPUT	1	
10	2000022	RING RET 67 EXT WIRE	1	
11	50951	WASHER 1.23 X 1.57 X .04	1	
12	50329	RING RET 156 INT	3	
13	51161	SEAL 17 X 40 X 7 LIP	1	
14	50315	BEARING 17X40X12 BALL OPEN 6203	1	
16	51064	BOLT 5/16-24 X .94 HF (PATCH)	1	
17	51140	SEAL 18 X 32 X 7 LIP	1	
18	51720	ARM, CONTROL	1	
19	50551	BEARING 30X52X13 BALL THRUST	2	
24	50966	SHAFT MOTOR	1	
27	51130	GEAR, 13T PINNION	1	
28	51129	GEAR, 10T/48T	1	
29	51043	GEAR, 10T JACKSHAFT	1	
31	51088	BUSHING, SLEEVE (INBOARD)	2	
32	51089	BUSHING, SLEEVE .752 X 1.571 X .625	2	
33	44875	WASHER .77 X 1.5 X .10 FLAT	2	
34	51066	SEAL .750 X 1.577 X .250 LIP	2	
35	51068	SHAFT, AXLE .75 X 11.39 (KEY, R.H.)	1	
36	51067	SHAFT, AXLE .75 X 16.99 (KEY, L.H.)	1	
37	51769	GEAR, MITER 12T (SPLINED)	2	
40	44871	RING RET 62 EXT SPIRAL	2	
41	51083	JACK SHAFT (PIN)	1	
42	51100	MAGNET, RING	1	
44	50016	SCREW 3/8-24 X 2.5 HF W/PATCH	2	
48	51098	ROD ACTUATOR BYPASS	1	
49	51135	ARM, BYPASS	1	
50	51116	RING RET 25 EXT PUSH	1	
51	51081	SEAL .25 X .75 X .25 LIP TC	1	
52	44371	WASHER .63 X 1.0 X .05 FLAT	1	
53	44145	RETAINING RING, MOTOR SHAFT	1	
55	2003014	SPRING, BLOCK	1	
56	2003017	WASHER .59 X .79 X .04 FLAT	1	
58	62589	KIT, BRAKE YOKE	1	
59	51072	ROTOR, BRAKE	1	
60	44132	PUCK, BRAKE	2	
61	44134	PLATE, PUCK	1	
62	44127	PIN BRAKE ACTUATING	2	

Parts Breakdown

Parts Breakdown

#	PART #	DESCRIPTION	QTY	Note
63	51146	SCREW .250-20 X 2.0 HFS PATCH	2	
65	23711	SPACER .26X.57X.87	2	
66	51890	SPRING EXT .56 X 1.67	1	
68	51445	ARM, BRAKE	1	
69	44142	CASTLE NUT, 5/16-24	1	
70	44101	PIN 3/32 X 3/4 COTTER	1	
71	50919	SPRING COMPRESSION BRAKE ANTI-DRAG	1	
72	50132	WASHER .51 X 1.10 X .03 FLAT	2	
73	44130	WASHER .34 X .88 X .06	1	
74	70719	KIT, SEAL	1	
76	50284	STUD 5/16-24 FRICTION PACK	1	
77	51113	PUCK .320 X 1.50 X .0975 (FRICTION)	1	
78	50277	SPRING, HELICAL COMP .87 X .87	1	
79	54777	SPACER, FLANGED	1	
80	50317	NUT HEX 5/16-24 UNF NYLON INSERT	1	
81	51226	WEDGE, FRICTION PACK	1	
82	51114	WASHER .316 X 1.50 X .1046 (PLATED)	1	
84	51143	FITTING 5/16 SAE, 5/32 TUBE	1	
85	51147	HOSE EXPANSION TANK 7.56 IN	1	
88	50653	BOLT 10-32 X 1/2 SELF TAPPING	1	
90	51227	PUCK INNER WEDGE	1	
93	51118	SPRING CLIP-HOUSING THRUST	2	
108	51069	WASHER .71 X 1.16 X .04 FLAT	1	
109	9005110-5600	PLUG 9/16-18 METAL	1	
111	51144	O-RING -109 .103 X .299	1	
124	71119	KIT, CENTER SECTION & FILTER	1	
125	70756	ASSY, FILTER	1	
127	70463	KIT, O-RING & SEAL	1	
128	70503	KIT, EXPANSION TANK	1	
200	71829	KIT 60T BULL GEAR DIFF PINS	1	