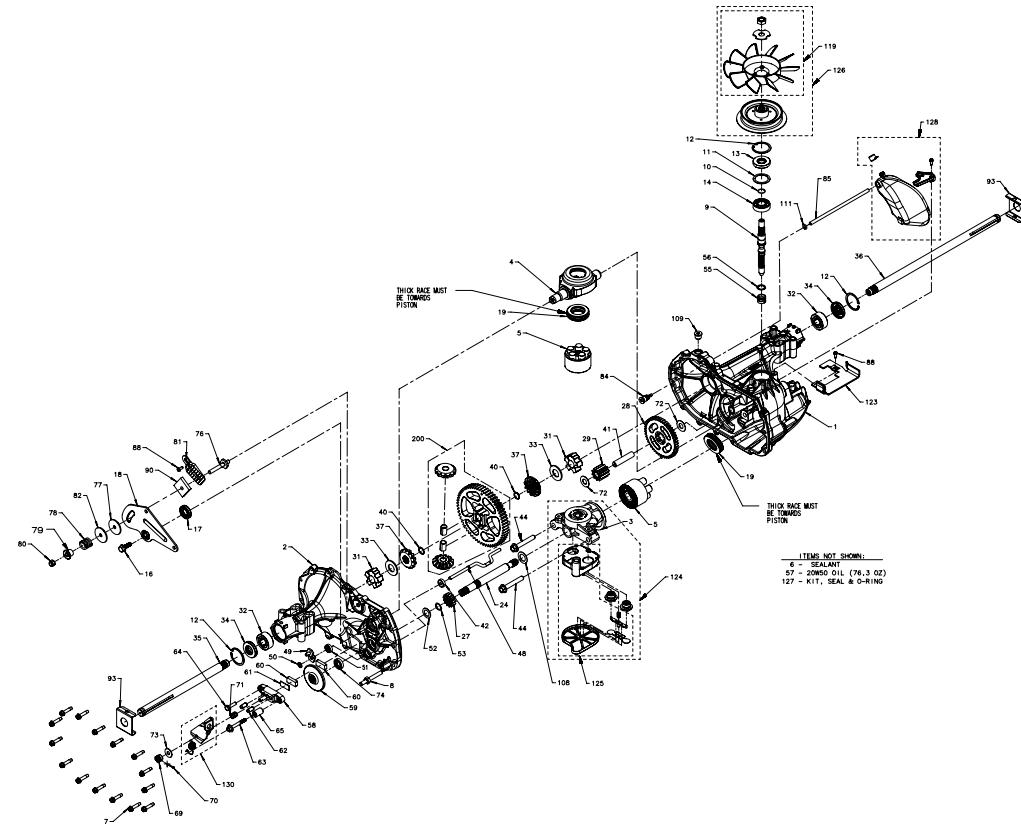


166768

# Parts Breakdown

NOTICE - PROPRIETARY INFORMATION: THIS SERVICE SCHEMATIC AND ITS CONTENTS ARE WHOLLY OWNED BY HYDRO-GEAR OF SULLIVAN, IL., AND MAY NOT BE PUBLISHED OR REPRODUCED WITHOUT THE WRITTEN CONSENT OF HYDRO-GEAR.

166768  
314-0510



**HYDRO-GEAR**  
P. 1 of 2 70485 P18

## Parts Breakdown

#	PART #	DESCRIPTION	QTY	Note
1	70467	KIT, HOUSING, MAIN	1	
		HOUSING,MAIN	1	
		BUSHING, .865 X .985 X .790	1	
		PIN, HEADLESS STANDARD	2	
2	70483	KIT, HOUSING, SIDE	1	
		HOUSING,SIDE	1	
		BUSHING, .865 X .985 X .790	1	
		BUSHING, .624 X .719 X .562	1	
3	70477	KIT, CENTER SECTION	1	
		CENTER SECTION(5 PISTON)	1	
		BUSHING, .707 X .788 X .591	1	
4	51048	TRUNNION, SWASHPLATE	1	
5	70331	KIT, BLOCK, 10CC CYLINDER	2	
		BLOCK, CYLINDER	1	
		PISTON	5	
		SPRING, COMPRESSION	5	
		WASHER, THRUST	5	
6	50928	SEALANT TUBE	10.1 OZ	
7	53246	SCREW 1/4-20 X 1.125 HEX WASHER	14	
8	51061	STUD 5/16-18 THREAD STRAP	1	
9	51062	SHAFT INPUT	1	
10	2000022	RING RET 67 EXT WIRE	1	
11	50951	WASHER 1.23 X 1.57 X .04	1	
12	50329	RING RET 156 INT	3	
13	51161	SEAL 17 X 40 X 7 LIP	1	
14	50315	BEARING 17X40X12 BALL OPEN 6203	1	
16	51064	BOLT 5/16-24 X .94 HF (PATCH)	1	
17	51140	SEAL 18 X 32 X 7 LIP	1	
18	51204	ARM, CNTRL	1	
19	50551	BEARING 30X52X13 BALL THRUST	2	
24	50966	SHAFT MOTOR	1	
27	51130	GEAR, 13T PINNION	1	
28	51129	GEAR, 10T/48T	1	
29	51043	GEAR, 10T JACKSHAFT	1	
31	51088	BUSHING, SLEEVE (INBOARD)	2	
32	51089	BUSHING, SLEEVE .752 X 1.571 X .625	2	
33	44875	WASHER .77 X 1.5 X .10 FLAT	2	
34	51066	SEAL .750 X 1.577 X .250 LIP	2	
35	53507	SHAFT .75 X 11.39 (RH) AXLE KEY	1	
36	53506	SHAFT .75 X 16.99 (LH) AXLE KEY	1	
37	51769	GEAR, MITER 12T (SPLINED)	2	
40	44871	RING RET 62 EXT SPIRAL	2	
41	51083	JACK SHAFT (PIN)	1	
42	51100	MAGNET, RING	1	
44	50016	SCREW 3/8-24 X 2.5 HF W/PATCH	2	
48	51098	ROD ACTUATOR BYPASS	1	

## Parts Breakdown

#	PART #	DESCRIPTION	QTY	Note
49	52223	ARM, BYPASS	1	
50	51116	RING RET 25 EXT PUSH	1	
51	51081	SEAL .25 X .75 X .25 LIP TC	1	
52	44371	WASHER .63 X 1.0 X .05 FLAT	1	
53	44145	RETAINING RING, MOTOR SHAFT	1	
54	51071	BUSHING, CENTER BLOCK	1	
55	2003014	SPRING, BLOCK	1	
56	2003017	WASHER .59 X .79 X .04 FLAT	1	
		OIL, 20W50	76.3 OZ	
58	62589	KIT, BRAKE YOKE	1	
		YOKE. BRAKE	1	
		BOLT, SQ HD 5/16 - 24 RIBBED	1	
59	51072	ROTOR, BRAKE	1	
60	44132	PUCK, BRAKE	2	
61	44134	PLATE, PUCK	1	
62	44127	PIN BRAKE ACTUATING	2	
63	51146	SCREW .250-20 X 2.0 HFS PATCH	1	
64	44433	BOLT 1/4-20 X 1 (PATCH)	1	
65	23711	SPACER .26X.57X.87	1	
69	44142	CASTLE NUT, 5/16-24	1	
70	44101	PIN 3/32 X 3/4 COTTER	1	
71	50919	SPRING COMPRESSION BRAKE ANTI-DRAG	1	
72	50132	WASHER .51 X 1.10 X .03 FLAT	2	
73	44130	WASHER .34 X .88 X .06	1	
74	70719	KIT, SEAL	1	
		SEAL, LIP .625 X 1.0 X .25	1	
		RING, RETAINING - STAR WASHER	1	
		BULLETIN, SHAFT SEAL	1	
76	50284	STUD 5/16-24 FRICTION PACK	1	
77	51113	PUCK .320 X 1.50 X .0975 (FRICTION)	1	
78	50277	SPRING, HELICAL COMP .87 X .87	1	
79	54777	SPACER, FLANGED	1	
80	50317	NUT HEX 5/16-24 UNF NYLON INSERT	1	
81	51226	WEDGE, FRICTION PACK	1	
82	51114	WASHER .316 X 1.50 X .1046 (PLATED)	1	
84	51143	FITTING 5/16 SAE, 5/32 TUBE	1	
85	51147	HOSE EXPANSION TANK 7.56 IN	1	
88	50653	BOLT 10-32 X 1/2 SELF TAPPING	2	
90	51227	PUCK INNER WEDGE	1	
93	51118	SPRING CLIP-HOUSING THRUST	2	
108	51069	WASHER .71 X 1.16 X .04 FLAT	1	
109	9005110-5600	PLUG 9/16-18 METAL	1	
111	51144	O-RING -109 .103 X .299	1	
119	70579	KIT, FAN-WASHER-NUT	1	
		NUT, HEX LOCK 1/2 - 20	1	
		WASHER, OD SLOTTED, .53 X 1.63 X .06	1	

# Parts Breakdown

#	PART #	DESCRIPTION	QTY	Note
		FAN, 7. 0 IN (10 BLADE)	1	
123	51229	BRACKET, 3.75 X 4.375 ZINC BELT KEEPER	1	
124	70758	KIT, CENTER SECTION, FILTER-BYPASS	1	
		CENTER SECTION (5 PISTON)	1	
		BASE, FILTER W/ POPPET	1	
		CHECK PLUG ASSEMBLY, 0.27 BLEED, WASHER	1	
		CHECK PLUG ASSEMBLY, NO BLEED, WASHER	1	
		SPRING, BYPASS .50 IN	1	
		ACTUATOR, BYPASS	1	
		DEFLECTOR	1	
		BOTTOM. FILTER	1	
		BUSHING, .707 X .788 X .591	1	
125	70756	ASSY, FILTER	1	
		BOTTOM, FILTER	1	
		SPRING, BYPASS .50 IN	1	
		ACTUATOR, BYPASS	1	
		DEFLECTOR	1	
		BASE, FILTER W/ POPPET	1	
126	70998	KIT, FAN-PULLEY	1	
		NUT, HEX LOCK 1/2 - 20	1	
		WASHER, OD SLOTTED, .53 X 1.63 X .06	1	
		PULLEY. 3. 86 IN FLANGED	1	
127	70463	KIT, O-RING & SEAL	1	
		SEAL, LIP 17 X 40 X 7	1	
		SEAL, LIP 18 X 32 X 7	1	
		SEAL, LIP .750 X 1.577 X .250	2	
		SEAL, LIP .250 X .750 X .250 TC	1	
		SEAL, LIP .625 X 1.0 X .25	1	
		O-RING, .299 X . 505 X . 103	1	
128	70503	KIT, EXPANSION TANK	1	
		TANK, EXPANSION ASSEMBLY	1	
		CAP, EXPANSION	1	
		BOLT, SELF TAPPING 10 - 32 X . 5	1	
		BRACKET, EXPANSION TANK	1	
130	70893	KIT, BRAKE ARM AND SPRING	1	
		ARM, BRAKE	1	
		SPRING, BRAKE ARM BIAS	1	
		INSTRUCTION SHEET	1	
200	71829	KIT 60T BULL GEAR DIFF PINS	1	
		GEAR, 60T	1	
		GEAR, 12T MITER	2	
		PINS, 0. 5 OD	2	
		BULLETIN, BULL GEAR	1	