



sodastream®

sodastream **AQUA FIZZ™**

SPARKLING WATER MAKER

REGISTER NOW!
AND UPGRADE
YOUR SODASTREAM
EXPERIENCE

Scan or go to
sodastream.com/regCC



WE'RE HERE FOR ALL YOUR BUBBLY QUESTIONS:
CONTACT DETAILS ON **PAGE 21**

SAY GOODBYE to single use plastic bottles



AND HELLO to a perfect carbonation experience



**Patented Quick
Connect system**



**Dishwasher safe
bottle**



Auto lift metal flask

CONTENTS

ALL YOU NEED FOR A FRESH START

GET TO KNOW YOUR SODASTREAM AQUA FIZZ™	5
--	---

HOW TO'S

CO ₂ CYLINDER QUICK CONNECT	6
GLASS CARAFE INSERT	8
FIZZING - THE MAGIC MOMENT	10
CLEANING AND MAINTENANCE	12

USER INSTRUCTIONS

USER LICENSE	15
SETUP	16
CARE	18
FOR YOUR SAFETY	18
LIMITED WARRANTY	19-20



For your safety, please read the set up and safety instructions on pages 16 and 18-19 before using the Sparkling Water Maker. Save these instructions and provide them to any subsequent users.

For more details and information regarding our sparkling water makers, including how to use and troubleshooting guide, please go to support at [support at sodastream.com](https://support.sodastream.com)

ALL YOU NEED FOR A FRESH START



sodastream
AQUA FIZZ™
SPARKLING WATER
MAKER



sodastream
**0,7 L* GLASS
CARBONATING
CARAFE**

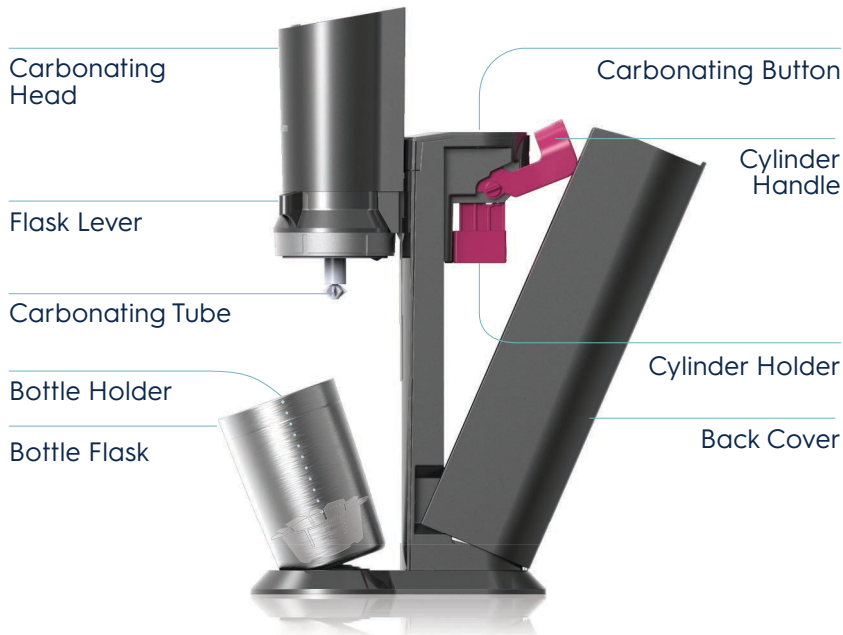


sodastream
**QUICK CONNECT
CO₂-CYLINDER****

*Fill line 0,6L /25 FL OZ

**60L SODASTREAM CO₂ Cylinder (under license) makes up to 60L of sparkling water depending on the level of carbonation and type of sparkling water maker.

GET TO KNOW YOUR SODASTREAM AQUA FIZZ™



COMPATIBLE WITH THE FOLLOWING ONLY :

7

Sodastream®
Quick Connect
CO₂ Cylinder



8


Sodastream®
Glass carbonating
carafe*



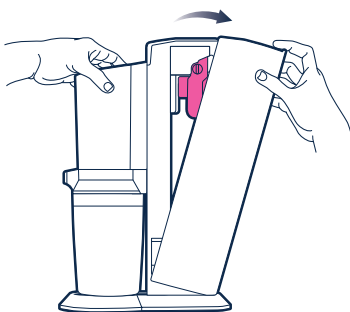
*Check for compatibility on the Bottle pack.

QUICK CONNECT CO₂- CYLINDER

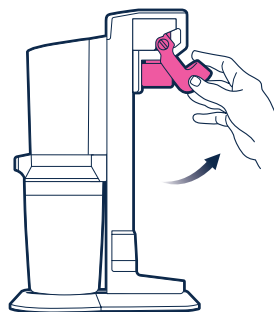


 **PREFER
A HOW-TO VIDEO**
Simply scan and
watch

1 Remove the seal
and **pull off the cap.**



2 Pull open the back
cover.

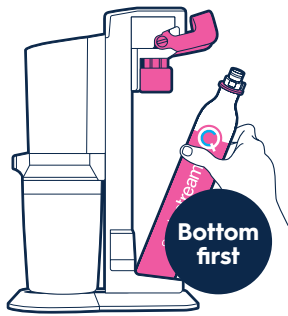


3 Raise the cylinder
handle.

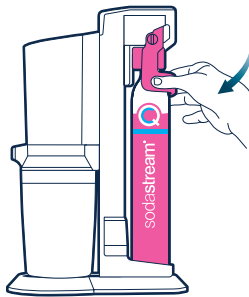


Please carefully read the full SET UP instruction and safety warnings on p.16 and 18-19

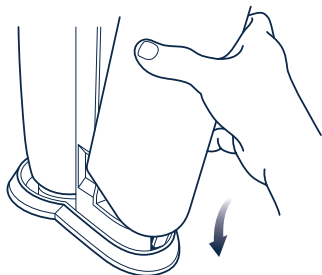
*Make sure the carbonation bottle is not installed in the sparkling water maker before inserting the cylinder



4 Insert the cylinder*, bottom first.

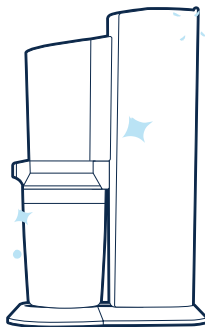


5 Lower the handle for a quick connect.



6 Return the back cover.

EXCELLENT!



Move on to the next step

STUFF TO KNOW



Remember - your cylinder is reusable, when it runs out of CO₂, simply bring it back and get it exchanged!

PAY ONLY FOR THE CO₂ REFILL

Get an extra cylinder so you never run out of bubbles!



Make sure to exchange the right CO₂ cylinder for your sparkling water maker



✓
Compatible
with your
SodaStream
AQUA FIZZ™

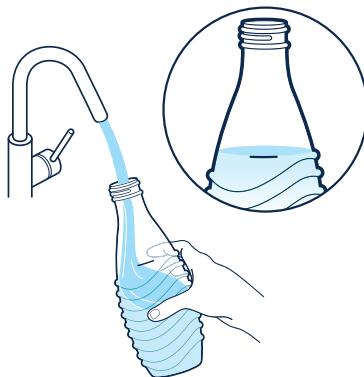


✗
Not
compatible

GLASS CARAFE INSERT

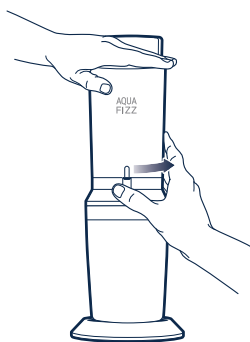


**PREFER
A HOW-TO
VIDEO?**
Simply scan:

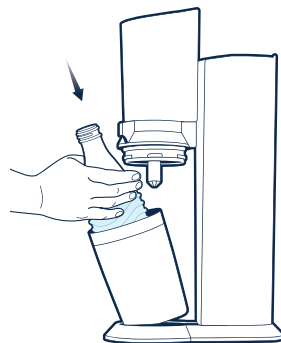


1 Fill the glass carbonating carafe with cold water **up to the fill line.**

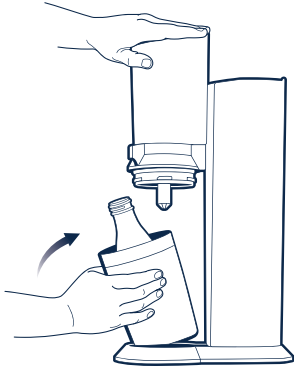
! Always fizz water before adding any flavor



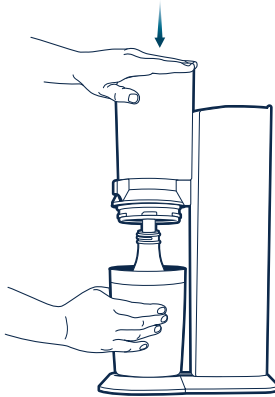
2 To unlock turn the lever to the right and the carbonating head will lift automatically.



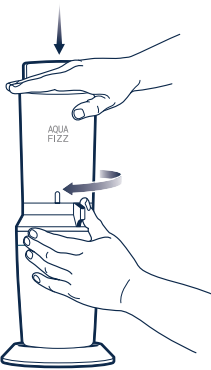
3 Insert the glass carbonating carafe into the carbonating flask.



4 Return the carbonating flask to the upright position.

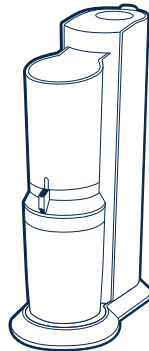


5 Push the carbonating head down and hold.



6 Turn the lever to the left until it reaches the locked position mark.

ALMOST DONE!



Now the last bubbly step

STUFF TO KNOW



The SodaStream AQUA FIZZ™ Glass carbonating carafe is dishwasher safe.



DID YOU KNOW?
1 sodastream can save up to thousands of single use plastic bottles.



FIZZING

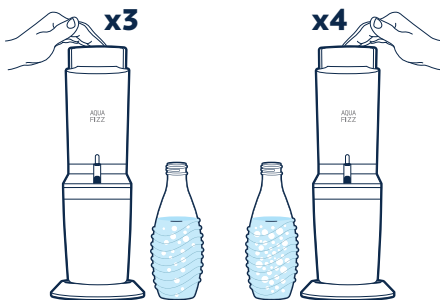
THE MAGIC
MOMENT!



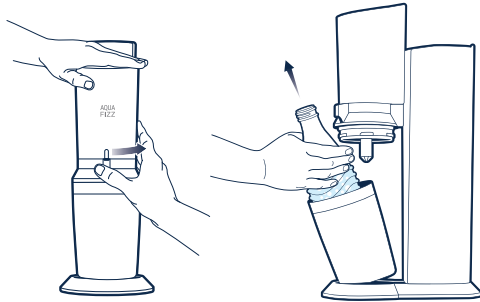
**PREFER
A HOW-TO
VIDEO?**
Simply scan:



- 1** **FIRMLY PUSH** the carbonating button all the way down, **HOLD** for **1 SECOND**, and **RELEASE**.



- 2** Repeat as desired:
3 times for standard fizz
4 times for strong fizz.



3 To unlock, turn the lever to the right and the carbonating head will lift automatically.

TADA!



REGISTER NOW
for an extra
2 years
warranty



ALL DONE!
Enjoy your fab fizzy drink!

.....
Having bubble trouble?
1-800-763-2258

STUFF TO KNOW



PRO TIP:

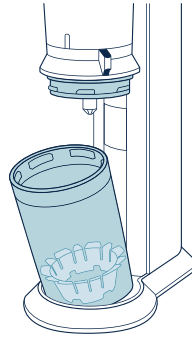
Cold water fizzes better. Keep an extra bottle in the fridge, so you always have one ready to sparkle!



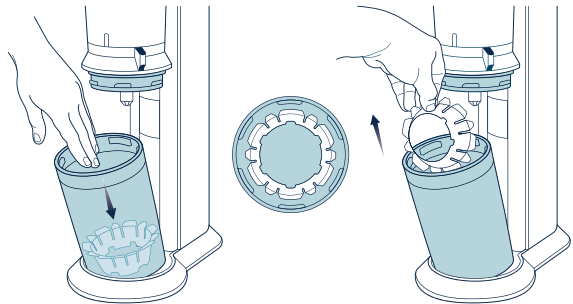
Want some flavor with your fizz?
Try our range of flavors at:
SODASTREAM.COM



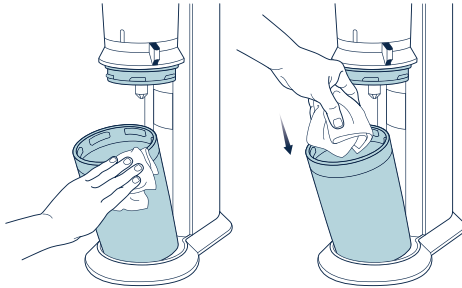
CLEANING & MAINTENANCE



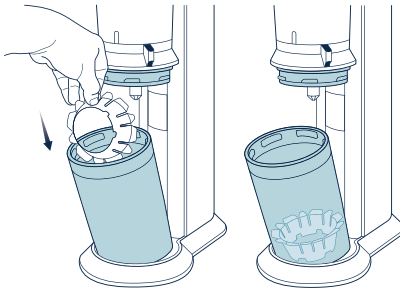
1 To clean the flask, open and tilt towards you.



2 Squeeze to pull out the bottle holder.



3 Use a cleaning cloth to wipe the inside and out.



4 Squeeze and return the bottle holder.

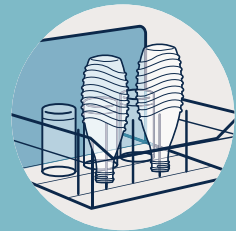
STUFF TO KNOW



Never use abrasive cleaners or sharp tools to clean your SodaStream AQUA FIZZ™ Sparkling Water Maker. If needed, use a mild liquid dish soap and a damp cloth to gently clean.



To clean your dishwasher safe bottle, place upside-down on the dishwasher rack, on top of **ONE PIN ONLY**





AQUA
FIZZ

USER LICENSE

FOR ONE SODASTREAM QUICK CONNECT CYLINDER

NOT FOR SALE

PROPERTY OF SODASTREAM INDUSTRIES LTD. OR ITS AFFILIATES

PROVIDED UNDER LICENSE AND PATENT PENDING

This is a legally binding document between SodaStream Industries Ltd. or its affiliates ("SodaStream") and the consumer regarding the right to use a SodaStream CO₂ Quick Connect Cylinder (the "Cylinder").

The Cylinder is proprietary to SodaStream, patent pending and protected by other intellectual property rights. Further, to protect users' safety and health, various directives and regulations govern and regulate the use, refilling, maintenance, retesting and repair of the Cylinder. SodaStream possesses the legally required knowledge and expertise to be responsible for strict legal compliance that can only be guaranteed if the Cylinder is maintained, examined, retested and refilled by it. Thus, the Cylinder remains the property of SodaStream and is provided under License.

1. When empty, please return the Cylinder to either SodaStream or an authorized SodaStream distributor in exchange for a full Cylinder, for the price of the gas refill only. This License will continue to bind the use of each subsequent Cylinder.
2. Refilling an empty Cylinder by third parties may infringe SodaStream's intellectual property rights, including patents and other proprietary rights, may be risky and may violate certain laws. SodaStream only warrants the safety of Cylinders refilled by it, bearing a SodaStream tamper proof valve seal. You may not remove or change any proprietary notice appearing on or accompanying the Cylinders.
3. If you return the Cylinder to SodaStream or an authorized SodaStream distributor, without exchanging it for a full one, you will be entitled to a return fee of 2\$ or local equivalent.
4. The Cylinder, together with this User License, may be transferred to a third party provided the third party agrees to be bound by the conditions and ownership rights expressed herein. Possession of this User License proves the right of its holder to use one Cylinder under the terms herein.

For questions, please contact SodaStream International BV, Dongenseweg 200, 5047 SH Tilburg, The Netherlands

Please keep in a safe place
www.sodastream.com

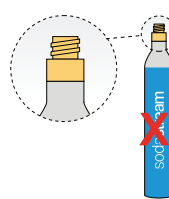
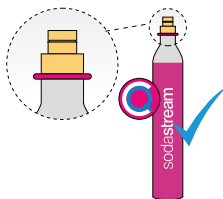
SET UP

SODASTREAM® CO₂ QUICK CONNECT CYLINDER

COMPATIBLE SODASTREAM®
CO₂ QUICK CONNECT CYLINDER

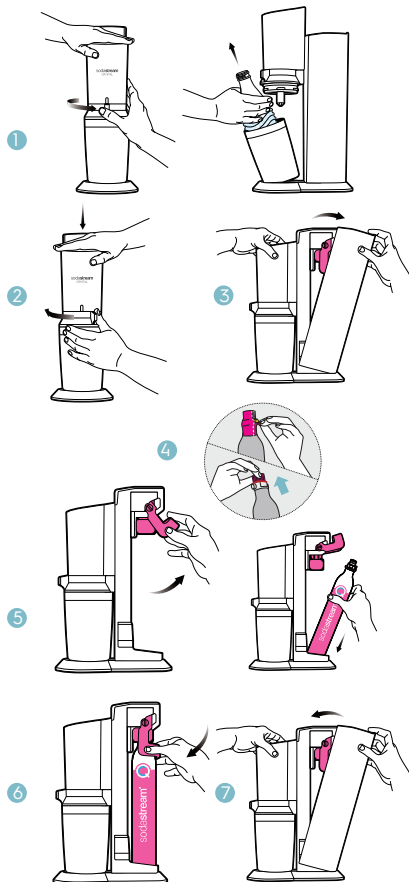
NON-COMPATIBLE
CO₂ SCREW SYSTEM CYLINDER

Please note that the SodaStream AQUA FIZZ™ is only compatible with the CO₂ Quick Connect Cylinder and is **NOT** compatible with the SodaStream® CO₂ Screw System Cylinder or other cylinders.



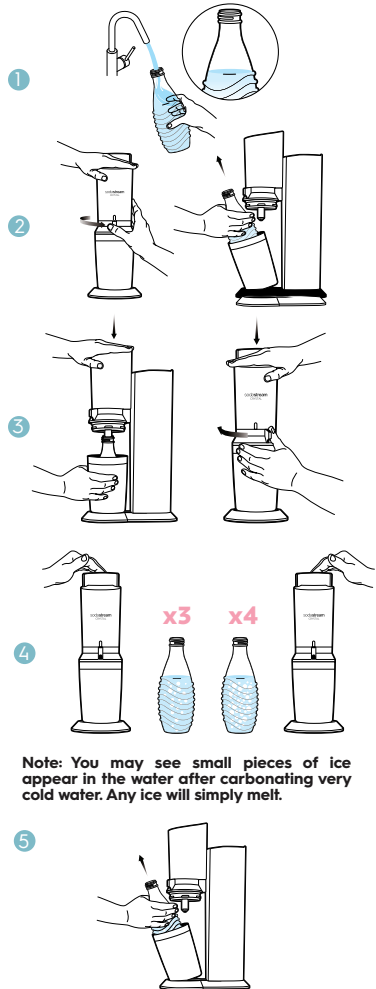
INSTALLING THE CO₂ CYLINDER

1. Place the SodaStream AQUA FIZZ™ Sparkling Water Maker on a flat sturdy surface in an upright position. Turn the carbonating flask lever to the right to the unlocked position. The carbonating head will rise automatically. The carbonating flask will open. Pull the carbonating flask gently forward and remove the SodaStream® Glass carbonating Carafe if it is installed in the SodaStream® Sparkling Water Maker. **WARNING! Never insert or replace the CO₂ cylinder while the Glass carbonating Carafe is installed in the Sparkling Water Maker. This can cause the Glass carbonating Carafe to burst.**
2. Return the carbonating flask to the upright position, push and hold the carbonating head down and turn the carbonating flask lever left until it clicks into the locked position.
3. Gently pull the back cover away from the Sparkling Water Maker to remove.
4. Remove seal and cap from the SodaStream CO₂ Quick Connect Cylinder
5. Raise the cylinder handle. Insert the CO₂ Quick Connect Cylinder in the back of the SodaStream AQUA FIZZ™ Sparkling Water Maker. **WARNING! Never use the SodaStream CO₂ Quick Connect Cylinder if it appears to be damaged.**
6. Lower the cylinder Handle.
7. Reinstall the back cover. Now you are ready to create the bubbles.



CREATE THE BUBBLES

1. Fill the SodaStream Glass carbonating Carafe with cold drinking water up to the fill line. **WARNING! Do not carbonate anything other than water. Other liquids can contaminate and clog internal parts, potentially resulting in excessive pressure, bottle failure during carbonation and serious injury. Never carbonate after flavouring has been added.**
2. Place the SodaStream AQUA FIZZ™ Sparkling Water Maker on a flat sturdy surface in an upright position. Turn the carbonating flask lever to the right to the unlocked position. The carbonating head will rise automatically. **WARNING! Never use a unit with a broken carbonating tube. This can cause excessive pressure, carafe/bottle failure and serious injury.** Tilt the carbonating flask forward and insert the Glass carbonating Carafe into the carbonating flask. Return the SodaStream® carbonating flask to the upright position.
3. Push the carbonating head down and hold. Turn the carbonating flask lever left, to the locked position. Push down firmly on the carbonating button for around one second, release and repeat. Repeat 3 times for standard fizz, 4 times for strong fizz, and more for extra strong fizz.
4. When the desired level of carbonation is achieved, please wait 3 seconds and turn the carbonating flask lever to the right to the unlocked position until the carbonating head starts to rise. As you start to turn to the unlock position you will hear the excess gas being safely released from the Glass carbonating Carafe.
5. Tilt the SodaStream® carbonating flask forward and remove the Glass carbonating Carafe from the SodaStream AQUA FIZZ™ Sparkling Water Maker.
6. Pour and enjoy a fresh sparkling drink!



Note: You may see small pieces of ice appear in the water after carbonating very cold water. Any ice will simply melt.

CARE

SODASTREAM AQUA FIZZ™ SPARKLING WATER MAKER CARE

- Never use abrasive cleaners or sharp tools to clean. If needed, use a mild liquid dish soap and a soft damp cloth to gently clean.
- Wipe spills to keep base dry.
- Do not place in water or wash in a dishwasher, doing so will seriously damage your Sparkling Water Maker.

GLASS CARAFE CARE

- The SodaStream Glass Carafe may be cleaned in a dishwasher.

FOR YOUR SAFETY

SAVE THESE INSTRUCTIONS AND PROVIDE THEM TO ANY SUBSEQUENT USERS.

WARNING! Before using the Sparkling Water Maker, to reduce risk of personal injury and damage to your product, please read this important safety information.

Before allowing anyone to use your Sparkling Water Maker, please be sure they understand how to do so safely. Any servicing or repair should be performed by a SodaStream-authorized service representative.

The Sparkling Water Maker is only intended for use by people over the age of 12. People with reduced physical or mental capabilities should only use the product if they are supervised by an adult responsible for their safety and after they have been given instruction concerning the safe use of the product.

TO REDUCE THE RISK OF EITHER SERIOUS INJURY OR DAMAGE TO THE SPARKLING WATER MAKER DURING CARBONATION:

- Only use your Sparkling Water Maker in its upright position, on a flat, stable surface.
- Do not place your Sparkling Water Maker on a hot surface (e.g. kitchen oven/stove) and never use it close to a flame or leave in direct sunlight.
- Carbonate water only.
- Do not add flavour before carbonation. Other liquids (except water) can contaminate and clog internal parts, potentially resulting in excessive pressure and bottle failure during carbonation.
- Do not use the Sparkling Water Maker if the carbonating tube is broken or missing.
- Check that your Carbonating Bottle is properly inserted before carbonating.
- Do not move your Sparkling Water Maker or remove the Carbonating Bottle during carbonation.
- Do not carbonate an empty Carbonating Bottle. Do not transport the machine with the cylinder and/or bottle attached.

CARBON DIOXIDE CO₂ CYLINDER

To reduce the risk of a CO₂ leak, personal injury and property damage:

- Do not insert a CO₂ Cylinder into the Sparkling Water Maker when a Carbonating Bottle is installed.
- Do not use if damaged. Inspect the CO₂ Cylinder and CO₂ Cylinder valve prior to use for dents, punctures, or other damage. If damaged, contact a SodaStream-authorized service representative.
- Do not tamper with the CO₂ Cylinder in any way, including puncturing, incinerating or removing the valve.
- Do not expose the CO₂ Cylinder to heat above 120°F / 50°C. Protect from sunlight. Store in a well-ventilated area.
- Do not remove a CO₂ Cylinder from the Sparkling Water Maker when it is being operated.
- Do not handle or remove a CO₂ Cylinder while it is discharging CO₂.
- In the event of a CO₂ leak, ventilate the area, breathe fresh air and if feeling unwell seek immediate medical attention.

SODASTREAM® GLASS CARAFE

To reduce the risk of bottle failure which can result in personal injury and property damage:

- Do not use the Glass Carafe if it is cracked, chipped or damaged in any way. Dispose of the Glass Carafe immediately and replace it with a new one.
- Do not use a glass carafe, other than original SodaStream Glass Carafe that is suitable for the SodaStream AQUA FIZZ™.
- Do not subject the Glass Carafe to extreme temperature fluctuations (e.g. do not put hot water in a cold Glass Carafe).
- Do not place the Glass Carafe in the freezer or in extreme cold below 34°F / 1°C.
- **WARNING!** In the rare event that your Glass Carafe breaks during carbonation Do Not open the carbonating flask. Any broken glass particles will be safely contained inside the carbonating flask. Please call your local SodaStream customer service representative for assistance.

SODASTREAM LIMITED WARRANTY

SODASTREAM® SPARKLING WATER MAKERS

Great care has been taken to ensure that your Sparkling Water Maker was delivered to you in good condition. SodaStream® warrants, subject to the terms and conditions set forth in this limited warranty, that your Sparkling Water Maker will be free of defects in materials and workmanship under normal home use for 2 (two) years following the date of purchase. It is recommended that you register your Sparkling Water Maker online by visiting www.sodastream.com and completing the product registration form available on the website.

If your Sparkling Water Maker malfunctions within the warranty period, and we determine the problem is due to faulty workmanship or materials, SodaStream will repair or replace it free of charge at SodaStream's discretion within the limitations set out in this warranty. SodaStream may replace your Sparkling Water Maker with a reconditioned Sparkling Water Maker, or an equivalent one if the model you purchased is no longer available. No refunds shall be given. This limited warranty is available to consumers who purchased the Sparkling Water Maker for personal, family or household use.

This warranty DOES NOT cover damages to Sparkling Water Maker resulting from:

- Abuse, misuse, alteration of the Sparkling Water Maker, or commercial use.
- Carbonating liquids other than water.
- Normal wear and tear (e.g. discoloration).
- Product malfunctions that were a result, in whole or in part, by alteration, disassembly, or repair of the Sparkling Water Maker by a servicer other than an authorized SodaStream Service Center.
- The use of CO₂ Cylinders or carbonating bottles other than those approved by SodaStream for use with your Sparkling Water Maker.
- The use of the Sparkling Water Maker with an adapter connected to the Cylinder valve or to the Sparkling Water Maker.
- The use of an expired plastic carbonating bottle.
- Accident, shipment or anything other than normal household use.

This warranty DOES NOT cover the carbonating bottles and CO₂ Cylinders.

SodaStream is not liable for incidental or consequential damages. The consumer's sole and exclusive remedy shall be repair or replacement according to the terms and conditions of this warranty. Some local laws do not allow the exclusion or limitation of these damages, so these exclusions may not apply to you. To the extent that this warranty is inconsistent with local law, this warranty shall be deemed modified to be consistent with such local law.

You may also have other rights, which vary in accordance with local laws. The benefits given to the consumer by this warranty are in addition to other rights and remedies that may be afforded to the consumer by law in relation to this Sparkling Water Maker.

TO OBTAIN WARRANTY SERVICE FOR YOUR SPARKLING WATER MAKER

If your Sparkling Water Maker is in need of warranty service, please contact SodaStream Customer Service by visiting www.sodastream.com. A SodaStream representative will give you specific instructions on how to arrange for the shipment of your Sparkling Water Maker, at your expense, to one of our authorized service centers. Only SodaStream, or its agents, are authorized to provide warranty repairs or service to your Sparkling Water Maker.

NON-WARRANTY SERVICE

If SodaStream or its authorized agents determine that the malfunction or damage to your Sparkling Water Maker is not covered by the warranty, SodaStream will repair the Sparkling Water Maker only upon payment of the determined repair charge.

FOR CALIFORNIA RESIDENTS

California residents may also obtain warranty service by returning any malfunctioning Sparkling Water Maker directly to a retail store that sells similar SodaStream products. At the retail store's discretion, it may either replace the Sparkling Water Maker or arrange for shipment to a SodaStream repair facility. Sparkling Water Maker registration is not a prerequisite for warranty protection.

SODASTREAM® CO₂ QUICK CONNECT CYLINDERS

Your Sparkling Water Maker has been designed to operate with a SodaStream CO₂ Quick Connect Cylinder. The use of other CO₂ Cylinders is not recommended as they may not be compatible with a SodaStream Sparkling Water Maker. Damages resulting from the use of a cylinder other than a the SodaStream CO₂ Quick Connect Cylinder or use of the SodaStream CO₂ Quick Connect Cylinder not in accordance with the instructions included in this User Guide are not covered by the warranty.

The SodaStream CO₂ Quick Connect Cylinder is provided to you under license. The license allows you to exchange your empty Cylinder for a full one for the price of the CO₂ only.

SODASTREAM® GLASS CARAFE

Your Sparkling Water Maker has been designed to operate with a compatible SodaStream Glass Carafe.

Damages resulting from the use of a glass carafe other than a compatible SodaStream Glass Carafes not in accordance with the instructions included in this User Guide are not covered by the warranty. SodaStream Glass Carafes are available from authorized SodaStream retailers.

TERMS AND CONDITIONS [for U.S.A. consumers only]:

Any and all claims, complaints, demands for judgment or legal actions brought hereunder relating in any way to your Sparkling Water Maker, Carbonating Bottles or CO₂ Cylinder shall be governed by, and construed in accordance with, the local laws of the State in which the SodaStream Sparkling Water Maker was purchased and will be subject to binding arbitration as set out under the heading "Dispute Resolution by Binding Arbitration".

The following paragraph for U.S.A. consumers only]

DISPUTE RESOLUTION BY BINDING ARBITRATION

PLEASE READ CAREFULLY. IT AFFECTS YOUR RIGHTS.

Any dispute, controversy or claim arising out of or relating to any SodaStream product including, but not limited to, claims of personal injury and/or property damage, shall be submitted to arbitration administered by the American Arbitration Association in accordance to its then existing Consumer Arbitration Rules. The AAA Rules are available online at HYPERLINK "<http://www.adr.org/>"www.adr.org, or by calling the AAA at 800.778.7879.

The Federal Arbitration Act (Title 9 of the U.S. Code) shall govern the interpretation, enforcement, and proceedings relating to this arbitration. Arbitration is more informal than a lawsuit in court. It uses a neutral arbitrator instead of a judge or jury, allows for more limited discovery than in court, and is subject to very limited review by courts. Arbitrators can award the same damages and relief that a court can award. By agreeing to arbitration, the parties understand and agree that they are waiving their rights to maintain other available resolution processes, such as a court action or administrative proceeding, to settle their disputes. Any claim shall be brought only in the party's individual capacity, and shall not in any case be brought by the party as a plaintiff or class member in any purported class or representative proceeding. A party who intends to seek arbitration must first send to the other, by certified mail, a written Notice of Dispute ("Notice"). The Notice to SodaStream should be addressed to SodaStream's Corporate Office set out on www.sodastream.com ("Notice Address"). The Notice must (a) describe the nature and basis of the claim or dispute; and (b) set forth the specific relief sought. If an agreement to resolve the claim is not reached within 30 days after the Notice is received, any party may commence an arbitration proceeding. During the arbitration, the amount of any settlement offer made by a party shall not be disclosed to the arbitrator. There shall be one arbitrator. The arbitrator shall have the power to rule on his or her own jurisdiction, including, but not limited to, any objections with respect to the existence, scope, or validity of the arbitration provision or to the arbitrability of any claim or counterclaim. The arbitrator's award shall be binding on all parties, and judgment upon the award may be entered by any court of competent jurisdiction.

PRODUCT DISPOSAL INSTRUCTIONS

Please recycle your expired and damaged Glass Carafe in accordance with local recycling laws. The packaging in which SodaStream products are supplied is made of recyclable materials. Contact your local authority for further information on recycling.

MACHINE RATING INFORMATION

Maximum Working Pressure: 145 psi/10 bar

Maximum Allowed Operating Temperature: 40°C/104°F

SodaStream® is a registered trademark of SodaStream (Switzerland) GmbH or its affiliates.

CALL US

WE'RE HERE FOR ALL YOUR BUBBLY QUESTIONS:

SodaStream USA, Inc.
White Plains, NY 10601
www.sodastream.com
Customer Support Information:
1.800.763.2258
www.sodastream.com

COME ON BOARD

REGISTER NOW AND UPGRADE YOUR SODASTREAM
EXPERIENCE

sodastream.com/regCC or scan the code:







AQUA
FIZZ



4011640011-10/23