



QUICK START GUIDE

sodastream®
AQUA FIZZ™

⚠ Please read this Quick Start Guide before using the Sparkling Water Maker.



SMART

SodaStream is the modern way to enjoy delicious bubbles without the bottles. No more lugging or storing heavy bottles! And fewer empty bottles or cans to discard or recycle. Better for you, better for the environment!



SIMPLE

Now you can easily turn tap water into fresh sparkling water, flavored sparkling drinks and cocktails in seconds. Just fizz, mix and enjoy!



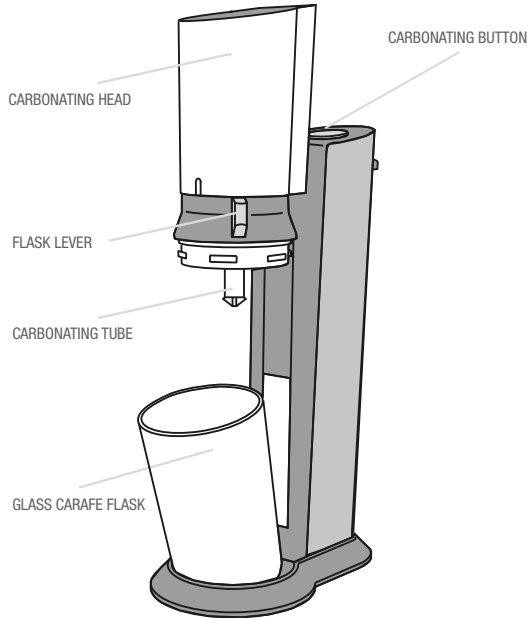
SPARKLING BEVERAGES

Many great-tasting flavors to choose from. And you've just made the world a better place.

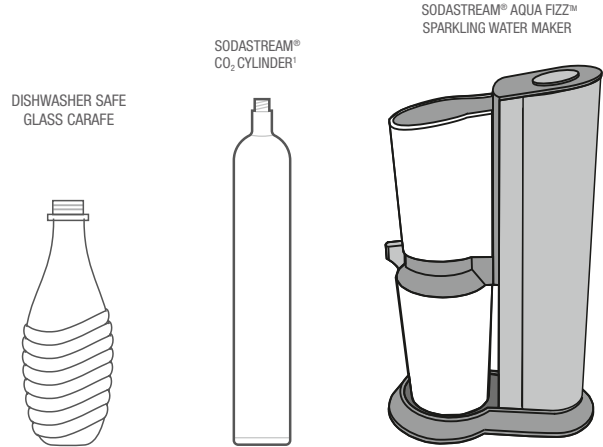
INSIDE THIS GUIDE

AQUA FIZZ™ overview	3
What's inside	3
Installing the CO ₂ cylinder	4
Create the bubbles	5
Flavor your way!	6
For your safety	7
Care	8
Troubleshooting	9
Warranty and legal information	10

AQUA FIZZ™ OVERVIEW



WHAT'S INSIDE

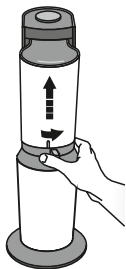


The package includes the SodaStream® AQUA FIZZ™ Sparkling Water Maker, SodaStream® CO₂ Cylinder and a reusable dishwasher safe glass carafe carbonating bottle with fizz-preserving cap.

¹ Includes a 60 L SodaStream® CO₂ Cylinder (under license). Once empty, the 60 L SodaStream® Cylinder can be exchanged for a full 60 L SodaStream® Cylinder for the price of the gas only. A 60 L SodaStream® Cylinder makes up to 60 L of sparkling water depending on the level of carbonation and type of Sparkling Water Maker used.

INSTALLING THE CO₂ CYLINDER

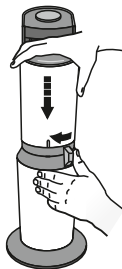
1.



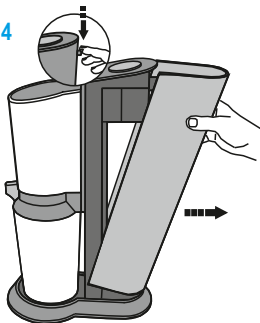
2.



3.



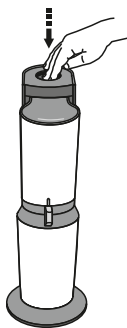
4.



5.

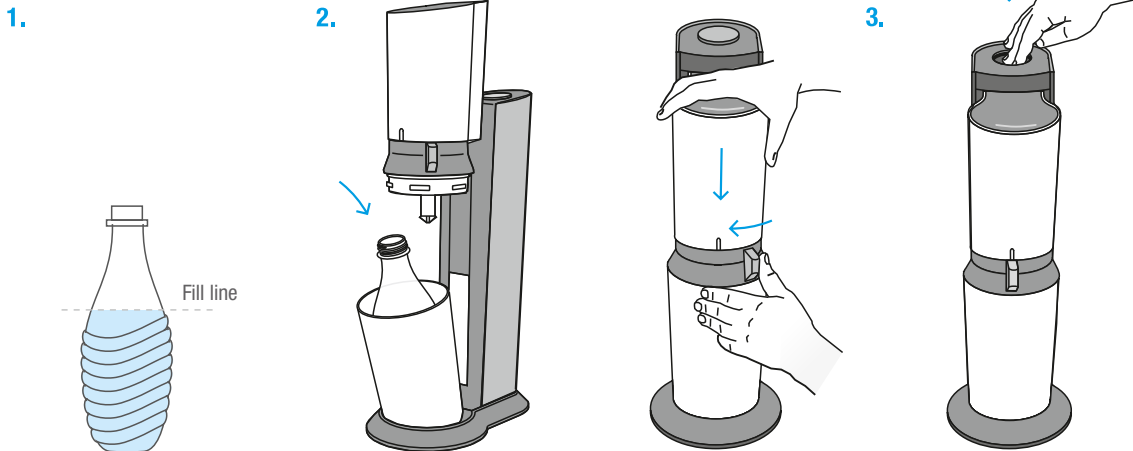


6.



1. Place the AQUA FIZZ™ Sparkling Water Maker on a flat sturdy surface in an upright position. Remove the glass carafe if it is installed in the Sparkling Water Maker. Never insert or replace the cylinder while a glass carafe is installed in the Sparkling Water Maker. Turn the flask lever to the right to the unlocked position. The carbonating head will rise automatically.
2. Tilt the glass carafe flask forward and remove the glass carafe.
3. Return the glass carafe flask to the upright position, push and hold the carbonating head down and turn the flask lever left, to the locked position.
4. Press the rear cover release button downwards and remove the back cover .
5. Remove seal and cap from the SodaStream CO₂ cylinder. Insert the cylinder into the cylinder holder situated on the underside of the carbonating button and screw to the right while applying gentle pressure until it is firmly held in place. Hand-tighten only; DO NOT use tools.
6. Replace the back cover so that it clicks into place. Now you are ready to create the bubbles.

CREATE THE BUBBLES



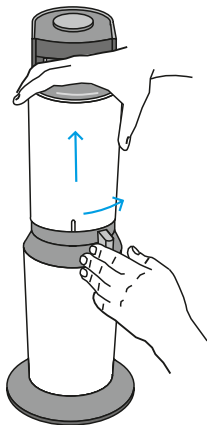
YOU MAY SEE SMALL
PIECES OF ICE APPEAR
IN THE WATER AFTER
CARBONATION OF VERY
COLD WATER

1. Fill the glass carafe with cold water up to the fill line indicated on the glass carafe.
2. Place the AQUA FIZZ™ Sparkling Water Maker on a flat sturdy surface in an upright position. Turn the flask lever to the right to the unlocked position. The carbonating head will rise automatically. Tilt the glass carafe flask forward and insert the glass carafe. Return the glass carafe flask to the upright position. Push the carbonating head down being careful to ensure that the carbonating tube goes inside the glass carafe. If the carbonating tube is outside the glass carafe, it can become bent or broken when the flask is closed and it will not carbonate the water.

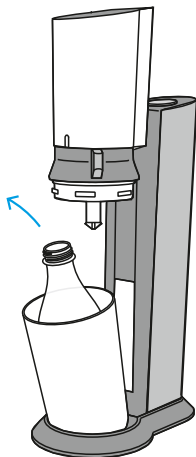
- Hold the carbonating head down and turn the flask lever left, to the locked position.
3. Push down firmly on the carbonating button for around two seconds, release and repeat. Repeat 3 times for light fizz, 5 times for strong fizz, and more for extra strong fizz. You will hear a buzz sound after the third press. It is normal to hear a buzz sound with each additional press which is the normal sound of pressure being released.
- DO NOT CONTINUE PRESSING AFTER HEARING FIVE BUZZES.

CREATE THE BUBBLES

4.



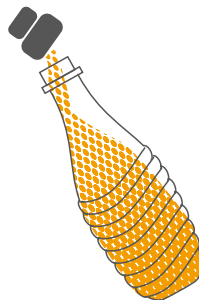
5.



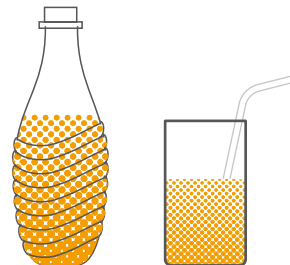
- When the desired level of carbonation is achieved, turn the flask lever to the right to the unlocked position until the carbonating head starts to rise. This will release all the pressure in the bottle and excess gas will be heard being released as the flask lever is unlocked.
- Tilt the glass carafe flask forward and remove the glass carafe from the Sparkling Water Maker. Enjoy your sparkling water or add your preferred SodaStream Sparkling Drink Mix flavor to enjoy a sparkling flavored beverage!

FLAVOR YOUR WAY!

Sparkling Drink Mix



Enjoy!



For sparkling drink mixes: After making sparkling water hold the open glass carafe at an angle and slowly add the desired flavor by pouring it slowly and carefully down the inside wall of the carafe. Close with the fizz-preserving cap and tighten, then mix with a gentle shake. Enjoy!

ONLY CARBONATE WATER.

NEVER CARBONATE AFTER FLAVOR HAS BEEN ADDED.

FOR YOUR SAFETY

SAVE THESE INSTRUCTIONS AND PROVIDE THEM TO ANY SUBSEQUENT USERS.

⚠ It is important that you read and understand all use and care instructions and the important safety information before using the Sparkling Water Maker to prevent personal injury and to prevent damage to your Sparkling Water Maker.

GENERAL WARNINGS:

- **⚠ WARNING:** Misuse of your Sparkling Water Maker may result in serious personal injury.
- **⚠ WARNING: DO NOT** use your Sparkling Water Maker if it is not in its upright position.
- **⚠ WARNING: DO NOT** use your Sparkling Water Maker for anything other than carbonating water. Use of this Sparkling Water Maker for any unintended purposes may result in serious personal injury.
- **⚠ WARNING:** Use your Sparkling Water Maker on a flat, stable surface away from heat sources and do not leave in direct sunlight.
- **DO NOT** place your Sparkling Water Maker on a hot surface (e.g. kitchen oven/stove/hob) and never use it close to a flame.
- The glass carafe must be properly in place before operating your Sparkling Water Maker.
- **DO NOT** move your Sparkling Water Maker during the carbonation process.
- **DO NOT** open the flask during the carbonation process.
- To reduce the risk of personal injury or property damage, any servicing or repair should be performed by a SodaStream-authorized service representative.
- Close adult supervision is necessary when your Sparkling Water Maker is used by children and it is not recommended for use by children under 12.

- Rinse the glass carafe before first use.
- **⚠ WARNING:** ADD FLAVOR ONLY AFTER CARBONATION.
- **⚠ WARNING: DO NOT** carbonate into an empty glass carafe.

GLASS CARAFE

- Fill the glass carafe with cold water only up to the fill line.
- **DO NOT** use the glass carafe if it is cracked, chipped, or damaged in any way. Dispose of it immediately and replace it with a new one.
- **DO NOT** use any other glass bottle, other than an original SodaStream glass carafe that is suitable for a SodaStream glass carafe sparkling water maker (SodaStream models PENGUIN™ and AQUA FIZZ™).
- **DO NOT** subject the glass carafe to extreme temperature fluctuations (e.g. do not put hot water in a cold glass carafe), and do not place it in a freezer (these may cause cracks in the glass carafe).
- In the rare event that your glass carafe breaks during carbonation inside your sparkling water maker do not open the glass carafe flask because any broken glass particles will be safely contained inside the glass carafe flask. Please call your local SodaStream customer service representative for assistance.

CARBON DIOXIDE (CO₂) CYLINDER

- **⚠ WARNING:** In the event of a CO₂ leak, ventilate the area, breathe fresh air and if feeling unwell seek immediate medical attention.
- **⚠ WARNING:** The cylinder and cylinder valve should be inspected prior to use for any dents, punctures, or other damage. If any are detected, **DO NOT** use the cylinder and contact a SodaStream-authorized service representative.
- **⚠ WARNING:** Mishandling the cylinder can result in serious personal injury.
- **⚠ WARNING:** Use caution when removing the cylinder as it may be very cold immediately after use. Always keep the cylinder away from any heat source and out of direct sunlight.
- **DO NOT** transport your Sparkling Water Maker with the cylinder in place.
- **DO NOT** tamper with the cylinder in any way.
- **DO NOT** attempt to puncture or incinerate the cylinder.
- **DO NOT** throw the cylinder or cause it to fall.
- **DO NOT** handle or remove a cylinder while it is discharging CO₂.
- **DO NOT** insert or replace the cylinder with a glass carafe installed in the Sparkling Water Maker.

CARE

SPARKLING WATER MAKER

- Never use abrasive cleaners or sharp tools to clean. If needed, use a mild dish soap liquid and a soft damp cloth to gently clean.
- Wipe spills to keep base dry.
- **DO NOT** place in water or wash in a dishwasher. Doing so will seriously damage your Sparkling Water Maker.
- **DO NOT** place or store the Sparkling Water Maker close to a heat source.

GLASS CARAFE

- The glass carafes are specifically designed for the SodaStream PENGUIN and SodaStream AQUA FIZZ Sparkling Water Makers. Do not use any other type of bottle with these two sparkling water maker models. The glass carafe is suitable for dishwasher cleaning. Replacement SodaStream glass carafes are available wherever SodaStream products are sold.

COMPATIBLE SODASTREAM CARBONATING BOTTLE



TROUBLESHOOTING

Before you call for service, please check the list of problems and solutions below:

SPARKLING WATER MAKER DOES NOT CARBONATE:

- You might be out of gas; replace your cylinder.
- Cylinder may be loose. Remove the carbonating bottle and access the cylinder by following the instructions in the 'Installing the CO₂ cylinder' section and retighten the cylinder by hand. **DO NOT** use tools. Apply firm pressure but do not over tighten. If the cylinder is already firmly in place, it may be empty. Replace with a full cylinder.
- Check that the carbonating bottle glass carafe has been filled up with water to the fill line.
- Ensure that the Sparkling Water Maker is in the upright position.

YOU HEAR GAS ESCAPING DURING CARBONATION:

- A slight hissing of gas may be heard when the sparkling water maker is under pressure. This is quite normal and the noise will stop after carbonation when the flask is opened and the pressure is released.
- When carbonating, you should hear a buzz sound after the third press of the carbonating button as well as after each additional press, which is the normal sound of pressure being released.
- It is normal to hear a small amount of gas released at the end of the carbonation process.

THE FLASK DOES NOT LOCK WITH THE CARBONATING HEAD:

- Ensure that you have installed the glass carafe correctly. Remove the glass carafe and re-install it.

WANT TO RE-CARBONATE A DRINK THAT WAS ALREADY CARBONATED:

- **⚠ WARNING:** FOR YOUR SAFETY, NEVER carbonate again after adding the flavor. You may only recarbonate unflavored sparkling water.

YOUR SPARKLING WATER MAKER CONTINUES TO RELEASE GAS AFTER CARBONATION IS FINISHED:

- **⚠ WARNING:** **DO NOT** remove the cylinder or the glass carafe. Leave the Sparkling Water Maker in an upright position. Do not touch it until you no longer hear gas

escaping. When the Sparkling Water Maker is no longer releasing gas, remove the glass carafe. **CAUTION** : the cylinder may be very cold! With caution remove the cylinder. Contact your local SodaStream Customer Service Center.

- **⚠ WARNING:** In the event of a carbon dioxide leak, ventilate the area, breathe fresh air and if feeling unwell seek immediate medical attention.

YOU HEAR THE SOUND OF LEAKING GAS AFTER INSTALLING A NEW CYLINDER INTO THE SPARKLING WATER MAKER:

- Screw the cylinder tighter into its fitting. **DO NOT** use tools.

YOU EXPERIENCE POOR CARBONATION:

- **⚠ WARNING:** To prevent personal injury: **DO NOT** re-carbonate after adding flavor.
- If you have not yet added flavor, carbonate again to a higher carbonation level.
- Carbonate using cold water.
- If you still experience poor carbonation you may be out of gas. Replace the cylinder.

WATER OVERFLOWS FROM THE GLASS CARAFE DURING CARBONATION:

- Check that the glass carafe is filled only to the fill line.
- Are you pressing the carbonating button for too long or too many times? Use short firm presses only.

THE FLAVOR IN YOUR SPARKLING BEVERAGE IS NOT STRONG ENOUGH:

- Just add more flavor to taste!
- **WARNING:** To prevent personal injury: **DO NOT** re-carbonate after adding flavor.

SMALL PIECES OF ICE APPEAR IN THE WATER AFTER CARBONATION:

- This might happen when carbonating very cold water.

Still having trouble?

Contact your local customer service representative by visiting www.sodastream.com and selecting your country.

SODASTREAM LIMITED WARRANTY

Great care has been taken to ensure that your Sparkling Water Maker was delivered to you in good condition. SodaStream warrants, subject to the terms and conditions set forth in this limited warranty, that your Sparkling Water Maker will be free of defects in materials and workmanship under normal home use for two (2) years following the date of purchase.

It is recommended that you register your Sparkling Water Maker online by visiting www.sodastream.com, selecting your country and completing the product registration form available on the website.

If your Sparkling Water Maker malfunctions within the warranty period, and we determine the problem is due to faulty workmanship or materials, SodaStream will repair or replace it free of charge at SodaStream's discretion within the limitations set out in this warranty. SodaStream may replace your Sparkling Water Maker with a reconditioned Sparkling Water Maker, or an equivalent one if the model you purchased is no longer available. No refunds shall be given. This limited warranty is available to consumers who purchased the Sparkling Water Maker at retail for personal, family or household use.

This warranty DOES NOT cover:

- Abuse, misuse, alteration of the Sparkling Water Maker, or commercial use;
- Damage resulting from carbonating liquids other than water;
- Normal wear and tear (e.g. discoloration);
- Product malfunctions that were a result, in whole or in part, by alteration, disassembly, or repair of the Sparkling Water Maker by a servicer other than an authorized SodaStream Service Center;
- Damage resulting from the use of cylinders or glass carafes other than those approved by SodaStream for use with your Sparkling Water Maker;
- Damage resulting from use of the Sparkling Water Maker with an adapter valve;
- Damage caused by accident, shipment or anything other than normal household use;
- The glass carafes and cylinders.

SodaStream is not liable for incidental or consequential damages. The consumer's sole and exclusive remedy shall be repair or replacement according to the terms and conditions of this warranty. Some local laws do not allow the exclusion or limitation of these damages, so these

exclusions may not apply to you. To the extent that this warranty is inconsistent with local law, this warranty shall be deemed modified to be consistent with such local law.

You may also have other rights, which vary in accordance with local laws. The benefits given to the consumer by this warranty are in addition to other rights and remedies that may be afforded to the consumer by law in relation to this Sparkling Water Maker.

TO OBTAIN WARRANTY SERVICE

If your Sparkling Water Maker is in need of warranty service, please contact your local SodaStream Customer Service by visiting www.sodastream.com and selecting your country to find your local contact details. A SodaStream representative will give you specific instructions on how to arrange for the shipment of your Sparkling Water Maker, at your expense, to one of our authorized service centers. Only SodaStream, or its agents, are authorized to provide warranty repairs or service to your Sparkling Water Maker. Repair by a third party voids the warranty.

FOR CALIFORNIA RESIDENTS

California residents may also obtain warranty service by returning any malfunctioning Sparkling Water Maker directly to a retail store that sells similar SodaStream products. At the retail store's discretion, it may either replace the product or arrange for shipment to a SodaStream repair facility. Product registration is not a prerequisite for warranty protection.

NON-WARRANTY SERVICE

If SodaStream or its authorized agents determine that the malfunction or damage is not covered by the warranty, SodaStream will repair the Sparkling Water Maker only upon payment of the determined repair charge.

TERMS AND CONDITIONS

Any and all claims, complaints, demands for judgment or legal actions brought hereunder relating in any way to your Sparkling Water Maker shall be governed by, and construed in accordance with, the local laws of the country in which the SodaStream Sparkling Water Maker was purchased and in the US will be subject to binding arbitration as set out under the heading "Dispute Resolution by Binding Arbitration".

DISPUTE RESOLUTION BY BINDING ARBITRATION

PLEASE READ CAREFULLY. IT AFFECTS YOUR RIGHTS.

1. Any dispute, controversy or claim arising out of or relating to any SodaStream product including, but not limited to, claims of personal injury and/or property damage, shall be submitted to arbitration administered by the American Arbitration Association in accordance to its then existing Consumer Arbitration Rules. The AAA Rules are available online at www.adr.org, or by calling the AAA at 800.778.7879.
2. The Federal Arbitration Act (Title 9 of the U.S. Code) shall govern the interpretation, enforcement, and proceedings relating to this arbitration.
3. Arbitration is more informal than a lawsuit in court. It uses a neutral arbitrator instead of a judge or jury, allows for more limited discovery than in court, and is subject to very limited review by courts. Arbitrators can award the same damages and relief that a court can award. By agreeing to arbitration, the parties understand and agree that they are waiving their rights to maintain other available resolution processes, such as a court action or administrative proceeding, to settle their disputes.
4. Any claim shall be brought only in the party's individual capacity, and shall not in any case be brought by the party as a plaintiff or class member in any purported class or representative proceeding.
5. A party who intends to seek arbitration must first send to the other, by certified mail, a written Notice of Dispute ("Notice"). The Notice to SodaStream should be addressed to SodaStream's Corporate Office set out on www.sodastreamusa.com ("Notice Address"). The Notice must (a) describe the nature and basis of the claim or dispute; and (b) set forth the specific relief sought. If an agreement to resolve the claim is not reached within 30 days after the Notice is received, any party may commence an arbitration proceeding. During the arbitration, the amount of any settlement offer made by a party shall not be disclosed to the arbitrator.
6. There shall be one arbitrator. The arbitrator shall have the power to rule on his or her own jurisdiction, including, but not limited to, any objections with respect to the existence, scope, or validity of the arbitration provision or to the arbitrability of any claim or counterclaim.
7. The arbitrator's award shall be binding on all parties, and judgment upon the award may be entered by any court of competent jurisdiction.

SODASTREAM CYLINDERS

Your Sparkling Water Maker has been designed to operate with a SodaStream CO₂ cylinder. The use of other CO₂ cylinders is not recommended as they may not be compatible with a SodaStream Sparkling Water Maker. Damages resulting from the use of a cylinder other than a SodaStream cylinder are not covered by the warranty. The SodaStream CO₂ cylinder is provided to you under license. The license allows you to exchange your empty cylinder for a full one for the price of the gas content only, at a participating SodaStream authorized retailer. For a list of local retailers near you and ordering information visit www.sodastream.com and select your country.

SODASTREAM GLASS CARAFES

Your Sparkling Water Maker has been designed to operate with a suitable SodaStream glass carafe. Damages resulting from the use of a bottle other than a suitable SodaStream glass carafe are not covered by the warranty. Before each use, check the glass carafe for cracks, chips or any other damage. Replace cracked, chipped and damaged glass carafes with new ones. SodaStream glass carafes are available from authorized SodaStream retailers.

PRODUCT DISPOSAL INSTRUCTIONS

Please recycle cracked, chipped or otherwise damaged glass carafes in accordance with local recycling laws. The packaging in which SodaStream products are supplied is made of recyclable materials. Contact your local authority for further information on recycling.

MACHINE RATING

Maximum Working Pressure: 145 psi/10 bar

Maximum Allowed Operating Temperature: 104°F / 40°C

To find the contact details of your local SodaStream Customer Service please visit www.sodastream.com and select your country.

SODASTREAM is a registered trademark of Soda-Club (CO₂) SA or its affiliates.

sodastream®

water made exciting

USA:

Imported by
SodaStream USA, Inc.
Mt. Laurel, NJ 08054
Toll-Free Customer Support: 1-800-763-2258
Email: info@sodastreamsupport.com
www.sodastreamusa.com



twitter.com/sodastreamusa



www.facebook.com/sodastream



www.youtube.com/user/sodastreamguru

