



Class of 2016



RK
RIFLE/KAYNEE

We haven't missed a day
of school in over
125 years!

Catalog

201-796-8101

WWW.RIFLEKAYNEE.COM

TABLE OF CONTENTS



1-2	Blazers
3-6	Pants, Shorts & Gym Shorts
7-11	Shirts
12-17	Skirts, Skorts & Jumpers
18	RK Platinum Rugby Shirt, Pants & Shorts
19	Special Features
20	Screen Printing & Embroidery
21-24	Uniform Fabric Plaids and Solids
25	Pants Size Chart
26	Girls Jumpers & Skirts Size Chart
27	Blazer Size Chart
28	Kayne Size & Color Guide
29	RK Corporate Responsibilities





*it fits great, has pockets for all my
gadgets and the girls love it!! - Brad M.*



1

BLAZERS

201-796-8101

RK

BOYS & GIRLS BLAZERS



2



BL Blazers

100% polyester.
Boys/Mens Single Breasted, 2 button blazer.
Fully lined, notched lapel, center vent,
2 pockets with flap, 1 chest welt pocket.
Wrinkle and stain resistant.

Sizes: 4-7
8-20
8-20 Husky
34-56
(Long & Short)

Colors: Navy, Burgundy, Black, Green



GB Blazers

100% polyester.
Girls/Ladies Single Breasted, 2 button blazer.
Fully lined, notched lapel, center vent,
2 pockets, 1 chest welt pocket. Wrinkle
and stain resistant.

Sizes: Girls 7-20
Ladies 2-28

Colors: Navy



My wrinkle and stain resistant pants keep me looking my best. - Matt L.



BEST DRESSED



Colors:
Dark Grey



RD Flannel Pleated Front Pant

50% polyester - 25% rayon - 25% acrylic. Boys/Mens Relaxed Fit Pleated Front Dress Pant. Adjustable waist and Double knees in sizes 3-7, 8-16 and husky only. Quarter top front pockets, 2 back pockets, hook and eye closure. Wrinkle and stain resistant.

- Sizes:** 3-7 Regular & Slim
8-16 Regular & Slim
25-40 Husky
28-32 Prep
33-36 Student
38-44 Mens

Adjustable waistband



(Prep, Student & Mens Inseams available in 30L, 32L & 34L)



Colors:
Dark Grey



DG Flannel Plain Front Pant

50% polyester - 25% rayon - 25% acrylic. Boys/Mens Relaxed Fit Plain Front Dress Pant. Adjustable waist and Double knees in sizes 3-7, 8-16 and husky only. Quarter top front pockets, 2 back pockets, hook and eye closure. Wrinkle and stain resistant.

- Sizes:** 3-7 Regular & Slim
8-16 Regular & Slim
25-40 Husky
28-32 Prep
33-36 Student
38-44 Mens

Adjustable waistband



(Prep, Student & Mens Inseams available in 30L, 32L & 34L)

3

PANTS & SHORTS



DG Twill Plain Front Pant

65% polyester - 35% cotton. Boys/Mens Relaxed Fit Plain Front Pant. **Adjustable waistband** and double knees in 3-7, 8-16 and husky sizes only. Quarter top front pockets, 2 back pockets, hook and eye closure. Wrinkle and stain resistant.

Sizes: 3-7 Regular & Slim
8-16 Regular & Slim
25-40 Husky
28-32 Prep
33-36 Students
38-44 Mens

(Prep, Student & Mens Inseams available in 30L, 32L & 34L)

Adjustable waistband



MT/AP Twill Pleated Front Pant

65% polyester - 35% cotton. Boys/Mens Relaxed Fit Pleated Front Pants. **Adjustable waistband** and double knees in 3-7, 8-16 and husky sizes only. Elastic back available in 3-7, 8-16 and husky sizes. Quarter top front pockets, 2 back pockets, hook and eye closure. Wrinkle and stain resistant.

Sizes: 3-7 Regular & Slim
8-16 Regular & Slim
25-40 Husky
42-48 Husky
28-32 Prep
33-36 Student
38-44 Mens

(Prep, Student & Mens Inseams available in 30L, 32L & 34L)

Adjustable waistband



IG Twill Plain Front Short

65% polyester - 35% cotton. Boys/Mens Relaxed Fit Plain Front Short. **Adjustable waistband** in 3-7, 8-16 and husky sizes only. Quarter top front pockets, 2 back pockets, hook and eye closure. Wrinkle and stain resistant.

Sizes: 3-7 Regular & Slim
8-16 Regular & Slim
25-40 Husky
28-32 Prep
33-36 Student
38-44 Mens

Adjustable waistband



AS/BS Twill Pleated Front Short

65% polyester - 35% cotton. Boys/Mens Relaxed Fit Pleated Front Short. **Adjustable waistband** in sizes 3-7, 8-16 and husky sizes only. Elastic back available in 3-7 and husky sizes only. Quarter top front pockets, 2 back pockets, hook and eye closure. Wrinkle and stain resistant.

Sizes: 3-7 Regular & Slim
8-16 Regular & Slim
25-40 Husky
28-32 Prep
33-36 Student
38-44 Mens

Adjustable waistband



Colors: Navy, Khaki, Brown, Light Grey, Grey, Charcoal, Green, Dark Green, Black





GS Girls Twill Pleated Short

65% polyester - 35% cotton.
Girls/Juniors Pleated Front Short. Full elastic back in 3-6x and 1/2 sizes only. Quarter top front pockets, imitation watchpocket, hook and eye closure. Wrinkle and stain resistant.

Sizes: 3-6X Regular
7-16 Regular & Slim
6.5-18.5
3-27 Junior

GP Girls Twill Pleated Pant

65% polyester - 35% cotton.
Girls/Juniors Pleated Front Pant. Full elastic back in 3-6x, and 1/2 sizes only. Quarter top front pockets, imitation watch pocket, hook and eye closure. Wrinkle and stain resistant.

Sizes: 3-6X Regular
7-16 Regular & Slim
6.5-18.5
3-27 Junior



Colors: Navy, Khaki, Brown, Grey, Charcoal, Green, Dark Green, Black



EL Flat Front Midrise Stretch Pant

97% cotton - 3% spandex.
Girls/Juniors Plain Front Midrise Stretch Pant. **Adjustable waistband** on all sizes, L shaped front pockets, 2 back pockets with framestitching, hook and eye closure. Wrinkle and stain resistant.

Sizes: 3-6X Regular
7-16 Regular & Slim
6.5-18.5
3-27 Junior

Adjustable waistband



ES Flat Front Midrise Stretch Short

97% cotton - 3% spandex.
Girls/Juniors Plain Front Midrise Stretch Short. **Adjustable waistband** on all sizes, L shaped front pockets, 2 back pockets with framestitching, hook and eye closure. Wrinkle and stain resistant.

Sizes: 3-6X Regular
7-16 Regular & Slim
6.5-18.5
3-27 Junior

Adjustable waistband



Colors: Navy, Khaki, Black





ZS Pull On Short

65% polyester - 35% cotton.
Unisex Pull on Shorts. Full elastic front and back with 3 needle stitching. Quarter top front pockets, no fly. Wrinkle and stain resistant.

Sizes: Youth 0-12



PO Pull On Pant

65% polyester - 35% cotton.
Unisex Pull on Pant. Full elastic front and back with 3 needle stitching. Double knees in all sizes. Quarter top front pockets, no fly. Wrinkle and stain resistant.

Sizes: Youth 0-12

Colors: Navy, Khaki, Brown, Grey, Charcoal, Green, Dark Green, Black

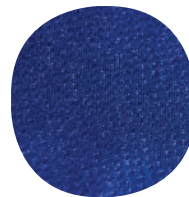


Dazzle Mesh Gym Short

Dazzle Mesh
6.0 sq oz yd, piece dyed
100% Polyester double knit

Sizes: Youth YXXS-YXL
Adult Small-3XL

Colors: Navy, Royal, Black, Wine, Hunter



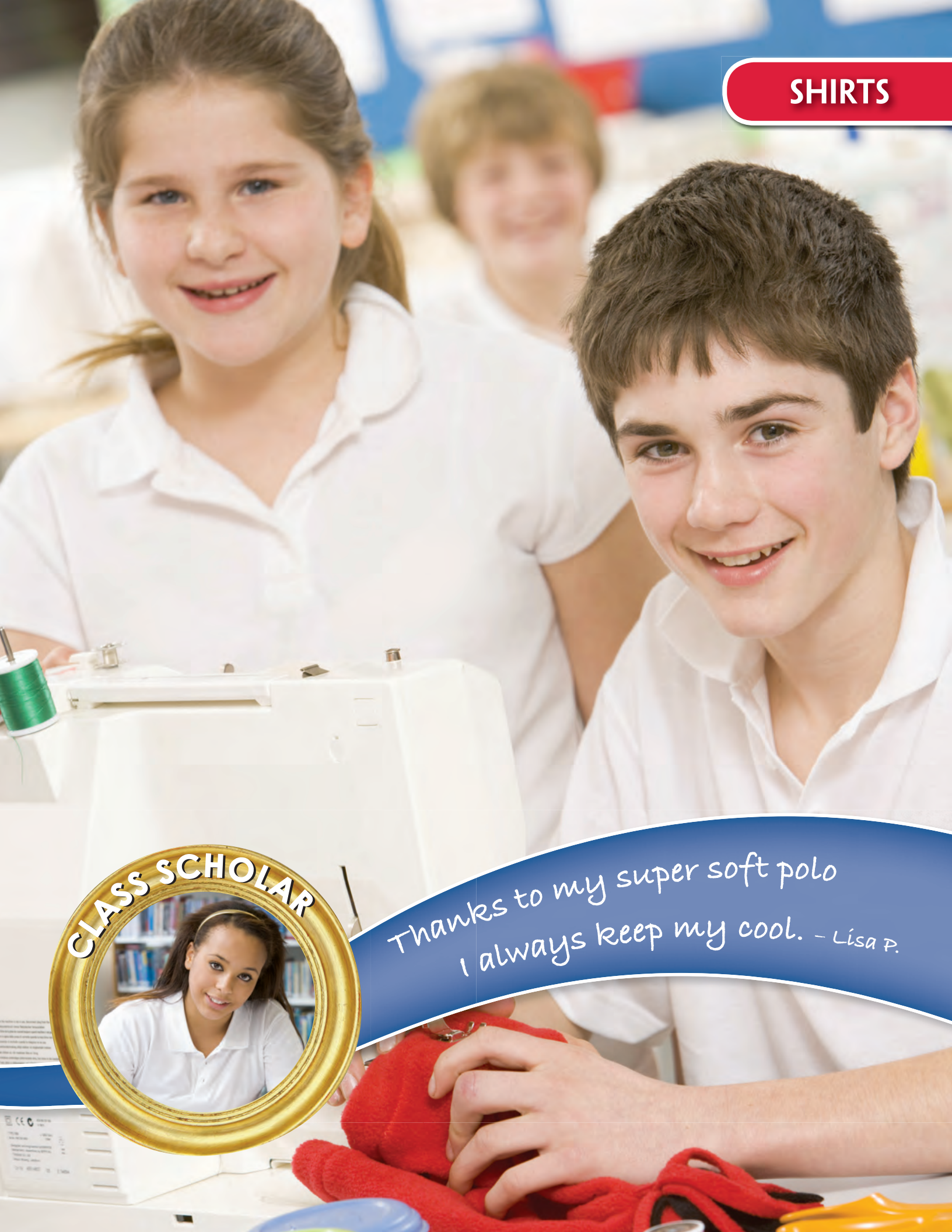
**Closed hole
moisture wicking mesh**



SHIRTS

CLASS SCHOLAR

Thanks to my super soft polo
I always keep my cool. - Lisa P.



UNISEX KNITS



Hemmed Pique

60% combed cotton - 40% polyester. Our basic Hemmed pique. 7 oz of soft colorfast pique. Double top stitch on shoulders, armholes and bottom hem, reinforced shoulders and armholes. Fused placket.

Short & Long Sleeve

Sizes: Youth XXS-XL
Adult S-3XL

Colors: Black, Ash Grey, White, Hunter, Bright Navy, Maize, Royal, Light Blue, Purple, Red, Cardinal, Wine



Rib Cuff Pique

60% combed cotton - 40% polyester. Same as our basic pique but with rib cuff.

Short & Long Sleeve

Sizes: Youth XXS-XL
Adult S-3XL



Rib Cuff Jersey

60% combed cotton - 40% polyester. Our luxurious soft jersey made with a rib cuff. Double needle top stitch on shoulders, armholes, sleeves and bottom hem. Reinforced armholes and shoulders. Fused placket.

Short & Long Sleeve

Sizes: Youth XXS-XL
Adult XS-3XL

Colors: White, Hunter, Bright Navy, Light Blue, Red, Wine, Maize



Cotton Pique

100% combed cotton. Luxury pique made in a pre shrunk colorfast cotton fabric. All of our high quality details with the addition of vented bottom and wood tone buttons.

Short & Long Sleeve

Sizes: Youth XXS-XL
Adult S-3XL



MOISTURE WICKING SHIRTS



Moisture Wicking Unisex Shirt

100% Polyester moisture wicking fabric. Double stitched on shoulders, armholes and vented bottom hem. The fabric will dry quickly and allows rapid evaporation. Stay cool in warm conditions. Stay warm in cool conditions.

Short Sleeve

Sizes: Youth XXS-XL
Adult S-3XL

Colors: White, Navy, Black, Gold, Royal, Wine, Hunter, Red, Light Blue



Moisture Wicking Fitted Girls Shirt

100% Polyester moisture wicking fabric. Girls Fitted shirt. The best in the school marketplace. Extended narrow placket, vented bottom. Tailored for girls and junior fit.

Short Sleeve

Sizes: Youth XXS-XL
Adult S-2XL

Colors: White, Navy, Black, Gold, Royal, Wine, Hunter, Red, Light Blue



BOYS/MENS WOVENS SHIRTS



Button Down Solid Oxford

60% cotton - 40% polyester. Solid yarn dyed Oxford. 50 pic construction. Wrinkle resistant, soil resistant. Single needle/double needle tailoring. Sleeve placket. Adult and husky sizes made with **NEXPANDER** feature.

Short & Long Sleeve

Sizes: Boys 4-20
Husky 10-20
Adult S-3XL

Colors: White, Blue, Maize



Solid Broadcloth

65% polyester - 35% cotton. Our basic school shirt in permanent press piece dyed broadcloth with spread collar. Full make with placket, pocket, 2 piece back. Great entry level shirt for the school market. Made with **NEXPANDER** feature for growth and comfort.

Short & Long Sleeve

Sizes: Boys 4-20
Husky 10-20
Adult S-3XL

Colors: White, Blue, Maize





Peter Pan

65% polyester - 35% cotton.
Popular Peter Pan collar blouse with hi count broadcloth fabric. Lip cuff on short sleeve models. Straight bottom hem.

Short & Long Sleeve

Sizes: Girls 4-6x
Girls 7-16
Adult XS-2XL

Colors: White, Blue, Yellow



Button Down Oxford

60% cotton - 40% polyester.
Girls and Ladies Oxford model with Button Down collar. 50 pic oxford, yarn dyed with placket, single needle/double needle tailoring. Full fit model with slight taper in the body. Wrinkle & stain resistant.

Short & Long Sleeve

Sizes: Girls 4-6x
Girls 7-16
Adult XS-3XL

Colors: White, Blue, Maize



Pointed Collar

65% polyester - 35% cotton.
Pointed collar girls blouse. Popular pointed collar blouse with hi count broadcloth fabric. Lip cuff on short sleeve models. Straight bottom hem.

Short & Long Sleeve

Sizes: Girls 4-6x
Girls 7-16
Adult XS-2XL

Colors: White, Blue, Yellow



GIRLS KNITS



Fitted Pique

60% combed cotton - 40% polyester. Girls Fitted Pique knit. The best in the school marketplace. Extended narrow placket, vented bottom. Tailored for girls and junior fit.

Short & Long Sleeve

Sizes: Youth XXS-XL
Adult S-2XL

Colors: White, Black, Fuchsia, Hunter, Bright Navy, Light Blue, Gold, Turquoise, Orange, Purple, Red, Wine, Cardinal, Maize, Corn, Lime, Pink



Jersey Banded Bottom

60% cotton - 40% polyester. A Banded Bottom Jersey with 3 button placket. Great model for both male and female. Reinforced shoulders and armholes, double top stitch on shoulders, armholes, cuff and Lycra rib hem.

Short & Long Sleeve

Sizes: Youth XXS-XL
Adult XS-3XL

Colors: White, Light Blue, Bright Navy, Maize, Wine



Jersey Dress

60% combed cotton - 40% polyester. Fashion collar model dress with generous gathers. Hemmed sleeve. 3 button placket.

Short & Long Sleeve

Sizes: Youth XXS-XL



Colors: Hunter, Bright Navy, Red, Wine



SKIRTS, SKORTS & JUMPERS

SKORTS & CULOTTES



**Skort - Side Pocket
w/ Adjustable Waist**
STYLE - SK/104



**2 Pleat Skort Front & Back
w/ Knit Short
w/ Adjustable Waist**
STYLE - UD/907



**Skort - Front and Back Flap
w/ Adjustable Waist**
STYLE - SR



**2 Tab Skort
w/ Adjustable Waist**
STYLE - 105



Unbanded Skort
STYLE - FS/FA



**Center Pleat Culotte
w/ Adjustable Waist**
STYLE - 136



**2 Kick Pleat Culotte
Side Pocket
w/ Adjustable Waist**
STYLE - 140



**Culotte with Front & Back Flaps
w/ Side Pocket & Adjustable Waist**
STYLE - 148



**Skort - Front and Back Flap
w/ Adjustable Waist**
STYLE - SG

SKIRTS & KILTS



**Center Pleat Skirt
Adjustable Waist**
STYLE - 131



**Knife Pleat Skirt w/ Side Pocket
& Adjustable Waist**
STYLE - 132



**Box Pleat Skirt
Non Stitched Down Pleats**
STYLE - 133



**2-Kick Pleat Skirt, Front & Back
w/ Side Pocket & Adjustable Waist**
STYLE - 134



Kilt - No Elastic
STYLE - 137



Kilt - Bias Band
STYLE - BK



**Knife Pleat Skirt
Stitched Down - No Elastic**
STYLE - 142



**Box Pleat Skirt
No Elastic
Stitched Down Pleats**
STYLE - 143



**Drop Waist Multi-Pleat Skirt
Optional Knit Short**
STYLE - GAT/KGAT

JUMPERS



**Drop Waist Jumper
Zipper Front - With Tie Tab**
STYLE - 154



Princess Jumper
STYLE - 156



**Jumper Box Pleat Skirt
V-Front Top**
STYLE - 161



**Knife Pleat Skirt
V-Front Top**
STYLE - 162



**2 Pleat Skirt
V-Neck Top**
STYLE - 164



**2 Kick Pleat Skirt
Button Shoulder Top**
STYLE - 168



**Box Pleat Skirt
Button Shoulder Top**
STYLE - 169



**Knife Pleat Skirt
Slit Front Top**
STYLE - 172



**Box Pleat Skirt
Slit Front Top**
STYLE - 173

JUMPERS



**Pleat Skirt
Slit Front Top**
STYLE - SP-174



**Box Pleat Skirt
Pinafore Top**
STYLE - PB-175



**Center Pleat Skirt
Slit Front Top**
STYLE - 176



**Tunic with Loose Belt
Top Stitched Pleats**
STYLE - 177



**Tunic with Attached Belt
Top Stitch Pleats**
STYLE - 178



**Center Pleat Skirt
V-Front Top**
STYLE - 180



**Knife Pleat Skirt
Double Breasted Top**
STYLE - 182



**2-Pleat Skirt
Double Breasted Top**
STYLE - 184



**2 Pleat Skirt
Pinafore Top**
STYLE - 187

JUMPERS



**Knife Pleat Skirt
Pinafore Top**
STYLE - 188



**2 Pleat Skirt
High Neck Top**
STYLE - 194



**2 Pleat Skirt
V-Neck Top**
STYLE - 195



**2 Pleat Skirt with Flaps
High Neck Top**
STYLE - 196



**2 Pleat Skirt with Flaps
V-Neck Top**
STYLE - 197



**2 Pleat Skirt
Scoop Neck Top**
STYLE - 198



Drop Waist - Scoop Neck
STYLE - 199



PLATINUM

Most garments are made using carded cotton. **RK PLATINUM** garments are made using only **Combed Cotton**...never carded. Carded cotton is a cheaper cotton and if you have ever worn a heavy, scratchy, cardboard like garment then you know what carded cotton feels like. It's bulky, fuzzy and it's an uneven knit. **Combed Cotton** is finer, smoother and consistent.

That's what makes **RK PLATINUM** garments different. It's why our garments are **super soft, luxurious and wearable.**

A Rugby Model

100% Combed Cotton. True rugby make with twill collar, placket and vent trim. Side vents, rubber buttons, longer length. Soft all cotton double knit jersey for rugged wear. The Cadillac in the uniform market.

Colors: Bright Navy, Hunter, Wine

Sizes: Youth XXS-XL
Adult S-3XL



B DG Plain Front Pant

60% combed cotton, 40% polyester. Mens Relaxed fit Plain Front Pants. Quarter top front pockets, 2 back pockets, hook and eye closure. Wrinkle and stain resistant.

Colors: Navy, Khaki

Sizes: Prep 28-32
Student 33-36
Mens 38-44
(Inseams 30L, 32L & 34L)



IG Plain Front Short

60% combed cotton, 40% polyester. Quarter top front pockets. 2 back pockets, hook and eye closure. Wrinkle and stain resistant.

Colors: Navy, Khaki

Sizes: Prep 28-32
Student 33-36
Mens 38-44



Platinum Pique

Piece dyed - color fast, 60% combed cotton 40% ring spun poly. Our softest shirt to date!! Banded sleeve. Double needle top stitch on shoulder, armhole, sleeve and bottom hem. Fused placket. New Updated specs for a better fit!

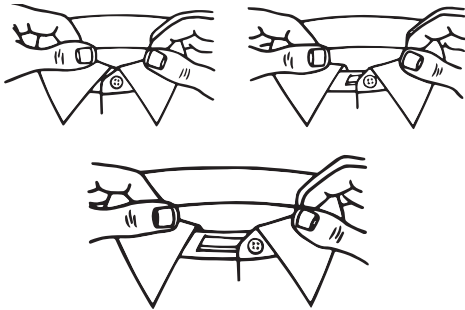
Colors: DK Navy, white, Ht Grn, Burg, Lt Blue, Black and Royal.

Sizes: Youth XXS-XL
Adult S-3XL



SPECIAL FEATURES

Check out all the special features that go into making RK#1



Nexpander

Like a lot of good ideas the Nexpander is remarkably simple. A little sliding tab under the collar that expands as a boy's neck expands. Up to two full sizes.



Zippers

We offer nylon zippers for added quality and durability. Nylon handles stress much better, and repair is less common with nylon vs metal. All of our zippers are dyed to match our fabric colors.



Top Stitching

For a better fit, better look and more comfort, we add top stitching in all the right places.



Adjustable Waistband

Inside buttonhole elastic so it easily adjusts to your growing student. Take it in or let it out... It does it all!!



Elastic Waistband

For those students who like the elastic feel, we offer elastic back pants and shorts for comfort and fit.



Pockets

We reinforce our pockets at the stress points to add strength for longer lasting quality.



Double Knees

Students are always crawling around and playing on their knees, so we added a reinforced knee to make this area stronger.



Baked In Pleats

In our skirt and jumper line, RK does not just press the pleats in with an iron. We set the pleats one garment at a time and then we bake them in a steambox that's heated to over 200 degrees!

This guarantees a crisp, sharp pleat that will last!

Fabrics

- **Colorfast Fabrics:** All of our fabrics are colorfast which means our colors will stay rich and vibrant, wash after wash.
- **Stain Resistant:** Many of RK's products are stain resistant to help extend the life of the garments. No more worries about food fights in the cafeteria!
- **Wrinkle Resistant:** Your customers can put away the iron... Many of RK's garments are wrinkle resistant (in fact the boys twills are wrinkle free!!) so the students will maintain a sharp look all day just like if it was pressed by an iron.
- **Pill Resistant:** Many of RK's products are pill resistant to help extend the life of the garment.

Between our Pill, Wrinkle and Stain Resistance Colorfast Fabrics, RK garments will look NEW after repeated washes. These garments are built to last!!

Welcome to RK's Screen Print and Embroidery class.

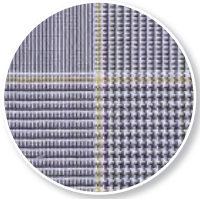
By the end of this lesson you will have learned why you should give all of your embroidery & screen printing to RK.

In this course you will learn:

- That **RK's** in house services provide a quick, competitive turnaround in the height of the season as well as the off season
- That your employees can spend time servicing your customers on the floor instead of tracking what units went or came back to the embroiderer
- That your product will come in already embellished, in the poly bag with its own UPC code (of course it could come fan folded if you want ...we don't discriminate)
- That if RK damages your product during the process, we replace it ...It's that simple...no hassles like you have with your local providers
- That if you provide your own digitizing disk there is **NO** set up fee
- That there is no additional transportation costs like you would have with your local provider
- By the time you end this course you will have learned how to save time, money and you will be able to service your customers more efficiently
- **Call your Sales Rep asap to book this course now**



UNIFORM FABRICS



300-00H



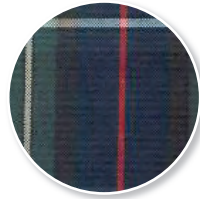
350-01B



350-01C



350-01D



300-01E



300-01F



300-02A



300-02B



350-02C



350-02E



300-02G



300-02M



300-02J



300-02V



300-03A



350-03B



350-03C



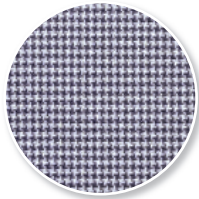
300-03D



350-03D



350-03M



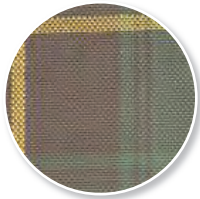
300-03N



300-04P



300-05B



300-05L



300-05Q



300-06A



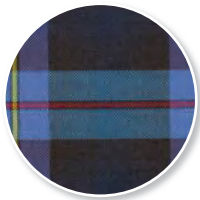
300-06T



300-07A



300-08B



300-09A



350-003



350-008



300-020



300-21P



300-024



300-025



300-026



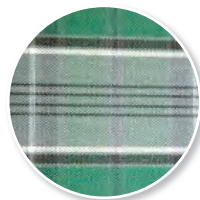
350-027



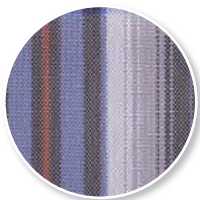
300-028



300-029



300-030



300-031

UNIFORM FABRICS



300-032



300-033



350-034



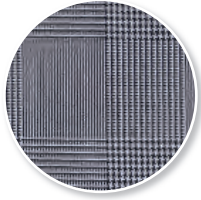
350-035



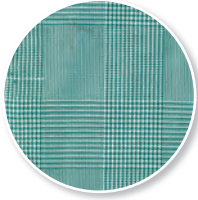
300-036



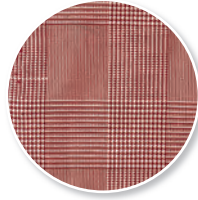
350-037



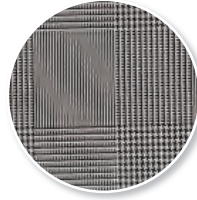
300-038



300-38G



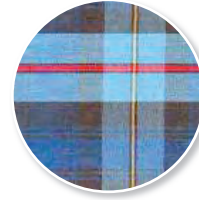
300-38M



300-039



350-040



350-041



300-042



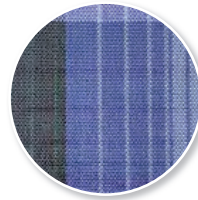
300-043



300-044



300-045



300-046



300-047



300-048



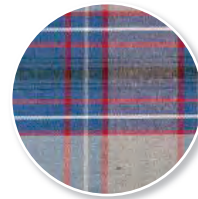
350-049



300-050



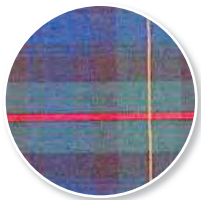
350-052



350-053



350-054



350-055



300-056



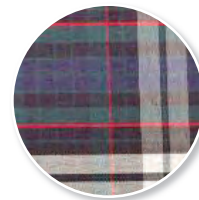
350-057



350-058



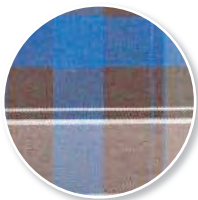
350-059



350-060



300-061



350-062



300-063



300-064



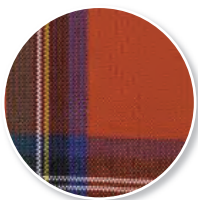
350-065



300-066



300-68R



300-068



300-069



300-070

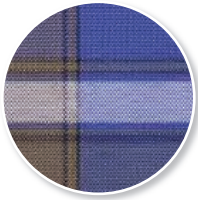


350-071



300-072

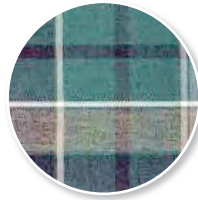
UNIFORM FABRICS



300-073



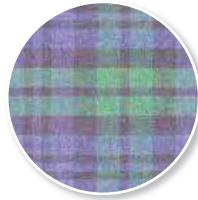
350-074



350-075



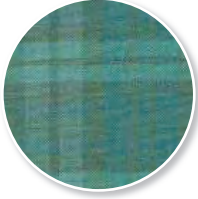
350-076



350-077



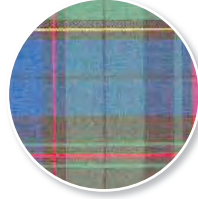
350-078



300-079



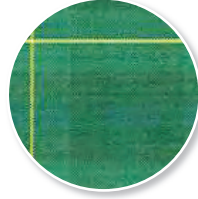
350-080



350-081



300-082



300-083



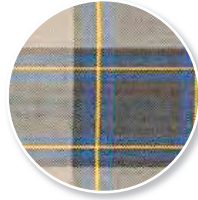
300-084



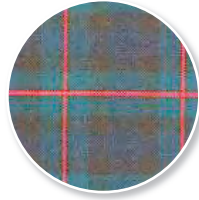
300-085



350-086



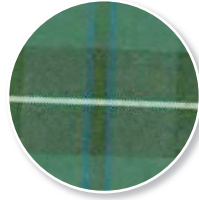
300-087



300-088



300-089



300-090



300-091



300-092



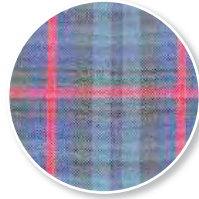
300-093



300-094



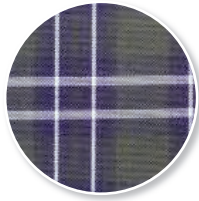
300-096



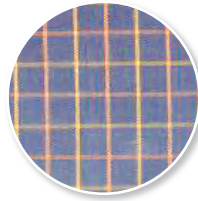
300-098



350-107



350-116



350-403



350-410



350-437



350-500



300-501



300-525



300-550



300-578



300-603



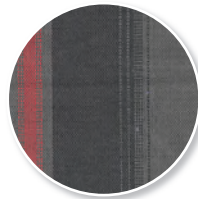
300-686



300-678



300-965



300-APU



300-C02



350-G1A



300-IDL

UNIFORM FABRICS



300-KN1



300-0KG



300-KW1



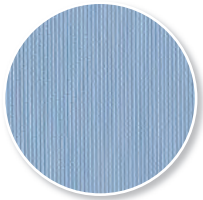
350-NC3



300-OSS



350-02T



350-2BC



350-2PC



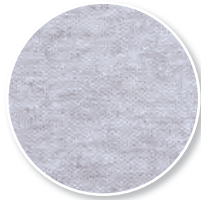
350-2YL



300-CGC



350-FGC



Ash Grey (030)



Black (001)



Blue



Bright Navy (430)



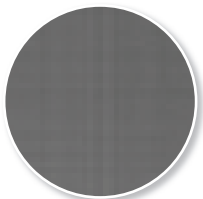
Brown



Burgundy



Cardinal (620)



Charcoal



Corn (750)



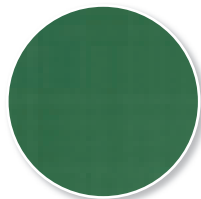
Dark Green



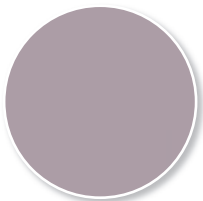
Fuchsia (670)



Gold (710)



Green



Grey



Heather Grey



Hunter (300)



Khaki



Light Blue (450)



Lime (322)



Maize (740)



Navy



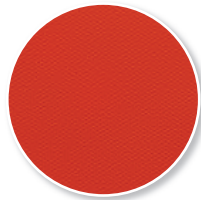
Orange (810)



Pink (660)



Purple (520)



Red (610)



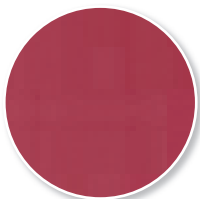
Royal (431)



Turquoise (440)



White (100)



Wine (640)



Yellow (720)

PANTS SIZE CHART

BOYS

Toddler (Expand-A-Waist, Double Knee)

SIZE	2	3	4
Waist	20 1/2	21	21 1/2
Inseam Pants	12 1/2	14	15 1/4
Inseam Shorts	7 1/4	7 3/8	7 1/2

Regular Sizes 3-16 (Expand-A-Waist, Double Knee, 2 Inch Hem)

SIZE	3	4	5	6	7	8	9	10	11	12	14	16
Waist	21 1/2	22	22 1/2	23	23 1/2	24	24 1/2	25	25 1/2	26	27	28
Inseam Pants	14 1/2	16	17 1/2	19 1/2	20	21 1/2	23 1/2	24	25	26 1/2	28	29 1/2
Inseam Shorts	7 3/8	7 1/2	7 3/4	8	8 1/4	8 1/4	8 1/2	8 3/4	9	9 1/4	9 1/2	9 3/4

Slim Sizes 3-16 (Expand-A-Waist, Double Knee, 2 Inch Hem)

SIZE	3	4	5	6	7	8	9	10	11	12	14	16
Waist	19 1/2	20	20 1/2	21	21 1/2	22	22 1/2	23	23 1/2	24	25	26
Inseam Pants	14 1/2	16	17 1/2	19 1/2	20	21 1/2	23 1/2	24	25	26 1/2	28	29 1/2
Inseam Shorts	7 3/8	7 1/2	7 3/4	8	8 1/4	8 1/4	8 1/2	8 3/4	9	9 1/4	9 1/2	9 3/4

Husky Sizes 25-40 (Expand-A-Waist, Double Knee, 2 Inch Hem)

Waist	25	26	27	28	29	30	31	32	33	34	36	38	40
Inseam Pants	20 1/2	21 1/2	22 1/2	24	25 1/2	27	27 1/2	28 1/2	29 1/2	29 1/2	30 1/2	31	32 1/4
Inseam Shorts	8 1/4	8 3/8	8 1/2	8 5/8	8 3/4	8 7/8	9	9 1/8	9 1/4	9 3/8	9 5/8	9 7/8	10 1/8

Preps (2 Inch Hem)

Waist	28	29	30	31	32
Inseam Pants	*	*	*	*	*
Inseam Shorts	9	9 1/2	10 1/4	10 1/4	10 3/4

*Available in Open Bottom, 30L, 32L, 34L

Student - Mens

Waist	33	34	36	38	40	42	44
Inseam Pants Open Bottom	*	*	*	*	*	*	*
Inseam Shorts	10 3/4	10 3/4	10 3/4	10 3/4	10 3/4	10 3/4	10 3/4

*Available in Open Bottom, 30L, 32L, 34L

Regular

SIZE	4	5	6	6x
Waist	22	22 1/2	23	23 1/2
Inseam Pants	16 1/2	18	19 1/2	20 1/2
Inseam Shorts	5	5	5	5

Regular

SIZE	7	8	10	12	14	16
Waist	24	24 5/8	25 1/2	26 1/2	28	29
Inseam Pants	23	24	25 1/2	26 1/2	28	29
Inseam Shorts	6	6 1/2	6 5/8	7	7 3/8	7 3/4

Slim

SIZE	7	8	10	12	14	16
Waist	21 1/2	22	23	24 1/2	25 1/2	26 1/2
Inseam Pants	23	24	25 1/2	26 1/2	28	29
Inseam Shorts	6	6 1/2	6 5/8	7	7 3/8	7 3/4

Junior

SIZE	3	5	7	9	11	13	15	17	19	21	23	25	27
Waist	24 1/2	25 1/2	26 1/2	27 1/2	29	30	32	33 1/2	35	36 1/2	38	39 1/2	41
Inseam Pants	30 1/2	30 1/2	30 1/2	30 1/2	30 1/2	30 1/2	31 1/2	31 1/2	31 1/2	31 1/2	31 1/2	31 1/2	31 1/2
Inseam Shorts	8 1/2	8 1/2	8 1/2	8 1/2	8 1/2	8 1/2	8 1/2	8 1/2	9	9	9	9	9

Half

SIZE	6 1/2	7 1/2	8 1/2	10 1/2	12 1/2	14 1/2
Waist	28	28 1/2	29 1/2	30 1/2	32	33 1/2
Inseam Pants	22	23	25	27	29	30
Inseam Shorts	7 1/2	7 1/2	7 1/2	7 1/2	7 1/2	7 1/2

Garment Measurements Vary By Style

GIRLS JUMPERS & SKIRTS

REGULAR

	3	4	5	6	6x	7	8	10	12	14	16	18
WAIST	20	21	22	23	24	24	24 ½	25 ½	26 ½	28	29 ½	31
HIPS	26 ½	27 ½	28 ½	29 ½	30 ½	30 ½	31 ½	32 ½	33 ½	35	36 ½	38 ½
SKIRT LENGTH	12	13	14	15	16	17	18 ½	19 ½	20	20 ½	21	21 ½
NECK TO WAIST	9	9 ½	10	10 ½	11	11 ½	12	13	13 ½	14 ½	15 ½	16 ½
FULL LENGTH	21	22 ½	24	25 ½	27	28 ½	30 ½	32 ½	33 ½	35 ½	36 ½	37 ½
BUST	24	25	26	27	27 ½	28	29	30	31 ½	33	34	35

HALF SIZES

	7½	8½	10½	12½	14½	16½	18½
WAIST	28 ½	29 ½	30 ½	32 ½	33 ½	35 ½	36 ½
HIPS	35	36	37	38 ½	40	41 ½	43
SKIRT LENGTH	17	18 ½	19 ½	20	20 ½	21	21 ½
NECK TO WAIST	11	12	13	13 ½	14 ½	15	15 ½
FULL LENGTH	28 ½	30 ½	32 ½	33 ½	35	36	37
BUST	32	33	34	35 ½	37	38 ½	40

TEEN REGULAR SIZES

	2T	4T	6T	8T	10T	12T	14T	16T	18T	20T
WAIST	21	22	23	24	25	26	27	29	31	33
HIPS	31	32	33	34	35 ½	37	38 ½	40	42	44
SKIRT LENGTH	22	22	22	22	22	22	22	22	22	22
NECK TO WAIST	14 ½	14 ½	15	15	15 ½	15 ½	16	16	16 ½	17
FULL LENGTH	36 ½	36 ½	37	37	37 ½	37 ½	38	38	38 ½	39
BUST	31	32	33	34	35	36	37 ½	39	41	43

TEEN HALF SIZES

	8T.5	10T.5	12T.5	14T.5	16T.5	18T.5	20T.5
WAIST	31 ½	33	34 ½	36	37 ½	39 ½	41 ½
HIPS	42 ½	44	45 ½	47	48 ½	50	51 ½
SKIRT LENGTH	25	25	25	25	25	25	25
NECK TO WAIST	15 ½	15 ½	15 ½	16	16	16 ½	16 ½
FULL LENGTH	40 ½	40 ½	40 ½	41	41	41 ½	41 ½
BUST	40	40 ½	43	44 ½	46 ½	48 ½	50

All above measurements are body measurements. Garment measurements vary by style.
 Teen Long-Add 3" to teen measurements.

BLAZER SIZE CHART

4-7 REGULAR

	4	5	6	7
HALF WAIST	13 $\frac{7}{8}$	14 $\frac{3}{8}$	14 $\frac{7}{8}$	15 $\frac{3}{8}$
CHEST BUTTONED	26 $\frac{3}{4}$	27 $\frac{3}{4}$	28 $\frac{3}{4}$	29 $\frac{3}{4}$
BACK LENGTH	17	18 $\frac{1}{8}$	19 $\frac{1}{4}$	20 $\frac{3}{8}$
SH. TO SH. POINT	12 $\frac{1}{2}$	12 $\frac{3}{4}$	13	13 $\frac{1}{4}$
SLEEVE INSEAM	8 $\frac{1}{2}$	9 $\frac{1}{2}$	10 $\frac{1}{2}$	11 $\frac{1}{2}$
SLEEVE BOTTOM	8 $\frac{3}{4}$	9	9 $\frac{1}{4}$	9 $\frac{1}{2}$

8-20 REGULAR

	8	10	12	14	16	18	20
HALF WAIST	16 $\frac{3}{4}$	17 $\frac{3}{8}$	18	18 $\frac{5}{8}$	19 $\frac{1}{4}$	19 $\frac{7}{8}$	20 $\frac{1}{2}$
CHEST BUTTONED	32	33 $\frac{1}{2}$	35	36 $\frac{1}{2}$	37 $\frac{3}{4}$	39 $\frac{1}{2}$	40 $\frac{1}{2}$
BACK LENGTH	21 $\frac{3}{8}$	23 $\frac{1}{4}$	24 $\frac{1}{2}$	25 $\frac{1}{4}$	26 $\frac{1}{4}$	27 $\frac{3}{8}$	28 $\frac{5}{8}$
SH. TO SH. POINT	14 $\frac{7}{8}$	15 $\frac{1}{2}$	16 $\frac{1}{8}$	16 $\frac{3}{4}$	17 $\frac{1}{4}$	17 $\frac{3}{4}$	18 $\frac{1}{4}$
SLEEVE INSEAM	11 $\frac{5}{8}$	12 $\frac{3}{8}$	13 $\frac{1}{2}$	13 $\frac{3}{8}$	15 $\frac{3}{8}$	15 $\frac{3}{4}$	16 $\frac{1}{2}$
SLEEVE BOTTOM	9 $\frac{7}{8}$	10 $\frac{1}{8}$	10 $\frac{3}{8}$	10 $\frac{3}{4}$	11	11 $\frac{1}{4}$	11 $\frac{1}{2}$

8-20 HUSKY

	8	10	12	14	16	18	20
HALF WAIST	17 $\frac{1}{2}$	18 $\frac{1}{8}$	18 $\frac{3}{4}$	19 $\frac{5}{8}$	20 $\frac{1}{4}$	20 $\frac{7}{8}$	21 $\frac{1}{2}$
CHEST BUTTONED	33	34 $\frac{1}{2}$	36	37 $\frac{1}{2}$	38	40 $\frac{1}{2}$	42
BACK LENGTH	21 $\frac{1}{8}$	22 $\frac{3}{8}$	23 $\frac{1}{2}$	24 $\frac{3}{4}$	26	27 $\frac{1}{4}$	28 $\frac{3}{4}$
SH. TO SH. POINT	15 $\frac{1}{8}$	15 $\frac{3}{4}$	16 $\frac{3}{8}$	17	17 $\frac{1}{2}$	18	18 $\frac{1}{2}$
SLEEVE INSEAM	11 $\frac{3}{8}$	12 $\frac{3}{8}$	13 $\frac{3}{8}$	14 $\frac{1}{4}$	15 $\frac{1}{4}$	15 $\frac{5}{8}$	16
SLEEVE BOTTOM	10 $\frac{5}{8}$	10 $\frac{7}{8}$	11 $\frac{1}{8}$	11 $\frac{3}{8}$	11 $\frac{3}{4}$	12	12 $\frac{1}{4}$

36-56 STUDENT

	36	38	40	42	44	46	48	50	52	54	56
HALF WAIST	19 $\frac{1}{2}$	18 $\frac{1}{8}$	18 $\frac{3}{4}$	22 $\frac{1}{2}$	23 $\frac{1}{2}$	24 $\frac{1}{2}$	25 $\frac{1}{2}$	26 $\frac{1}{2}$	27 $\frac{1}{2}$	28 $\frac{1}{2}$	29 $\frac{1}{2}$
CHEST BUTTONED	39	41	43	45	47	49	50	52	54	56	58
BACK LENGTH	30 $\frac{1}{4}$	30 $\frac{1}{2}$	30 $\frac{3}{4}$	31	31 $\frac{1}{4}$	31 $\frac{1}{2}$	31 $\frac{3}{4}$	32	32 $\frac{1}{4}$	32 $\frac{1}{2}$	32 $\frac{3}{4}$
SH. TO SH. POINT	17 $\frac{3}{4}$	18 $\frac{1}{4}$	18 $\frac{3}{4}$	19 $\frac{1}{4}$	19 $\frac{3}{4}$	20 $\frac{1}{4}$	20 $\frac{3}{4}$	21 $\frac{1}{4}$	21 $\frac{3}{4}$	22 $\frac{1}{4}$	22 $\frac{3}{4}$
BACK WIDTH	16 $\frac{7}{8}$	17 $\frac{3}{8}$	17 $\frac{7}{8}$	18 $\frac{3}{8}$	18 $\frac{7}{8}$	19 $\frac{3}{8}$	19 $\frac{7}{8}$	20 $\frac{3}{8}$	20 $\frac{7}{8}$	21 $\frac{3}{8}$	21 $\frac{7}{8}$
SLEEVE INSEAM	17	17	17	17	17	17	17	17	17	17	17
SLEEVE BOTTOM	11	11 $\frac{1}{4}$	11 $\frac{1}{2}$	11 $\frac{3}{4}$	12	12 $\frac{1}{4}$	12 $\frac{1}{2}$	12 $\frac{3}{4}$	13	13 $\frac{1}{4}$	13 $\frac{1}{2}$

GIRLS & LADIES

GIRLS	4	6	8	10	12	14	16	18	20
CHEST	25 $\frac{1}{4}$	27 $\frac{1}{2}$	29 $\frac{1}{2}$	31	32 $\frac{1}{2}$	34	36	37 $\frac{1}{2}$	39
WAIST	24 $\frac{1}{4}$	26 $\frac{1}{4}$	28 $\frac{1}{4}$	29 $\frac{3}{4}$	31 $\frac{1}{4}$	33	34 $\frac{3}{4}$	36 $\frac{1}{2}$	37 $\frac{3}{4}$

LADIES	2	4	6	8	10	12	14	16	18	20	22	24	26	28
CHEST	31 $\frac{1}{2}$	32 $\frac{1}{2}$	33 $\frac{1}{2}$	34 $\frac{1}{2}$	35 $\frac{1}{2}$	37	38 $\frac{1}{2}$	40	42	45 $\frac{1}{2}$	47 $\frac{1}{2}$	49 $\frac{1}{2}$	51 $\frac{1}{2}$	53 $\frac{1}{2}$
WAIST	23 $\frac{1}{2}$	24 $\frac{1}{2}$	25 $\frac{1}{2}$	26 $\frac{1}{2}$	27 $\frac{1}{2}$	29	30 $\frac{1}{2}$	32	34	37 $\frac{1}{2}$	39 $\frac{1}{2}$	41 $\frac{1}{2}$	43 $\frac{1}{2}$	45 $\frac{1}{2}$

KAYNEE SIZE CHART & COLOR GUIDE

Correct Size Size	If your measurement is no more than...				Correct Size		Chest	Waist
	Neck	Chest	Waist		Knits			
Boys 4	11"	24"	24"		Youth XXX Small (3)	23"	23"	
Boys 5	11"	25"	25"		Youth XX Small (4)	25"	25"	
Boys 6	11½"	26"	26"		Youth X Small (6)	27"	27"	
Boys 7	11½"	27"	27"		Youth Small (7-8)	30"	30"	
					Youth Medium (10-12)	34"	34"	
Boys 8	11½"	28"	28"		Youth Large (14-16)	37"	37"	
Boys 10	12"	30"	30"		Youth XLarge (18-20)	38½"	38½"	
Boys 12	12½"	32"	32"					
Boys 14	13"	34"	34"		Adult Small	39"	39"	
Boys 16	13½"	35½"	35½"		Adult Medium	43"	43"	
Boys 18	14"	37"	37"		Adult Large	47"	47"	
Boys 20	14½"	38½"	38½"		Adult X Large	51"	51"	
					Adult 2X Large	55"	55"	
Husky 10	13"	34"	34"		Adult 3X Large	59"	59"	
Husky 12	13½"	35½"	35½"					
Husky 14	14"	37½"	37½"		Fitted Knit Shirts			
Husky 16	14½"	39½"	39½"		Size	Chest	Waist	
Husky 18	15"	40½"	40½"		Youth Small	35½"	34½"	
Husky 20	15½"	42"	42"		Youth Medium	38½"	37½"	
					Youth Large	41½"	40½"	
Mens Small	14½"	39½"	36"		Youth XLarge	44½"	43½"	
Mens Medium	15½"	43½"	40"		Youth 2XLarge	45½"	44½"	
Mens Large	16½"	47½"	44"					
Mens X Large	17½"	51½"	48"		Adult XXX Small	25	24	
Mens 2X Large	18½"	55½"	52"		Adult XX Small	27	26	
Mens 3X Large	19½"	59½"	56"		Adult Small	29	28	
					Adult Medium	31	30	
Girls 4	11"	23¾"	22¾"		Adult Large	33	32	
Girls 5	11"	24¾"	23¾"		Adult X Large	34½"	33½"	
Girls 6	11½"	25¾"	24¾"					
Girls 6x	11½"	26¾"	25¾"		Short Inseams	Waist	Length	
					XX Small		3½"	
Girls 7	11¾"	29½"	26½"		X Small		4½"	
Girls 8	12"	31"	28"		Small		5½"	
Girls 10	12½"	32½"	29½"		Medium		7"	
Girls 12	13"	34"	31"		Large		7½"	
Girls 14	13½"	35½"	32½"		X Large		7¾"	
Girls 16	14"	37"	34"		Adult All Sizes		8½"	
					Color Codes			
Ladies 28-30/XS	14½"	37½"	37½"		Color Name	Code #	Color Name	Code #
Ladies 32-34/SM	15½"	40½"	40½"		Black	BLK	Red	RED
Ladies 36-38/MED	16½"	44"	44"		Ash	ASH	Cardinal	CRD
Ladies 40-42/LG	17½"	48"	48"		White	WHT	Wine	BRG
Ladies 44-46/XL	18½"	52"	52"		Hunter	HTR	Pink	PNK
Ladies 48-50/XXL	19½"	56"	56"		Lime	LIM	Fuchsia	FSH
Ladies 52-54/XXXL	20"	58"	58"		Bright Navy	BNV	Gold	GLD
					Royal	ROY	Yellow	YEL
					Turquoise	TRQ	Maize	MAZ
					Light Blue	LBL	Corn	CRN
					Purple	PRP	Orange	ORG
							Navy	NVY



Who We Are

For more than 125 years, RK has manufactured and sold school uniforms and apparel to students and adults. During that time we've earned a reputation for pleasing customers with our high quality clothing and unsurpassed service and value. Our on-time deliveries and dedication to customer service makes RK the preferred choice for schoolwear.

Where Customers Come First

At RK, customer service and satisfaction is more than just a phrase. It forms the foundation of who we are and everything we do. Our knowledgeable representatives, management team and task force are committed to a standard of excellence – providing our customers with fashionable, durable and affordable apparel that's delivered without delay.

A Wide Range of Choices

We offer a wide selection of boys and girls school apparel and accessories in a variety of sizes, styles, colors and plaids. Our clothing lines include woven shirts, polos, pants, shorts, blazers, jumpers, skirts and more. For customized uniforms and apparel we offer customers a state-of-the-art screen print and embroidery process.

Socially Responsible...Environmentally Minded

RK is committed to embracing business practices that promote socially responsible and eco-friendly methods. We carefully manage and monitor our entire production process. Our factories are certified by Worldwide Responsible Accredited Production (WRAP), an independent, global non-profit organization dedicated to the certification of facilities engaged in lawful, humane and ethical production environments.



WORLDWIDE RESPONSIBLE ACCREDITED PRODUCTION

ISO 14001 Certification

RK is committed to reducing waste, saving energy, reusing and recycling materials and promoting environmentally sustainable growth. We are proud to be one of the first apparel manufacturing companies in the United States to gain ISO 14001 certification. This means we follow internationally recognized standards for controlling and improving our environmental impact and improving environmental performance.

By adhering to ISO 14001 standards, we produce environmentally progressive objectives and design management programs to achieve them. Some of the steps we take at RK to promote eco-friendly practices include:

- Using recycled shipping materials whenever possible
- Reducing landfill waste through recycling
- Installing energy-saving electrical fixtures in our warehouse and offices
- Introducing renewable fabrics in our clothing lines
- Reducing our carbon footprint through less travel and combined shipments
- Offering earth friendly tips and information in our employee newsletters



Sales & Customer Service



Les Becker
LesBecker@rkuniform.com



David Reif
DReif@rkuniform.com



Steve Royal
SRoyal@rkuniform.com



Steve Viola
SViola@rkuniform.com

24732 N. 76th Place
Scottsdale, AZ 85255
Phone 480-473-4853
Fax 480-473-4854



Lester Reif
LReif@rkuniform.com

308 Pebble Beach Drive
Mebane, NC 27302
Phone 336-214-2865
Fax 888-906-3132

Phone 860-677-7207
Fax 860-677-5797



Ana Ramirez
AnaRamirez@rkuniform.com

14-25 Plaza Road Suite S-2-5
Fair Lawn, NJ 07410
Phone 201-796-8101
Fax 866-496-0221

RK Customer Service Warehouse



Maria Goodhand
MGoodhand@astroapparel.com

300 Brook Street
Scranton, PA 18505
Phone 1-570-343-6708
Fax 1-570-343-4042



Charles Comins
CComins@rkuniform.com

PO Box 6041
Cincinnati, OH 45206
Phone 1-800-5Kaynee
Fax 1-888-676-1948



Mike Hertz
MHertz@rkuniform.com

28590 Guinivere Way
Bonita Springs, FL 34135
Phone 631-486-2157
Fax 866-352-5552

