

# Red Light Face Mask

USER MANUAL



BON CHARGE



# Welcome

Congratulations on receiving your very own Bon Charge Red Light Face Mask. Before using your Red Light Face Mask, please read this User Manual in detail.

The Red Light Face Mask has been designed with your safety in mind. However, it's important to follow basic safety protocols when using this device.

## Benefits

When used consistently the Red Light Face Mask help reduce the appearance of fine lines/wrinkles, scars and blemishes, help even out skin tone, reduce redness promote younger looking skin.

By combining both Near Infrared Light at 850nm and Red Light at 630nm we have provided the best frequencies of light for you to achieve the most optimal results.

# Key Points

## Activating Your Infrared Red Light Face Mask

Your Red Light Face Mask comes with everything you need to get started. You are about to experience some epic benefits. For the best possible results, it is highly recommended you read this manual prior to using your Red Light Face Mask for the first time.

## Photosensitivity Test

It is very important to do a photosensitivity test prior to using your Red Light Face Mask. Turn on your Red Light Face Mask and switch on the NIR and Red-Light settings. Shine the light on an exposed part of your forearm, about 1 inch away, for 2 minutes. If you experience any discomfort or redness on your skin, you must not use your Red Light Face Mask until you have sought professional advice from your doctor or healthcare provider.

## Usage Instructions

When using the Red Light Face Mask we would recommend using on your face only. We recommend a minimum of 10 minutes per session.

## Multiple Usages

Red Light Face Mask sessions works best when used consistently. The best results will be seen from daily use but as a minimum it is recommend using your Red Light Face Mask at least 3 times a week.

## What to Expect

Depending on which settings you use you can enjoy the following benefits, when used consistently.

- Boosted complexion
- Glowing skin
- Less wrinkles and fine lines
- Reduced skin redness
- Firmer, tighter skin
- Less puffiness
- Younger looking skin

# Setting Up and Using Your Red Light Face Mask

## What's in the Box?

1 x Red Light Face Mask	1 x Controller
1 x Set of Fastening Straps	1 x Deluxe Storage Pouch
2 x Eye Cups	1 x USB Cable



## How to Operate your Red Light Face Mask

### Step 1

Remove the controller and the USB cable. Connect the two together. Connect the USB end into a plug and then into a power outlet.

Switch the power outlet on and charge the controller until you achieve 3 solid bars as shown below:



## Step 2

Remove the Red Light Face Mask and Fastening Straps from the box.

Remove the protective plastic sticker from the back of your Red Light Face Mask.



Attach the Fastening Straps to the Red Light Face Mask as shown below.



## Step 3

Insert the Eye Cups into the eye cavities as shown below.



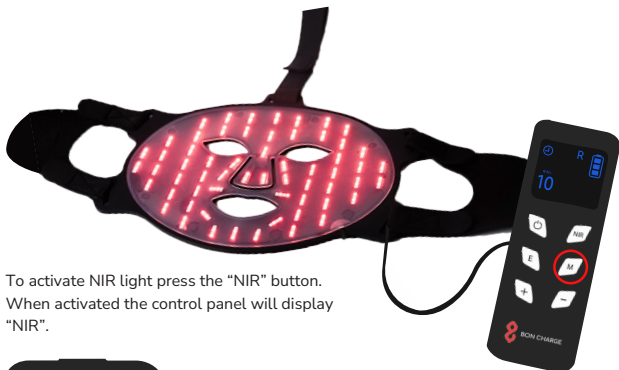
## Step 4

Connect the Red Light Face Mask to the Controller, please ensure the cable is pushed firmly into the controller, you will hear a click when this is in place. Switch on the power button by pressing it firmly.

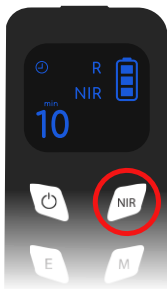


## Step 5

Select Red or Near Infrared Light before your session. You can also use both at the same time. To activate red light, click the "M" button on the controller. When activated the control panel will display the letter "R" and the LEDs will light up red.



To activate NIR light press the "NIR" button. When activated the control panel will display "NIR".

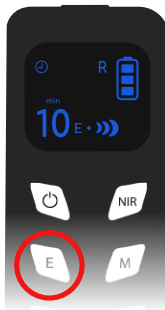


Note: NIR light is invisible so the Mask will not light up, this is normal, and the product is not faulty.

When both Red and Near Infrared Light are activated together, the control panel will display "R" and "NIR".

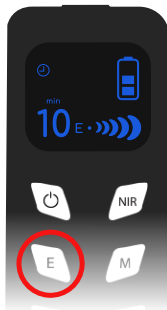
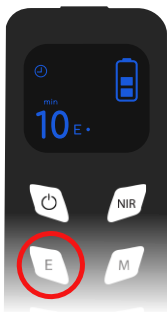
To increase the irradiance (power intensity) of each session press the "E" button. There are 3 power settings. The default setting is activated once the product is switched on and will display the "E." symbol on the display screen, which signals a low intensity.

Press the E button once and two wave symbols will light up, which signals medium intensity.





Press the E button again and 4 wave symbols will light up, this signals high intensity.

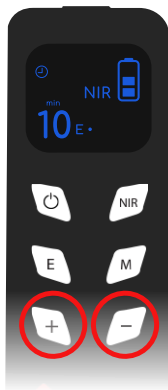


Press the E button a third time and the intensity will revert back to low.

#### Step 6

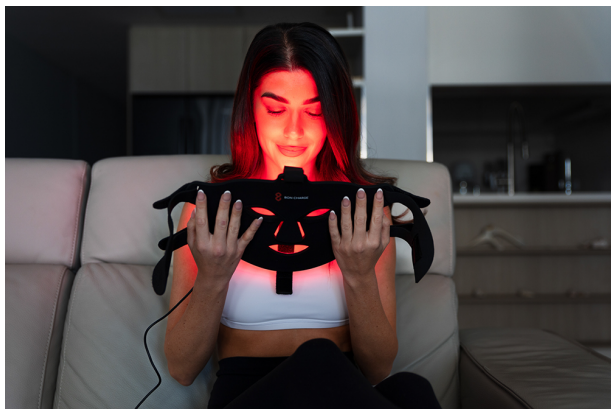
Select the time you would like to use your Red Light Face Mask for. To increase time press T+. To decrease time press T-

Time increases and decreases in 5 minute intervals, starting at a minimum session of 10 minutes. We recommend at least 10 minutes per session for optimal results. The longer the session, the better the results. Do not exceed 30 minutes in one session.



## Step 7

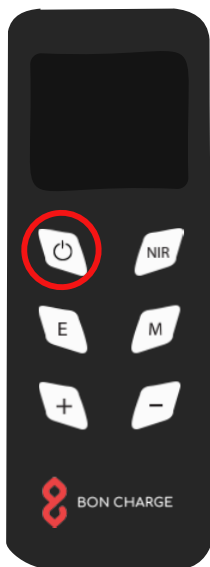
Place the Red Light Face Mask on your face and fasten the straps around the back of your head. You can tighten and loosen the straps by giving or tacking slack out of them using the Velcro straps. Enjoy your session!



## Step 8

Remove the Red Light Face Mask and switch the power button off by clicking it firmly once.

Run a damp cloth over the inside of the mask to keep it clean. Once the mask has cooled down, store away in the carry case provided.



# Frequently Asked Questions

## How Do I Clean My Mask?

You should clean your mask after each use. Only use a water based wipe or damp cloth to clean your Red Light Face Mask.

## How Do Charge the Battery?

1. Choose a plug-type socket adaptor for your country.
2. Insert the USB-C charging cable into the controller.
3. Plug the other end into the plug type socket.
4. The 3 lights on the controller will start flashing. This shows you the level of charge.
5. When all 3 lights are lit up, the mask is fully charged.

\*Do not have the Face Mask attached to the controller when charging. This may damage your mask and invalidate your warranty. Do not wear the Face Mask whilst it is being charged.

## Not All LEDs are Lighting Up

Your Red Light Face Mask contains Red Light LEDs and Near Infrared Light LEDs. Red Light is a visible frequency of light and can be detected by your eyes. Near Infrared Light is an invisible frequency of light that cannot be detected by the eyes.

The Near Infrared Light LEDs will NOT light up on your mask, but they are in fact working. We will be able to see this by looking at the control panel on your controller. When Near Infrared Light is activated, the display will illuminate the letters "NIR".

# Technical Specifications

Model	Bon Charge Red Light Face Mask
External Box Size	16.9 inches (43cm) x 9.0 inches (23cm) x 1.77 inches (4.5cm)
Time Settings	10/15/20/25/30 minutes
Light Wavelengths	630nm Red - 850nm Near Infrared
LEDs	240pcs
Warranty	1 Year
Flicker	<0.1%
Certification	CE
Material	Grade-A Silicone
Weight	11 oz (320g)
EMF Radiation	0 mG
Temperature	32-104 Fahrenheit (0-40 Centigrade)

# Warnings & Cautions

## Medical Warning

Consultant your doctor or physician before using this device.

## Safety

- Do not stare directly into the LEDs or its reflection in the mirror. This can cause temporary irritation to the eyes.
- Do not allow children to use the device unsupervised or without clearance from your medical practitioner.
- Do not wear the Face Mask whilst it is charging
- This device is an electrical device and to avoid electric shocks you must adhere to the following:
  - Do not drop the device in liquid.
  - Do not wash this device with any liquids.
  - Do not touch with wet hands.
  - Do not use the device on wet or damp skin.
  - Do not tug or pull on the charging cable when charging the device.
  - Do not use the device if it has been dropped, left outside, or exposed to liquids.
  - Do not use on or near hot surfaces.
  - Do not operated near flammable or combustible products or where vapours may be present. Explosion of fire may occur.
- Do not use this device on disabled, sleeping, or unconscious people.

- Do not use this device on open wounds.
- Do not use in conjunction with salves, balms, or ointments.
- Do not modify or attempt to modify this device. Do not attempt to repair this device.
- Do not wear when you are in water.
- Do not pull, carry, or lift the Device by its cord. If the cord is damaged, do not use the Device.
- Do not store or use your Device in temperatures exceeding 130 Fahrenheit.
- Do not use your Device if it is damaged. Continuous use of a damaged Device may result in electric shock or injury
- Do not use extension cords unless they are designed to carry the total wattage of the Device being powered.
- Do not unplug by pulling directly on the cord.

## Cautions

For first time users, we recommend starting out with 2-3 minute sessions per area, and slowly working up to a 10-minute session over the course of 2-3 weeks as your body gets used to red and NIR light

BON CHARGE advises that before using your Red Light Face Mask you must seek professional doctors advise. This includes if:

- You are pregnant.
- Are taking drugs known to cause sensitivity of skin to light .
- Have any suspicious or cancerous lesions.
- Recently had a steroid injection or use topical steroids.
- Have a serious medically diagnosed condition.
- Have a heart condition or Pacemaker.

## Additional Cautions

- If you experience discomfort or have a concern about the device, stop use immediately and contact your doctor.
- For indoor use only.
- Use only equipment provided with your device.

If you have any questions, please contact us at [hello@boncharge.com](mailto:hello@boncharge.com)

## Electrical Safety

- Do not place or operate the device near to water or liquids.
- Do not place near or pour running water over device.
- This device is not to be used in the vicinity of water.
- Do not store device is temperatures exceeding 140F or 60C.
- Do not use your device if damaged, this may result in electric shock or injury.
- Do not wear the Face Mask whilst charging.



## Disclaimer

BON CHARGE Red Light Face Mask is not intended to diagnose, cure, or prevent specific diseases or medical conditions.

Our Red Light Face Mask and information contained is not intended as medical advice or a substitute for medical advice.

BON CHARGE does not intend these products to cure any physical or skin conditions solely from their use. A qualified health professional or doctor should always be consulted prior to using the products, and professional medical attention should be sought regarding any serious or life-threatening conditions.

These statements have not been evaluated by the Food and Drug Administration. This product is not intended to diagnose, treat, cure, or prevent any disease.

# Maintenance, Cleaning and Disposal

## Maintenance

- Store the device only when it has cooled down to room temperature.
- Ensure the controller is unplugged from the device before storing.
- Do not store in hot and humid conditions.
- Do not put heavy objects on the device.

## Disposal

This device must not be disposed of with your normal household rubbish. This device requires disposal via your designated waste collection point.



# Warranty and Returns

## Red Light Face Mask

### Manufacturer's Warranty (Red Light Face Mask)

BON CHARGE warrants that this device (Red Light Face Mask) will function and perform within the specifications for one year from the date of delivery.

### What does this Manufacturer's Warranty cover?

This Manufacturer's Warranty covers any defect in material or workmanship under normal use during the warranty period.

During the warranty period, BON CHARGE will repair or replace, at no charge, products or parts of a product that proves defective because of improper material or workmanship, under normal use and maintenance.

### How long does the cover last?

This Manufacturer's Warranty for Red Light Face Mask purchased from BON CHARGE is valid for one (1) year from date of purchase. A replacement Red Light Face Mask or part assumes the remaining warranty of the original Red Light Face Mask.

## What does this warranty not cover?

This Manufacturer's Warranty does not cover any problem that is caused by:

- Conditions, malfunctions or damage not resulting from defects in the material or workmanship
- Equipment that has been abused, modified, damaged, or fitted with substitute parts.

## What do you have to do?

To obtain warranty service, you must first contact us to determine the problem and the most appropriate solution for you.

## Contact details

hello@boncharge.com

2/40 King Edward Road, Osborne Park, 6017, Western Australia

If service is required, the buyer is responsible to return the device to BON CHARGE within the one (1) year warranty period.

BON CHARGE reserves the right to provide parts in different colours to the original device.

Our goods come with guarantees that cannot be excluded under the Australian Consumer Law. You are entitled to a replacement or refund for a major failure and compensation for any other reasonably foreseeable loss or damage. You are also entitled to have the goods repaired or replaced if the goods fail to be of acceptable quality and the failure does not amount to a major failure.

## Returns

The Red Light Face Mask come with a risk-free 30-day guarantee.


This 30-day period starts from the day you receive your product. If you're not satisfied with your purchase during the guarantee period, simply email [hello@boncharge.com](mailto:hello@boncharge.com) and we'll provide a hassle-free return experience. Here are some details to note:

- Return shipping will be your responsibility. We cannot be responsible for lost or damaged shipments.
- All returns or exchanges must be received in like new condition with all original accessories and packaging.
- All returns received with damaged or missing components may be subject to additional fees. If applicable, these fees will be deducted from the refunded amount.
- Returns must be postmarked before the end of the 30-day guarantee period. Returns sent after this period will not be accepted.
- A 15% restocking fee will apply for change of mind returns.



BON CHARGE

BON CHARGE  
2/40 King Edward Road  
Osborne Park  
6017  
Western Australia  
Australia

 [boncharge.com](http://boncharge.com)

 [boncharge\\_](https://www.instagram.com/boncharge_)

 [boncharge](https://www.facebook.com/boncharge)