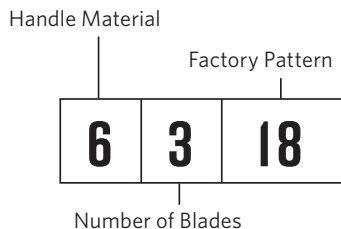


# HOW TO IDENTIFY A CASE KNIFE

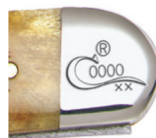
The number stamped on the tang of one blade of every Case knife identifies the pattern. The first number is the handle material, the second number is the number of blades, and the rest is the factory pattern number. In the example below, 6318 is a #18 factory pattern knife with a jugged bone handle and three blades.

## HANDLE MATERIAL KEY

- 1 . . . . . Solid Hardwoods
- 2 . . . . . Smooth Black Synthetic or Thermoplastic Rubber
- 3 . . . . . Smooth Yellow Synthetic
- 4 . . . . . Smooth Synthetic (Various Colors)
- 5 . . . . . Genuine Stag
- 6 . . . . . Smooth/Jugged Bone (Various Colors), Jugged Synthetic (Various Colors) or Jugged Laminated Hardwood
- 6.5 . . . . . 6.5 BoneStag
- 7 or P . . . . . Wood or Laminated Hardwood
- 8 . . . . . Genuine Mother-of-Pearl, Abalone or Paua
- 9 . . . . . Imitation Mother-of-Pearl or Corelon
- 10 . . . . . Micarta, G-10 or Kirinite®
- I . . . . . Ivory, Imitation Ivory or Mammoth Ivory
- EX . . . . . Exotic Materials
- M . . . . . Stainless Steel or Aluminum
- BH . . . . . Buffalo Horn



## AUTHENTIC CASE COLLECTABLES



We put the Long Tail C serialization exclusively on collectable products manufactured and sold by Case.



This logo assures you the collectable item is authorized by Case.

## DETERMINE THE YEAR OF A CASE KNIFE



In 1970, Case added ten dots beneath the U.S.A. on all knife tangs. Each year a dot was removed.



The same dating system was used during the 1980s. The differences are the "lightning" form of the letter S in Case and USA and the fact that the dots were put above the USA.



From 1990 to mid-1993, the actual date was stamped on the tang.



The dot system was used again from mid-1993 through 1999.



In 2000, Case introduced a new tang date stamp: five Xs and five dots. From 2000 through 2005, one dot was removed each year. From 2006 through 2009, an X was removed each year.



The 2010 Tang Stamp design again features five Xs and five dots. From 2010 through 2015, one dot was removed for each year. From 2016 through 2019, an X is removed each year.



The year 2020 signals the beginning of another decade of Case knives, and with it comes a brand new tang stamp design - one that recalls the early use of the "ten-dot" dating system - and the 'Case XX' marking that's become one of Case's most reassured hallmarks.