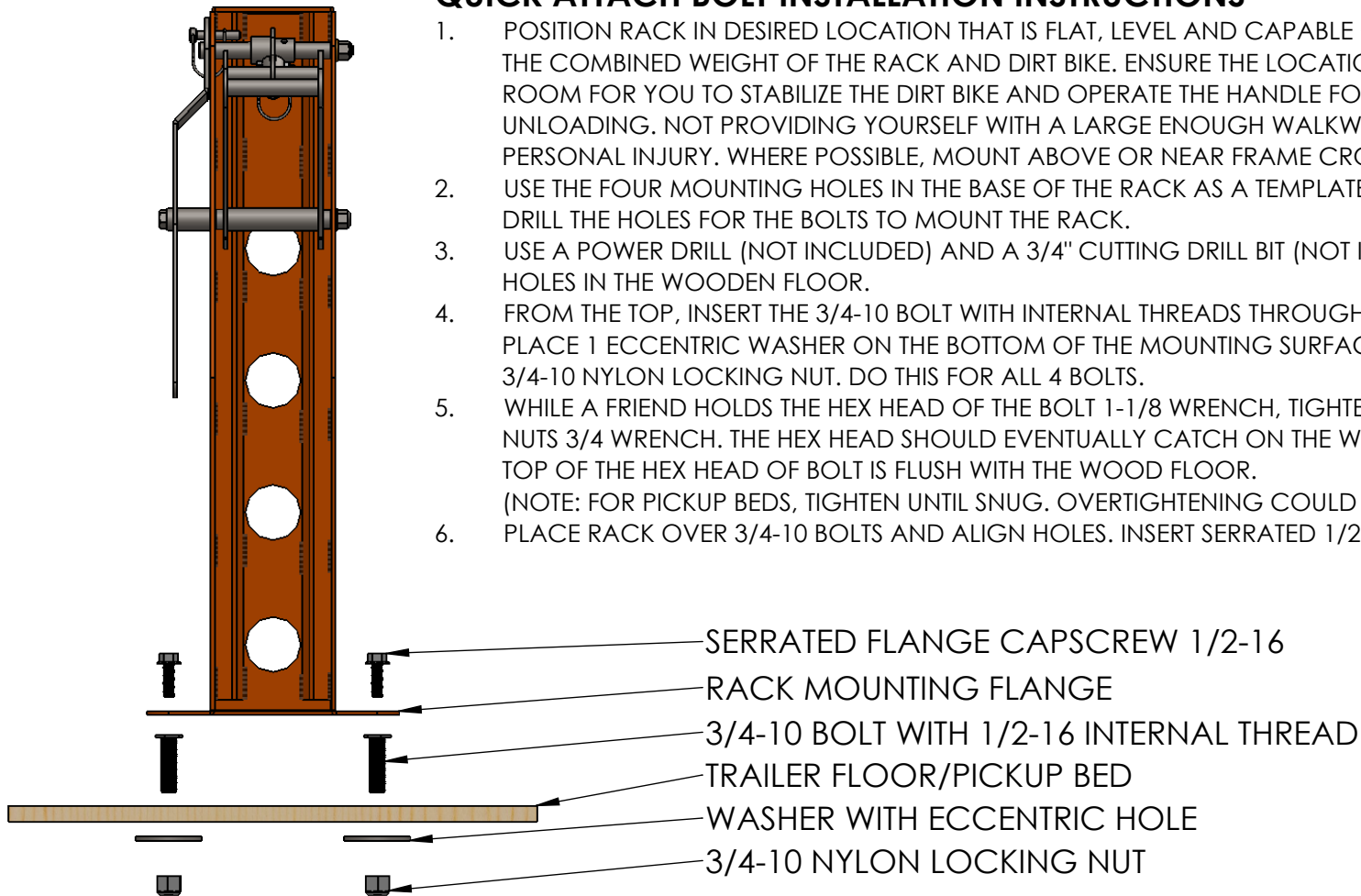


B

B

QUICK ATTACH BOLT INSTALLATION INSTRUCTIONS

1. POSITION RACK IN DESIRED LOCATION THAT IS FLAT, LEVEL AND CAPABLE OF SUPPORTING THE COMBINED WEIGHT OF THE RACK AND DIRT BIKE. ENSURE THE LOCATION ALLOWS ENOUGH ROOM FOR YOU TO STABILIZE THE DIRT BIKE AND OPERATE THE HANDLE FOR LOADING AND UNLOADING. NOT PROVIDING YOURSELF WITH A LARGE ENOUGH WALKWAY CAN RESULT IN PERSONAL INJURY. WHERE POSSIBLE, MOUNT ABOVE OR NEAR FRAME CROSS MEMBERS.
2. USE THE FOUR MOUNTING HOLES IN THE BASE OF THE RACK AS A TEMPLATE TO MARK WHERE TO DRILL THE HOLES FOR THE BOLTS TO MOUNT THE RACK.
3. USE A POWER DRILL (NOT INCLUDED) AND A 3/4" CUTTING DRILL BIT (NOT INCLUDED) TO DRILL HOLES IN THE WOODEN FLOOR.
4. FROM THE TOP, INSERT THE 3/4-10 BOLT WITH INTERNAL THREADS THROUGH THE DRILLED HOLES. PLACE 1 ECCENTRIC WASHER ON THE BOTTOM OF THE MOUNTING SURFACE AND START THE 3/4-10 NYLON LOCKING NUT. DO THIS FOR ALL 4 BOLTS.
5. WHILE A FRIEND HOLDS THE HEX HEAD OF THE BOLT 1-1/8 WRENCH, TIGHTEN THE NYLON LOCKING NUTS 3/4 WRENCH. THE HEX HEAD SHOULD EVENTUALLY CATCH ON THE WOOD. TIGHTEN UNTIL THE TOP OF THE HEX HEAD OF BOLT IS FLUSH WITH THE WOOD FLOOR.
(NOTE: FOR PICKUP BEDS, TIGHTEN UNTIL SNUG. OVERTIGHTENING COULD BEND BOX)
6. PLACE RACK OVER 3/4-10 BOLTS AND ALIGN HOLES. INSERT SERRATED 1/2-16 CAPSCREWS AND TIGHTEN.



A

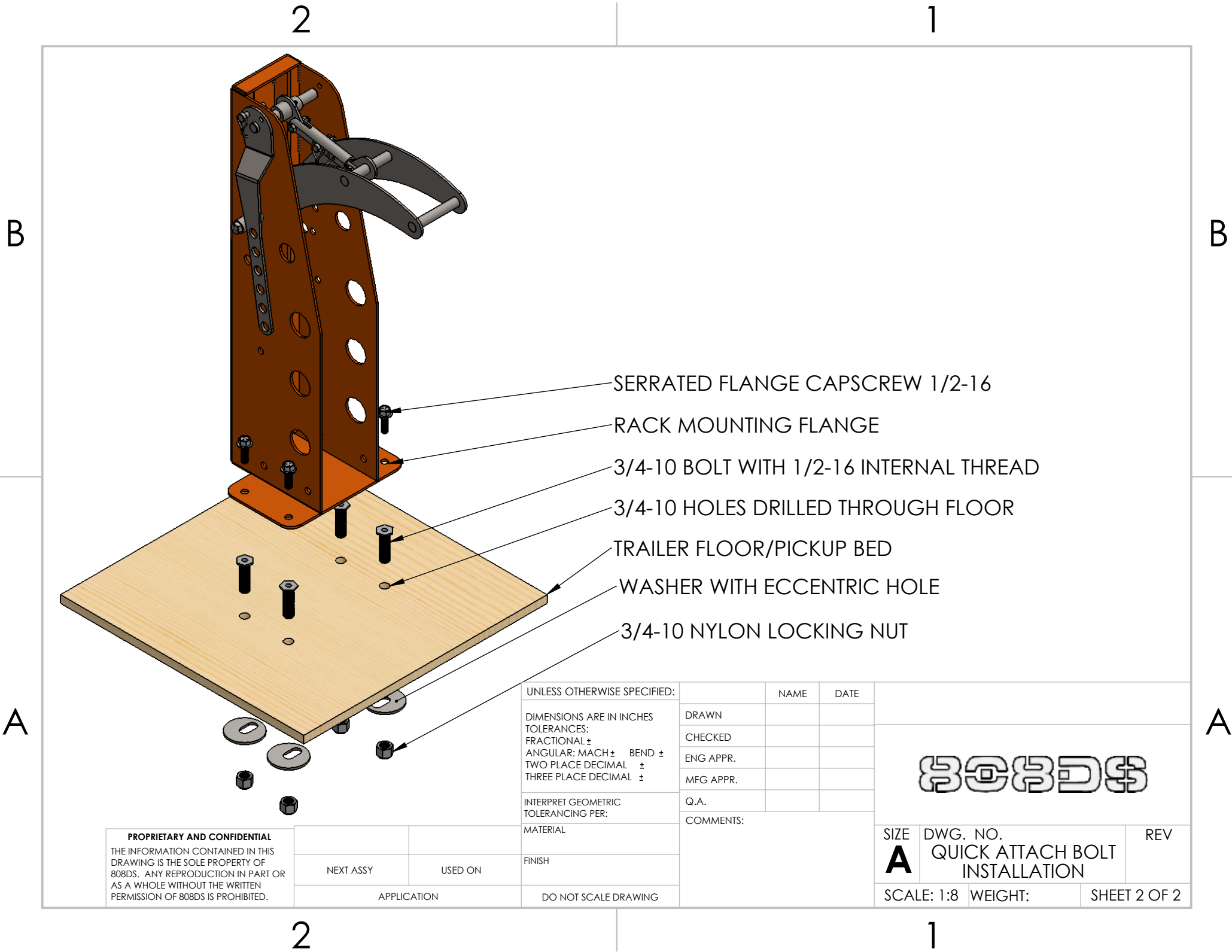
A

		UNLESS OTHERWISE SPECIFIED:		NAME	DATE
		DIMENSIONS ARE IN INCHES	DRAWN		
		TOLERANCES:	CHECKED		
		FRACTIONAL ±	ENG APPR.		
		ANGULAR: MACH ± BEND ±	MFG APPR.		
		TWO PLACE DECIMAL ±	Q.A.		
		THREE PLACE DECIMAL ±	COMMENTS:		
		INTERPRET GEOMETRIC TOLERANCING PER:			
		MATERIAL			
		FINISH			
NEXT ASSY	USED ON				
APPLICATION		DO NOT SCALE DRAWING			

PROPRIETARY AND CONFIDENTIAL
 THE INFORMATION CONTAINED IN THIS DRAWING IS THE SOLE PROPERTY OF 808DS. ANY REPRODUCTION IN PART OR AS A WHOLE WITHOUT THE WRITTEN PERMISSION OF 808DS IS PROHIBITED.



SIZE	DWG. NO.	REV
A	QUICK ATTACH BOLT INSTALLATION	
SCALE: 1:8	WEIGHT:	SHEET 1 OF 2



- SERRATED FLANGE CAPSCREW 1/2-16
- RACK MOUNTING FLANGE
- 3/4-10 BOLT WITH 1/2-16 INTERNAL THREAD
- 3/4-10 HOLES DRILLED THROUGH FLOOR
- TRAILER FLOOR/PICKUP BED
- WASHER WITH ECCENTRIC HOLE
- 3/4-10 NYLON LOCKING NUT

UNLESS OTHERWISE SPECIFIED:	NAME	DATE
DIMENSIONS ARE IN INCHES	DRAWN	
TOLERANCES:	CHECKED	
FRACTIONAL ±	ENG APPR.	
ANGULAR: MACH ± BEND ±	MFG APPR.	
TWO PLACE DECIMAL ±	Q.A.	
THREE PLACE DECIMAL ±	COMMENTS:	
INTERPRET GEOMETRIC TOLERANCING PER:		
MATERIAL		
FINISH		
APPLICATION		
DO NOT SCALE DRAWING		



PROPRIETARY AND CONFIDENTIAL
 THE INFORMATION CONTAINED IN THIS DRAWING IS THE SOLE PROPERTY OF 808DS. ANY REPRODUCTION IN PART OR AS A WHOLE WITHOUT THE WRITTEN PERMISSION OF 808DS IS PROHIBITED.

SIZE	DWG. NO.	REV
A	QUICK ATTACH BOLT INSTALLATION	
SCALE: 1:8	WEIGHT:	SHEET 2 OF 2