

# 33259

## MOUNT KIT

**Ford Super Duty F-250/350/450/550      2005 - 07**

**Installation Instructions**

**⚠ CAUTION**

Read this document before installing the snowplow.

**⚠ CAUTION**

See your sales outlet/Web site for specific vehicle application recommendations before installation. The online selection tool has specific vehicle and snowplow requirements.

**SAFETY DEFINITIONS**

**⚠ WARNING**  
 Indicates a potentially hazardous situation that, if not avoided, could result in death or serious personal injury.

**⚠ CAUTION**  
 Indicates a potentially hazardous situation that, if not avoided, may result in minor or moderate injury. It may also be used to alert against unsafe practices.

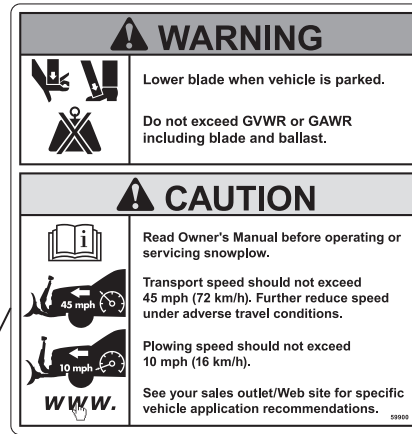
**NOTE:** Indicates a situation or action that can lead to damage to your snowplow and vehicle or other property. Other useful information can also be described.

**WARNING/CAUTION & INSTRUCTION LABELS**

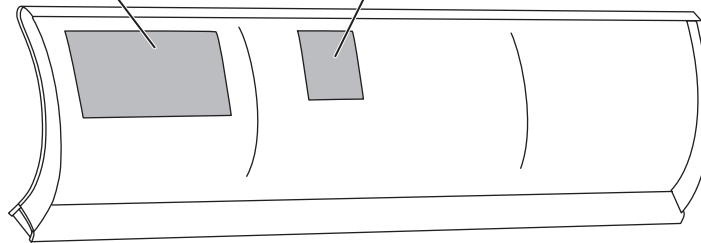
Become familiar with and inform users about the warning and instruction labels on the back of the blade.

**NOTE:** If labels are missing or cannot be read, see your sales outlet.

Warning/Caution Label



Instruction Label



## SAFETY PRECAUTIONS

Improper installation and operation could cause personal injury and/or equipment and property damage. Read and understand labels and the Owner's Manual before installing, operating or making adjustments.

### **⚠ WARNING**

**Lower the blade when vehicle is parked. Temperature changes could change hydraulic pressure, causing the blade to drop unexpectedly or damaging hydraulic components. Failure to do this could result in serious personal injury.**

### **⚠ WARNING**

**The driver shall keep bystanders clear of the blade when it is being raised, lowered or angled. Do not stand between the vehicle and the blade or within 8 feet of a moving blade. A moving or falling blade could cause personal injury.**

### **⚠ WARNING**

**Keep hands and feet clear of the blade and A-frame when mounting or removing the snowplow. Moving or falling assemblies could cause personal injury.**

### **⚠ WARNING**

**Do not exceed GVWR or GAWR including the blade and ballast. The rating label is found on the driver-side vehicle door cornerpost.**

### **⚠ WARNING**

**To prevent accidental movement of the blade, always turn the control OFF whenever the snowplow is not in use. The power indicator light will turn OFF.**

### **⚠ WARNING**

**Remove blade assembly before placing vehicle on hoist.**

### **⚠ CAUTION**

**Refer to the online selection tool for minimum vehicle recommendations and ballast requirements.**

## PERSONAL SAFETY

- Remove ignition key and put the vehicle in park or in gear to prevent others from starting the vehicle during installation or service.
- Wear only snug-fitting clothing while working on your vehicle or snowplow.
- Do not wear jewelry or a necktie, and secure long hair.
- Wear safety goggles to protect your eyes from battery acid, gasoline, dirt and dust.
- Avoid touching hot surfaces such as the engine, radiator, hoses and exhaust pipes.
- Always have a fire extinguisher rated BC handy, for flammable liquids and electrical fires.

## FIRE AND EXPLOSION

### **⚠ WARNING**

**Gasoline is highly flammable and gasoline vapor is explosive. Never smoke while working on vehicle. Keep all open flames away from gasoline tank and lines. Wipe up any spilled gasoline immediately.**

Be careful when using gasoline. Do not use gasoline to clean parts. Store only in approved containers away from sources of heat or flame.

## CELL PHONES

A driver's first responsibility is the safe operation of the vehicle. The most important thing you can do to prevent a crash is to avoid distractions and pay attention to the road. Wait until it is safe to operate Mobile Communication Equipment such as cell phones, text messaging devices, pagers or two-way radios.

## VENTILATION

### **⚠ WARNING**

**Vehicle exhaust contains lethal fumes. Breathing these fumes, even in low concentrations, can cause death. Never operate a vehicle in an enclosed area without venting exhaust to the outside.**

**NOISE**

Airborne noise emission during use is below 70 dB(A) for the snowplow operator.






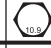


**VIBRATION**

Operating snowplow vibration does not exceed 2.5 m/s<sup>2</sup> to the hand-arm or 0.5 m/s<sup>2</sup> to the whole body.

**TORQUE CHART**

**⚠ CAUTION**

**Read instructions before assembling. Fasteners should be finger tight until instructed to tighten according to the torque chart. Use standard methods and practices when attaching snowplow, including proper personal protective safety equipment.**

<b>Recommended Fastener Torque Chart</b>					
<b>Inch Fasteners Grade 5 and Grade 8</b>					
Size	Torque (ft-lb)		Size	Torque (ft-lb)	
	 Grade 5	 Grade 8		 Grade 5	 Grade 8
1/4-20	8.4	11.9	9/16-12	109	154
1/4-28	9.7	13.7	9/16-18	121	171
5/16-18	17.4	24.6	5/8-11	150	212
5/16-24	19.2	27.3	5/8-18	170	240
3/8-16	30.8	43.6	3/4-10	269	376
3/8-24	35.0	49.4	3/4-16	297	420
7/16-14	49.4	69.8	7/8-9	429	606
7/16-20	55.2	77.9	7/8-14	474	669
1/2-13	75.3	106.4	1-8	644	909
1/2-20	85.0	120.0	1-12	704	995
<b>Metric Fasteners Class 8.8 and 10.9</b>					
Size	Torque (ft-lb)		Size	Torque (ft-lb)	
	 Class 8.8	 Class 10.9		 Class 8.8	 Class 10.9
M6 x 1.00	7.7	11.1	M20 x 2.50	325	450
M8 x 1.25	19.5	26.9	M22 x 2.50	428	613
M10 x 1.50	38.5	53.3	M24 x 3.00	562	778
M12 x 1.75	67	93	M27 x 3.00	796	1139
M14 x 2.00	107	148	M30 x 3.50	1117	1545
M16 x 2.00	167	231	M33 x 3.50	1468	2101
M18 x 2.50	222	318	M36 x 4.00	1952	2701
These torque values apply to fasteners except those noted in the instructions.					

## INSTALLATION INSTRUCTIONS

**NOTE:** For easier assembly and installation, vehicle and all snowplow components should be on a smooth, level, hard surface, such as concrete.

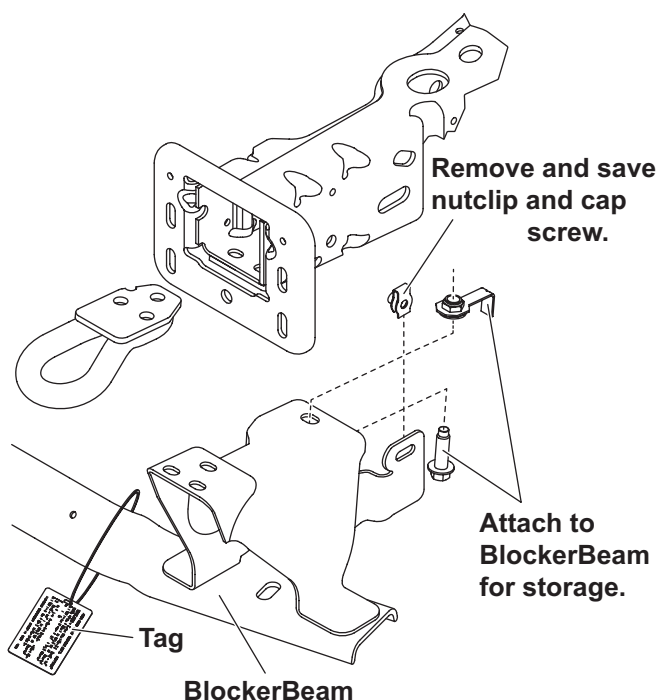
1. Detach any electrical cords attached to bumper (diesel engine and vehicles with fog lamps). Remove the bumper, retaining the fasteners for reinstallation of the bumper.

### **⚠ WARNING**

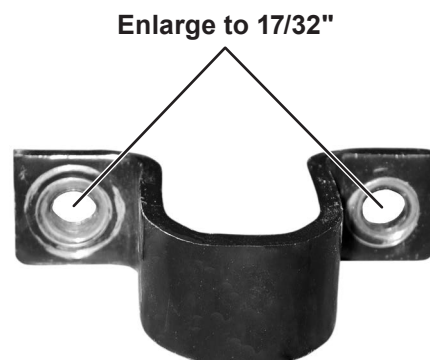
**Removing the BlockerBeam™ without installing snowplow attachment hardware may affect air bag deployment in a crash. Do not operate the truck unless either the BlockerBeam or the snowplow attachment hardware is installed on the vehicle.**

2. The vehicle is equipped with a BlockerBeam between the frame horns and behind the bumper. Disconnect the rubber air deflector from the BlockerBeam, then detach and remove the BlockerBeam and tow hooks from the truck frame. Save the tow hooks and tow hook fasteners for reinstallation later in this instruction. Remove and save the nutclips and cap screws for reinstallation on bumper mounting bracket in Step 6.

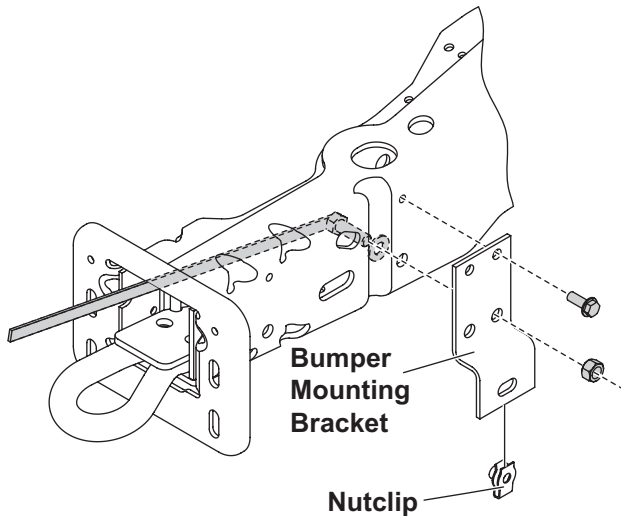
Loosely reattach the rear fastener and retainer nut to each side of the BlockerBeam to prevent loss. Affix tag 66871 to the BlockerBeam using the cable tie provided. The BlockerBeam must be reinstalled if the snowplow mount is ever removed and must be transferred with the vehicle when it is sold or traded.



3. Replace the tow hook into the frame and install and tighten only the single rear tow hook fastener at this time. If necessary, loosely install a front tow hook fastener to maintain tow hook hole alignment while tightening the rear fastener. Remove the front cap screw after tightening the rear cap screw.
4. Beginning on the driver's side, remove the two sway bar bracket fasteners and remove the retained nutclips from the sway bar bracket. Allow the sway bar bushing and U-bracket to separate from the vehicle frame.
5. Remove the U-bracket from the sway bar bushing. Enlarge the two holes in the U-bracket with a 17/32" drill to allow clearance for 1/2" cap screws, and save the U-bracket for later installation.



6. Install the bumper mounting bracket to existing frame holes using the self-tapping screw, and the 1/2" x 1-1/2" cap screw with handle, flat washer and locknut. Use only the rearmost holes in the bracket. Tighten these fasteners at this time, then install the nutclip taken from the BlockerBeam.



7. Position the mount against the vehicle frame with tow hook and sway bar holes aligned. Install, but do not tighten, the 1/2" x 1-3/4" cap screw, flat washers and locknut through the front of mount and existing hole in outboard side of frame to support the mount in position.



8. Install, but do not tighten, the remaining two tow hook fasteners.



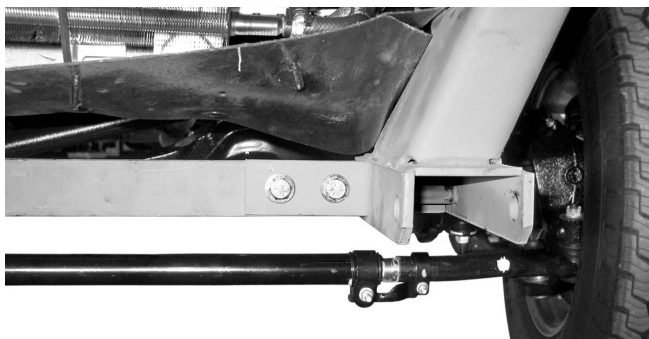
9. Insert the sway bar spacer between the mount and the sway bar bushing. Loosely attach the rear of the mount using 1/2" x 1-3/4" in the rear hole and 1/2" x 2" cap screws in the front hole, one flat washer on top of the sway bar bracket and one on the bottom of the modified U-bracket, and locknuts.

Cap screws and washers may be installed up from below with nuts and washers on top of the sway bar bracket as required for clearance.



10. Repeat Steps 3–9 on the passenger's side, using 1/2" x 2" cap screws in both holes of the sway bar bracket

11. Loosely attach the cross bar between both mounts using 1/2" x 1-3/4" cap screws, flat washers and locknuts. Set the center-to-center measurement between the U-brackets to 30-7/16", and tighten these four cap screws and locknuts.

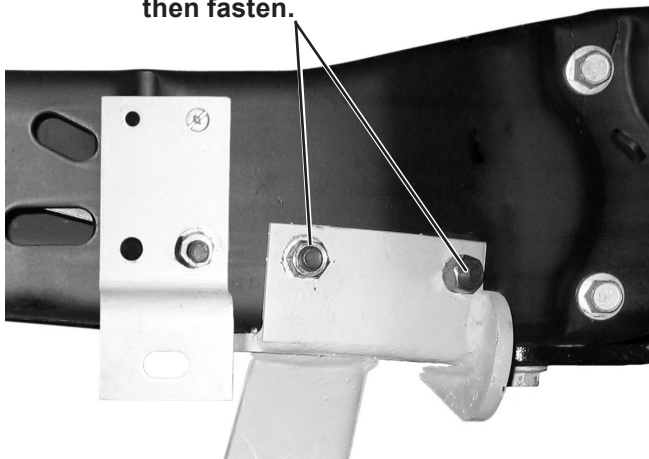


**⚠ CAUTION**

**Protect radiators and cooling lines against damage while drilling holes in frame.**

12. With the mount firmly against truck frame, drill two 17/32" holes through the side of the frame at the rear of mount using the holes in the mount as locators. Fasten securely using two 1/2" x 1-1/2" cap screws with handles, flat washers and locknuts.

**Drill 17/32" holes,  
then fasten.**



13. Beginning on the driver's side, tighten the tow hook fasteners first, then tighten the sway bar bracket fasteners. Next, tighten the 1/2" x 1-1/2" cap screw and locknut passing through the frame side.

14. Drill one 17/32" hole through the inboard side of the frame at the front of the mount, just ahead of the radiators, using the hole provided in the mount as the locator. Fasten securely using one 1/2" x 1-3/4" cap screw, flat washers and locknut.



15. Repeat Steps 12–14 on the passenger's side.
16. Tighten all fasteners at this time according to the torque chart.
17. Use cable ties to tie up cooling lines that may contact parts just installed. It is important to provide sufficient clearance between all portions of the cooling lines and the snowplow mount components.

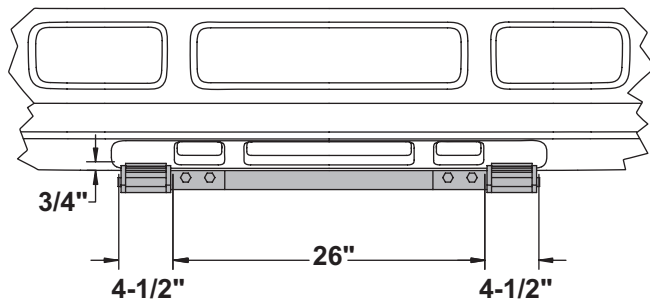
---

**NOTE: Use anti-chafing material in those situations where sufficient clearance cannot be maintained.**

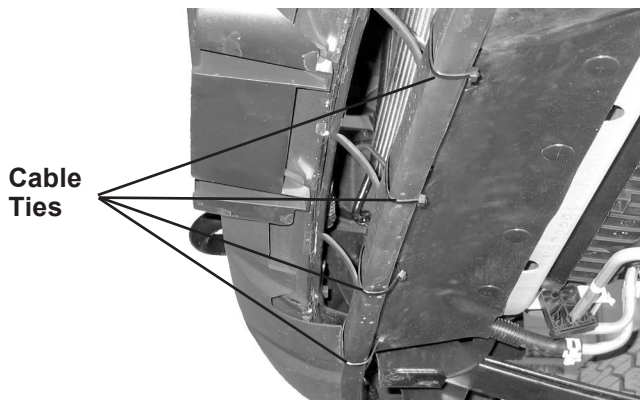
---

18. Reinstall the bumper using existing hardware at the frame horns and at the bumper mounting brackets. Reattach any electrical cords removed during bumper removal.

19. The air dam can be notched generally as shown to clear the mount receivers if necessary.



20. Attach the front of the rubber air deflector that was originally attached to the BlockerBeam™ to the bottom of the air dam with the four provided cable ties.



**NOTE: After five to ten hours of snowplow usage, retorque all mount assembly fasteners.**

The company reserves the right under its product improvement policy to change construction or design details and furnish equipment when so altered without reference to illustrations or specifications used. This equipment manufacturer or the vehicle manufacturer may require or recommend optional equipment for snow removal. Do not exceed vehicle ratings with a snowplow. The company offers a limited warranty for all snowplows and accessories. See separately printed page for this important information.