

CONICAL FERMENTER & GLYCOL CHILLER SPARE PARTS

BASIC UNIT SPARE PARTS

1. Plastic Base
Item #: 10321



2. Plastic Base Seal
Item #: 10322



3. Cone Plug Seal
Item #: 10333



4. Tri Clamp - 5 cm (2")
Item #: 10334



6. Cone Plug - 5 cm (2")
Item #: 10326



5. TMP30 Digital Display
Item #: 10344



8. 2 m (6.5 ft) Power Cord
Item #: 10337



9. Power Adapter and Cord

NZ/AU: 10338
UK: 10343
EU: 10339
USA: 10345



7. Grainfather Conical Fermenter Lid
Item #: 10346



One end plugs into the fermenter and the other end plugs into the Adapter or into the Glycol chiller if they have this.

This plugs into the wall and the 2 metre power cord. This is not needed if they have the Glycol Chiller.

10. Grainfather Conical Fermenter Silicone Bung
Item #: 55553



11. Bubbler Airlock (Vintage)
Item #: 55521



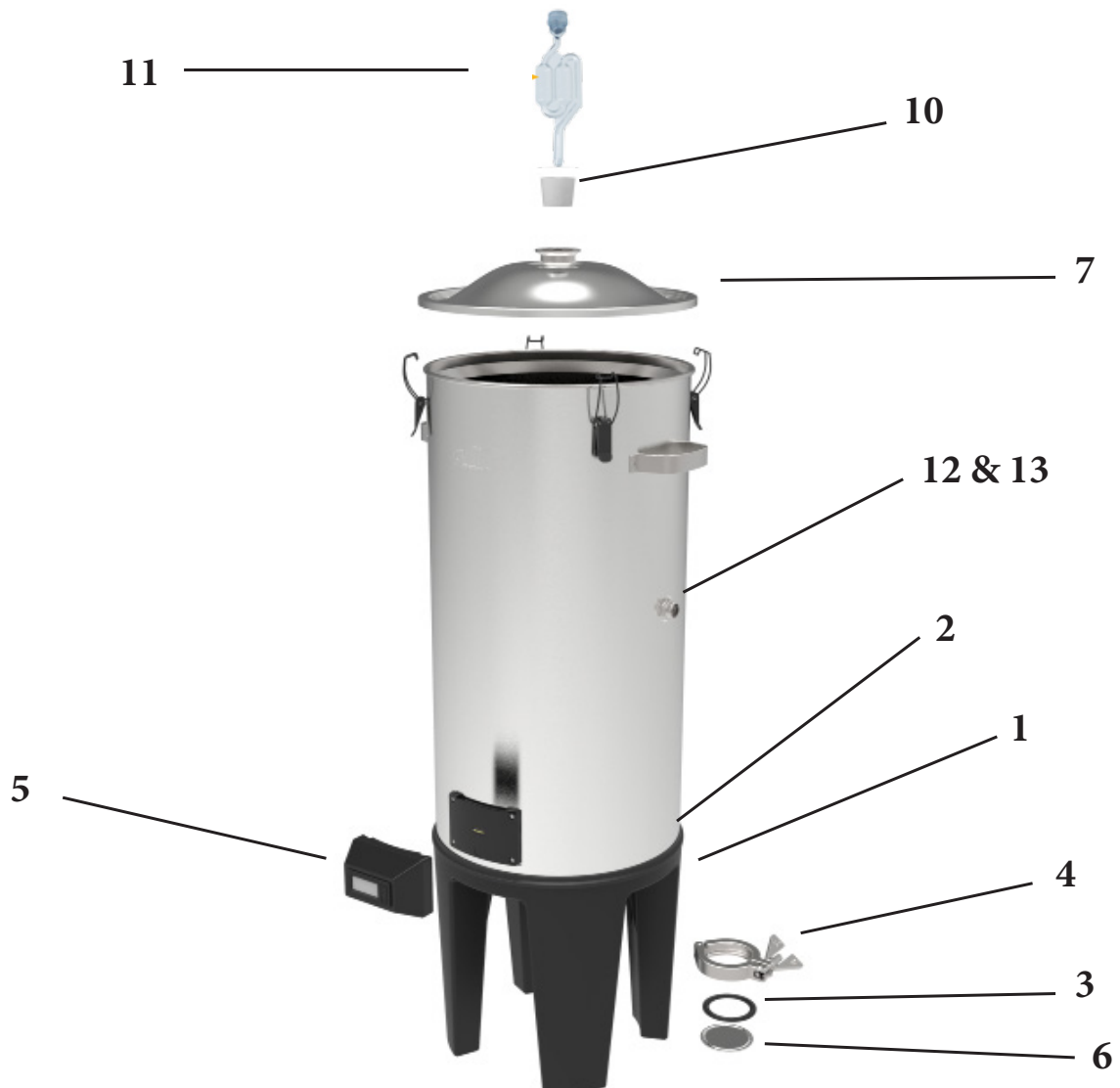
12. Cooling Sleeve Nut
Item #: 10079



13. Cooling Sleeve O-ring
Item #: 10078



SIZE: OD: 15.5 mm &
2.5 mm thick



DUAL VALVE TAP SPARE PARTS

1. Valve Body
Item #: 10099



2. Valve Spring
Item #: 10098



3. Ball Valve
Item #: 10296



4. Liquid Inlet
Item #: 10096



5. Plug Shaft
Item #: 10095



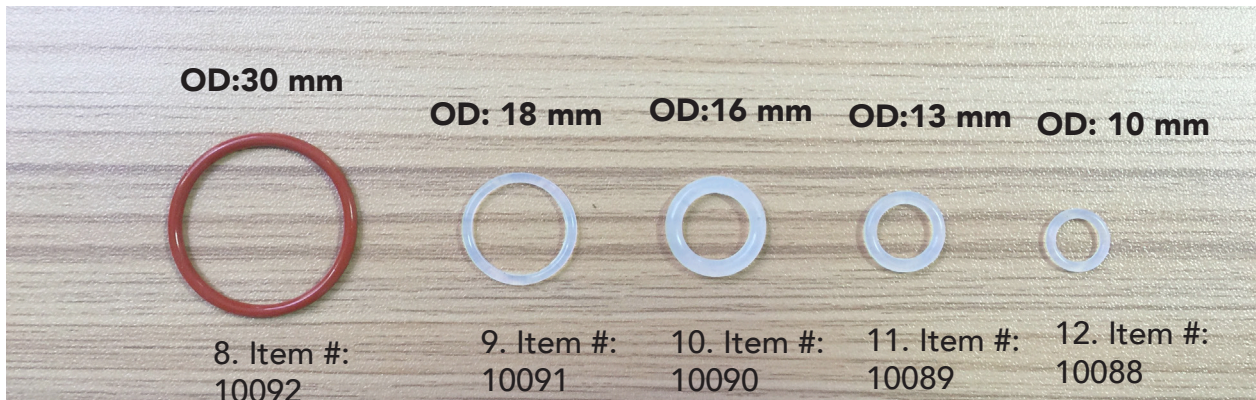
6. Adapter
Item #: 10094



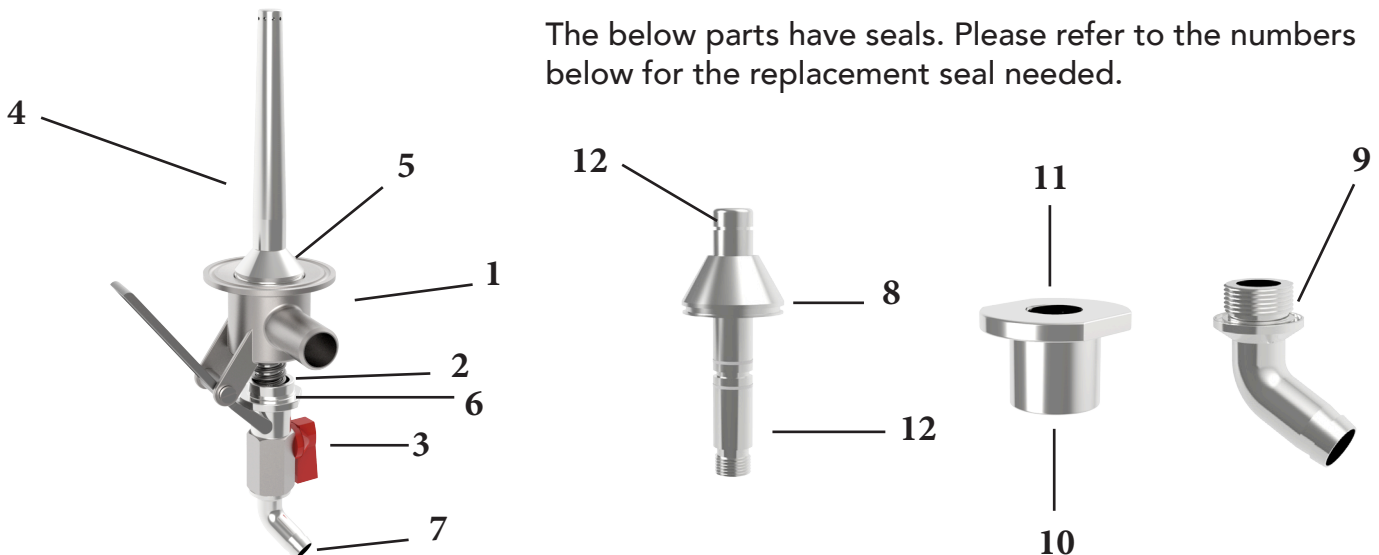
7. Sample Tube
Item #: 10093



Seals for the Tap



The below parts have seals. Please refer to the numbers below for the replacement seal needed.



Assembly of the Dual Valve Tap

Just if a customer decides to take it apart.



1. Push plug shaft into body



2. Attach spring



3. Screw on adapter



4. Screw on ball valve



5. Screw on sample tube



6. Attach liquid inlet

Glycol Chiller Spare Parts

1. Return Manifold Barbed Joint
Item #: 10080



2. Outlet Manifold Barbed Joint
Item #: 10082



3. Back Wheel
Item #: 10083



4. Plastic Glycol Filler Cap
Item #: 10084



5. Top Plastic Handle
Item #: 10085



