
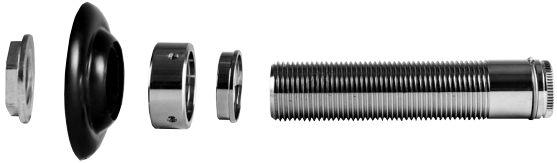


DRAFT BREWER™



COLD CRASH™ KEEZER KIT

INVENTORY



Beer Shank Assembly



Beer Faucet



Tap Handle



Ball Lock Disconnect



Tail Piece



Barbed Swivel Nut



Hex Nut



Beverage Tubing



Neoprene Beer
Shank Washer



Worm Gear
Clamps (2)

BEFORE YOU BEGIN

YOU'LL NEED THESE TOOLS FOR PROPER INSTALLATION:

- Chest Freezer
- Wooden Freezer Collar
See Note to the Right
- Temperature Controller
- Electric Drill
- $\frac{7}{8}$ or 1" Hole Saw - *A spade bit will work for softer materials*
- Adjustable Wrench
- Square or Measuring Tape
- Faucet Wrench - *Optional, for tightening the faucet to the shank*

These instructions are written for installation of a single faucet. If you are installing multiple faucets, keep this in consideration when choosing where to mount each tap.

Building a keezer requires installation of a collar on your chest freezer. A collar should be mounted between the lid and body of the freezer, extending the height of the body. This provides a safe place to drill holes for mounting draft hardware. **DO NOT DRILL DIRECTLY INTO THE FREEZER—this will damage the cooling lines and permanently disable it.**

Collars are typically built from simple lumber. There are a number of resources available detailing how to construct and install a professional-quality collar from a wide range of materials.

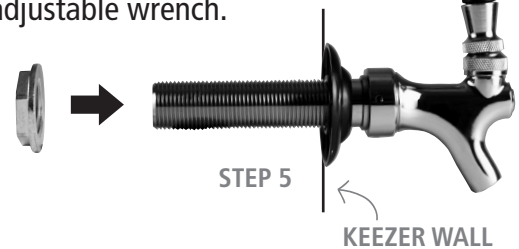
ASSEMBLY

INSTALLING THE TAP

1. Mark the mounting location for your tap on the collar. The location must not interfere with or obstruct the keg once you've installed the faucet shank. **DO NOT DRILL DIRECTLY INTO THE FREEZER—this will damage the cooling lines and permanently disable your freezer.**
2. Carefully drill the holes into the collar. A $\frac{7}{8}$ " hole should be sufficient, but a 1" hole will allow for more clearance. Use a hole saw for metal, plastic, or wood. A spade bit will also work fine on a wooden keezer collar.
3. Attach the faucet to the shank. Use a faucet wrench, if available, to tighten.

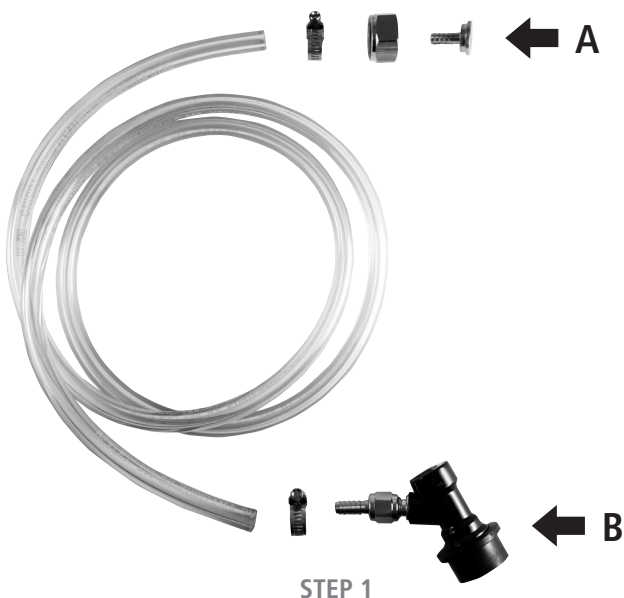


4. Attach the tap handle.
5. Thread the shank through the drilled hole. Attach the lock nut from the inside of the collar, holding the faucet in the upright position. Tighten with an adjustable wrench.



INSTALLING THE DRAFT LINE

1. Assemble the liquid draft line. Use hot water to soften both ends of the tubing—this will make it much easier to insert the hardware.

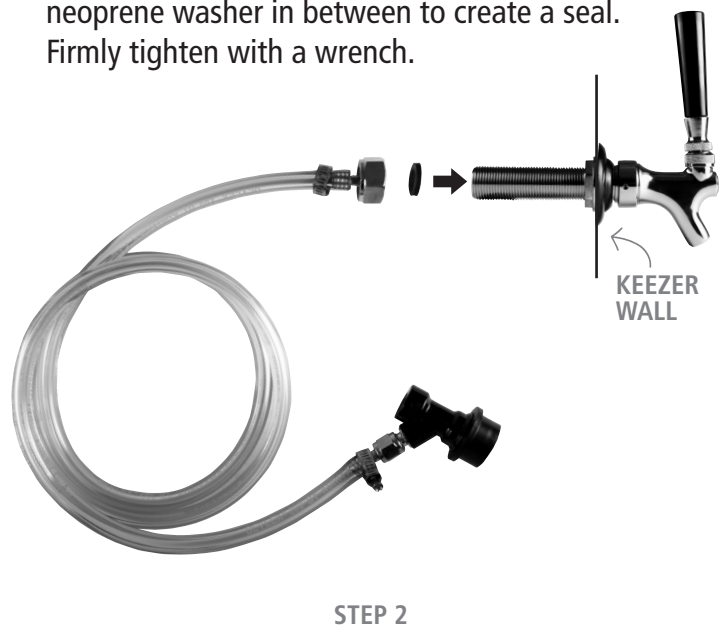


End A: Slide the worm gear clamp, then the hex nut onto the tubing. Insert the tailpiece into the tubing.

End B: Screw the barbed swivel nut onto the liquid disconnect. Slide the worm gear clamp onto the tubing. Insert the assembled disconnect into the tubing.

Tighten both worm gear clamps over the barbed hardware on each end to secure.

2. Thread the hex nut onto the shank with the neoprene washer in between to create a seal. Firmly tighten with a wrench.



Congratulations, You're Ready to Hook Up Some Homebrew and Have a Party! Cheers!