

# DRAFT DB BREWER

## COLD CRASH™ KEEZER GAS LINE KIT

## BEFORE YOU BEGIN

You'll need an adjustable wrench for installation.

These instructions are written for any of the gas line kits, regardless of how many ports you have chosen for your manifold.

Building a keezer requires installation of a collar on your chest freezer. A collar should be mounted between the lid and body of the freezer, extending the height of the body. This provides a safe place to drill holes for mounting draft hardware. **DO NOT DRILL DIRECTLY INTO THE FREEZER**—this will damage the cooling lines and permanently disable it. Collars are typically built from simple lumber. There are a number of resources available detailing how to construct and install a professional-quality collar from a wide range of materials.

## INVENTORY



CO<sub>2</sub> Distribution Manifold  
*Your choice of  
2, 3, 4, or 6 ports*



Gas Line Jumper  
with 1/4 MFL connectors  
*To connect the CO<sub>2</sub> regulator  
to the manifold*



Ball-lock Gas Line Connectors  
*One for each port on the  
manifold*



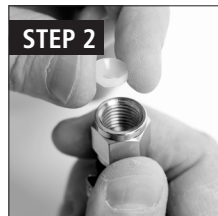
Flared Nylon Washers

\*CO<sub>2</sub> Regulator not included

## ASSEMBLY



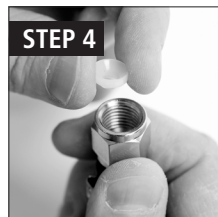
**1.** Ensure that your CO<sub>2</sub> Regulator\* has a 1/4 MFL connection on the output.



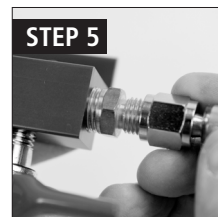
**2.** Place a Flared Nylon Washer into the swivel nut connector on one end of the Gas Line Jumper tubing.



**3.** Thread this swivel nut onto the MFL connection of your CO<sub>2</sub> regulator, so that the Flared Washer is inside the metal-to-metal connection. Tighten snugly with your wrench.



**4.** Place a Flared Nylon Washer into the swivel nut connector on the free end of the gas line jumper.



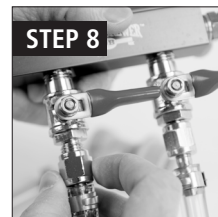
**5.** Thread this swivel nut onto the 1/4 MFL connector port that is on one end of the CO<sub>2</sub> Distribution Manifold. This port will be on the end of the manifold and will NOT have a shut-off valve. Tighten with your wrench.



**6.** Place a Flared Nylon Washer into the swivel nut connector at the free end of one of the Ball-lock gas lines.



**7.** Thread this swivel nut onto the first of the shut-off valve ports on the manifold. Tighten with your wrench.



**8.** Repeat steps 6 and 7 for all remaining gas lines and shut-off valves.

**TIP:** Check all connections and tighten with your wrench as needed. Do not forget to check that the gray ball-lock disconnects are also tight to the gas lines.