



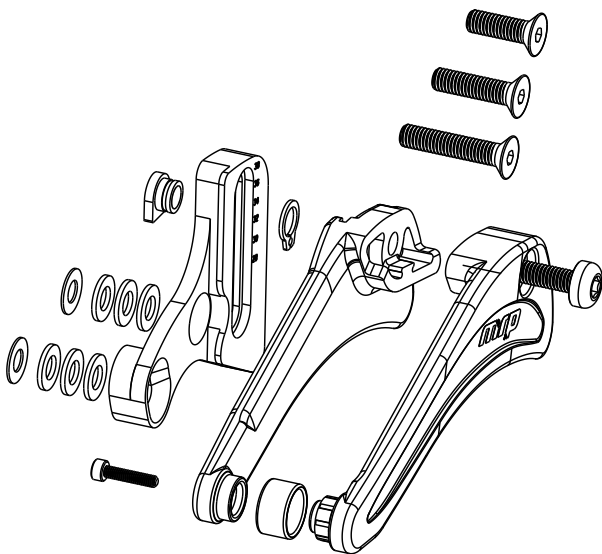
**IMPORTANT CONSUMER SAFETY INFORMATION**

WARNING: RIDING A BIKE IS DANGEROUS. NOT PROPERLY MAINTAINING OR INSPECTING YOUR BIKE AND ITS COMPONENTS IS EVEN MORE DANGEROUS. IT IS ALSO DANGEROUS TO NOT READ AND FOLLOW THESE INSTRUCTIONS.

1. DO NOT PERFORM ANY MODIFICATIONS OR ADJUSTMENTS THAT ARE NOT OUTLINED IN THIS MANUAL.
2. INSPECT YOUR CHAIN GUIDE BEFORE EVERY RIDE. INSPECT AREAS FOR ANY SIGNS OF EXCESSIVE RUBBING, BENDING, CRACKING OR OTHER DAMAGE. IF YOU NOTICE ANYTHING ABNORMAL, DO NOT RIDE IT. RETURN IT TO YOUR DEALER OR CONTACT MRP FOR A COMPLETE INSPECTION AND NECESSARY REPAIR.
3. MRP RECOMMENDS THAT YOU WEAR PROPER SAFETY EQUIPMENT EVERY TIME YOU RIDE, INCLUDING APPROVED BICYCLE HELMET. NEVER RIDE AT NIGHT WITHOUT LIGHTS.
4. ALWAYS USE GENUINE MRP PARTS. USE OF AFTERMARKET REPLACEMENT PARTS AND UPGRADES VOIDS THE WARRANTY AND COULD CAUSE STRUCTURAL FAILURE.

*MRP HIGHLY RECOMMENDS THAT YOU HAVE YOUR NEW GUIDE INSTALLED BY A PROFESSIONAL MECHANIC AT YOUR FAVORITE LOCAL BIKE SHOP. IF YOU HAVE ANY DOUBTS ABOUT HOW TO INSTALL YOUR GUIDE, TAKE IT TO A BIKE SHOP. YOU'LL BE GLAD YOU DID.*

1



**COMPATIBILITY**

The S3/E-Mount 1x guide includes six 1mm washers and two .5mm washers which allow the guide to accommodate a wide range of chainlines. However, used in a single-ring application, two-ring “double” cranks may produce a less-than-ideal wide chainline. Wide chainlines can cause premature chain wear and may result in contact (rubbing) between the chain and the guide while in the largest cogs of the cassette. There are several “offset” chainrings on the market that can alleviate this.



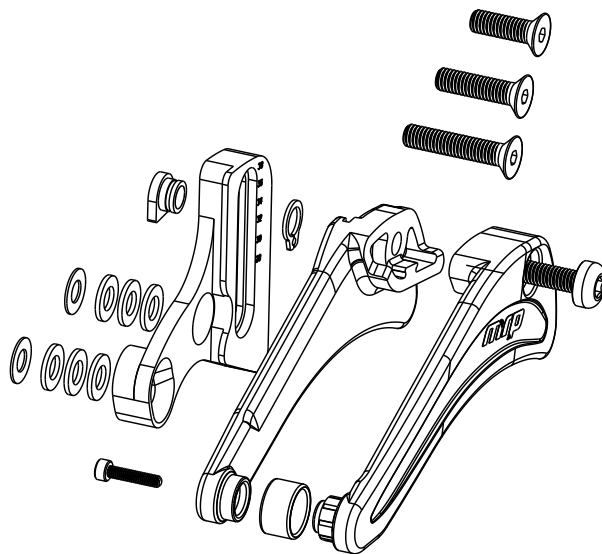
**IMPORTANT CONSUMER SAFETY INFORMATION**

WARNING: RIDING A BIKE IS DANGEROUS. NOT PROPERLY MAINTAINING OR INSPECTING YOUR BIKE AND ITS COMPONENTS IS EVEN MORE DANGEROUS. IT IS ALSO DANGEROUS TO NOT READ AND FOLLOW THESE INSTRUCTIONS.

1. DO NOT PERFORM ANY MODIFICATIONS OR ADJUSTMENTS THAT ARE NOT OUTLINED IN THIS MANUAL.
2. INSPECT YOUR CHAIN GUIDE BEFORE EVERY RIDE. INSPECT AREAS FOR ANY SIGNS OF EXCESSIVE RUBBING, BENDING, CRACKING OR OTHER DAMAGE. IF YOU NOTICE ANYTHING ABNORMAL, DO NOT RIDE IT. RETURN IT TO YOUR DEALER OR CONTACT MRP FOR A COMPLETE INSPECTION AND NECESSARY REPAIR.
3. MRP RECOMMENDS THAT YOU WEAR PROPER SAFETY EQUIPMENT EVERY TIME YOU RIDE, INCLUDING APPROVED BICYCLE HELMET. NEVER RIDE AT NIGHT WITHOUT LIGHTS.
4. ALWAYS USE GENUINE MRP PARTS. USE OF AFTERMARKET REPLACEMENT PARTS AND UPGRADES VOIDS THE WARRANTY AND COULD CAUSE STRUCTURAL FAILURE.

*MRP HIGHLY RECOMMENDS THAT YOU HAVE YOUR NEW GUIDE INSTALLED BY A PROFESSIONAL MECHANIC AT YOUR FAVORITE LOCAL BIKE SHOP. IF YOU HAVE ANY DOUBTS ABOUT HOW TO INSTALL YOUR GUIDE, TAKE IT TO A BIKE SHOP. YOU'LL BE GLAD YOU DID.*

1

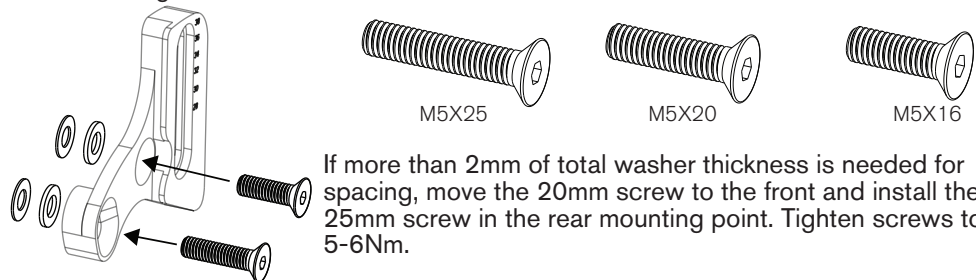


**COMPATIBILITY**

The S3/E-Mount 1x guide includes six 1mm washers and two .5mm washers which allow the guide to accommodate a wide range of chainlines. However, used in a single-ring application, two-ring “double” cranks may produce a less-than-ideal wide chainline. Wide chainlines can cause premature chain wear and may result in contact (rubbing) between the chain and the guide while in the largest cogs of the cassette. There are several “offset” chainrings on the market that can alleviate this.

**2**

Locate the front derailleur mount on your frame. The S3/E-Mount 1x guide uses two M5 screws to affix to your frame. Included in the hardware pack are M5 screws in three lengths: 16, 20, and 25mm. Use the 16mm screw in the front and 20mm screw in the rear mounting point. Getting your guide perfectly aligned is a trial and error process, but a great starting point is with one 1mm and .5mm washer installed on both M5 screws between the guide and the frame.



If more than 2mm of total washer thickness is needed for spacing, move the 20mm screw to the front and install the 25mm screw in the rear mounting point. Tighten screws to 5-6Nm.

**2**

Locate the front derailleur mount on your frame. The S3/E-Mount 1x guide uses two M5 screws to affix to your frame. Included in the hardware pack are M5 screws in three lengths: 16, 20, and 25mm. Use the 16mm screw in the front and 20mm screw in the rear mounting point. Getting your guide perfectly aligned is a trial and error process, but a great starting point is with one 1mm and .5mm washer installed on both M5 screws between the guide and the frame.



If more than 2mm of total washer thickness is needed for spacing, move the 20mm screw to the front and install the 25mm screw in the rear mounting point. Tighten screws to 5-6Nm.

**4**

Unthread the upper guide bolt from the captive slider nut, pull it halfway through the upper guide, and swing the upper guide open.

**5**

Install the crankset and chain. Close the upper guide and reinstall the upper guide bolt. Tighten the upper guide bolt to 1.2-1.3 Nm. The backplate features laser etching to assist in the vertical positioning of the guide. There should be roughly 3mm of space between the chain and the ceiling of the upper guide.

**6**

Check that the alignment of the guide is correct. The chain should be centered in the upper guide in the middle range of the cassette. There should be little or no contact between the chain and upper guide while in the smallest or largest cogs of the cassette. Refine this spacing using the included .5mm and 1mm washers if necessary.\*

*\*This will require reversal of the installation steps thus far and restarting at step one.*

**7**

Check that all fasteners have been appropriately tightened. For chainstay-mounted applications whereby the guide moves with the suspension, fully cycle the suspension to ensure there isn't contact between the upper guide and chainring. Check the functionality of the of the guide in a safe environment.

FOR MORE INFORMATION PLEASE VISIT US ON THE WEB AT  
**MRPBIKE.COM**  
OR CALL US AT (970)241-3518, WE'LL BE GLAD TO ASSIST YOU!

**4**

Unthread the upper guide bolt from the captive slider nut, pull it halfway through the upper guide, and swing the upper guide open.

**5**

Install the crankset and chain. Close the upper guide and reinstall the upper guide bolt. Tighten the upper guide bolt to 1.2-1.3 Nm. The backplate features laser etching to assist in the vertical positioning of the guide. There should be roughly 3mm of space between the chain and the ceiling of the upper guide.

**6**

Check that the alignment of the guide is correct. The chain should be centered in the upper guide in the middle range of the cassette. There should be little or no contact between the chain and upper guide while in the smallest or largest cogs of the cassette. Refine this spacing using the included .5mm and 1mm washers if necessary.\*

*\*This will require reversal of the installation steps thus far and restarting at step one.*

**7**

Check that all fasteners have been appropriately tightened. For chainstay-mounted applications whereby the guide moves with the suspension, fully cycle the suspension to ensure there isn't contact between the upper guide and chainring. Check the functionality of the of the guide in a safe environment.

FOR MORE INFORMATION PLEASE VISIT US ON THE WEB AT  
**MRPBIKE.COM**  
OR CALL US AT (970)241-3518, WE'LL BE GLAD TO ASSIST YOU!