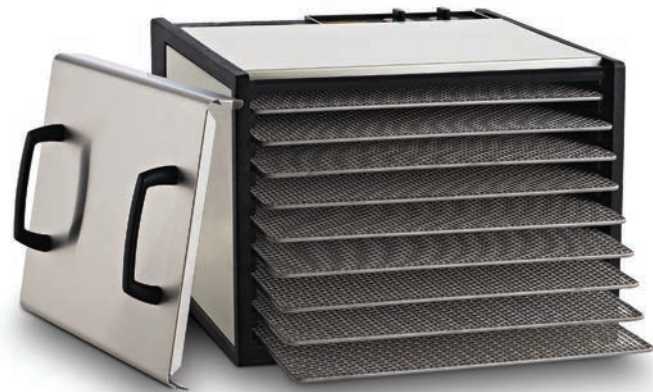


Project Name:	
Location:	
Item:	Qty.:
Model:	

#D900SHD Stainless Steel 9-Tray with SS Trays



Features

- Stainless steel case & door
- Sleek, full-grip handles
- 9 Stainless Steel trays w/ 15 sq. ft. of tray area.
- Built-in on/off switch.
- Adjustable thermostat
- 26-hour timer

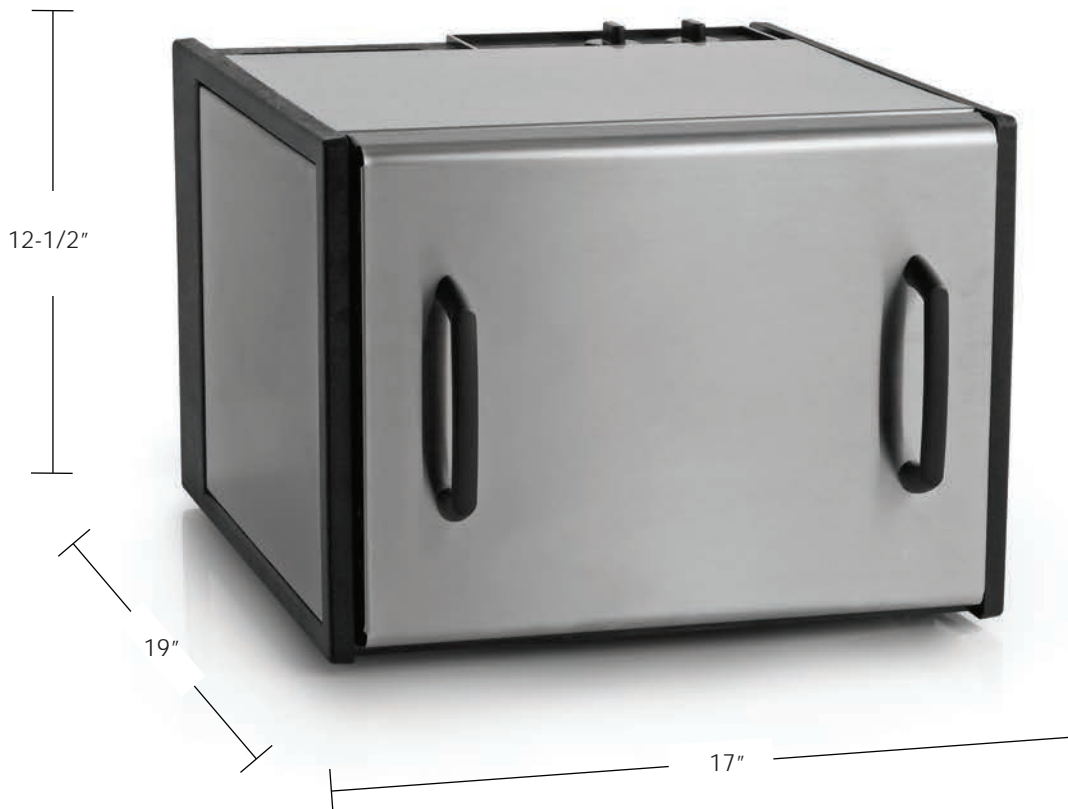


The long lasting beauty and modern appearance of Excalibur's stainless steel dehydrators lends a touch of class to your kitchen. 5-tray and 9-tray units come complete with our patented Parallex™ Horizontal Air Flow and Hyperwave™ Fluctuation Technology with adjustable thermostat ranging from 95°F to 155°F (safe for drying meat). The 26-hour timer is a wonderful convenience, simply set it and forget it. This new series from Excalibur is the perfect combination of industry leading air-flow mechanics and materials. Available with standard plastic drying trays or stainless steel drying trays.

	Specifications subject to change
	Approvals:

2013VerA

#D900SHD Stainless Steel 9-Tray with SS Trays



Specifications

Model No.	Dimensions (WxDxH)	Watts	Trays	Sq. Ft.	Weight	Finish
D900SHD	17"W x 19"D x 12 1/2"H	600	9	15	22 lbs	Stainless Steel