



Serpentine

IN FOUR COLORWAYS

The Serpentine line has been long revered for its visual beauty and grace. The alternating flow of the S-shaped line is punctuated by dynamic inversions that awaken the eye, evoking liveliness and movement.

Serpentine

IN FOUR COLORWAYS



KNOW

All Rule of Three fabrics are individually hand-marbled using the highest quality silks, leathers, Belgian linens, and cottons. Despite each textile's one-of-a-kind nature, our studio artists skillfully produce multiple yards in any given design and colorway creating a continuity throughout each production run. A cutting for approval is available for every order.

We love collaborating with designers and architects. Custom colorways are available for any of our designs.

CARE

Dry clean only.

Paper backing, knit backing, lamination and/or stain guard is available for an additional fee.

DETAILS

All designs are offered on 100% Silk, 100% Belgian Linen, and 100% Cotton Twill grounds. Available by the yard and sold exclusively to the trade.

Typically our products are made to order with lead times averaging 4 - 8 weeks. If fabric is in stock the lead time will be less.

SIZING

Fabric width is 43" - Pattern width is 40".
Fabric length is approximately 112" - Maximum pattern length is 108".

Minimum fabric order is 3 yards. A cut fee may be applied for orders fewer than 3 yards.

Pricing available upon request.



ABYSS



BASTILLE



RED DESERT



STARLIGHT NIGHT

Due to the handmade nature of our product and inherent characteristics of the marbling process, slight variations in color and pattern may occur from one batch to another. This is the beauty of Rule of Three's original, bespoke fabric.

Please always reference an actual Rule of Three fabric sample, designs viewed on screen or printed from a document are not accurate for color or scale.



Topo

IN SIX COLORWAYS

Like the art and science of illuminating a landscape from above, Topo is a dense and detailed design. Built with 3 to 5 colors, it follows organic laws of movement, creating swells and transitions that invite the sense of wonder we feel when flying high above the Earth.

Topo

IN SIX COLORWAYS



KNOW

All Rule of Three fabrics are individually hand-marbled using the highest quality silks, leathers, Belgian linens, and cottons. Despite each textile's one-of-a-kind nature, our studio artists skillfully produce multiple yards in any given design and colorway creating a continuity throughout each production run. A cutting for approval is available for every order.

We love collaborating with designers and architects. Custom colorways are available for any of our designs.

CARE

Dry clean only.

Paper backing, knit backing, lamination and/or stain guard is available for an additional fee.

DETAILS

All designs are offered on 100% Silk, 100% Belgian Linen, and 100% Cotton Twill grounds. Available by the yard and sold exclusively to the trade.

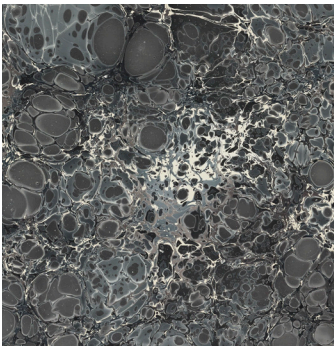
Typically our products are made to order with lead times averaging 4 - 8 weeks. If fabric is in stock the lead time will be less.

SIZING

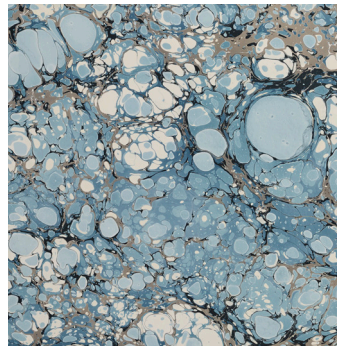
Fabric width is 43" - Pattern width is 40".
Fabric length is approximately 112" - Maximum pattern length is 108".

Minimum fabric order is 3 yards. A cut fee may be applied for orders fewer than 3 yards.

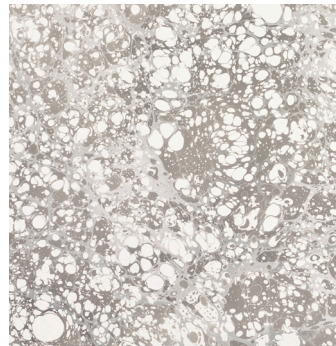
Pricing available upon request.



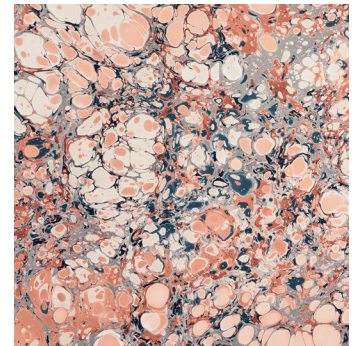
ABYSS



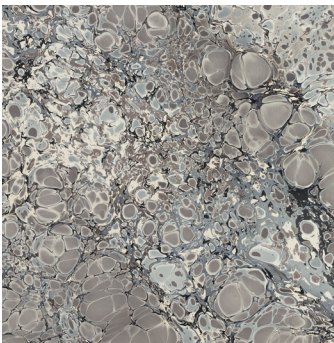
ANACAPRI



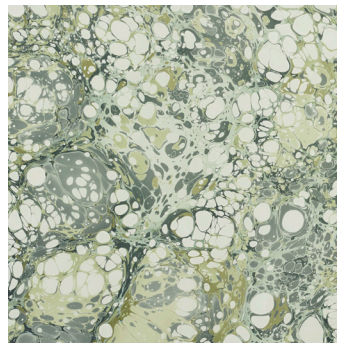
CEMENT



RED DESERT



SILVER SPRING



SPANISH MOSS

Due to the handmade nature of our product and inherent characteristics of the marbling process, slight variations in color and pattern may occur from one batch to another. This is the beauty of Rule of Three's original, bespoke fabric.

Please always reference an actual Rule of Three fabric sample, designs viewed on screen or printed from a document are not accurate for color or scale.



Stone Plume

IN SIX COLORWAYS

The traditional art of marbling has often been compared to the behavior of clouds and wind. Stone Plume is a dramatic example of this relationship, as the large cloudy stones in the pattern remain largely preserved, with a romantic breeze that blows across them creating the dynamic plumes.

Stone Plume

IN SIX COLORWAYS



KNOW

All Rule of Three fabrics are individually hand-marbled using the highest quality silks, leathers, Belgian linens, and cottons. Despite each textile's one-of-a-kind nature, our studio artists skillfully produce multiple yards in any given design and colorway creating a continuity throughout each production run. A cutting for approval is available for every order.

We love collaborating with designers and architects. Custom colorways are available for any of our designs.

CARE

Dry clean only.

Paper backing, knit backing, lamination and/or stain guard is available for an additional fee.

DETAILS

All designs are offered on 100% Silk, 100% Belgian Linen, and 100% Cotton Twill grounds. Available by the yard and sold exclusively to the trade.

Typically our products are made to order with lead times averaging 4 - 8 weeks. If fabric is in stock the lead time will be less.

SIZING

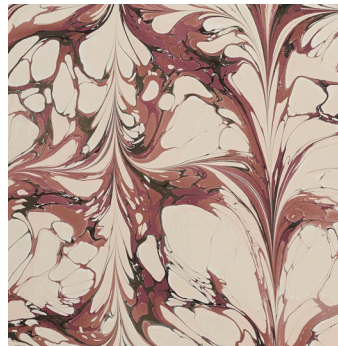
Fabric width is 43" - Pattern width is 40".
Fabric length is approximately 112" - Maximum pattern length is 108".

Minimum fabric order is 3 yards. A cut fee may be applied for orders fewer than 3 yards.

Pricing available upon request.



CANNA LILY



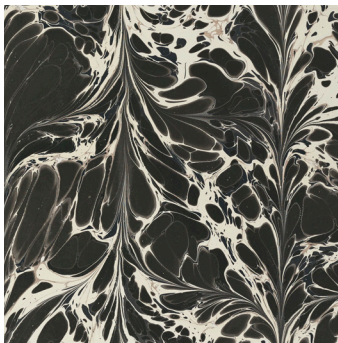
DARBY ROSE



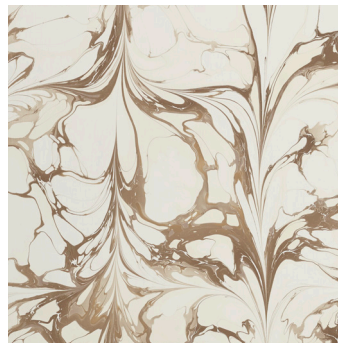
DARK IRIS



STARLIGHT NIGHT



TAPA CLOTH



WINTER WHITE

Due to the handmade nature of our product and inherent characteristics of the marbling process, slight variations in color and pattern may occur from one batch to another. This is the beauty of Rule of Three's original, bespoke fabric.

Please always reference an actual Rule of Three fabric sample, designs viewed on screen or printed from a document are not accurate for color or scale.



Seastone

IN SEVEN COLORWAYS

Walking along the edge of the ocean, we are in two worlds at the same time. We witness the vastness of the sea, and the details of the land it returns to. Seastone embraces the dynamic tension at the edge of these two worlds, a play on scale that unites the large and small.

Seastone

IN SEVEN COLORWAYS



KNOW

All Rule of Three fabrics are individually hand-marbled using the highest quality silks, leathers, Belgian linens, and cottons. Despite each textile's one-of-a-kind nature, our studio artists skillfully produce multiple yards in any given design and colorway creating a continuity throughout each production run. A cutting for approval is available for every order.

We love collaborating with designers and architects. Custom colorways are available for any of our designs.

CARE

Dry clean only.

Paper backing, knit backing, lamination and/or stain guard is available for an additional fee.

DETAILS

All designs are offered on 100% Silk, 100% Belgian Linen, and 100% Cotton Twill grounds. Available by the yard and sold exclusively to the trade.

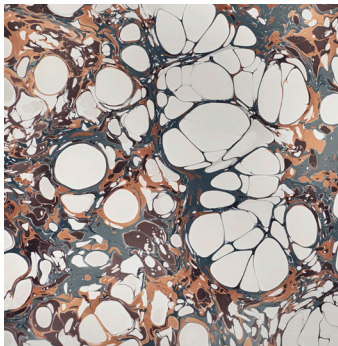
Typically our products are made to order with lead times averaging 4 - 8 weeks. If fabric is in stock the lead time will be less.

SIZING

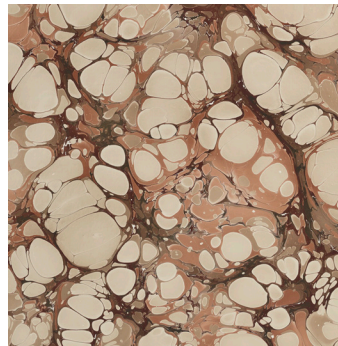
Fabric width is 43" - Pattern width is 40".
Fabric length is approximately 112" - Maximum pattern length is 108".

Minimum fabric order is 3 yards. A cut fee may be applied for orders fewer than 3 yards.

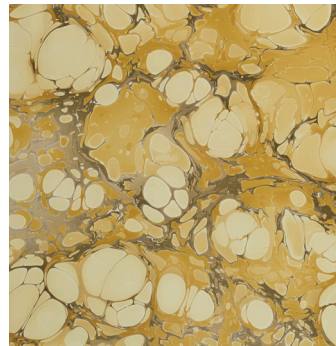
Pricing available upon request.



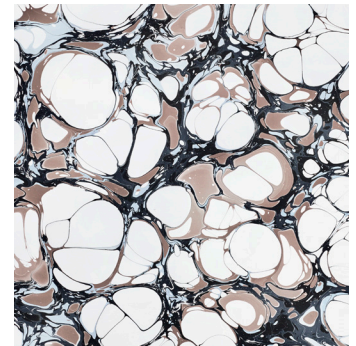
ABALONE



ADOBE BLUSH



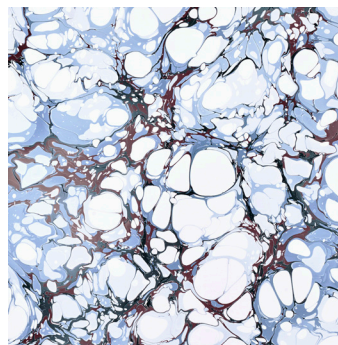
AMARILLO



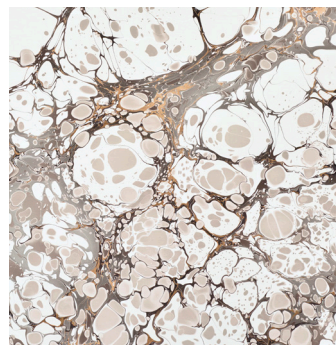
BASTILLE



BONE CHINA



LE MARAIS



MINERAL

Due to the handmade nature of our product and inherent characteristics of the marbling process, slight variations in color and pattern may occur from one batch to another. This is the beauty of Rule of Three's original, bespoke fabric.

Please always reference an actual Rule of Three fabric sample, designs viewed on screen or printed from a document are not accurate for color or scale.



Abacus

IN SEVEN COLORWAYS

Inspired by the French marbling pattern called "nonpareil" (unrivaled), Abacus explores the connection between mathematics and reality. With precise attention to color quantities, scales of movement and rhythmic intervals, it is a dramatic meditation on measurement and value.

Abacus

IN SEVEN COLORWAYS



KNOW

All Rule of Three fabrics are individually hand-marbled using the highest quality silks, leathers, Belgian linens, and cottons. Despite each textile's one-of-a-kind nature, our studio artists skillfully produce multiple yards in any given design and colorway creating a continuity throughout each production run. A cutting for approval is available for every order.

We love collaborating with designers and architects. Custom colorways are available for any of our designs.

CARE

Dry clean only.

Paper backing, knit backing, lamination and/or stain guard is available for an additional fee.

DETAILS

All designs are offered on 100% Silk, 100% Belgian Linen, and 100% Cotton Twill grounds. Available by the yard and sold exclusively to the trade.

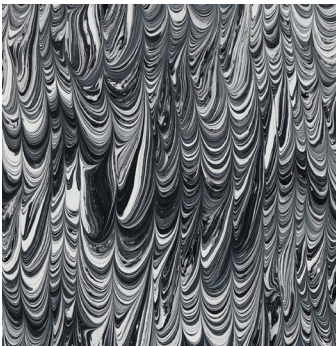
Typically our products are made to order with lead times averaging 4 - 8 weeks. If fabric is in stock the lead time will be less.

SIZING

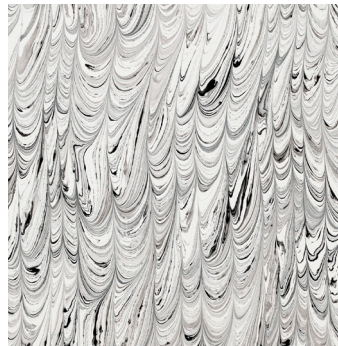
Fabric width is 43" - Pattern width is 40".
Fabric length is approximately 112" - Maximum pattern length is 108".

Minimum fabric order is 3 yards. A cut fee may be applied for orders fewer than 3 yards.

Pricing available upon request.



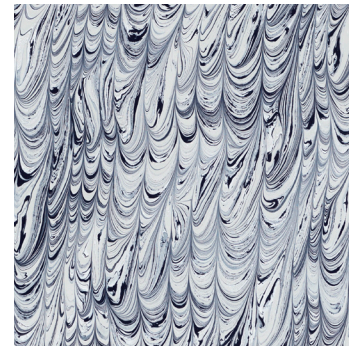
BLACK AGATE DARK



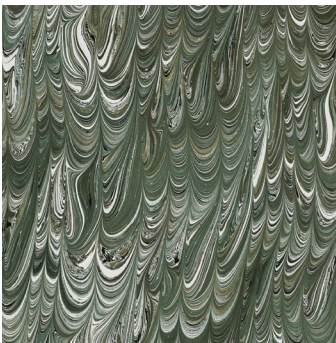
BLACK AGATE LIGHT



INDIGO DARK



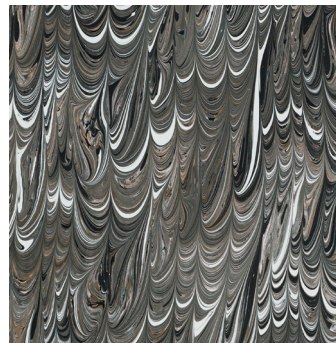
INDIGO LIGHT



MOSS AGATE DARK



MOSS AGATE LIGHT



TIGERS EYE DARK

Due to the handmade nature of our product and inherent characteristics of the marbling process, slight variations in color and pattern may occur from one batch to another. This is the beauty of Rule of Three's original, bespoke fabric.

Please always reference an actual Rule of Three fabric sample, designs viewed on screen or printed from a document are not accurate for color or scale.



Crystalline

IN TEN COLORWAYS

*

Crystalline

IN TEN COLORWAYS



KNOW

All Rule of Three fabrics are individually hand-marbled using the highest quality silks, leathers, Belgian linens, and cottons. Despite each textile's one-of-a-kind nature, our studio artists skillfully produce multiple yards in any given design and colorway creating a continuity throughout each production run. A cutting for approval is available for every order.

We love collaborating with designers and architects. Custom colorways are available for any of our designs.

CARE

Dry clean only.

Paper backing, knit backing, lamination and/or stain guard is available for an additional fee.

DETAILS

All designs are offered on 100% Silk, 100% Belgian Linen, and 100% Cotton Twill grounds. Available by the yard and sold exclusively to the trade.

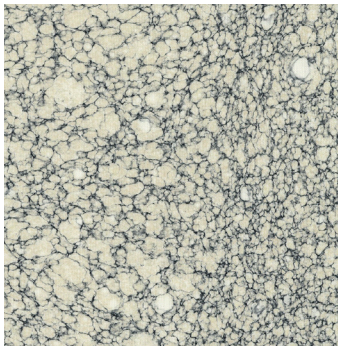
Typically our products are made to order with lead times averaging 4 - 8 weeks. If fabric is in stock the lead time will be less.

SIZING

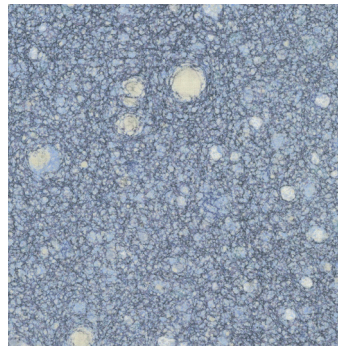
Fabric width is 43" - Pattern width is 40".
Fabric length is approximately 112" - Maximum pattern length is 108".

Minimum fabric order is 3 yards. A cut fee may be applied for orders fewer than 3 yards.

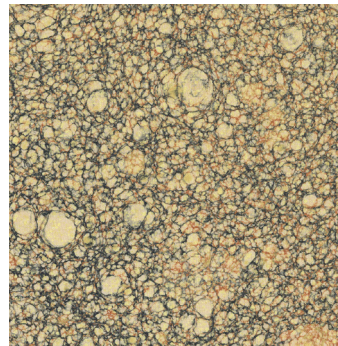
Pricing available upon request.



CALCITE



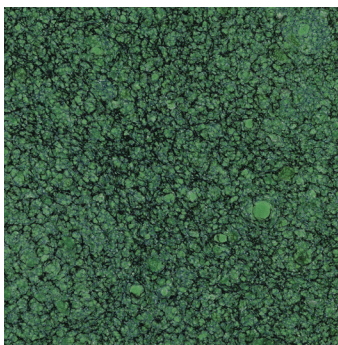
CELESTINE



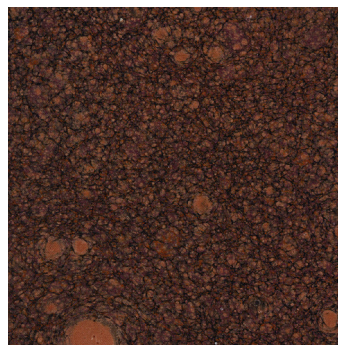
CITRINE



COPPERSTONE



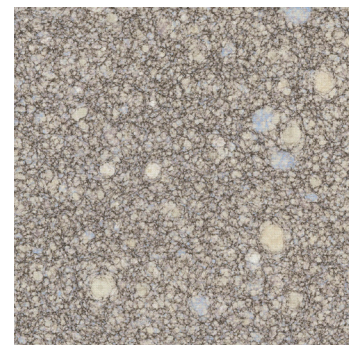
FLORITE



GARNET



GYPSUM



OPAL

Due to the handmade nature of our product and inherent characteristics of the marbling process, slight variations in color and pattern may occur from one batch to another. This is the beauty of Rule of Three's original, bespoke fabric.

Please always reference an actual Rule of Three fabric sample, designs viewed on screen or printed from a document are not accurate for color or scale.

Crystalline

IN TEN COLORWAYS



KNOW

All Rule of Three fabrics are individually hand-marbled using the highest quality silks, leathers, Belgian linens, and cottons. Despite each textile's one-of-a-kind nature, our studio artists skillfully produce multiple yards in any given design and colorway creating a continuity throughout each production run. A cutting for approval is available for every order.

We love collaborating with designers and architects. Custom colorways are available for any of our designs.

CARE

Dry clean only.

Paper backing, knit backing, lamination and/or stain guard is available for an additional fee.

DETAILS

All designs are offered on 100% Silk, 100% Belgian Linen, and 100% Cotton Twill grounds. Available by the yard and sold exclusively to the trade.

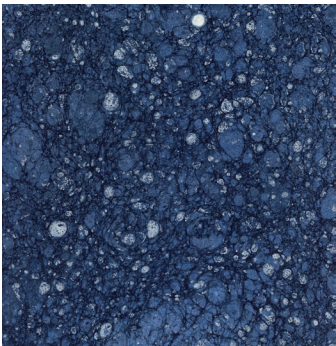
Typically our products are made to order with lead times averaging 4 - 8 weeks. If fabric is in stock the lead time will be less.

SIZING

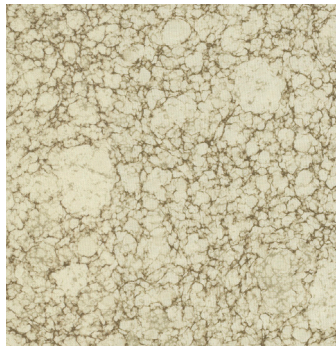
Fabric width is 43" - Pattern width is 40".
Fabric length is approximately 112" - Maximum pattern length is 108".

Minimum fabric order is 3 yards. A cut fee may be applied for orders fewer than 3 yards.

Pricing available upon request.



LAPIS



TOPAZ

Due to the handmade nature of our product and inherent characteristics of the marbling process, slight variations in color and pattern may occur from one batch to another. This is the beauty of Rule of Three's original, bespoke fabric.

Please always reference an actual Rule of Three fabric sample, designs viewed on screen or printed from a document are not accurate for color or scale.



Tides Ombre

IN FOUR COLORWAYS

Everything flows. Staring out over the Painted Desert, the Pacific Ocean, even the rolling hills of Tuscany, the unrelenting flow of nature is evident. The meeting of earth and sky, sky and water, water and earth has an ebb and flow, forever changing but always meeting. Tides depicts this bold and immense relationship between the elements.

Tides Ombre

IN FOUR COLORWAYS



KNOW

All Rule of Three fabrics are individually hand-marbled using the highest quality silks, leathers, Belgian linens, and cottons. Despite each textile's one-of-a-kind nature, our studio artists skillfully produce multiple yards in any given design and colorway creating a continuity throughout each production run. A cutting for approval is available for every order.

We love collaborating with designers and architects. Custom colorways are available for any of our designs.

CARE

Dry clean only.

Paper backing, knit backing, lamination and/or stain guard is available for an additional fee.

DETAILS

All designs are offered on 100% Silk, 100% Belgian Linen, and 100% Cotton Twill grounds. Available by the yard and sold exclusively to the trade.

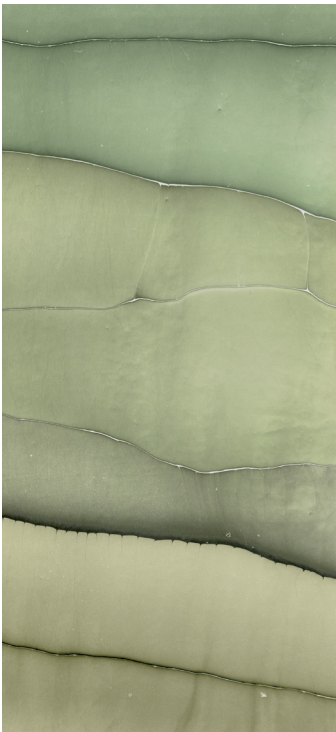
Typically our products are made to order with lead times averaging 4 - 8 weeks. If fabric is in stock the lead time will be less.

SIZING

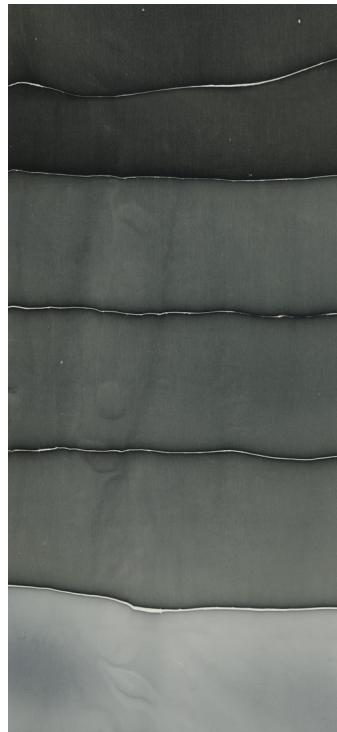
Fabric width is 43" - Pattern width is 40".
Fabric length is approximately 112" - Maximum pattern length is 108".

Minimum fabric order is 3 yards. A cut fee may be applied for orders fewer than 3 yards.

Pricing available upon request.



PEBBLE BEACH



PLAYA JARDIN



PORTO COVO



WINDANSEA

Due to the handmade nature of our product and inherent characteristics of the marbling process, slight variations in color and pattern may occur from one batch to another. This is the beauty of Rule of Three's original, bespoke fabric.

Please always reference an actual Rule of Three fabric sample, designs viewed on screen or printed from a document are not accurate for color or scale.