



Abacus

IN SEVEN COLORWAYS

Inspired by the French marbling pattern called "nonpareil" (unrivaled), Abacus explores the connection between mathematics and reality. With precise attention to color quantities, scales of movement and rhythmic intervals, it is a dramatic meditation on measurement and value.

Abacus

IN SEVEN COLORWAYS



KNOW

All Rule of Three fabrics are individually hand-marbled using the highest quality silks, leathers, Belgian linens, and cottons. Despite each textile's one-of-a-kind nature, our studio artists skillfully produce multiple yards in any given design and colorway creating a continuity throughout each production run. A cutting for approval is available for every order.

We love collaborating with designers and architects. Custom colorways are available for any of our designs.

CARE

Dry clean only.

Paper backing, knit backing, lamination and/or stain guard is available for an additional fee.

DETAILS

All designs are offered on 100% Silk, 100% Belgian Linen, and 100% Cotton Twill grounds. Available by the yard and sold exclusively to the trade.

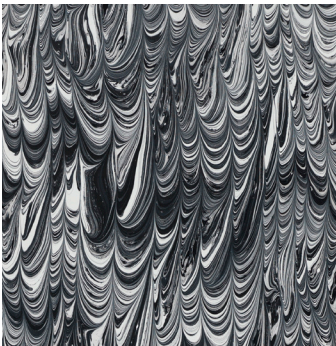
Typically our products are made to order with lead times averaging 4 - 8 weeks. If fabric is in stock the lead time will be less.

SIZING

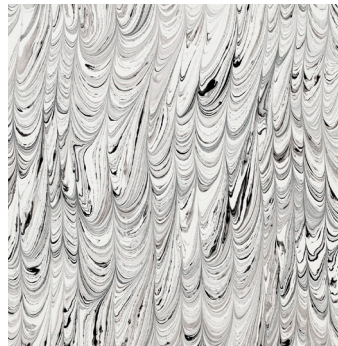
Fabric width is 43" - Pattern width is 40".
Fabric length is approximately 112" - Maximum pattern length is 108".

Minimum fabric order is 3 yards. A cut fee may be applied for orders fewer than 3 yards.

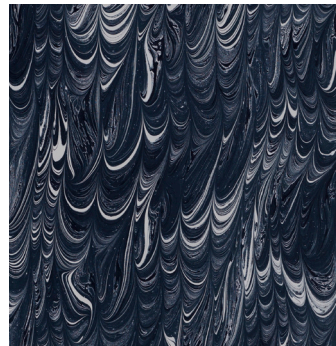
Pricing available upon request.



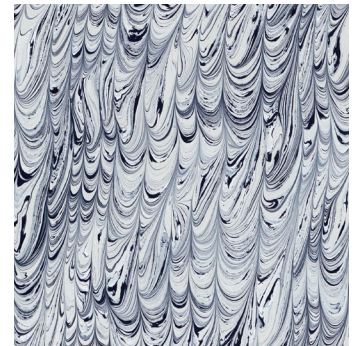
BLACK AGATE DARK



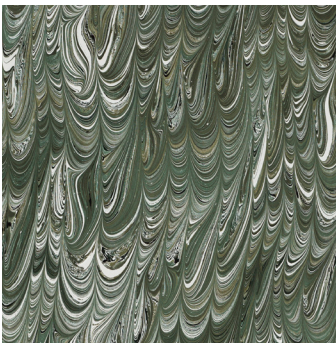
BLACK AGATE LIGHT



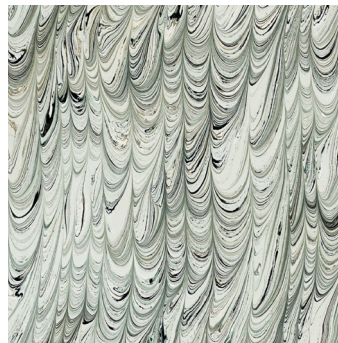
INDIGO DARK



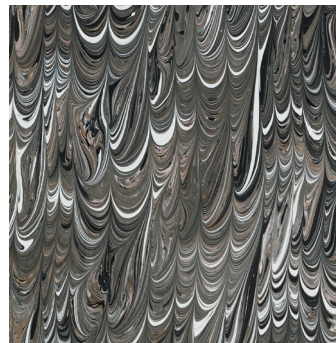
INDIGO LIGHT



MOSS AGATE DARK



MOSS AGATE LIGHT



TIGERS EYE DARK

Due to the handmade nature of our product and inherent characteristics of the marbling process, slight variations in color and pattern may occur from one batch to another. This is the beauty of Rule of Three's original, bespoke fabric.

Please always reference an actual Rule of Three fabric sample, designs viewed on screen or printed from a document are not accurate for color or scale.