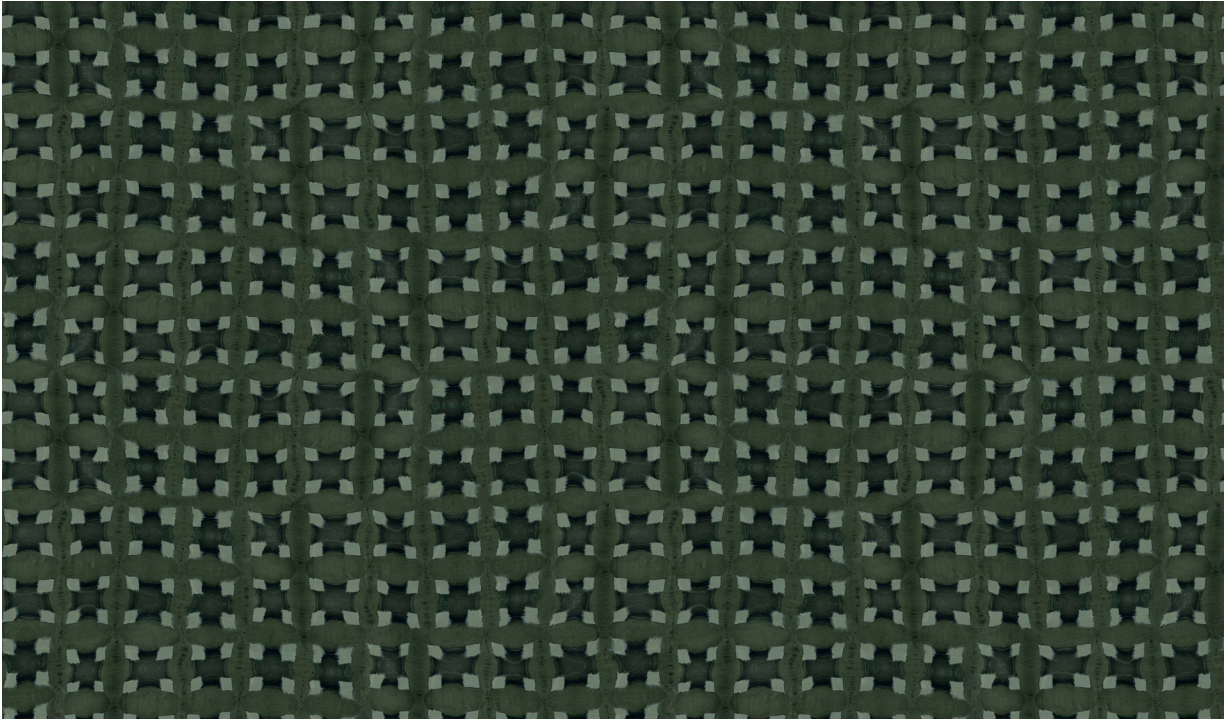


Basket Weave

FABRIC SPECIFICATIONS



Basket Weave Torrey Pine 54" wide x 1 yard pictured above

Designed in Los Angeles, printed in the USA using non toxic pigment inks.

Fabric Ground: 100% Linen

Fabric Width: 54"

Vertical Repeat: 17.5" Horizontal Repeat: 27"

Straight Match

Printed to order and sold by the whole yard.

Minimum: 5 yards

Lead time: 3 weeks, 1 week rush with fee

Retail Price: \$218/yard

Trade pricing available upon request.

Custom is available, please contact the studio for more information.

Care: Spot treat with soap and water.

Fabric is machine washable in cold water on the gentle cycle. Hang to dry. Some shrinkage may occur.

Due to the bespoke nature of our product and inherent characteristics of the printing process, slight variations may occur from one batch to another. All fabrics are final sale.

*Please always reference an actual Rule of Three sample, designs viewed on screen or printed from a document are not accurate for color or scale.