

LMArte™

LM

feel the difference



SCULPT MASTERPIECES





LMArte™ restorative instruments

ESTHETIC LAYERING SUCCESS

LM-Arte™ is a set of innovative instruments for esthetic restorations that is designed especially for composite layering. Each instrument is color-coded and named after its main function, enabling you to administer easy, efficient and quick restorative treatments. The lightweight and ergonomic LM™ handle design, together with high-quality tip materials, provides excellent tactile sensitivity and easy handling for the best clinical results.

COLLABORATION WITH STYLEITALIANO™

LM-Arte™ instrument series has been developed in collaboration with Styleitaliano™, a group of skilled dentists who share our passion for improving dentistry.

The Styleitaliano™ movement emerged from a simple idea of two friends - Dr. Walter Devoto and Dr. Angelo Putignano. The renowned experts in conservative and esthetic dentistry had noticed that although materials suitable for creating beautiful direct restorations were available, appropriate instruments for employing these successfully were lacking. With LM-Dental™'s dedication to manufacturing excellence the unique concept of LM-Arte™ instruments was developed, and it has been a breakthrough in esthetic dentistry.



BE PART OF THE SUCCESS!

Visit StyleItaliano™ website at www.styleitaliano.org for restorative clinical cases with LM-Dental™'s instruments



Follow and join the StyleItaliano™ community on social media channels



StyleItaliano™ is a growing community of skilled dental practitioners who contribute ideas to enhance the simplicity and predictability of everyday dental procedures. Today, it reaches thousands of dentists on social media through illustrative demonstration videos, lectures, courses and conferences.



VISIT THE WEBSITE
at www.lm-dental.com/LM-Arte
and be part of the success!

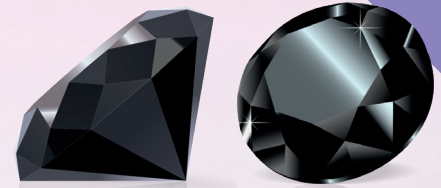
LMArte™ Dark Diamond edition

NEW!

PLEASANT AND PRECISE SCULPTING OF COMPOSITE

LM-Arte™ Dark Diamond instruments are the newest outcome of StyleItaliano™ and LM-Dental™ collaboration featuring exclusive coating for smooth and precise non-stick placement and sculpting of composite resins.

What do the clinical experts say? Scan the QR!



“

The sensitivity, flexibility and precision are the same as with conventional LM-Arte™ instruments, but the LM Dark Diamond™ coating eliminates the issue of resin sticking to spatulas, even for the most delicate resins.”

Dr. Paulo Monteiro, Honorary Member of StyleItaliano™

LM Dark Diamond™ offering unique benefits!

- Contemporary diamond-like carbon (DLC) coating reduces stickiness for smooth composite placement
- Hard surface protecting the tip from scratches
- Smooth surface for easy cleaning
- Dark coating color for minimal reflections, and maximal contrast against filling
- Ergonomic LM-ErgoSense® handle for excellent precision and feel

LM-Arte™ Dark Diamond set

Set of LM-Arte™ instruments with exclusive non-stick LM Dark Diamond™ coating in LM-Servo™ 5 cassette including Eccesso DD, Modella DD, Fissura DD, Applicata DD and Condensa DD instruments

LM-ErgoSense® 6845ES



PRODUCT RANGE WITH NON-STICK COATING



LM-Arte™ Eccesso DD LM-ErgoSense® 307-308DDES



LM-Arte™ Modella DD LM-ErgoSense® 442-443DDES



LM-Arte™ Fissura DD LM-ErgoSense® 481-487DDES



LM-Arte™ Applicata DD LM-ErgoSense® 46-49DDES



LM-Arte™ Condensa DD LM-ErgoSense® 488-489DDES

COMPREHENSIVE INSTRUMENT RANGE



LM-Arte™ Applicata

LMErgoSense® 46-49ES

LMErgoMax™ 46-49XSI



LM-Arte™
Applicata Twist

LMErgoSense® 464-494ES

LMErgoMax™ 464-494XSI



LM-Arte™ Modella

LMErgoSense® 442-443ES

LMErgoMax™ 442-443XSI



LM-Arte™ Condensa

LMErgoSense® 488-489ES

LMErgoMax™ 488-489XSI



LM-Arte™ Misura

LMErgoSense® 496-497ES

LMErgoMax™ 496-497XSI



LM-Arte™
Posterior Misura

LMErgoSense® 498-499ES

LMErgoMax™ 498-499XSI



LM-Arte™
Cusp Misura

LMErgoSense® 468-469ES

LMErgoMax™ 468-469XSI



LM-Arte™ Fissura

LMErgoSense® 481-487ES

LMErgoMax™ 481-487XSI



LM-Arte™ Eccesso

LMErgoSense® 307-308ES

LMErgoMax™ 307-308XSI



LM-Arte™
Solo Anterior

LMErgoSense® 431-433ES

LMErgoMax™ 431-433XSI



LM-Arte™
Solo Posterior

LMErgoSense® 434-438ES

LMErgoMax™ 434-438XSI



LM-Arte™
Replica Posterior

LMErgoSense® 448-449ES

LMErgoMax™ 448-449XSI

SELECTED INSTRUMENT SETS FOR YOUR UNIQUE RESTORATIONS



LM-Arte™ Set

Full set of instruments for anterior restorations in LM-Servo™ 5 cassette including

- LM-Arte™ Eccesso
- LM-Arte™ Misura
- LM-Arte™ Fissura
- LM-Arte™ Applicata
- LM-Arte™ Condensa

LMErgoSense® 6840ES

LMErgoMax™ 6840XSI



LM-Arte™ Posterior Set

Full set of instruments for posterior restorations in LM-Servo™ 5 cassette including

- LM-Arte™ Posterior Misura
- LM-Arte™ Cusp Misura
- LM-Arte™ Fissura
- LM-Arte™ Modella
- LM-Arte™ Condensa

LMErgoSense® 6844ES

LMErgoMax™ 6844XSI



LM-Arte™ Complete Set

Full set of instruments for any restoration cases in LM-Servo™ 8 cassette including

- LM-Arte™ Eccesso
- LM-Arte™ Misura
- LM-Arte™ Applicata
- LM-Arte™ Posterior Misura
- LM-Arte™ Cusp Misura
- LM-Arte™ Fissura
- LM-Arte™ Modella
- LM-Arte™ Condensa

LMErgoSense® 6848ES

LMErgoMax™ 6848XSI

Handle options



LMErgoSense®

All LM-Arte™ instruments are available with LMErgoSense® handle with larger diameter and design providing exceptional grip proven to be ergonomic and efficient in scientific clinical testing. Ø 13.7 mm

LM-ErgoSense® handle is available with an integrated LM DTS™ RFID tag, a unique feature for improved asset management and patient safety. See more at www.dentaltracking.com



LMErgoMax™

Uncoated instruments are available also with the classic LMErgoMax™ ergonomic handle design which functions well in all clinical procedures and guarantees excellent tactile sensitivity. Ø 11.5 mm

LMArte™ Solo Anterior and Posterior

INSTRUMENT DUO FOR SIMPLIFYING YOUR DAILY CASES

LM-Arte™ Solo instruments are ideal for simplifying your daily cases: with just two instruments, you can perform most of your high-end anterior and posterior restorations.

These instruments simplify everything from modeling to ergonomics and even hygiene, with fewer instruments needed on the tray. Streamline your restorative instrumentation with this duo that is all you need for your daily anterior and posterior direct composite restoration cases.



HOW TO USE

Scan the QR for LM-Arte™ Solo instruments how to use video





ONE INSTRUMENT FOR DIRECT VENEERING LM-Arte™ Solo Anterior

Instrument for high-end esthetic anterior restorations. Rounded and straight spatulas are designed for modeling anterior teeth, especially labial surfaces.

Sharp tip
Precision modeling
Micromodeling
Limit marking
Scratching

Straight edges
Scraping

Flat profile
Flattening
Uniform

Thin blade
Proximal modeling

Convex profile
One-point modeling
Create depressions
Create buccal profile
Create cervical profile
Access difficult areas

Angled edge
Definition
Scraping

Sharpened edges
Cut, split, separate
Marginal ridges

Rounded tip
Delicate delimitation
Cervical contouring



ONE INSTRUMENT FOR POSTERIORES LM-Arte™ Solo Posterior

Instrument for high-end posterior composite restorations. The plugger end is designed for bulk filling and composite material modeling. The sharp end enables contouring of the occlusal surface anatomy.

Flat profile
Big excess removal
Medium excess removal

Flat end
Plugger

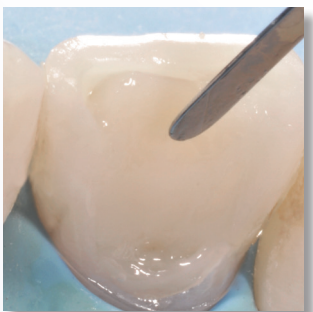
4-5 mm bulk-fill safety area
Probe for bulk-fill materials

Angulation
Access for deep cavities

Semi-rounded edges
Slope forming
Excess removal
Margin removal

Tapered profile
Fine excess removal
Slope modeling
Secondary anatomy

Sharp tip
Precision modeling
Micromodeling
Limit marking
Scratching
Flow distribution
Bubble elimination

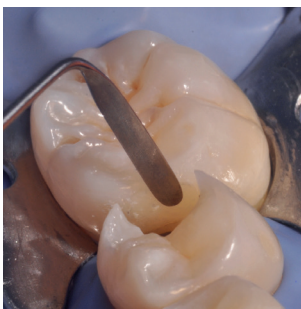


APPLY ELASTICALLY

LM-Arte™ Applica

A very thin, flexible spatula designed for transporting and esthetic modeling of the composite. The flexible working end gently and precisely sculpts composite layers to imitate the natural shape of the tooth. The thin tip of the Applica enables modeling in narrow spaces or against the matrix band. Instrument is available with non-stick LM Dark Diamond™ coating.

HOW TO USE

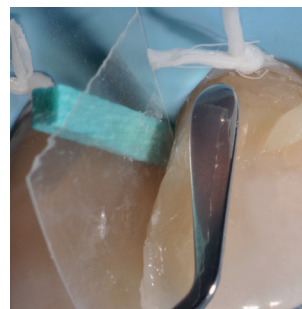


APPLY WITH A TWIST

LM-Arte™ Applica Twist

Especially fine, flexible and narrow spatula for composite modeling. The Applica Twist is used for easy modeling in the approximal spaces and marginal ridges in the matrix. Its bent tips make it possible to reach awkward areas without complicating the working position of the hand unnecessarily.

HOW TO USE



MODEL FLEXIBLY

LM-Arte™ Modella

Especially fine, wide spatula for composite modeling. Particularly suited to large tooth surfaces such as the buccal surfaces of the incisors. The wide spatula end flattens the composite effectively. The flexibility, delicacy and sharpness of the tip helps to create precise esthetic details. The spatula works well for applying the composite from a syringe. Instrument is available with LM Dark Diamond™ coating.

HOW TO USE





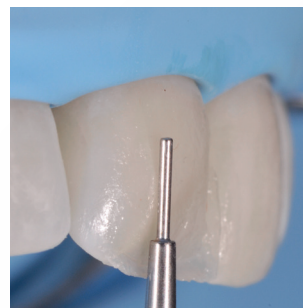
PUSH SOFTLY

LM-Arte™ Condensa

A long, round plugger designed especially for modeling a composite. Its angulated shanks enable unrestricted access to all cavities. Condensa has both a thick and a thin tip that can be used in cavities of different sizes, in both anterior and posterior areas. The rounded working end enables a delicate compacting of composite without any risk of adhesion. Instrument is available with non-stick LM Dark Diamond™ coating.



HOW TO USE



APPLY EVENLY

LM-Arte™ Misura

A unique instrument used to apply the correct horizontal and vertical thicknesses of composite layers on the anterior restorations. After layering but before polymerization of the dentine composite, the

thinner, cylindrical tip is placed on the natural tooth enamel. The unpolymerized composite below the cylindrical tip is then gently modelled, leaving an optimal space for the enamel composite layer. The thicker, short tip of the Misura is placed horizontally at the margin of the prepared cavity, leaving the edge of the tip on the original enamel. This allows you to determine the right amount of transparent composite to apply on the finishing line. The final esthetic restoration consists of correctly balanced opaque and translucent composites, avoiding the unpleasant gray effect of some composites.

HOW TO USE





FILL EVENLY

LM-Arte™ Posterior Misura

Posterior version of the popular Misura instrument. Designed for providing the required vertical thickness of composite layers on posterior restorations. The forked tip of the instrument allows modeling of the proximal wall to match the height and anatomy of the neighboring tooth with the presence of a matrix.

HOW TO USE



EVALUATE EXPLICITLY

LM-Arte™ Cusp Misura

Unique instrument for estimating cusp thickness and height for evaluating the need for cusp preparation when performing adhesive restorations. Ideal for evaluating the strength of the natural tooth structure and choosing the restorative technique to be used. If the forked instrument tip penetrates up to its marks, the tooth structure is too weak to withstand occlusal forces with a direct restoration, and other clinical options must be considered.

HOW TO USE



NEW!



Adapt



Shape



Replicate

REPLICATE EASILY

LM-Arte™ Replica Posterior

Clever instrument designed for simplifying occlusal modeling of posterior teeth in direct composite restorations. The instrument makes occlusal modeling fast, simple and predictable. Occlusal anatomy of single tooth can be made easily guided by the buccal cusps using replica technique with this specific instrument. Instrument has one concave and one convex side.



“I can make modeling within seconds with simple steps by using Replica Posterior instrument and technique.”

Dr. Osama Shaalan,
Gold Member of StyleItaliano™



Concave surface
Cusp accentuation
Ridge formation
Cusp demarcation
Removing excess composite

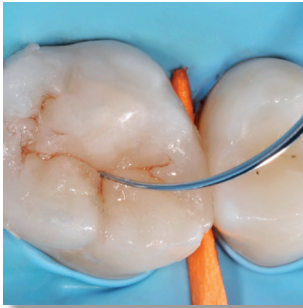
Curved sharp edge for
Cutting
Splitting
Making grooves
Cusp demarcation
Marking curve

Convex profile
Carrying composite
Adaptation
Narrowing grooves
Making flat surface
Smoothing
Making depressions

Side edges
Cutting
Splitting
Making lines

HOW TO USE





SCULP DELICATELY

LM-Arte™ Fissura

A modeling instrument with extremely sharp pointed tips. The conical tip is perfect for sculpting the anatomy of the occlusal area of the posterior teeth with just one instrument. The fine, probe-shaped tip is optimal for modeling fissures and mamelons as well as for layering characterization composites and sealants. The flexibility of the Fissura enables gentle probing to ensure there is no excess bonding resin remaining on tooth surfaces. Instrument is available with non-stick LM Dark Diamond™ coating.

HOW TO USE

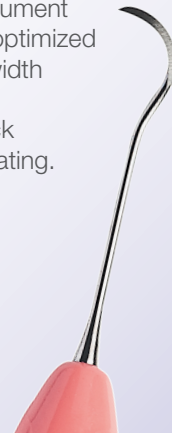


FINISH NEATLY

LM-Arte™ Eccesso

An instrument designed for the removal of composite and bonding residue. The special angulated working ends of the Eccesso are ideal for the removal of excess from cervical anterior and interproximal molar areas. This fine but robust instrument is characterized by the optimized length, thickness and width of its blade. Instrument is available with non-stick LM Dark Diamond™ coating.

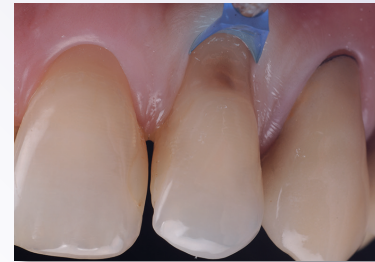
HOW TO USE



OVERCOME THE GINGIVAL RETRACTING CHALLENGE - LMGengiva™

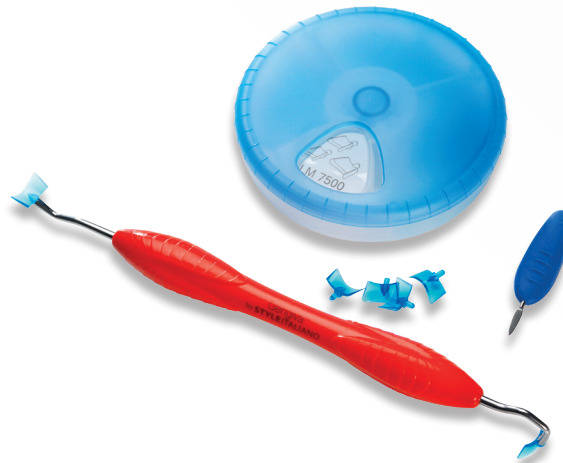
The aim in restorative treatment of a cervical lesion is to achieve perfect margin sealing, a strong bond and optimal polishing of the composite material. Mechanical gingival retraction in cervical restorations can be traumatic if improperly performed.

The LM-Gengiva™ instrument with gingival retractors is used to avoid injuring the gingiva unnecessarily and obtain the best clinical result. With this method, the desired end result is achieved: the soft tissue is not harmed and the esthetic requirements are met.



GINGIVAL RETRACTORS

- Retract the gingiva from the restoration
- Hardness of the plastic tip allows for a strong retraction
- The plastic tips allow a certain flexibility for more adaptation while pressing
- The tip acts as a tight seal between the gingiva and tooth
- Protects the gingiva and reduces the likelihood of debonding failure
- The bonding interface and the gingival margin can be seen clearly; ideal contrast with soft tissues
- Can be customized with a drill to fit a convex or concave root detect
- No bonding of the adhesive materials to the tip surface
- No interference with polymerization
- Disposable



LM-Gengiva™ gingival retracting kit

LMErgoSense® 7556KES

LMErgoMax™ 7556KXSI

Incl. LM-Gengiva™ hand instrument, blue gingival retractors (assortment of around 90 pcs, 30 pcs/size) and LM-MultiLever™ for the removal of plastic working ends.

LM Dental™

 LM-Instruments Oy

Norrbyn rantatie 8 | FI-21600 Parainen | Finland

Tel. +358 2 4546 400

info@lm-dental.com | www.lm-dental.com

Exclusively distributed by Curion



2571 Smith Street Richmond, BC., V6X 2J1 Canada

EN: 1.800.667.8811 | FR: 1.800.211.1200

curion.ca | wecare@curion.ca

