

Introducing >

The **NEW** Deep Margin Elevation Kit

Predictably relocate deep margins for better final restorations.

Developed with leading biomimetic clinicians, Garrison's specialized materials provide the extra matrix band seal and control required to successfully relocate deep margins.

The conservative deep margin elevation procedure allows for the maximum conservation of natural tooth structure while helping to avoid more invasive procedures such as crown lengthening. Relocated supragingival margins facilitate easier scanning/impressions and proper isolation for improved bonding of inlays, onlays and direct final restorations.

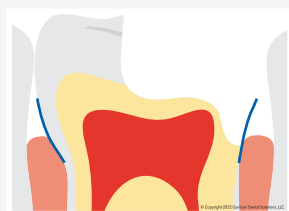
Reel Tight:

Extra-narrow enhanced conical design slides subgingivally to properly seal deep margins.



Reel Easy:

Lightweight retainerless delivery system makes placement and tightening simple.

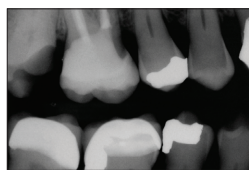


Reel Fast:

Pre-loaded reels and removable application handle mean rapid deployment and maximum access.



Clinical Case: The margin elevation technique allows proper isolation and elevation of deep margin areas prior to restoring with an indirect partial coverage restoration (inlay or onlay). The use of the Garrison® Reel Matrix™ margin elevation band allows proper adaptation and seal of these deep areas so that a composite margin elevation can be performed.



Pre-op X-ray shows the margin location for #2 subgingivally prior to elevation.



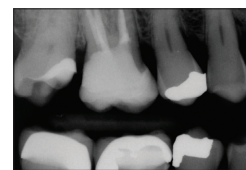
Seat the margin elevation band subgingivally. The narrowness of the matrix will allow it to slide subgingivally and seal the margin efficiently.



Seal the dentin and elevate the deep margin with restorative composite.



Remove the matrix and finish with a #12 blade to remove any flash. The deep margin has been relocated 1-2 mm supragingival for predictable isolation and delivery of an indirect bonded restoration.



Post-op X-ray shows the completed margin elevation prior to final restoration being completed.