

Rugged Case Gas Strut Install Instructions

****NOTE: SECTION 1 ON PAGE 1 IS FOR THE DOUBLE GAS STRUT INSTALL INSTRUCTIONS.**

SECTION 2 ON PAGE 10 IS FOR THE SINGLE GAS STRUT INSTALL INSTRUCTIONS.

Tools Required:

- Drill
- 5/32" drill bit
- Rivet gun
- Tape measure
- Marker



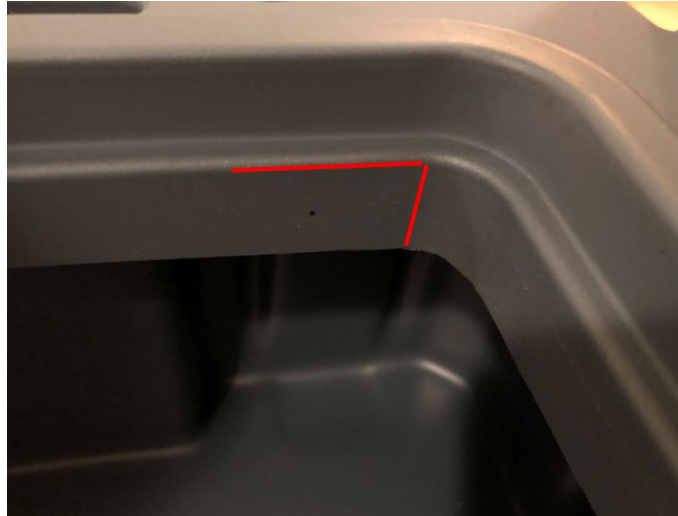
SECTION 1: DOUBLE GAS STRUT INSTALL INSTRUCTIONS

Step 1: Install lower strut mount:

- Locate one of the strut mounts that look like this:



- Open the case and allow the lid to rest in the open position. You will be mounting the first strut mount in the lower section of the case.
- Align the strut mount such that the long flat side is flush with the top edge of the innermost lip and one curved sits at the beginning of the corner radius:



- Once the bracket is in position mark the center hole:



- Using the 5/32" drill bit drill a hole at the marked point



- Using one of the rivets hold the bracket in place temporarily



- With the bracket in place mark 2 more places at the center of the slots in the bracket



- Remove the bracket and drill two more holes where you just marked



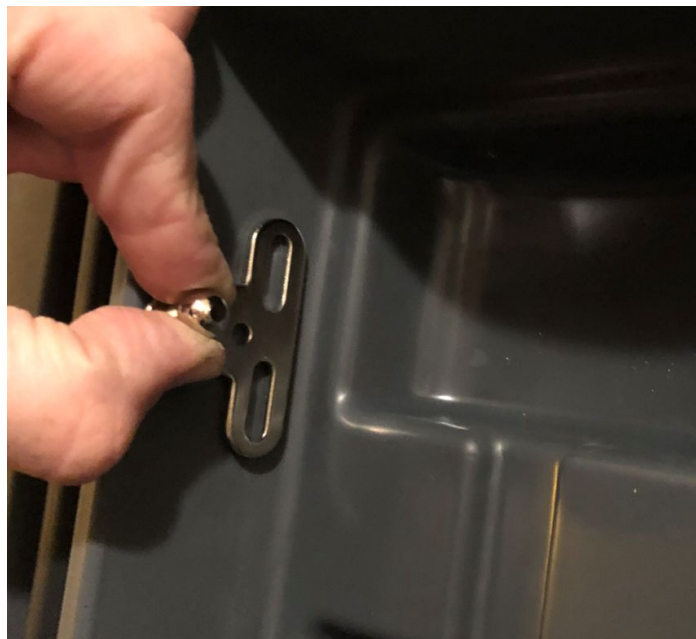
- Using your pop rivet gun. Secure the strut mount bracket using 3 of the included rivets

Step 2: Install upper strut mount

- You will be installing another strut mount bracket to the inside edge of the lid on the same side of the case that you just mounted the lower bracket.
- Measure from the bottom edge of the inner lip on the lid 9.5" up the side and make a mark.



- Align the center of the upper strut mount with the mark you just made and align the long flat edge of the bracket with the inner radius of the lid.



- Mark the center hole and repeat the steps for mounting the lower mount



Step 3: Install the gas strut

- Now that you have installed both of the strut mount brackets successfully it is time to install the gas strut.
- The first thing to note is that the correct way to install your gas strut is with the stanchion in the down position.

- Align the hole in the gas strut head on the stanchion side with the ball stud on the lower gas strut mount and press in until it clicks into place.

- Repeat the same thing for the top mount. You may have to adjust the position of the lid to line up the gas strut with the ball stud.

- Cycle the lid once to ensure that you installed the gas strut correctly.
- Once you have confirmed the lid can close, repeat these steps on the opposite side of the hinge.

SINGLE GAS STRUT INSTALL INSTRUCTIONS

Step 1: Install lower strut mount:

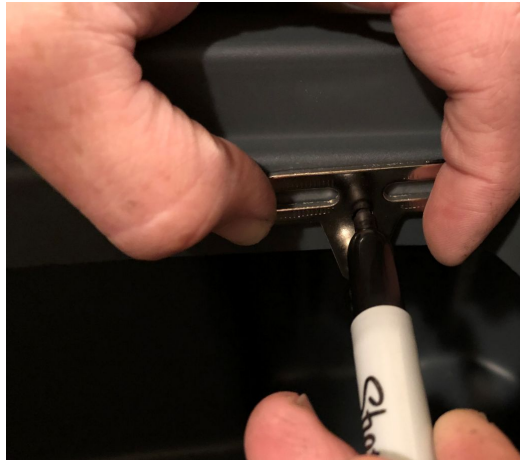
- Locate one of the strut mounts that look like this:



- Open the case and allow the lid to rest in the open position. You will be mounting the first strut mount in the lower section of the case.
- Using the measuring tape make a mark on the lower inner most lip of the case at 8.25" from the inside lip of the hung side of the case.



- Align the strut mount such that the long flat side is flush with the top edge of the innermost lip and aligned with the mark you just made at 8.25" and mark the center hole position.



- Using the 5/32" drill bit drill a hole at the marked point



- Using one of the rivets hold the bracket in place temporarily



- With the bracket in place mark 2 more places at the center of the slots in the bracket



- Remove the bracket and drill two more holes where you just marked



- Using your pop rivet gun. Secure the strut mount bracket using 3 of the included rivets

Step 2: Install upper strut mount

- You will be installing another strut mount bracket to the inside edge of the lid on the same side of the case that you just mounted the lower bracket.
- Align the strut mount such that the long flat side is flush with radius at the top and the right side is in contact with the beginning of the curve on the inner edge of the lid



- Mark the center hole and repeat the steps for mounting the lower mount



Step 3: Install the gas strut

- Now that you have installed both of the strut mount brackets successfully it is time to install the gas strut.
- The first thing to note is that the correct way to install your gas strut is with the stanchion in the down position.

- Align the hole in the gas strut head on the stanchion side with the ball stud on the lower gas strut mount and press in until it clicks into place.

- Repeat the same thing for the top mount. You may have to adjust the position of the lid to line up the gas strut with the ball stud.

- The installed strut on the 82L Rugged Case should look like this:



- Cycle the lid once to ensure that you installed the gas strut correctly.

**NOW GET OUTSIDE AND ENJOY YOUR NEW GEAR!!
YOUR SUPPORT MEANS THE WORLD TO US.THANK YOU.**

