

matki

SHOWERING

WETROOM WALK-IN

AWL1500

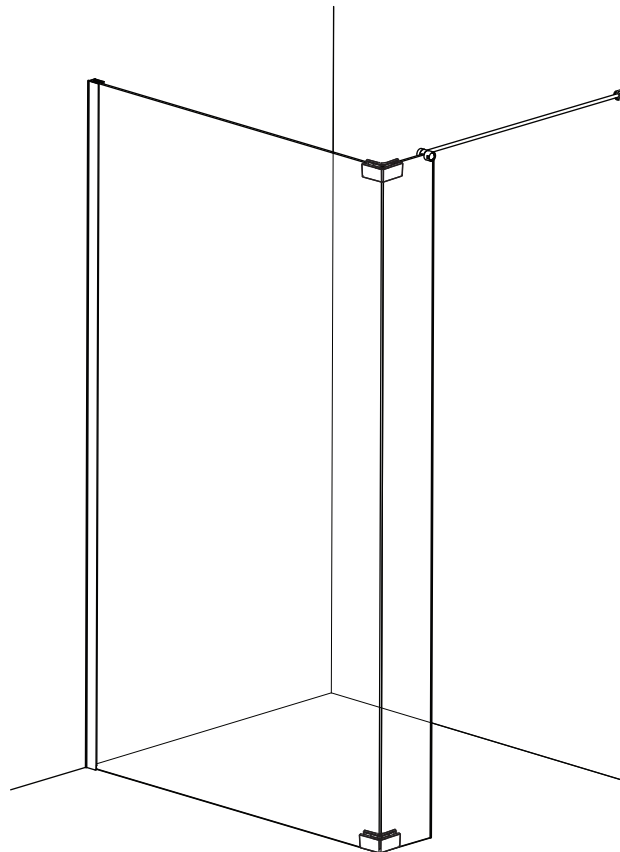
AWL1200

AWL900

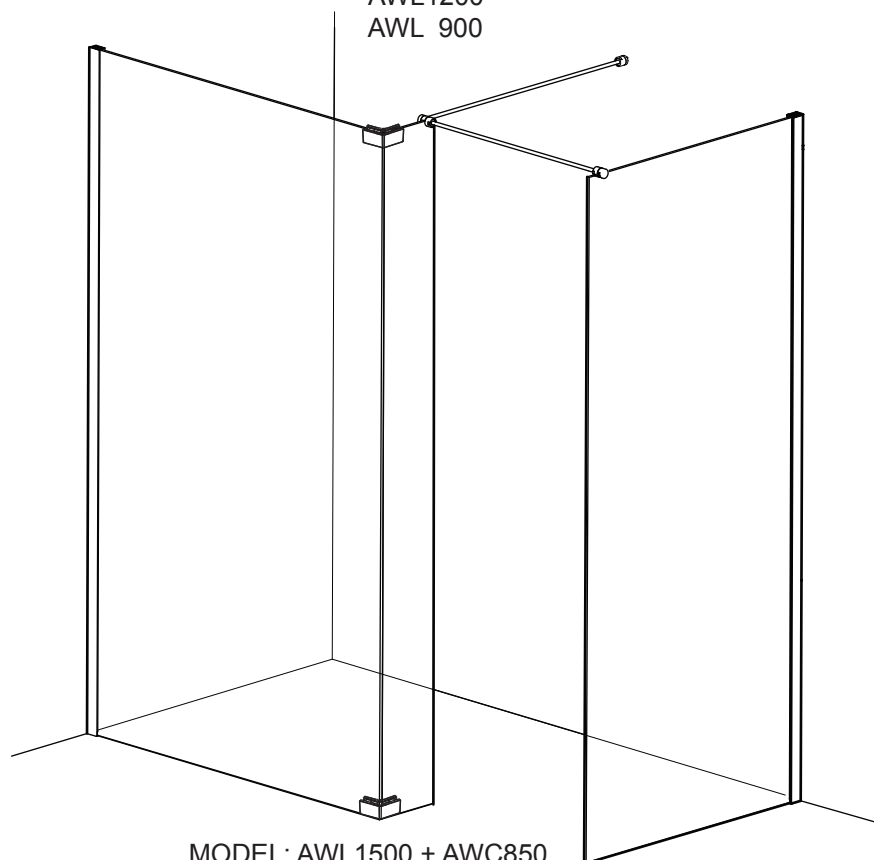
AWC850

INSTALLATION

PARTS LIST



MODEL: AWL1500
AWL1200
AWL 900



MODEL: AWL1500 + AWC850
AWL1200 + AWC850
AWL 900 + AWC850

MATKI PLC, CHURCHWARD ROAD, YATE, BRISTOL, BS37 5PL
TELEPHONE:01454 328816 (AFTER SALES) FAX:01454 328821 EMAIL:techsupport@matki.co.uk

IMPORTANT

Before disposing of carton and/or commencing assembly, please check all the parts to ascertain that none are missing and they are all undamaged. No claim for missing/damaged parts will be accepted once the packing carton has been disposed of and/or assembly has commenced.

In case of query contact your Stockist with details of model number and details of serial number.

Due to the weight of the surround we recommend that two people are available for assembly.

PREPARATION

Please read complete installation instructions before fitting. **The surround assembly should be installed onto waterproof wall and floor covering.** The AWL Wetroom Walk-in Panel can be positioned on a waterproof floor or along the rim of a shower tray. If fitting onto a Matki Finline shower tray position the panel 10mm in from the outside edge of the tray to provide a sealing area. Spray from the shower may extend beyond the entrance and we recommend waterproofing of the adjacent area, sloping towards the drain position.

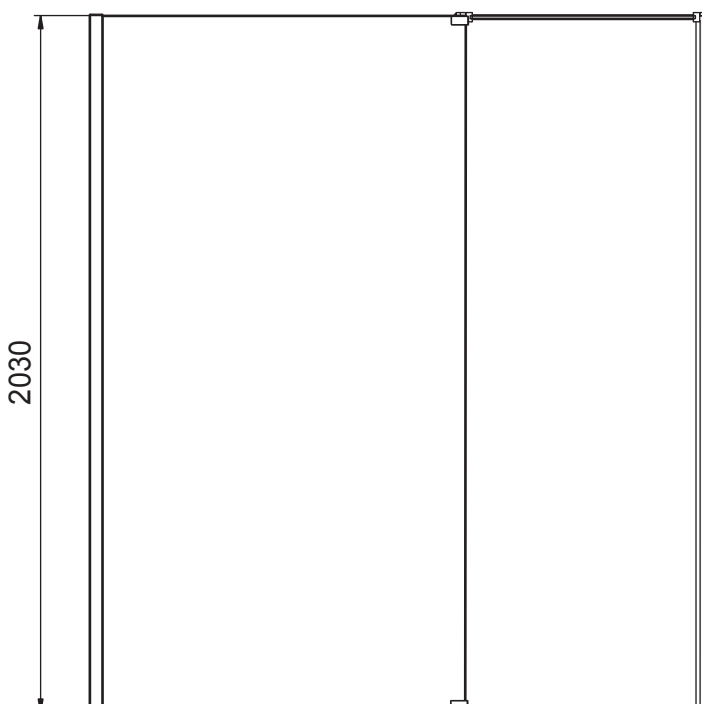
Carefully remove panel from carton, do not place glass on hard floor or expose edges to impact.

CAUTION: TEMPERED GLASS CANNOT BE CUT, POLISHED METAL AND CHROME CAN BE SCRATCHED.

TOOLS REQUIRED

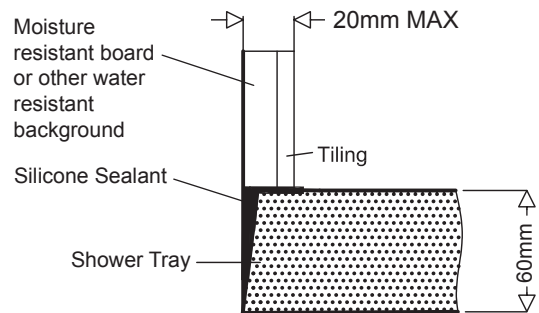
Masonry Drill bit 6mm, Tape Measure, Screw Drivers, Safety Glasses, Electric Drill, Level, Pencil, Adjustable Spanners x 2, Hacksaw

DIMENSIONS

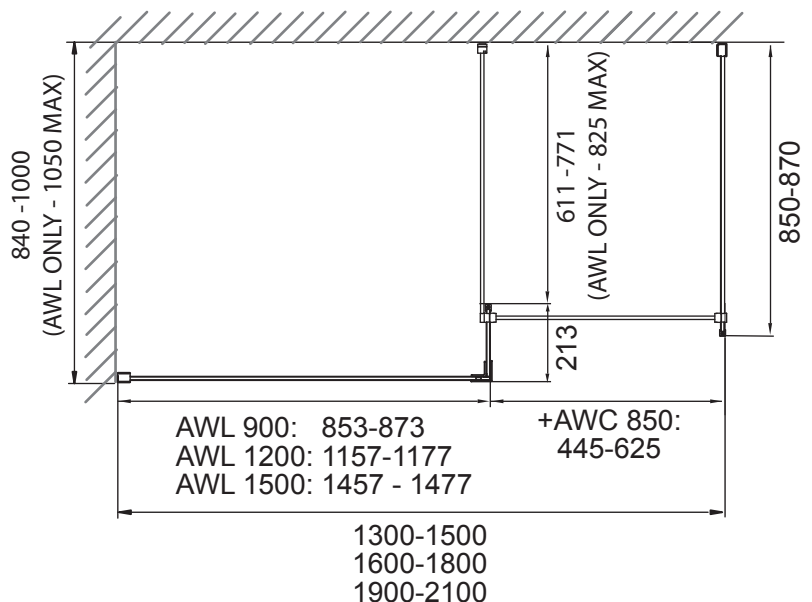


Dimensions are approximate due to nature of materials used

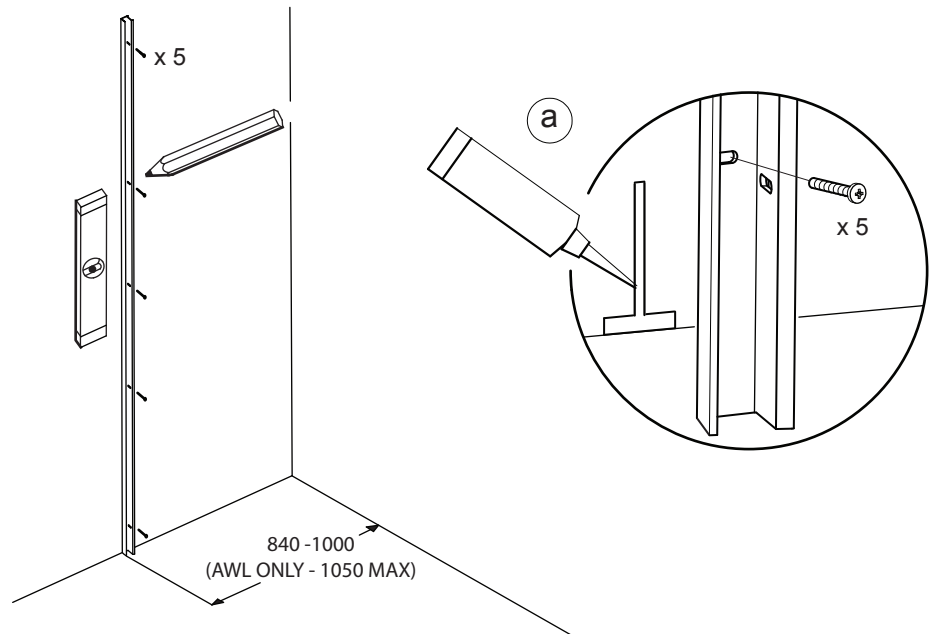
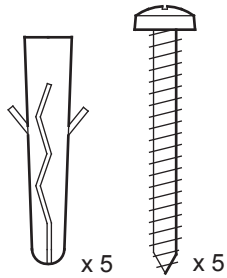
TYPICAL INSTALLATION OF MATKI FINELINE SHOWER TRAY



Ensure top of shower tray is level



STAGE 1

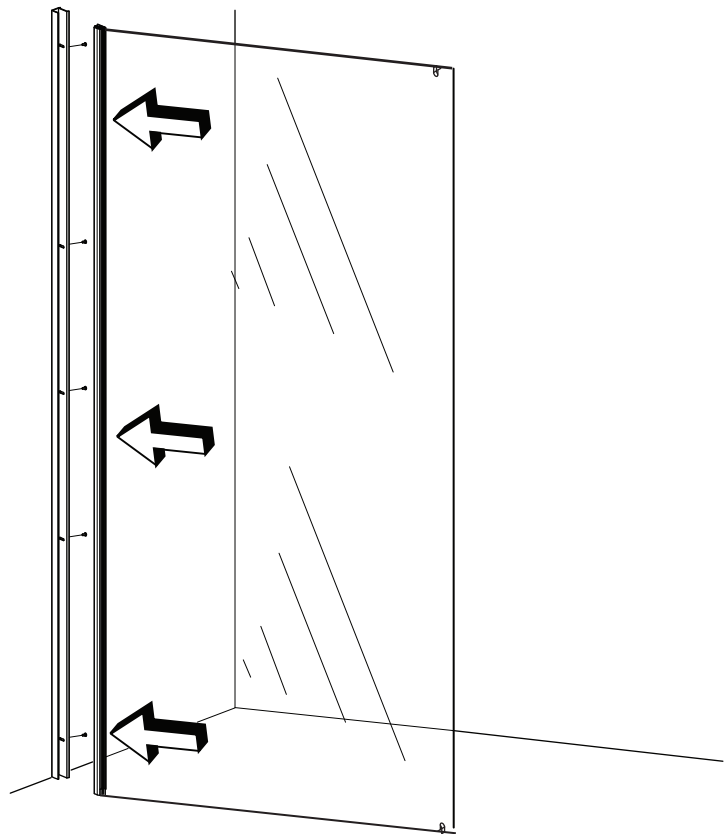
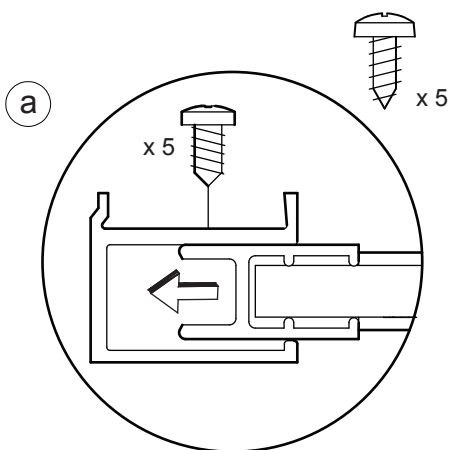
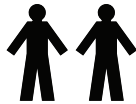


This stage is describing the Wall mount installation.

Position the Wall mount on to the wall in the desired position. Please see dimension on previous page for Max and Min for model size. Dimension 840 to 1050 (depending on model) is measured from the Finished wall surface to the outside face of the Wall mount. Position the Wall mount so that the adjustment slots on the side of the Wall mount are facing inside the product.

Plumb the Wall mount for upright and mark the fixing holes on the wall in the centre of the slots in the back face of the Wall mount. Drill the fixing holes in the wall with a 6mm drill bit and insert the Wall plugs. Clean the area. Apply Silicon sealant to the area behind the Wall mount between the floor or tray if fitted and the tiles and 100mm up the wall, central to the width of the Wall mount (a). Fit the Wall mount with the 5 No. 8 x 32mm Pan head screws (a) (Kit of Parts).

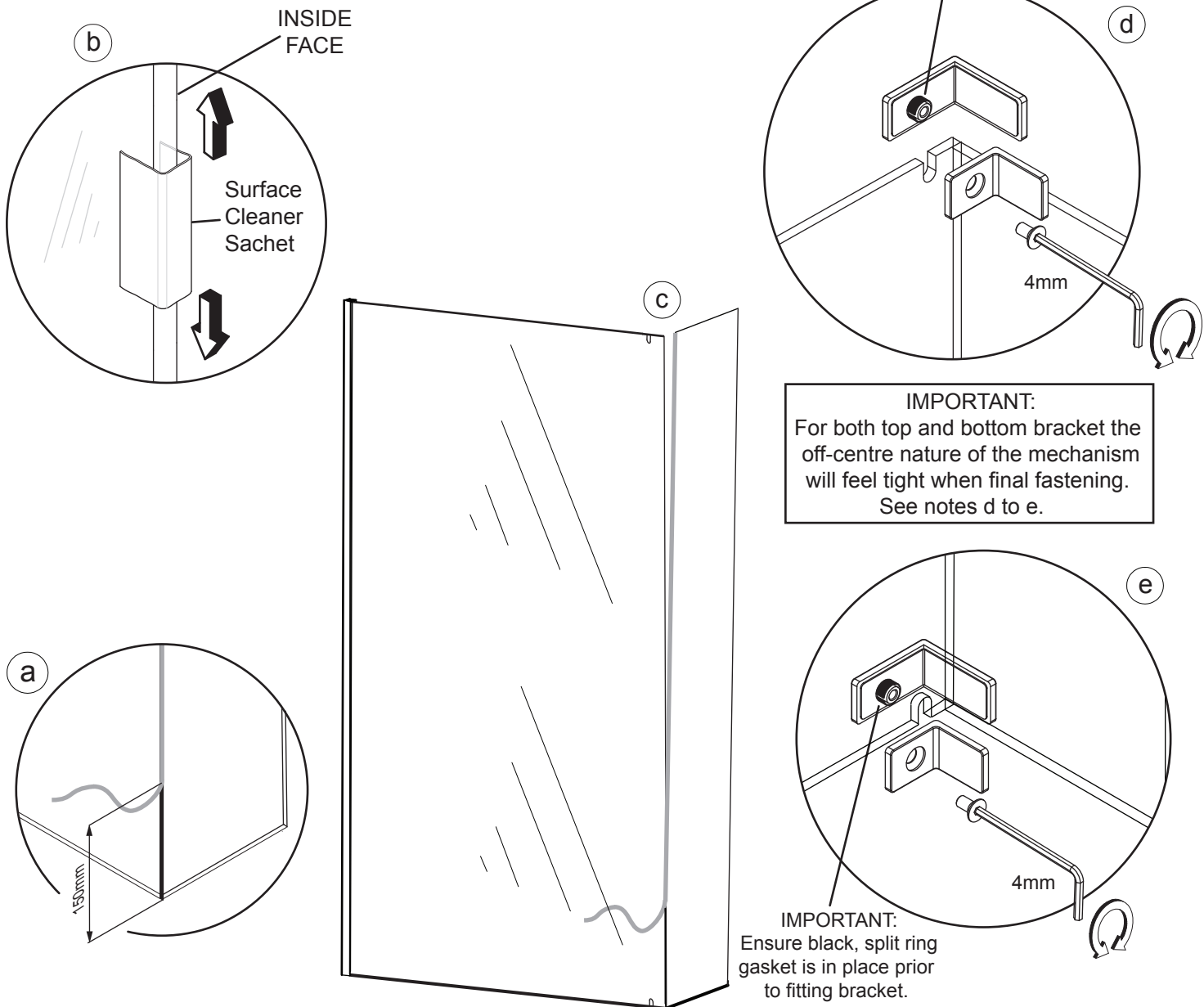
STAGE 2



This stage is describing the fitting of the AWL panel. We recommend two people are available for this stage.

Carefully lower the glass panel down into the Wall mount and onto the floor (a). Secure the glass panel to the Wall mount using the 5 No.8 x 9.5mm Pan head screws (a).

STAGE 3



This stage explains the joining of the panels and fitting of the Corner Brackets.

a. Before fitting the Side panel, peel back approximately 150mm of the yellow backing film from the Bonding tape that is on the edge of the Side panel. Peel the backing film from the bottom upwards to aid removal of the film once Side panel is in position.

b. Before fitting the Side panel, clean the face of the Front panel glass that will be bonded to the Side panel using surface cleaner sachet supplied in the kit of parts.

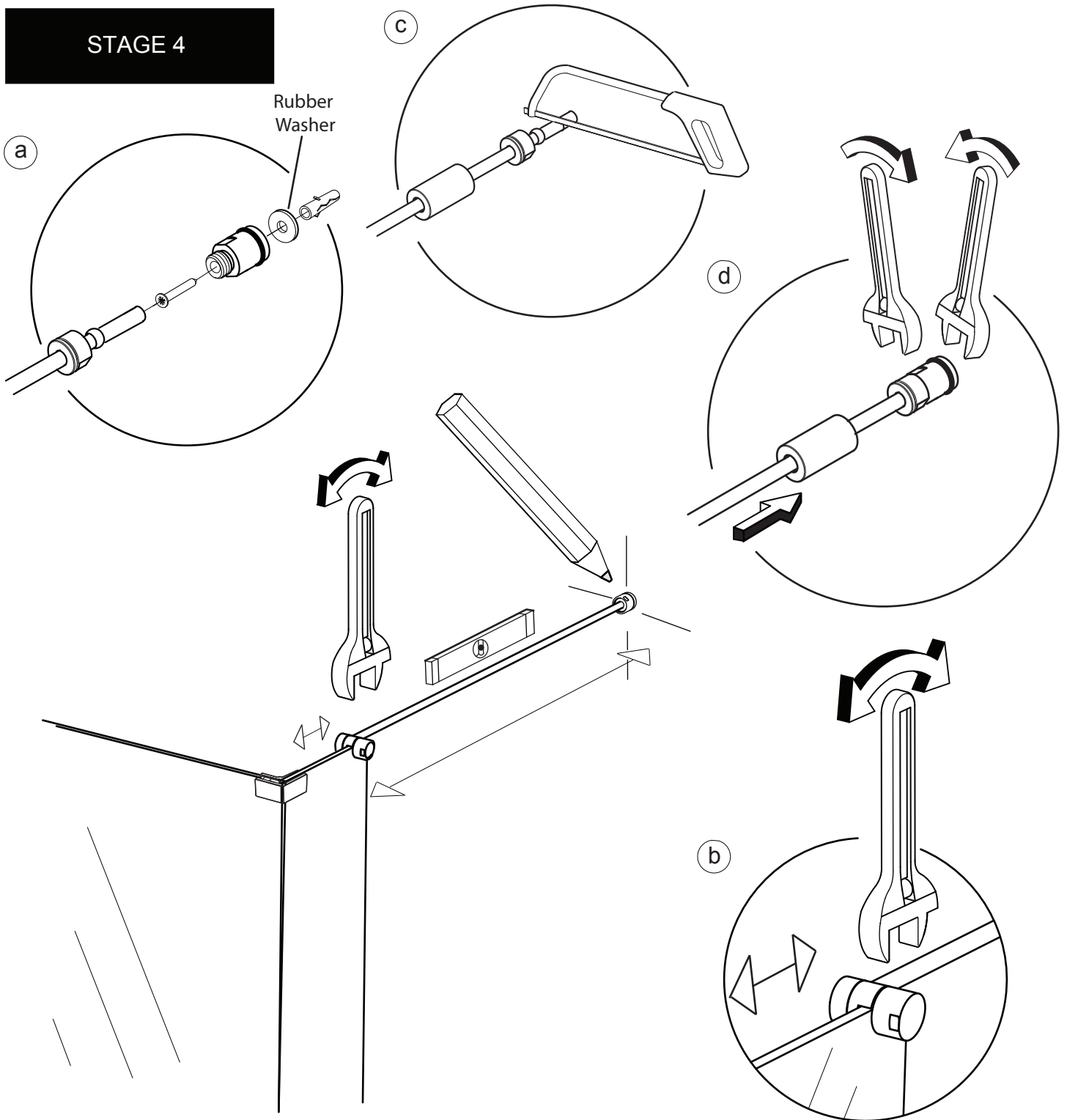
c. Bonding of corner joint between panels: Carefully move the Side panel away from the Front panel at the top, maximum gap 15mm, to create a 'V' shaped gap between the Side panel and Front panel. Slowly remove the backing film from the removed edge working upwards aligning the glass face and edge. Press the glass together as the backing film is removed, when 300mm from the top remove all the backing film and press firmly together.

d. Fitting of the Top Corner Brackets: Disassemble the bracket and slot over the top of the glass. Retighten the bracket using the 4mm allen key. **Important:** The final fixing of the bracket will seem 'over tight' when aligning the screw - this is the 'off-centre' nature of the mechanism designed into the bracket to eventually tighten the panels together. The compression of the gaskets will allow the bracket to fit together and for the screw head to recess into the countersunk feature in the bracket backplate.

e. Fitting of the Bottom Corner Brackets: Disassemble the bracket and place the bracket either side of the glass. Fit back together through the glass using the screw and tighten using the 4mm allen key provided - as above (d).

Fit the screw cover caps and allow 12 hours for the bond to cure fully before showering.

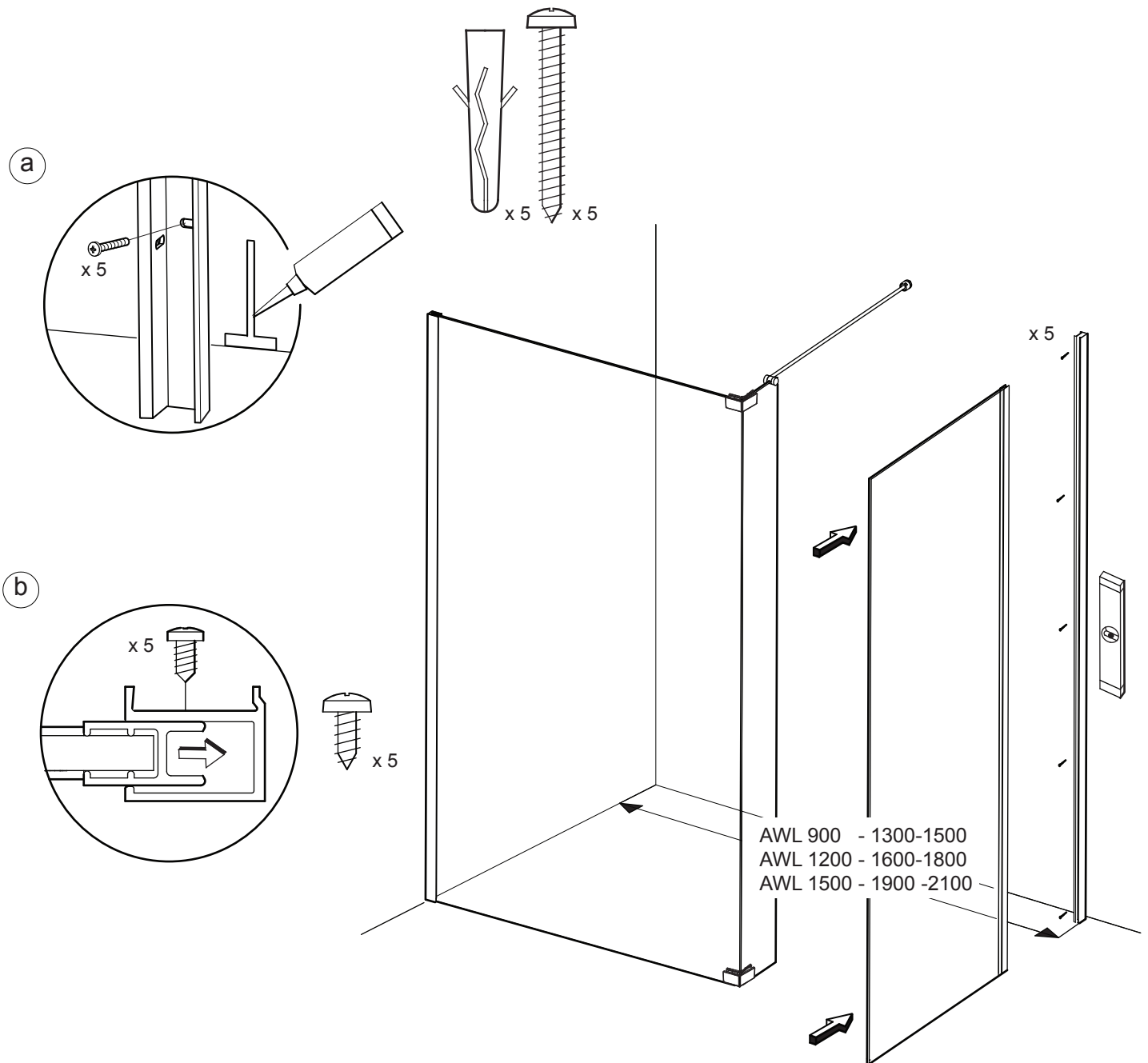
STAGE 4



This stage is describing the fitting of the Wall brace.

Unscrew the clamp body until the Glass clamp easily fits over the glass (b). Place the Brace carefully on to the top of the L-Shaped panel with the Compression wall plate back to the wall. If the Brace is too long, accurately measure and mark the length of the Brace bar to be removed (the Brace bar is offset 7mm from the wall inside the Wall plate) unscrew the Compression wall plate and nut to expose the end of the Brace bar and set aside (a) Cut to length (c).

Using a level, plumb and mark the centre of the Wall plate on the wall. Drill the fixing hole in the wall and insert the Wall plug. Fix the Wall plate to the wall using the No 8 x 32mm Csk screw ensuring the Rubber washer (Kit of Parts) is fitted behind the Wall plate (a). Reassemble the Compression fitting at the wall side (**ensure the Wall plate cover is fitted to the Bar at this point**). Carefully fit the Brace over the glass panel and screw the Brace nut onto the Wall Plate (d). Using spanners, firmly tighten the Brace nut onto the Wall plate until fully tightened (d). Lightly tighten the Brace nut onto the Clamp body at the glass end of the Brace until the Clamp body is fixed to the glass (b). **Do not over tighten the Clamp over the glass.** Slide the Wall plate cover over the Wall plate assembly (d).

STAGE 5**AWC PANEL ONLY**

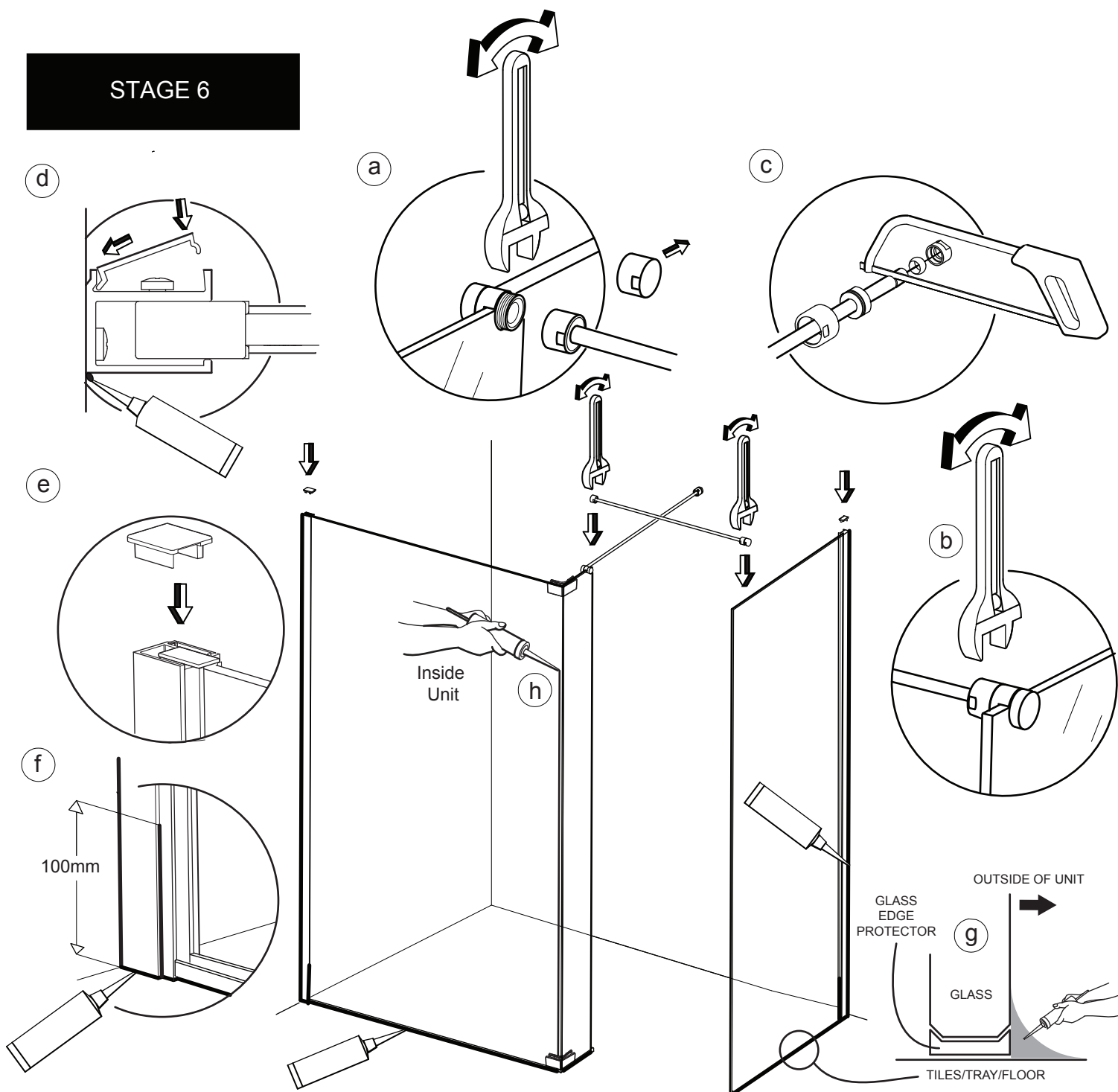
This stage is describing the Wall mount and Panel installation for model AWC only.

Position the Wall mount on to the wall in the desired position. Please see dimension on **Important page** for Max and Min model sizes. Dimension 1900 -2100mm, 1600-1800mm or 1300-1500mm is measured from the Finished wall surface in the corner of the enclosure to the outside face of the AWL panel Wall mount. Position the Wall mount so that the adjustment slots on the side of the wall mount are facing inside the product.

Plumb the Wall mount for upright and mark the fixing holes on the wall in the centre of the slots in the back face of the Wall mount. Drill the fixing holes in the wall and insert the wall plugs. Clean the area. Apply silicon sealant to the area behind the Wall mount between the floor or tray if fitted and the tiles and 100mm up the wall, central to the width of the Wall mount (a). Fit the Wall mount with the 5 No. 8 x 32mm Pan head screws (a) (Kit of Parts).

We recommend two people are available for this stage. Carefully lower the glass panel down into the Wall mount and onto the floor (b). Secure the glass panel to the Wall mount using the 5 No.8 x 9.5mm Pan head screws (b).

STAGE 6



This stage is describing the fitting of the AWC brace and the fitting of the Caps, Covers and Silicon sealant on both AWL and AWC panels.

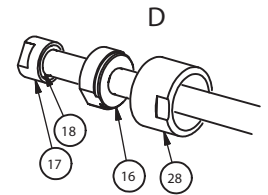
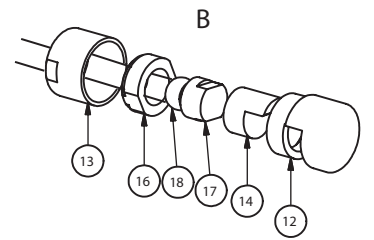
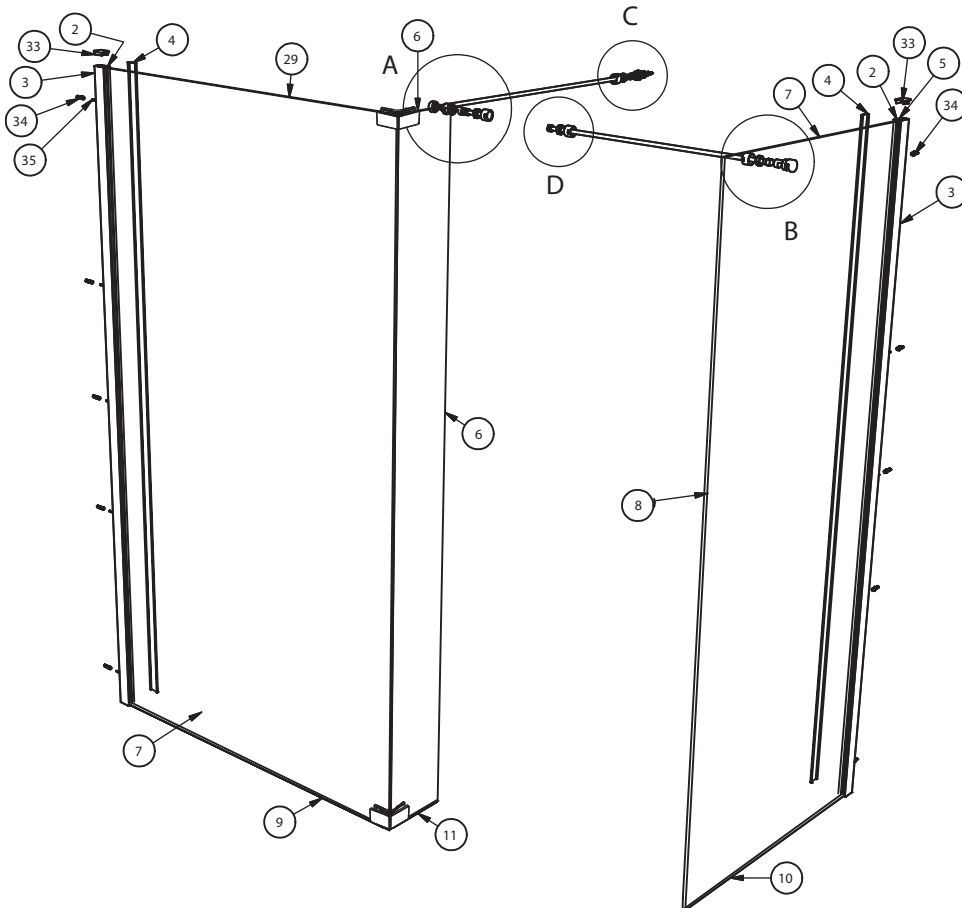
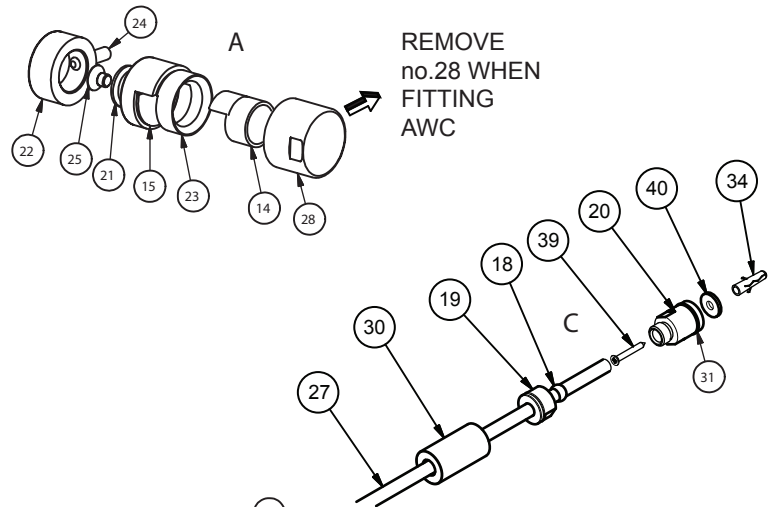
AWC model only: To fit the AWC Brace unscrew and remove the Brace nut end cap (a). Unscrew the Clamp body until the Glass clamp easily fits over the glass (b). Place the Brace carefully on to the top of the AWC glass panel and screw the Brace nut at the L-Shaped panel end onto the Glass clamp assembly (a). If the Brace is too long, accurately measure and mark the length to be removed, slide the Brace Nut away at the L-Shaped panel end and unscrew the Compression fitting (c). Cut the Brace Bar to the desired length (c). Reassemble the Compression fitting, and screw the Brace nut onto the Glass clamp assembly. Tighten both the Brace nuts at either end of the AWC Brace, **Do not over tighten.**

All models: Fit the Wall mount cover/s (d). Fit the Wall mount top cap/s (e) (Kit of Parts)

Apply a thin bead of silicon along all outside joints. Seal the joint on the outside between the Wall mount/s and the Vertical frame and 100mm up (f) continue the silicon along the bottom edge of the Wall mount/s and all the way up the outside of the extrusion between the Wall mount/s and the tiles (f). It is important to create a water-tight seal between the Panel Glass, Glass Edge Protector (on the bottom edge of each Panel) and the Tiles/Tray/Flooring. Apply a fillet of Silicone that covers these parts along each Glass Panel (g). Masking tape can be used to achieve a tidy edge to the sealant (remove the masking tape immediately after applying). Finally apply Silicone Sealant all the way up the internal joint between front and side panels - this must be inside the unit (h). Allow the silicon to cure for 24 hours before using the shower.

PARTS LIST

PARTS LIST					PARTS LIST				
ITEM	DESCRIPTION	PART No.	QTY	LENGTH	ITEM	DESCRIPTION	PART No.	QTY	LENGTH
1	PAN HEAD SELF TAP SCREW	1420 A SILVER	10	ST4.2 x 9.5 - C - Z	29	WALL COMPRESSION SLEEVE	6235 A SILVER	1	
2	450 H SECTION 8mm	5411 A SILVER	2	2025.5mm	30	O-RING 0220-15	1527 AF	1	
3	450 EXT WALL MOUNT	5406 A SILVER	2	2025.5mm	31	AWL KIT OF PARTS			
4	EXT COVER	5418 A SILVER	2	2025.5mm	32	EXT W.MOUNT CAP	6216 A SILVER	2	
5	H. SECTION END CAP	6215 A SILVER	2		33	WALL PLUG	1818 AF	11	
6	ENTRANCE GLASS PANEL	4009 M CLEAR/PLAIN	1		34	PAN HEAD SELF TAP SCREW	1471 A SILVER	10	ST4.2 x 32 - C - Z
7	FRONT PANEL GLASS (AWL 1500)	9037 M CLEAR/PLAIN	1	1437mm	35	CSK SELF TAP SCREW	1454 A SILVER	1	ST4.2 x 2 - C - Z
	FRONT PANEL GLASS (AWL 1200)	9036 M CLEAR/PLAIN	1	1137mm	36	CLEAR SILICON SEALANT	1967 AF	1	
	FRONT PANEL GLASS (AWL 900)	9035 M CLEAR/PLAIN	1	833mm	37	AWL/AWC INSTRUCTION BOOKLET	1103AF	1	
8	SIDE PANEL AWC 850	4010 M CLEAR/PLAIN	1		38	CSK SELF TAP SCREW	1478 A SILVER	1	ST4.2 x 32 - C - Z
9	8mm GLASS EDGE PROTECTOR	6087 CLEAR	1		39	NEOPRENE WASHER O.D.19.05	1540 AF	1	
10	10mm GLASS EDGE PROTECTOR	6091 CLEAR	1						
11	10mm GLASS EDGE PROTECTOR	6091 CLEAR	1	250mm					
12	CLAMP BODY	6213 AF	1						
13	BRACE NUT	6202 A SILVER	2						
14	CLAMP BODY GASKET	7509 BLACK	2						
15	CLAMP BODY WASHER 2	7510 BLACK	2						
16	WALKIN BRACE COMPRESSION A	5424 A SILVER	2						
17	WALKIN BRACE COMPRESSION B	5425 A SILVER	2						
18	COMPRESSION RING ID 10mm	5430 AF	3						
19	WALKIN BRACE COMPRESSION A	6234 A SILVER	1						
20	WALKIN BRACE COMPRESSION B	6233 A SILVER	1						
21	WALL PLATE	1458 AF	1						
22	CLAMP BODY ADAPTER FOR BRACE	5426 A SILVER	1						
23	MODIFIED CLAMP BODY	5427 A SILVER	1						
24	SKT SET SCREW	1371 A SILVER	1	M5 x 20					
25	CSK SET SCREW	1500 A SILVER	1	M5 x 6					
26	ENTRANCE BRACE BAR	5428 A SILVER	1						
27	WALL BRACE BAR	5429 A SILVER	1						
28	BRACE NUT END CAP	5438 AF	1						



We recommend that these instructions are handed to the user with a note of a date of purchase and model details.
To order replacements quote:Part Descriptions, Model, Part Number and Colour.

MAINTENANCE

Matki Glass Guard Easy Clean Surface Protection (optional) and General Cleaning Guide

Cleaning Instructions

Matki Glass Guard allows water to form minute beads which easily trickle off the surface of the glass. This makes the glass easier to clean - the glass does not need to be cleaned as frequently, but it does require occasional maintenance. As less cleaning is required the use of detergents can be minimised thus helping to protect the environment. The lifespan of the Matki Glass Guard is dependant on the frequency of use of the shower and the degree of water hardness.

The combination of alkaline materials and humidity affects glass in an extremely aggressive way. Do not use bleach, alkaline, acid-based or aggressive and abrasive glass cleaners, detergents or household cleaning products on the glass or frames.

We recommend that glass is washed down with clean water and a soft clean cloth or sponge and dried off with a microfibre cloth.

The special coating is only present on the inside of the glass.

Matki Glass Guard is guaranteed for 2 years provided that the guidelines and cleaning instructions are followed.

Aluminium and Chrome parts should be cleaned with a mild non scratch household cleaner and a soft cloth or sponge.

Do not use acidic-based descaler products or products which are unsuitable for cleaning enamelled surfaces, including abrasive cleaners or cleaners containing bleach or solvents, as the products will effect the anodised framework. Under no circumstances use cleaners with a pH level exceeding 8.

Matki does not recommend the use of 'Leave-on' shower cleaners on Matki Glass Guard Products.

Water Softeners and Glass Guard - Certain types of water softeners increase the alkalinity of the water due to a carry-over of Chloride during re-generation which can cause aggressive water spots on both untreated and Glass Guarded glass. If using a water softener we recommend a two-cylinder machine with automatic re-generation instead of a timer.

If a single-cylinder water softener with timer is already installed it is recommended that after each shower excess water is removed from the glass with a squeegee or with a micro-fibre cloth.



Wash down with clean warm water and a soft clean cloth or sponge.



Do not use bleach, alkaline or acid-based, aggressive or abrasive cleaning products.

IMPORTANT

Matki Glass Guard is guaranteed for 2 years. It is essential that the cleaning instructions are followed in order to maintain the hydrophobic properties of the glass coating. In the event of the failure to comply in any way with these instructions, any warranty or guarantee will be null and void.

MATKI PLC, CHURCHWARD ROAD, YATE, BRISTOL, BS37 5PL
TELEPHONE:01454 328816 (AFTER SALES) FAX:01454 328821 EMAIL: techsupport@matki.co.uk

