

matki

SHOWERING

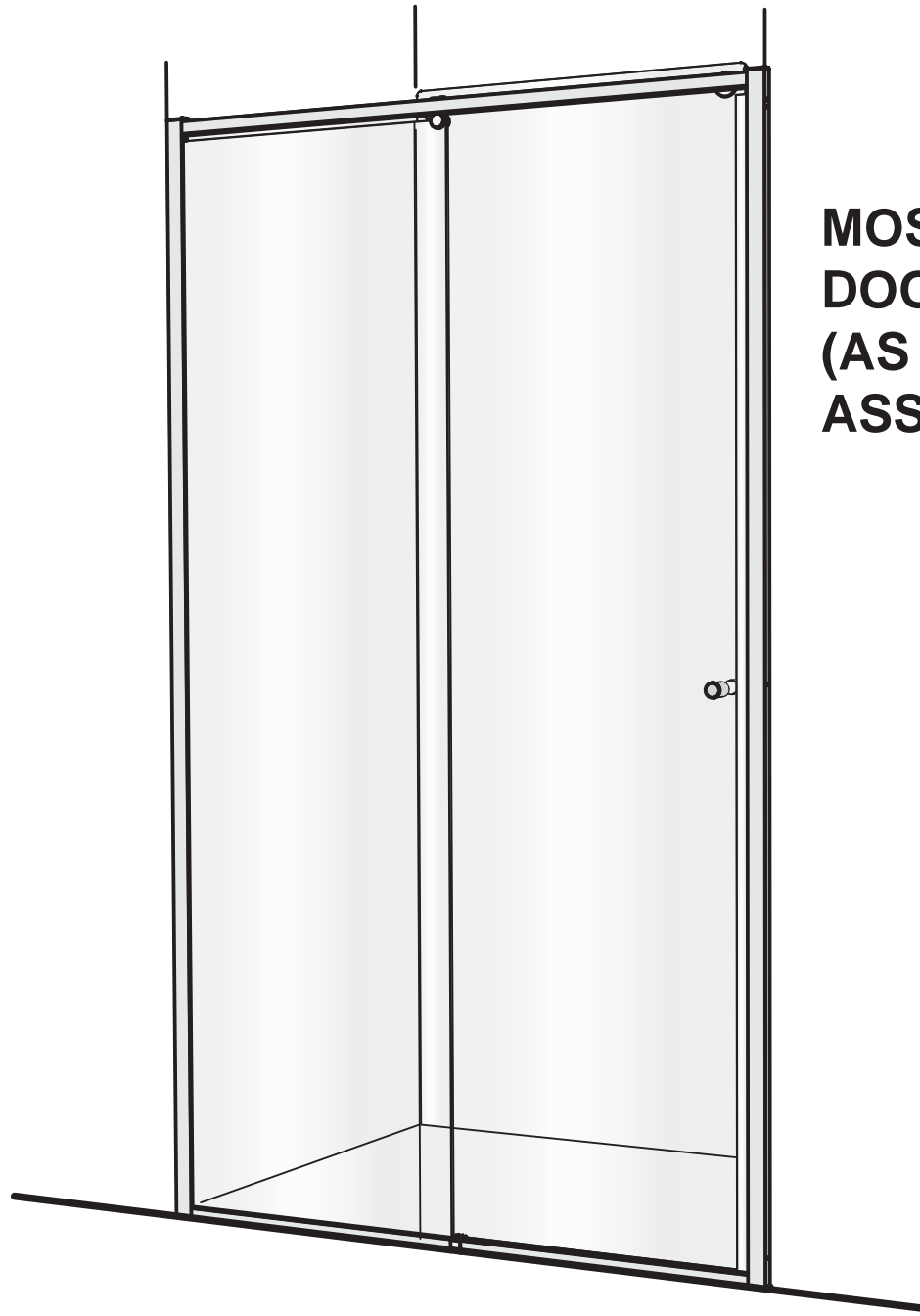
MATKI ONE[®] MOSR- RECESS SLIDER

INSTALLATION

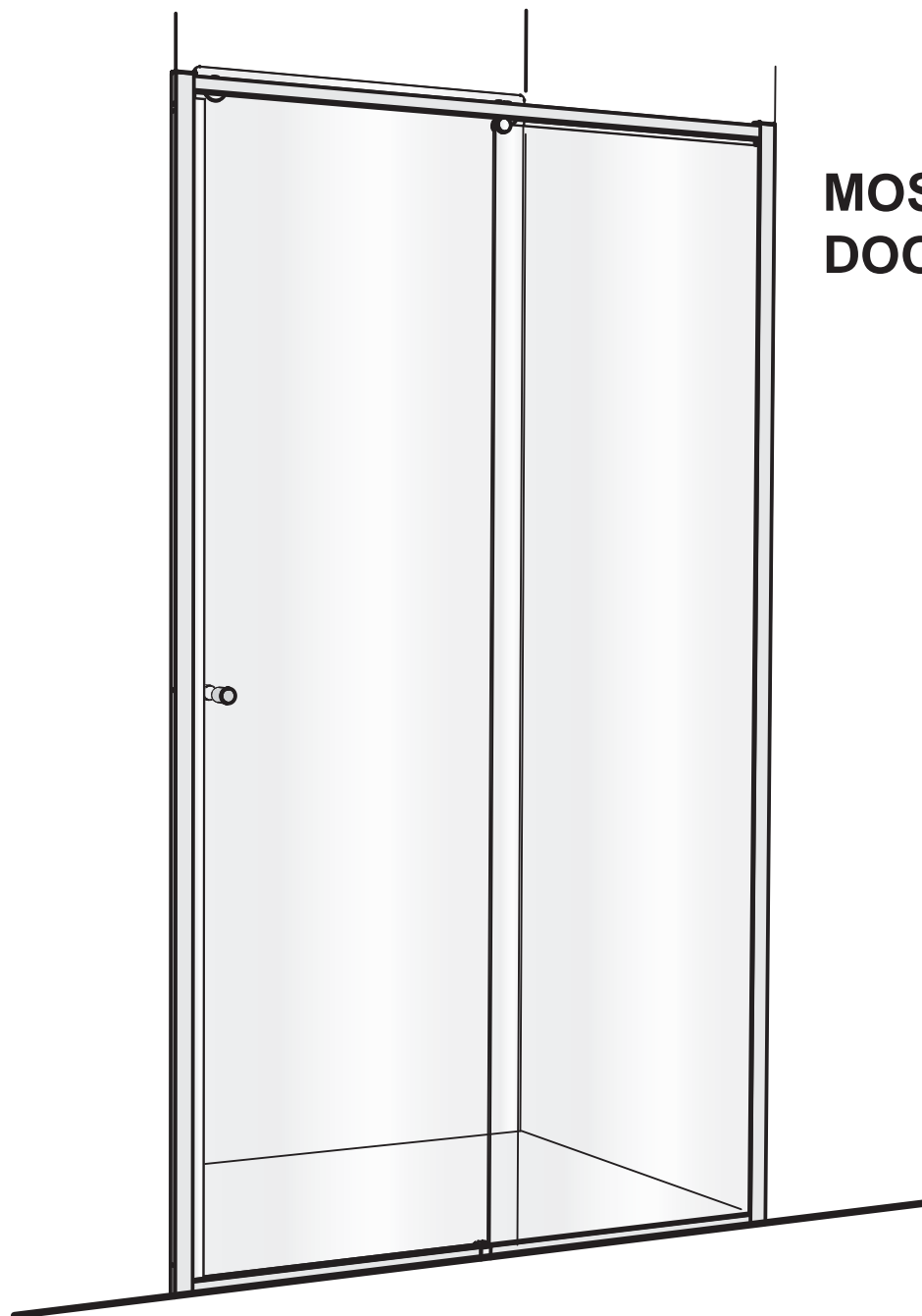
PARTS LIST



MATKI PLC, CHURCHWARD ROAD, YATE, BRISTOL, BS37 5PL
TELEPHONE:01454 328816 (AFTER SALES) FAX:01454 328821 EMAIL: techsupport@matki.co.uk



**MOSR RH
DOOR OPENING
(AS FACTORY
ASSEMBLED)**



**MOSR LH
DOOR OPENING**

THE MATKI ONE RECESS SLIDER IS FACTORY BUILT AS RH DOOR OPENING.
FOLLOW INSTRUCTIONS IN THIS BOOKLET TO REVERSE FOR LH DOOR OPENING.

IMPORTANT

TOOLS REQUIRED

Masonry Drill bit 6mm, Tape Measure, Screw Drivers, Safety Glasses, Electric Drill, Level, Pencil, Adjustable Spanners, Non Slip Gloves

Before disposing of carton and/or commencing assembly, please check all the parts to ascertain that none are missing and they are all undamaged. No claim for missing/damaged parts will be accepted once the packing carton has been disposed of and/or assembly has commenced.

In case of query contact your Stockist with details of model number and details of serial number.

PREPARATION IMPORTANT

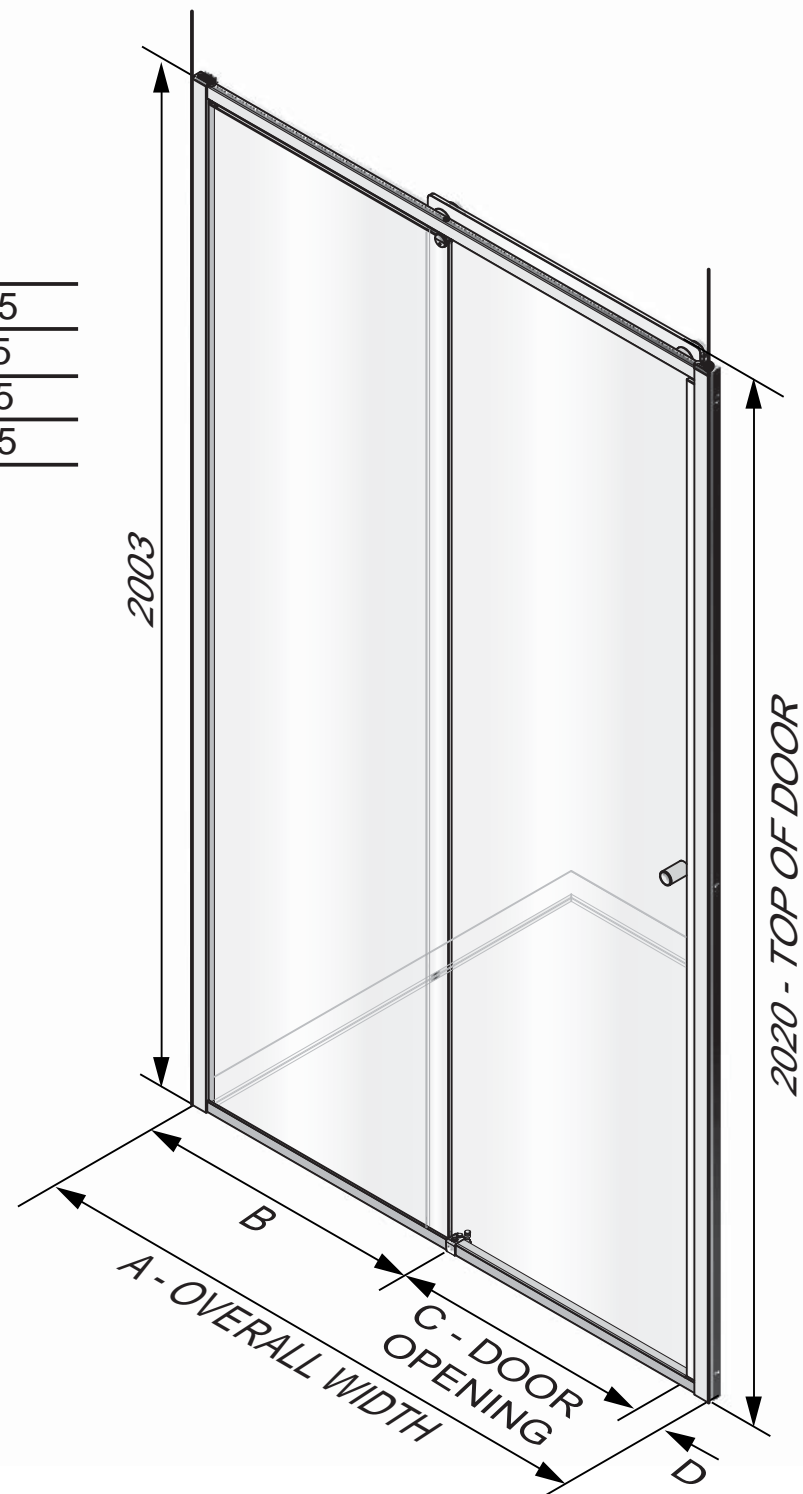
1. Please read complete installation instructions before fitting for enclosure and tray (if fitting).
2. We recommend the use of safety glasses and non slip gloves when handling the glass panels.
3. Ensure that the product can be **fixed** to a **solid masonry wall** or suitable **timber stud work grade C16/C24** in the area behind the wall frames.
4. Shower trays or tiled floors **must be absolutely level** where enclosures are fitted
5. If fitting a tray we recommend a **drainage test** is carried out before the tray is tiled in position.
6. The assembly should be installed onto a waterproof wall covering and installed after the tray and wall coverings are in place. Trays with tiling lips should be let into the wall with the tiling lip flush with the wall to allow the tiling to overlap the tiling lip.
7. Seal between tray and tiles. Remove any excess sealant from the area/joint between the tray and the tiles where the wall mount is to be fitted. This will ensure the wall mount fits correctly to the wall and tray/or tiled floor.

CAUTION: TEMPERED GLASS CANNOT BE CUT, POLISHED METAL AND CHROME CAN BE SCRATCHED. CAREFULLY REMOVE ASSEMBLY FROM CARTON, DO NOT PLACE GLASS ON HARD FLOOR OR EXPOSE EDGES TO IMPACT. DO NOT CUT TOP TRACK IN ANY CIRCUMSTANCES.

DIMENSIONS

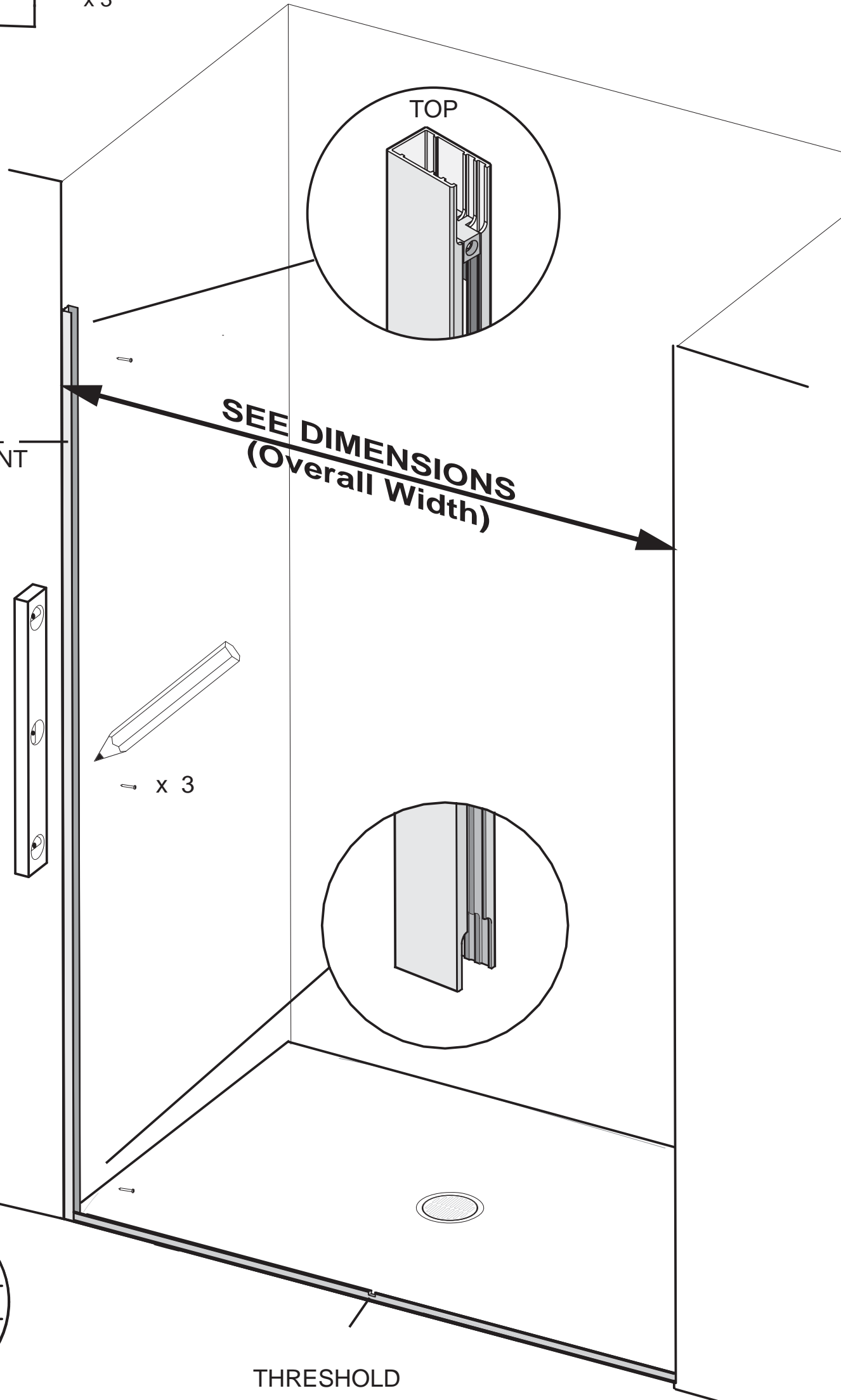
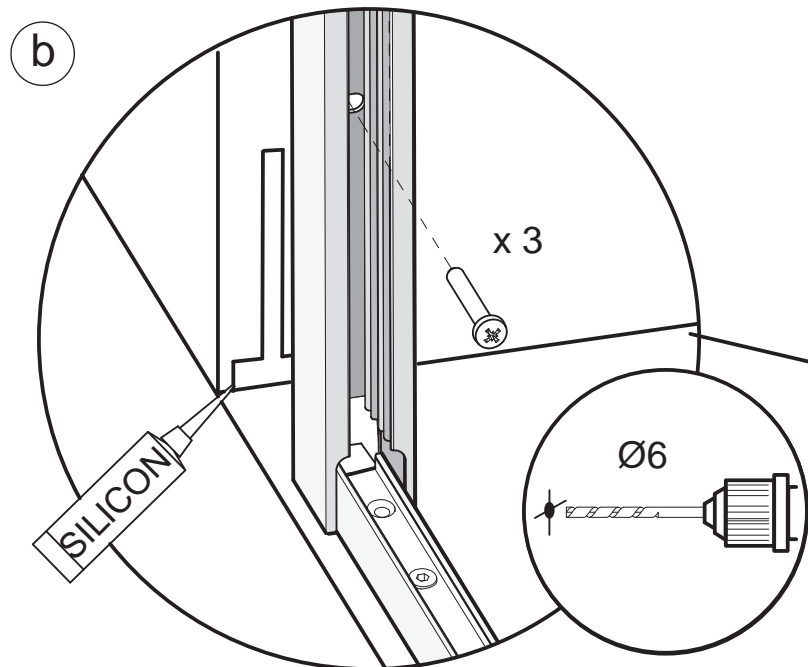
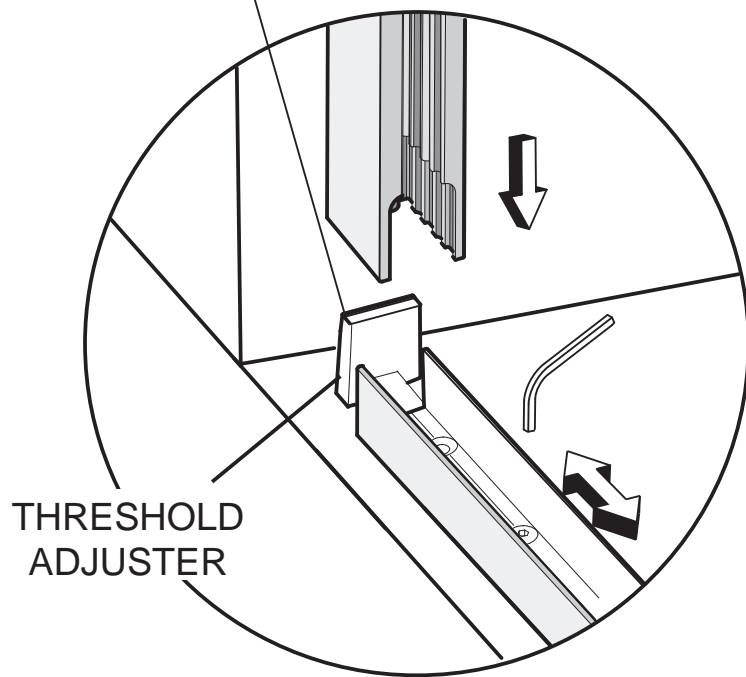
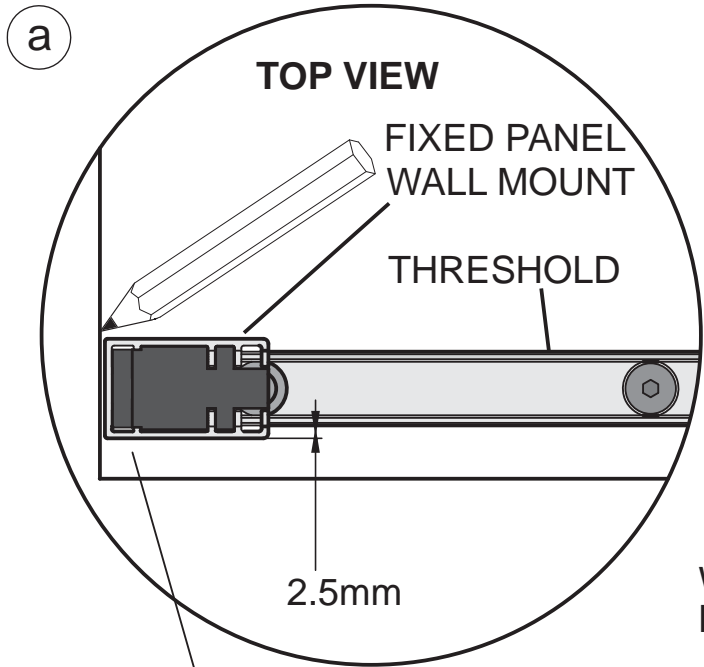
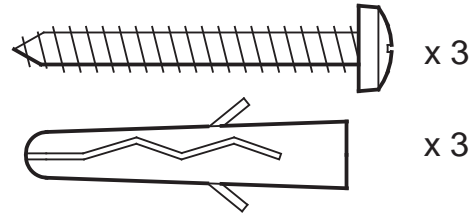
MATKI ONE RECESS SLIDER

MODEL	A	B	C	D
MORS1000	960-1000	468-488	400	55-75
MORS1100	1060-1100	489-509	442	55-75
MORS1200	1160-1200	570-590	450	55-75
MORS1500	1460-1500	779-799	551	55-75



Dimensions are approximate

STAGE 1

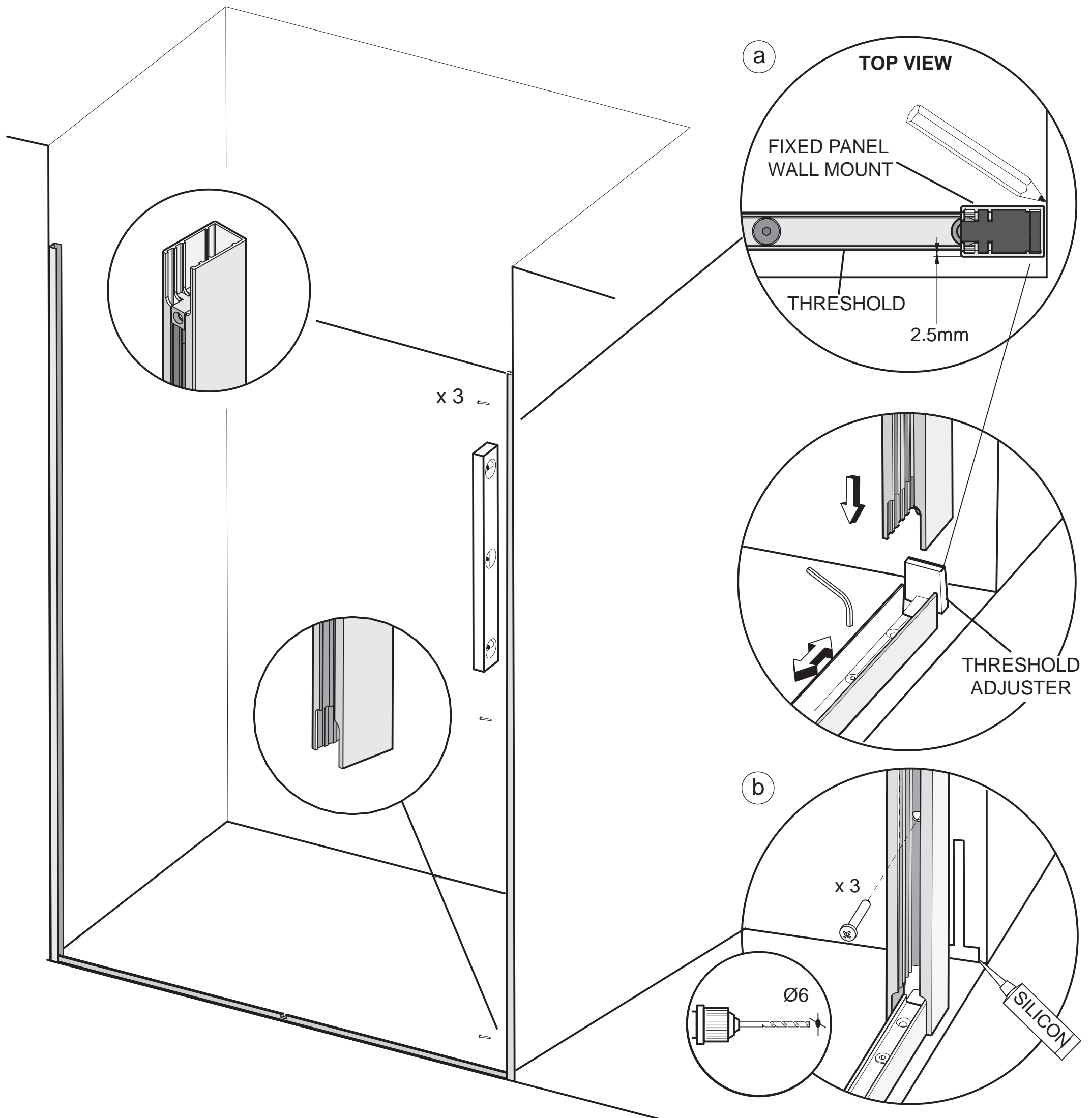
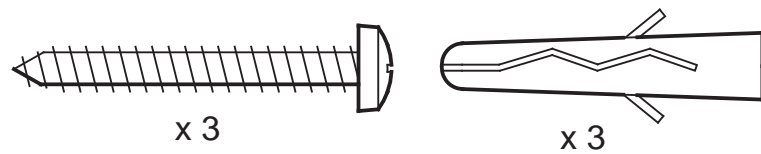


This stage is describing the fitting of the Fixed panel wall mount
Before fitting the enclosure please check that your product will fit the finished aperture size.(See dimensions)

a. Remove and set aside the threshold cover from the horizontal threshold. Place the horizontal threshold into position on tray. (If fitting close to the front edge of the tray take into account that the front face of the fixed panel wall mount sits 2.5mm in front of the threshold). Position the fixed panel wall mount on to the wall over threshold (wall mount has a top and bottom, Wall mount cut-out with socket set screw is the top of the wall mount). Ensure the threshold adjuster fits up into the back of the wall mount extrusion in the recess as shown. Adjust position of threshold adjuster as required, to adjust loosen screw 1 full turn, re-tighten after adjustment, do not over tighten. Plumb the wall mount for upright and mark the fixing holes in the centre of the slots.

b. Drill 3 x fixing holes in the wall and insert wall plugs. Clean area and apply silicon sealant to the area behind the wall mount between the tray and tiles and 100mm up the wall, central to the width of the wall mount. Fit the wall mount using the No.8 x 32mm Pan Head Screws

STAGE 2



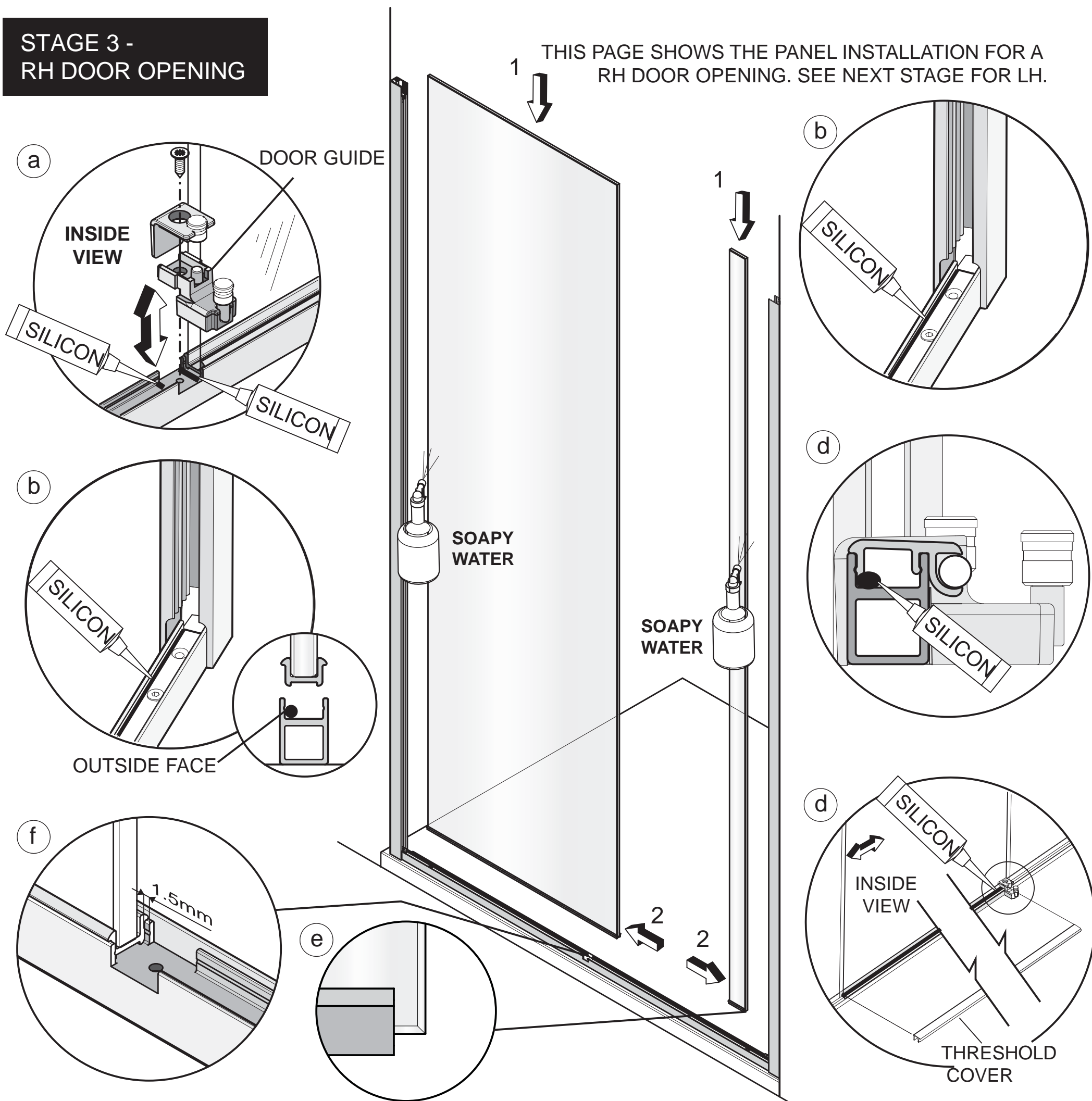
This stage is describing the fitting of the Closure panel wall mount.

a. Position the closure panel wall mount over the threshold and ensure the threshold adjuster fits up into the back of the wall mount extrusion in the recess as shown. Adjust position of threshold adjuster as required to ensure the threshold extends under the wall mount. To adjust loosen screw 1 full turn, re-tighten after adjustment, do not over tighten. Plumb the wall mount for upright and mark the fixing holes in the centre of the slots.

b. Drill 3 x fixing holes in the wall and insert wall plugs. Clean the area and apply silicon sealant to the area behind the wall mount between the tray and tiles and 100mm up the wall, central to the width of the wall mount. Fit the wall mount using the No.8 x 32mm Pan Head Screw.

STAGE 3 - RH DOOR OPENING

THIS PAGE SHOWS THE PANEL INSTALLATION FOR A
RH DOOR OPENING. SEE NEXT STAGE FOR LH.



This stage is describing the fitting of the Fixed panel and Closure panel, for a RH Door opening, see next page for LH Door opening. Before fitting the fixed glass panel adjust the threshold extrusion so that it is equally positioned between the two wall mounts. Loosen the threshold adjusters at each end and lightly tighten in position as required.

a. Remove and set aside the door guide from the threshold extrusion before fitting the fixed glass panel.

b. Apply a bead of silicon along the outer inside edge of the threshold adjuster in the recess provided (b) in the threshold extrusion and around either side of the recess where the door guide fits into the threshold extrusion (a).

c. Lightly wet the edge of the fixed panel with soapy water and gently lower the panel down into the threshold extrusion first then along into the wall mount.

d. As a guide the end of the fixed panel should be positioned 1.5mm away from the cut out in the threshold track (d) further slight adjustments may be required during the fitting of the closure panel.

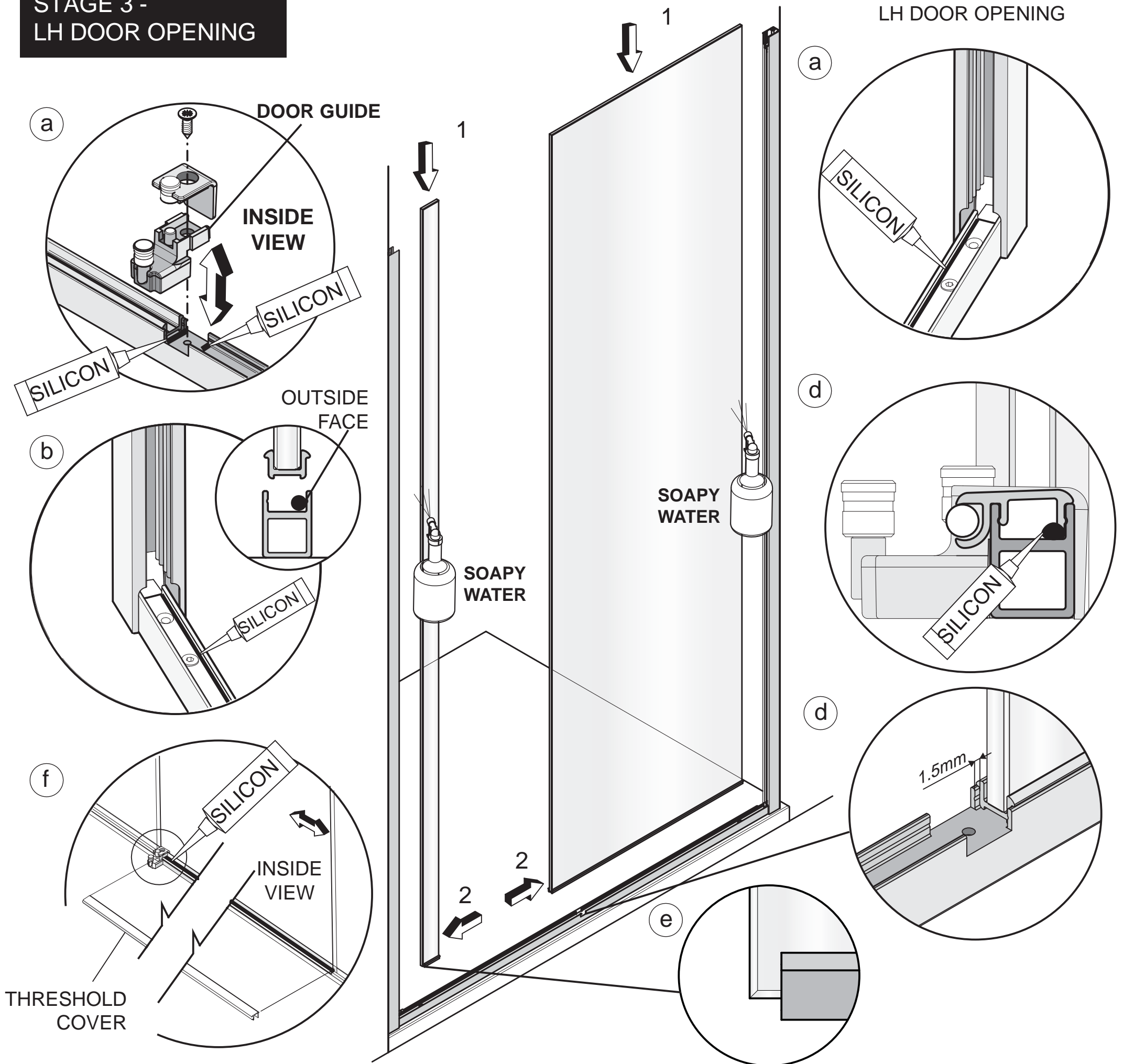
e. Repeat as above (b-c) for the closure panel. Note, the extrusion glued to the bottom of the closure panel is offset. The exposed glass edge fits into the wall mount.

f. Re-fit the door guide (a). Set the distance between the fixed glass panel and closure glass panel using the threshold cover. The threshold cover should fit tightly between the closure panel glass and the door guide (f).

g. Apply a bead of silicon along the inside length of the threshold in the recess at the front of the track where the threshold cover will fit (f). Clip the threshold cover into the threshold extrusion.

**STAGE 3 -
LH DOOR OPENING**

THIS PAGE SHOWS THE PANEL INSTALLATION FOR A
LH DOOR OPENING



This stage is describing the fitting of the Fixed panel and Closure panel, for a LH Door opening, see previous page for RH Door opening. Before fitting the fixed glass panel adjust the threshold extrusion so that it is equally positioned between the two wall mounts. Loosen the threshold adjusters at each end and lightly tighten in position as required.

a. Remove and set aside the door guide from the threshold extrusion before fitting the fixed glass panel.

b. Apply a bead of silicon along the outer inside edge of the threshold adjuster in the recess provided (b) in the threshold extrusion and around either side of the recess where the door guide fits into the threshold extrusion (a).

c. Lightly wet the edge of the fixed panel with soapy water and gently lower the panel down into the threshold extrusion first then along into the wall mount.

d. As a guide the end of the fixed panel should be positioned 1.5mm away from the cut out in the threshold track, further slight adjustments may be required during the fitting of the closure panel.

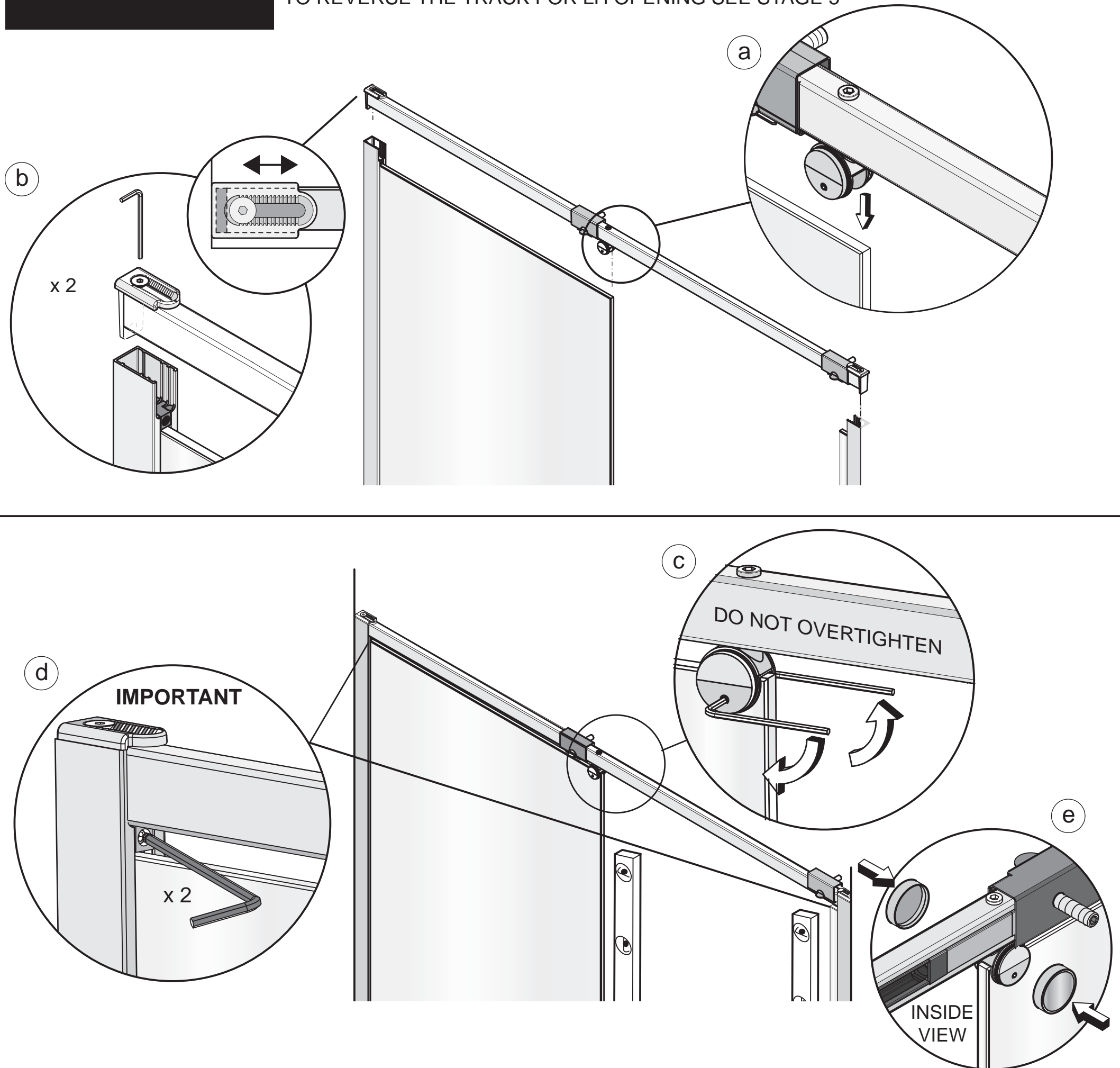
e. Repeat as above (b-c) for the closure panel. Note, the extrusion glued to the bottom of the closure panel is offset. The exposed glass edge fits into the wall mount.

f. Re-fit the door guide (a). Set the distance between the fixed glass panel and closure glass panel using the threshold cover. The threshold cover should fit tightly between the closure panel glass and the door guide.

g. Apply a bead of silicon along the inside length of the threshold in the recess at the front of the track where the threshold cover will fit (f). Clip the threshold cover into the threshold extrusion.

STAGE 4

THE TOP TRACK IS FACTORY ASSEMBLED FOR A RH DOOR OPENING TO REVERSE THE TRACK FOR LH OPENING SEE STAGE 5



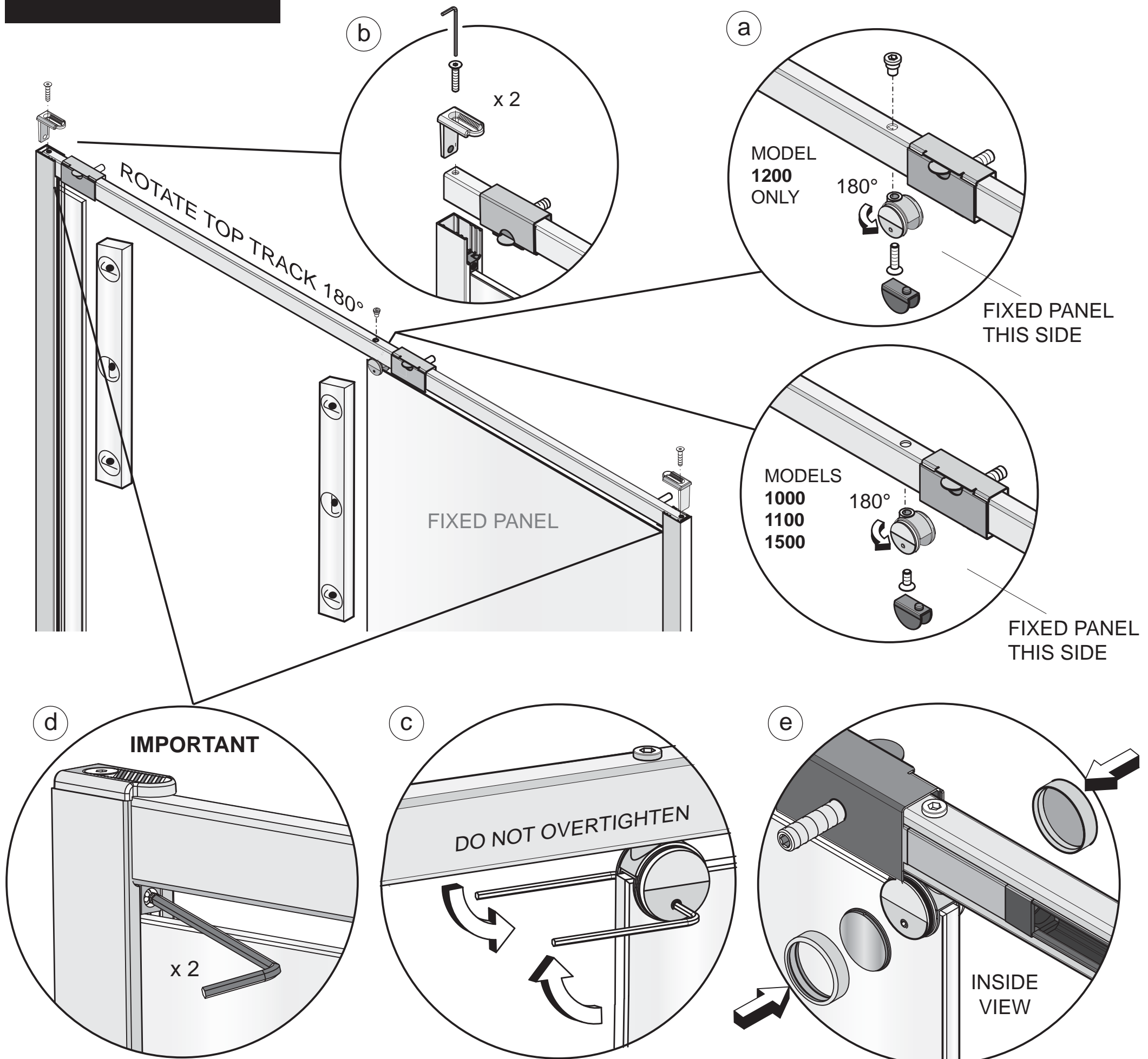
This stage is describing the fitting of the Top Track. To reverse the Top Track for a LH Door opening see Stage 5.

Before fitting the top track plumb the glass panels for vertical and ensure the entrance dimension is correct.

- Lower the top track into position, ensuring the top track glass clamp, clamps around the top face of the fixed glass panel (a).
- Fit both the wall mount top caps into the back of the wall mount. Adjust as required.
- The top track can be adjusted left or right to centralise between the Wall mounts. Tighten the top track glass clamp by tightening the socket set screws on both sides (c).
- Important** - tighten the top track locking screws underneath the top track on both wall mounts to fix the top track into position.
- Fit the glass clamp covers (supplied in the kit of parts) over both sides of the top track glass clamps.

STAGE 5

READ ONLY IF CHANGING THE DOOR OPENING TO LH



This stage is describing how to reverse the top track to a LH door opening and the fitting of the Top Track.

Before fitting the top track plumb the glass panels for vertical and ensure the entrance dimension is correct.

a. Rotate the track by 180° so that the roller block threads are still facing towards the inside of the unit. Remove the wall mount top caps swap to the opposite sides (b) Remove and re-fit the top track glass clamp by swapping to the other side of the track, so it is facing downwards (a).

c. Lower the top track into position, ensuring the top track glass clamp, clamps around the top face of the fixed glass panel (c).

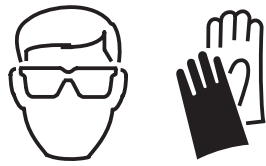
b. Fit both the wall mount top caps through the top of the track and into the wall mount (b).

c. The top track can be adjusted left or right to centralise between the Wall mounts. Tighten the top track glass clamp by tightening the socket set screws on both sides (c).

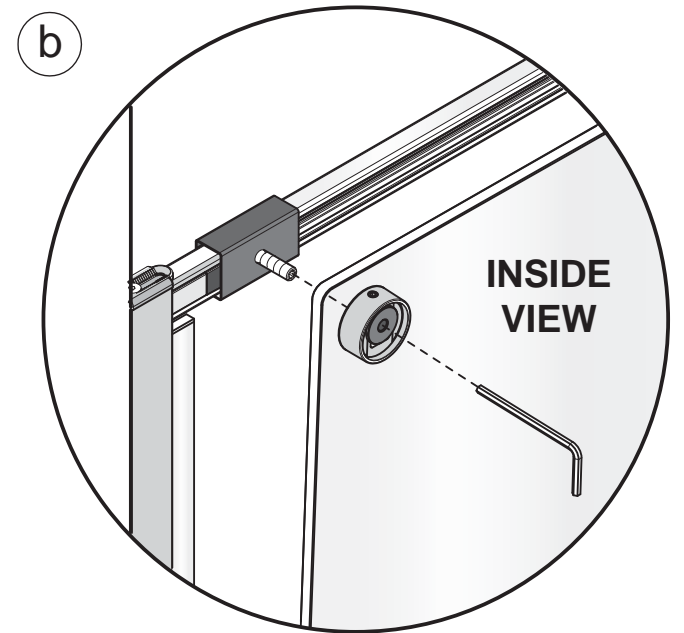
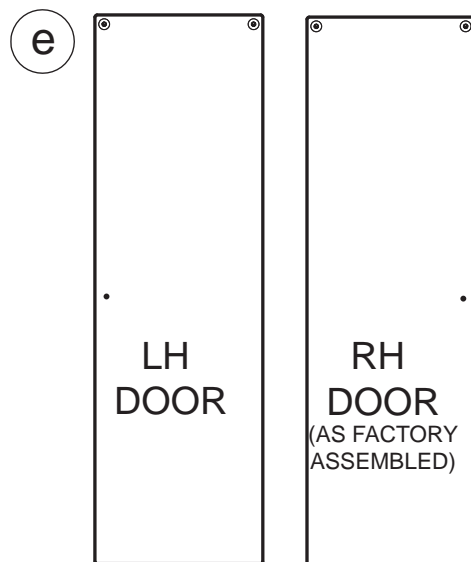
d. Important - tighten the top track locking screws underneath the top track on both wall mounts to fix the top track into position.

e. Fit the glass clamp covers (supplied in the kit of parts) over both sides of the top track glass clamps.

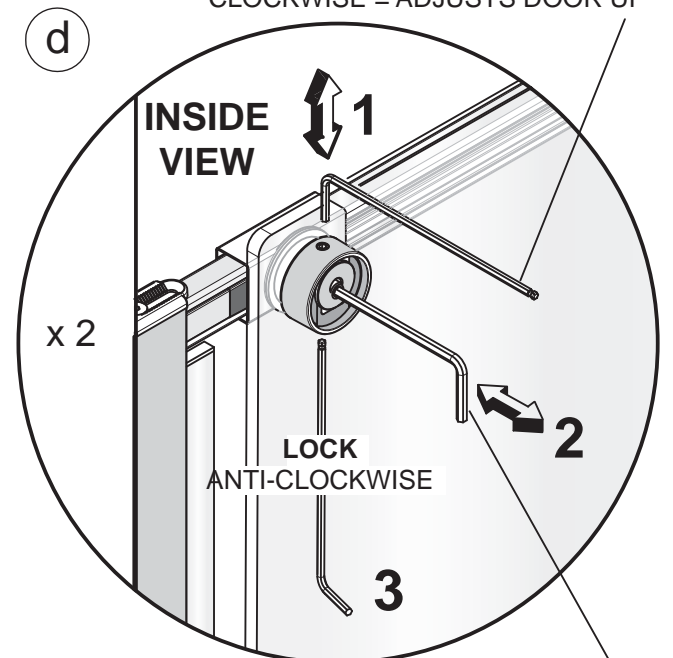
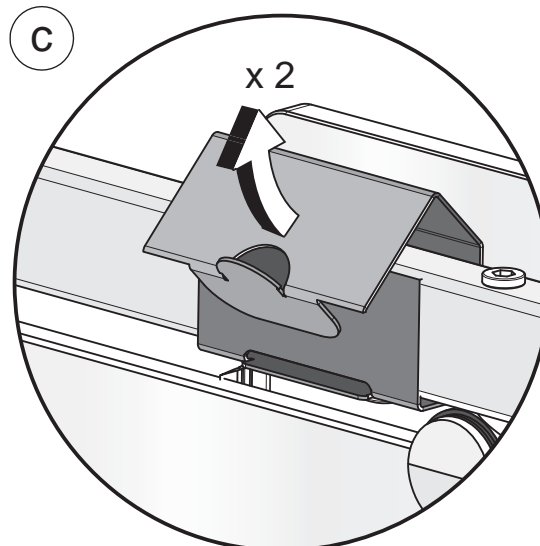
STAGE 6



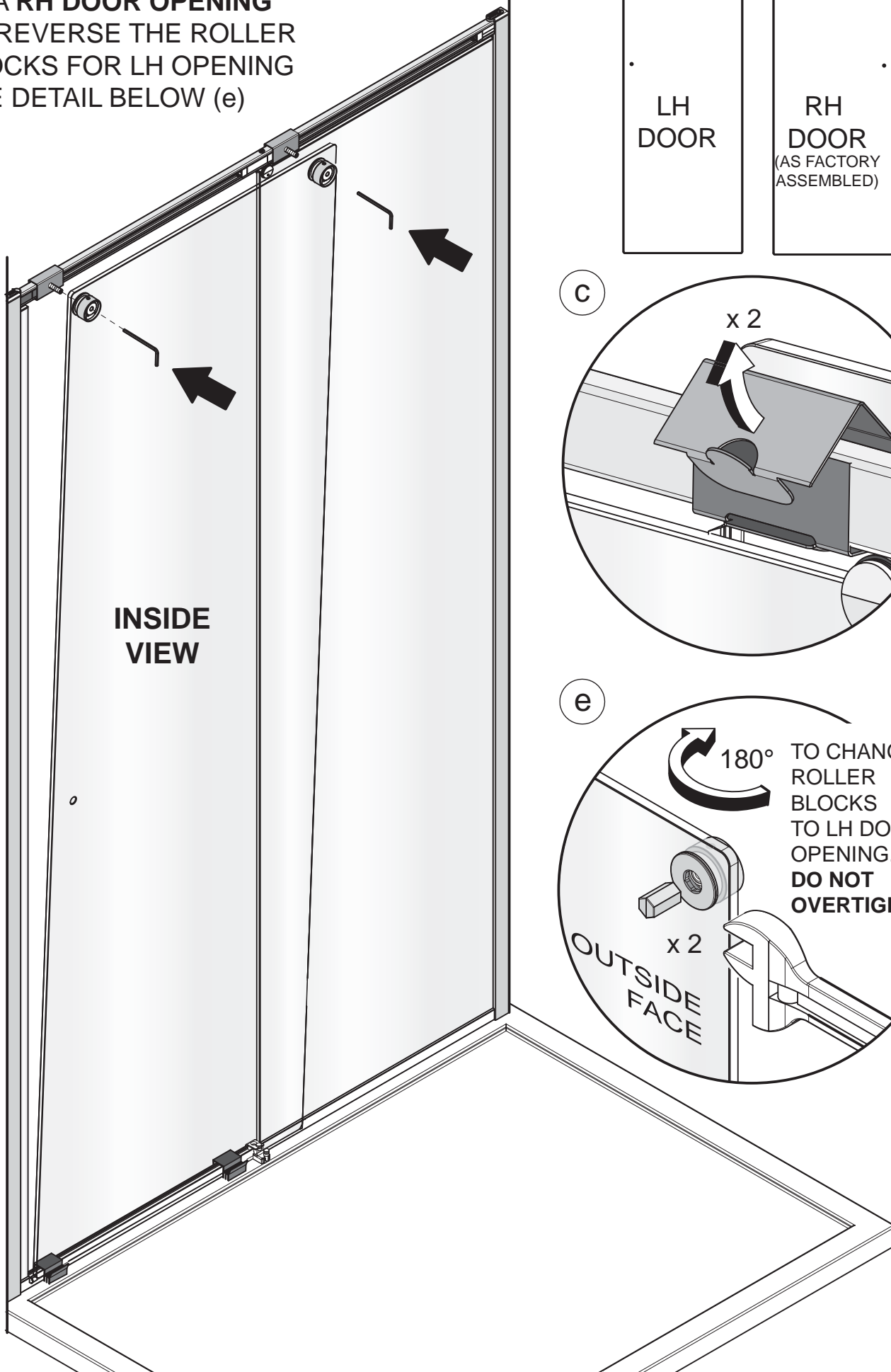
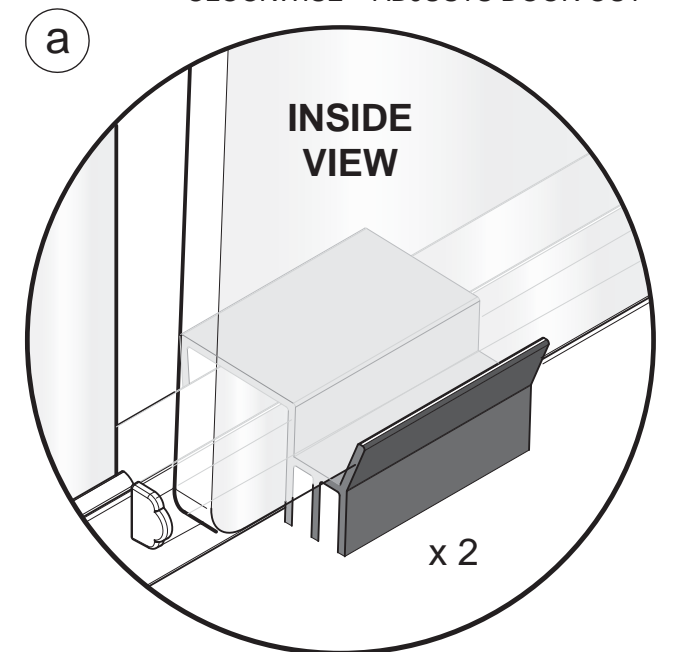
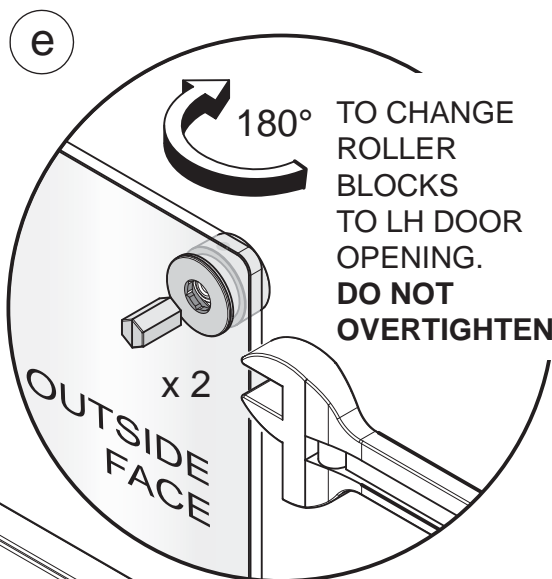
THE DOOR IS FACTORY ASSEMBLED AS A RH DOOR OPENING TO REVERSE THE ROLLER BLOCKS FOR LH OPENING SEE DETAIL BELOW (e)



ANTI-CLOCKWISE = ADJUSTS DOOR DOWN
CLOCKWISE = ADJUSTS DOOR UP



ANTI-CLOCKWISE = ADJUSTS DOOR IN
CLOCKWISE = ADJUSTS DOOR OUT



This stage is describing fitting of the Door Panel.

To reverse the Door to a LH Door opening (e) remove the Roller block assembled to the door glass using the roller block key provided in the kit of parts and an adjustable spanner. Rotate the block to the opposite side of the door glass and re-fit. Do not overtighten.

a. Important - Fit the plastic threshold protectors to the Threshold track at either side of the Door opening.

b. Load the door glass firstly onto the threshold protectors and door guide and then carefully guide the door up to the door roller threads and wind them through the door roller blocks fixed to the glass.

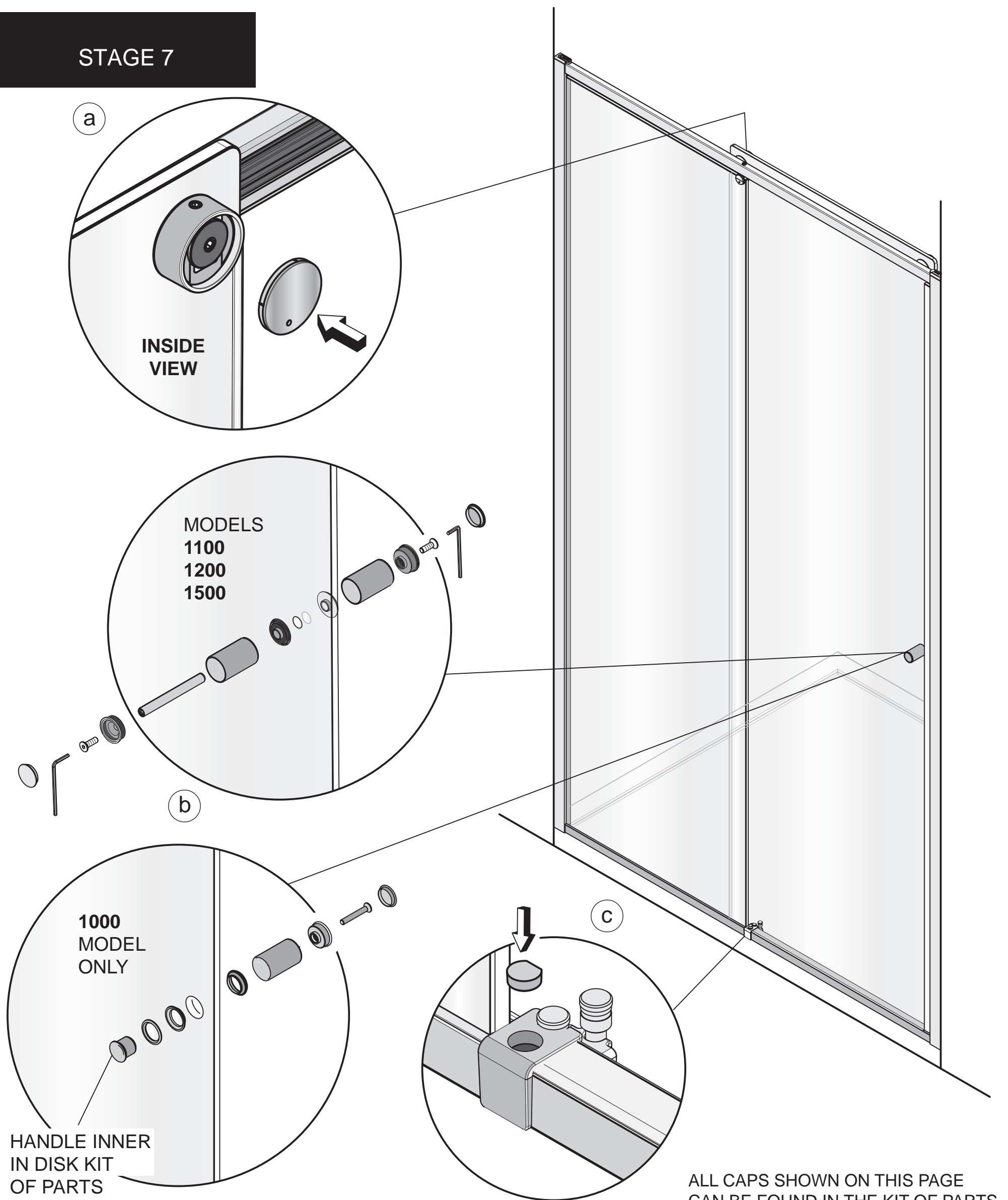
c. Remove both the cardboard top track door roller guides by pulling the tabs and unfolding them away from the top track.

d. Adjust the door panel if required so that it runs parallel to the door opening by adjusting the Roller blocks on the inside of the door. To adjust the door away from the top track rotate the central set screw clockwise using the 4mm allen Key. To adjust the door to the top track, rotate the central set screw anti-clockwise.

The door glass can also be raised or lowered by the adjustment screw in the top of the roller block using the 3mm allen key supplied. Rotate clockwise to raise the door, rotate anti-clockwise to lower the door.

Lock the adjustment by rotating the set screw anti-clockwise in the bottom of the roller block using the 3mm allen key supplied.

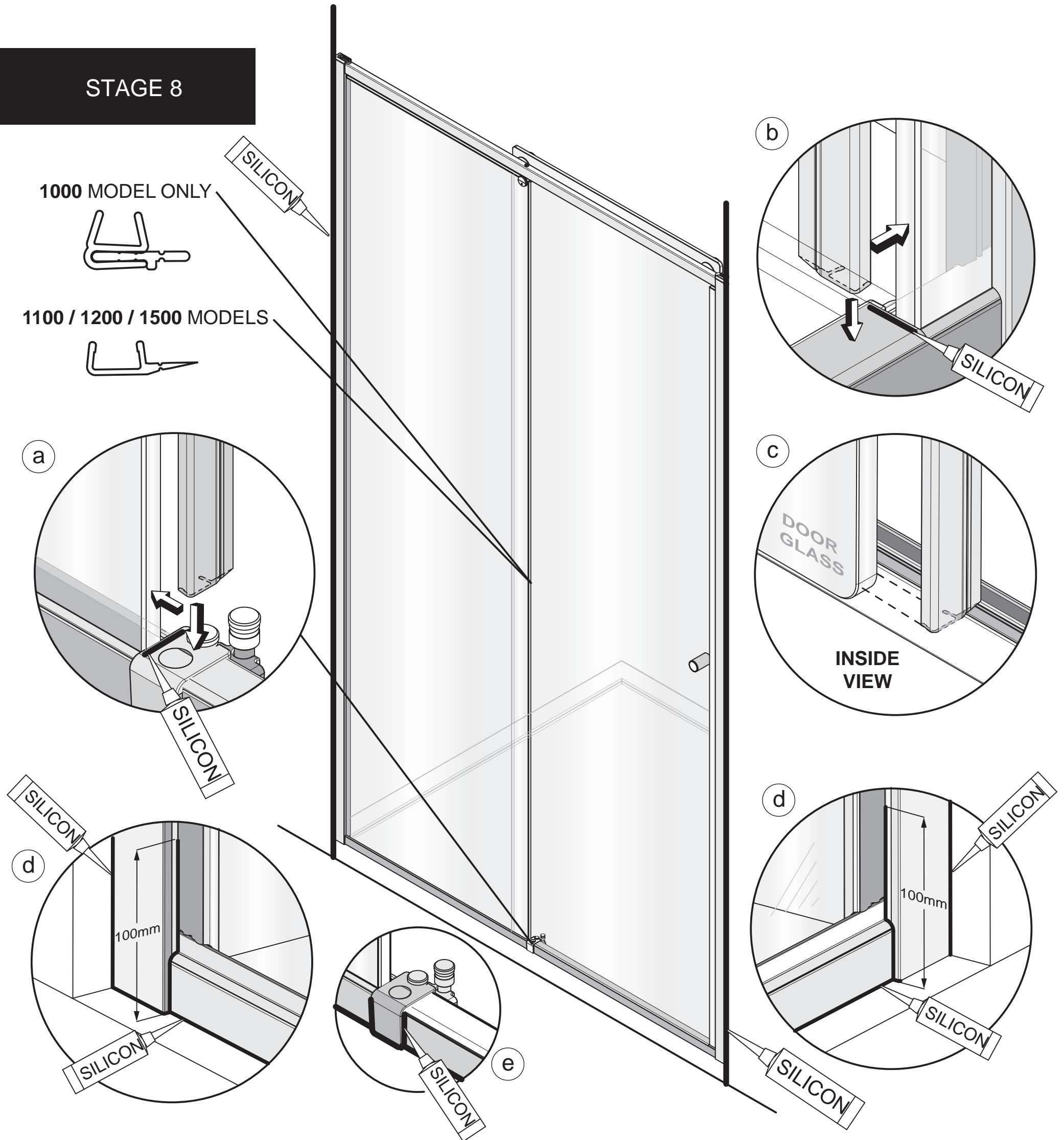
STAGE 7



This stage is describing the fitting of the Door Handle and cover caps

- a.** Fit the 2 x door roller block covers (supplied in the kit of parts) to the back of the door roller blocks.
- b.** Disassemble the handle by unscrewing the 2 x M5 x 16 Csk socket screws. Place the glass washers either side of the 2 holes in the door glass. Re-assemble the handle to the glass and tighten into position. Fit the Cover caps (supplied in the kit of parts) to either side of the handle. For the 1000 model, assemble the handle with the M5 x 35 CSK screw. The Handle Inner is in the detail pack. The handle is flush fitting on the outside of the door.
- c.** Fit the door guide screw cover (supplied in the kit of parts) to the door guide.

STAGE 8

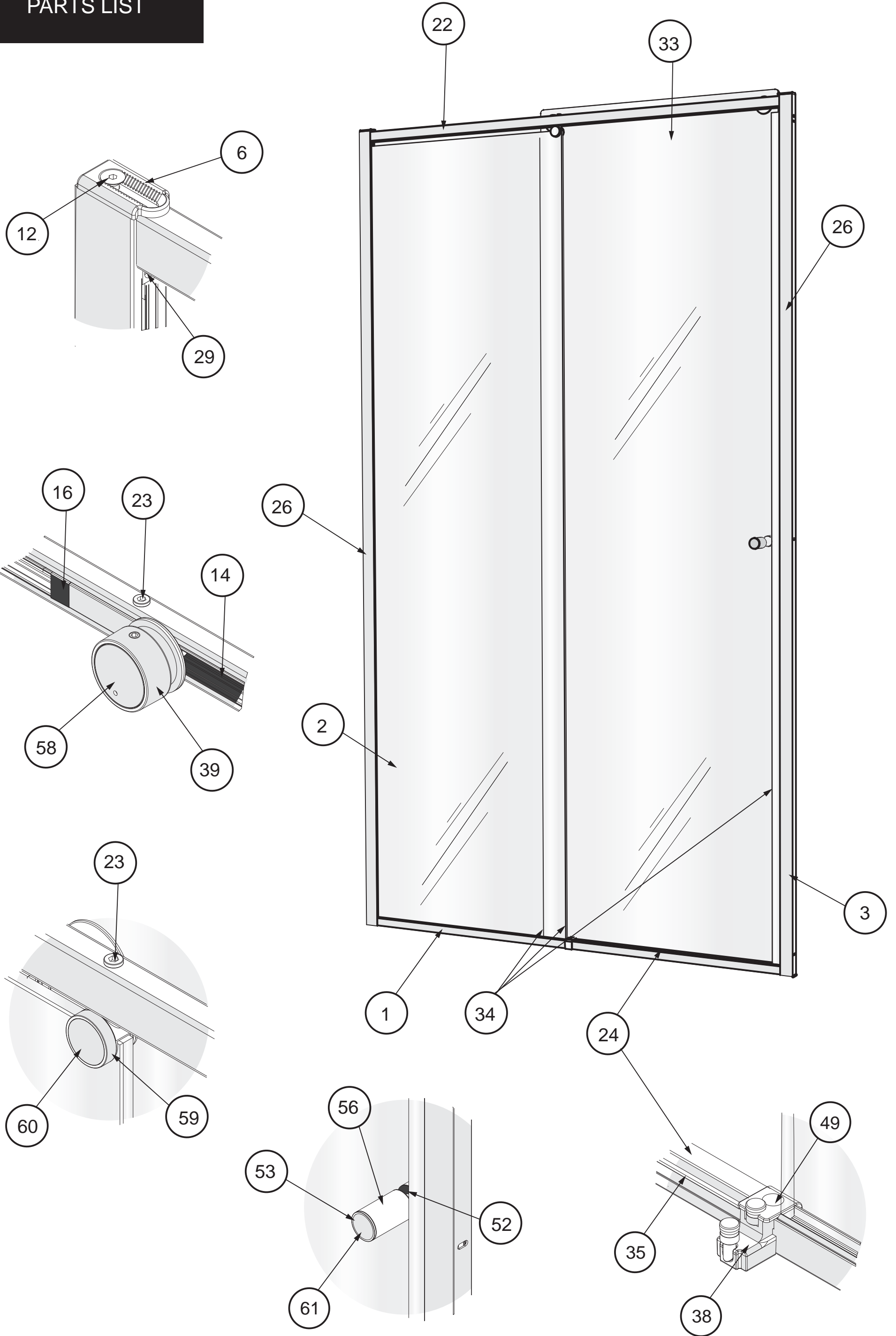


This stage is describing fitting of the Seals and Silicon

- a.** Apply a bead of silicon along the top of the door guide. Fit the fixed panel vertical seal (shorter of the 3 seals) to the edge of the fixed panel, ensuring it is pressed firmly against the face of the door guide. For 1000 Model use the 2 part seal.
- b.** Apply a bead of silicon along the top of the threshold cover where it meets the closure panel. Fit the closure panel vertical seal to the edge of the closure panel, ensuring the seal sits firmly down onto the face of the threshold cover .
- c.** Fit the Door vertical seal to the back edge of the door glass, the bottom of the seal should be lined up with the top of the radius at the corner of the glass.
- d.** Apply a thin bead of silicon along the bottom edge of both the wall mounts and all the way up the outside of both the wall mount extrusions between the wall mounts and the tiles. Apply a thin bead all the way along the threshold between the extrusion and the finished floor surface/tray. Continue around the joint where the threshold joins the wall mounts and also 100mm up on the outside where the wall mount and glass meet. Apply a bead of silicon on the outside around the joints between the door guide and threshold extrusion (e).
- Masking tape can be used to achieve a tidy edge to the sealant. Remove the masking tape immediately and allow the silicon to cure for 24 hours before using the shower.

NOTES

PARTS LIST



PARTS LIST

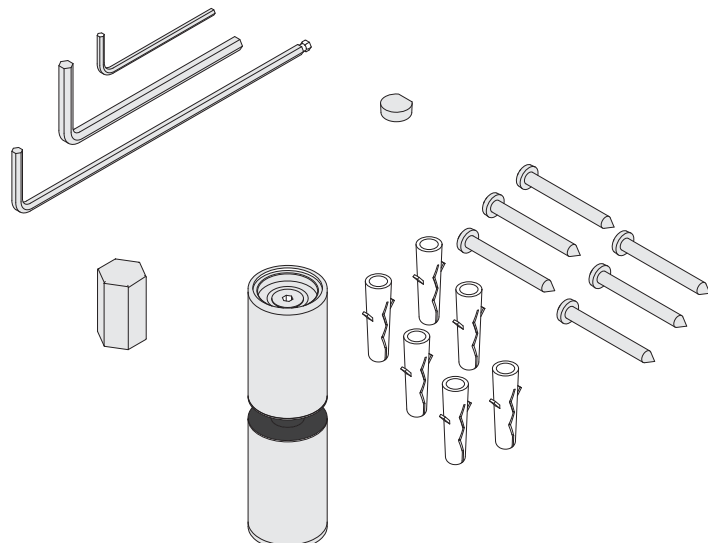
* COLOUR VARIANT ON PARTS

MAIN SLIDER PACK

ITEM	DESCRIPTION	PART No	QTY
1	SLIDER FLOOR RAIL	8898 A SILVER (1000) / 8811 A SILVER (1100) / 7604 A SILVER (1200) / 8897 A SILVER (1500)	1
2	SLIDER FIXED PANEL GLASS	7710 M CLEAR/PLAIN (1000) / 7706 M CLEAR/PLAIN (1100) / 7651 M CLEAR/PLAIN (1200) / 7712 M CLEAR/PLAIN (1500)	1
3	SLIDER CLOSURE PANEL	7650 M CLEAR/PLAIN	1
4	SLIDER FIXED PANEL FLOOR RAIL	8895 A SILVER (1000) / 8814 A SILVER (1100) / 7602 A SILVER (1200) / 8896 A SILVER (1500)	1
5	THRESHOLD END CAP	8409 WHITE	2
6	SLIDER WALL MOUNT TOP CAP	8407 AF	2
8	PIVOT CLAMP BODY	8436 A SILVER	1
9	SLIDER PIVOT CLAMP GUARD	8432 GREY	1
12	M5 x 20 CSK SKT	1503 A SILVER	3
13	DIN O-Ring 0190-20	8579 AF	2
14	RECESS-ROLL TRACK PROF 471mm	8870 BLACK (1000) / 8802 BLACK (1100) / 2392 BLACK (1200) / 8865 BLACK & 8868 BLACK (1500)	2
15	SMALL WHITE DAMPER	1339 AF	2
16	SLIDER WHEEL STOP	8416 BLACK	4
17	SLIDER TOP TRACK END	8429 A SILVER	2
18	SLIDER MIDDLE TOP TRACK BRACKET	8428 A SILVER	1
21	M.Y.MOD SOCK SET +ST.ST BEARING(MIS3432)	8581 AF	2
22	RECESS SLIDER TOP TRACK	8882 A SILVER (1000) / 8808 A SILVER (1100) / 7609 A SILVER (1200) / 8883 A SILVER (1500)	1
23	PIVOT BLOCK ADJUSTER SCREW	8262 AF	1
24	SLIDER THRESHOLD COVER	8893 A SILVER (1000) / 8813 A SILVER (1100) / 7601 A SILVER (1200) / 8893 A SILVER (1500)	1
25	SLIDER CLOSURE PANEL RAIL	7603 A SILVER	1
*26	SLIDER WALL MOUNT	7605 A SILVER/WHITE/BLACK/BRONZE	2
27	BOTTOM WALL CORNER BRACKET	8431 AF	2
*28	WALL MOUNT GLASS GUARD	8415 GREY/WHITE/BLACK	2
29	WALL MOUNT LOCKING SCREW	8266 AF	2
30	ADJUSTER CLAMP	8427 AF	2
31	M5 x 10 CSK SKT	1488 A SILVER	2
32	BS nsp 5mm DIA FOAM CORD INSERT	1752 AF	8
33	SLIDER DOOR GLASS	7649 M CLEAR/PLAIN (1000) / 7705 M CLEAR/PLAIN (1100) / 7653 M CLEAR/PLAIN (1200) / 7679 M CLEAR/PLAIN (1500)	1
34	SLIDER DOOR VERTICAL SEAL	8617 AF	2
35	WHITE PTFE ROD 6mm DIA	1306 AF	0.5
36	M4 X 4 SOCKET SET SCREW A2	1298 A SILVER	2
37	INSTALLATION DOOR SUPPORT	8592 BLACK	3
38	111 SLIDER GUIDE BLOCK ASSEMBLY	7363 AF	1
39	111 SLIDER ROLLER BLOCK ASSEMBLY	7362 AF	2
40	MATKI ONE RECESS SLIDER INSTALLATION INSTRUCTIONS	0942 AF	1
41	MATKI ONE SLIDER KIT OF PARTS	7365 A SILVER/ 7376 COPPER/ 7376 BRASS	1
*42	MATKI ONE SLIDER DISK KIT OF PARTS SILVER	7375 AF (SILVER/BLUE/GREEN/RED/GOLD/COPPER/BRASS) 7375 BLACK,WHITE)	1
43	1000 SLIDER VERTICAL SEAL	8819 CLEAR	1
44	1000 SLIDER VERTICAL SEAL	8820 CLEAR	1

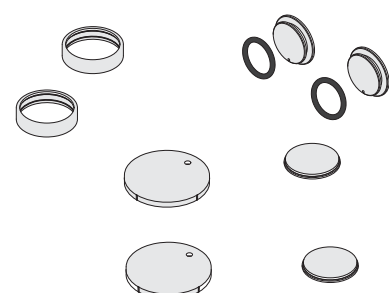
SLIDER KIT OF PARTS 1100,1200,1500 (7365) / 1000 (8923)

ITEM	DESCRIPTION	PART No	QTY
45	WALL PLUG	1818 AF	6
46	3mm AF BALL END	8622 AF	1
47	2mm ALLEN KEY	1286 AF	1
48	4mm ALLEN KEY	1166 AF	1
49	BRACKET HOLE COVER	8435 A SILVER	1
50	ROLLER BLOCK KEY	8572 AF	1
51	N.o8 x 38 PAN HEAD POZ S TAP ST/ST	1210 A SILVER	6
52	HANDLE WASHER	8439 GREY	2
53	HANDLE CAP WASHER	8257 A SILVER	2
54	HANDLE CENTRAL BAR	8250 A SILVER	1
55	M5 x 12 CSK SKT SCREW	1417 A SILVER	2
56	HANDLE SLEEVE	7645 A SILVER	2
57	CLEAR MATKI SEALANT 78g WITH LOGO	1967 AF	1



SLIDER DISK KIT OF PARTS

ITEM	DESCRIPTION	PART No	MODEL VARIATIONS		
			1000 8920 AF	1100/1200 7637 AF	1500 8922 AF
*58	ROLLER BLOCK BODY COVER CAP	8408 A SILVER	2	2	2
59	DECO DISK COVER RING	8252 A SILVER	2	2	4
*60	DECORATIVE PIVOT DISK	8652 A SILVER	2	2	4
*61	DECORATIVE HANDLE CAP	8400 A SILVER	1	2	2
62	DIN O-Ring 0140-20	8582 AF	1	2	2
63	MTK1 SLIDER & CURVED DISK DISPLAY PACK	4681 AF	1	1	1
64	MATKI CHROME EMBLEM	1005 CHROME	1	1	4
65	1000 HANDLE INNER	8456 AF	1		



MAINTENANCE

Matki Glass Guard Easy Clean Surface Protection (optional) and General Cleaning Guide

Cleaning Instructions

Matki Glass Guard allows water to form minute beads which easily trickle off the surface of the glass. This makes the glass easier to clean - the glass does not need to be cleaned as frequently, but it does require occasional maintenance. As less cleaning is required the use of detergents can be minimised thus helping to protect the environment. The lifespan of the Matki Glass Guard is dependant on the frequency of use of the shower and the degree of water hardness.

The combination of alkaline materials and humidity affects glass in an extremely aggressive way. Do not use bleach, alkaline, acid-based or aggressive and abrasive glass cleaners, detergents or household cleaning products on the glass or frames.

We recommend that glass is washed down with clean water and a soft clean cloth or sponge and dried off with a microfibre cloth.

The special coating is only present on the inside of the glass.

Matki Glass Guard is guaranteed for 2 years provided that the guidelines and cleaning instructions are followed.

Aluminium and Chrome parts should be cleaned with a mild non scratch household cleaner and a soft cloth or sponge.

Do not use acidic-based descaler products or products which are unsuitable for cleaning enamelled surfaces, including abrasive cleaners or cleaners containing bleach or solvents, as the products will effect the anodised framework. Under no circumstances use cleaners with a pH level exceeding 8.

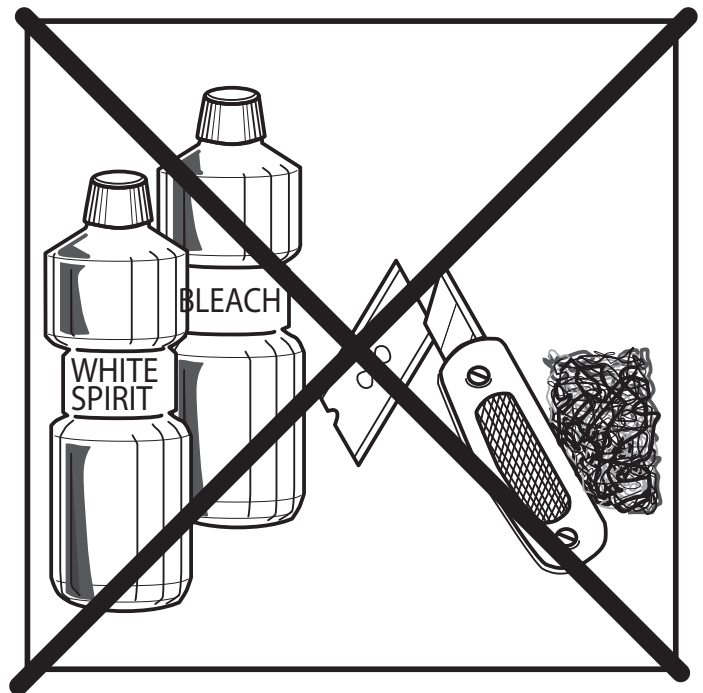
Matki does not recommend the use of 'Leave-on' shower cleaners on Matki Glass Guard Products.

Water Softeners and Glass Guard - Certain types of water softeners increase the alkalinity of the water due to a carry-over of Chloride during re-generation which can cause aggressive water spots on both untreated and Glass Guarded glass. If using a water softener we recommend a two-cylinder machine with automatic re-generation instead of a timer. If a single-cylinder water softener with timer is already installed it is recommended that after each shower excess water is removed from the glass with a squeegee or with a micro-fibre cloth.

Annual recommended maintenance - Matki recommend annually lubricating the barrel of the hinge with a lubricating spray such as WD-40 to remove dust build-up and to aid the movement of the hinge.



Wash down with clean warm water and a soft clean cloth or sponge.



Do not use bleach, alkaline or acid-based, aggressive or abrasive cleaning products.

Flash Bathroom Spray or Cif Bathroom Spray can be used on Matki Products. Read manufacturers label before using any cleaning materials.

IMPORTANT

Matki Glass Guard is guaranteed for 2 years. It is essential that the cleaning instructions are followed in order to maintain the hydrophobic properties of the glass coating. In the event of the failure to comply in any way with these instructions, any warranty or guarantee will be null and void.

MATKI PLC, CHURCHWARD ROAD, YATE, BRISTOL, BS37 5PL
TELEPHONE:01454 328816 (AFTER SALES) FAX:01454 328821 EMAIL: techsupport@matki.co.uk



matki | SHOWERING

13

Matki PLC, Churchward Road, Yate,
Bristol BS37 5PL

EN 14428:2008+A1