

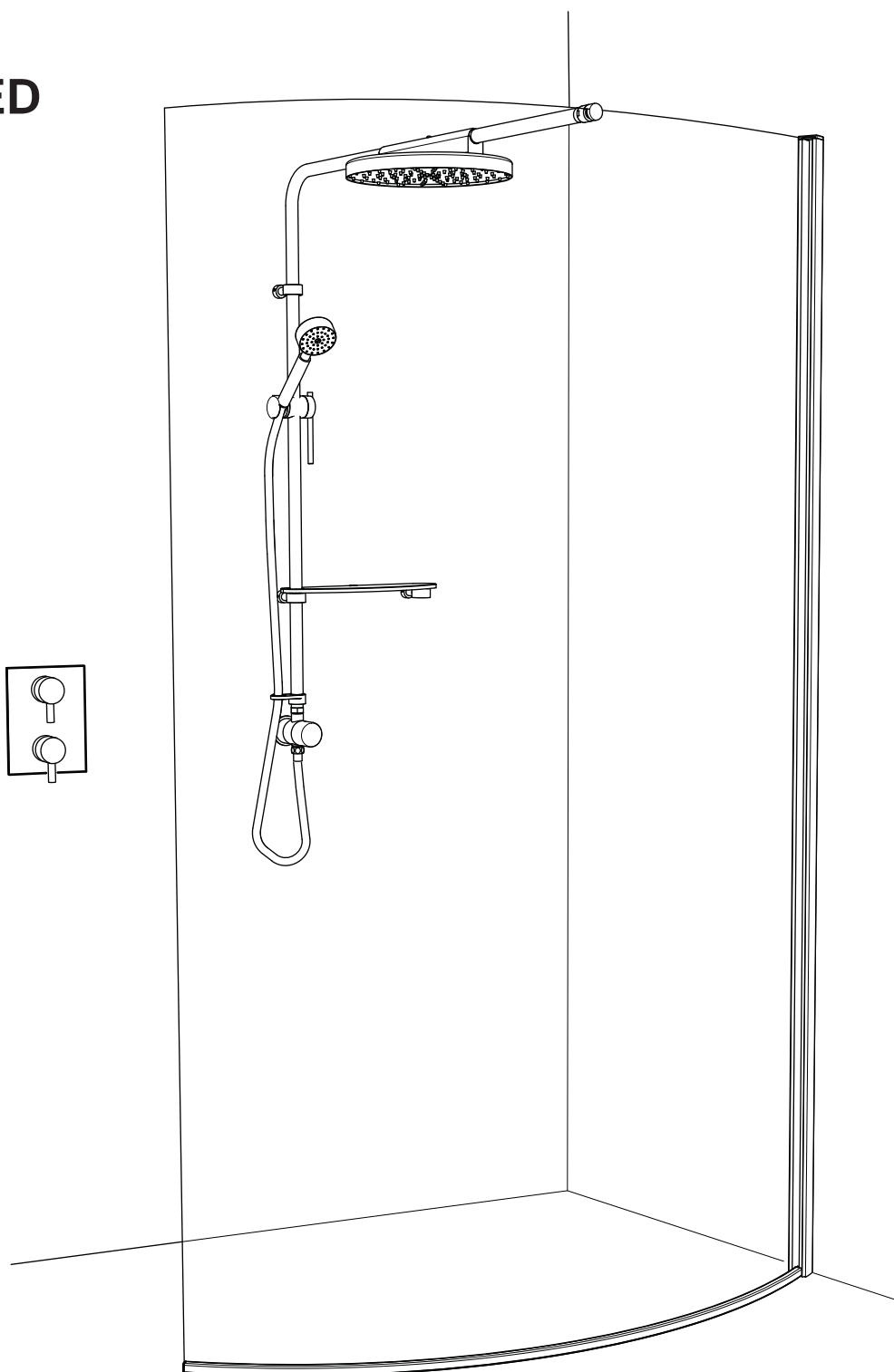
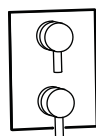
matki

SHOWERING

AC 1200 CURVED

INSTALLATION

PARTS LIST



MATKI PLC, CHURCHWARD ROAD, YATE, BRISTOL, BS37 5PL
TELEPHONE:01454 328816 (AFTER SALES) FAX:01454 328821 EMAIL:techsupport@matki.co.uk

IMPORTANT

Before disposing of carton and/or commencing assembly, please check all the parts to ascertain that none are missing and they are all undamaged. No claim for missing/damaged parts will be accepted once the packing carton has been disposed of and/or assembly has commenced.

In case of query contact your Stockist with details of model number and details of serial number.

Due to the weight of the surround we recommend that two people are available for assembly.

PREPARATION

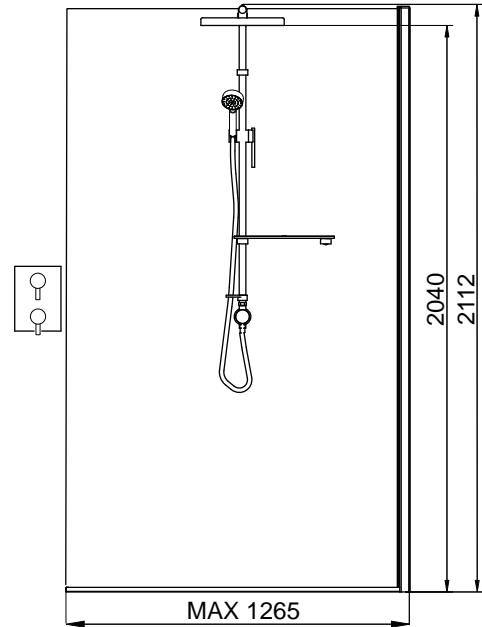
Please read complete installation instructions before fitting. **The surround assembly should be installed onto waterproof wall and floor covering.** Spray from the Shower may extend beyond the entrance and we recommend waterproofing of the adjacent area, sloping towards the drain position.

Carefully remove surround from carton, do not place glass on hard floor or expose edges to impact.

CAUTION: TEMPERED GLASS CANNOT BE CUT, POLISHED METAL AND CHROME CAN BE SCRATCHED.

TOOLS REQUIRED

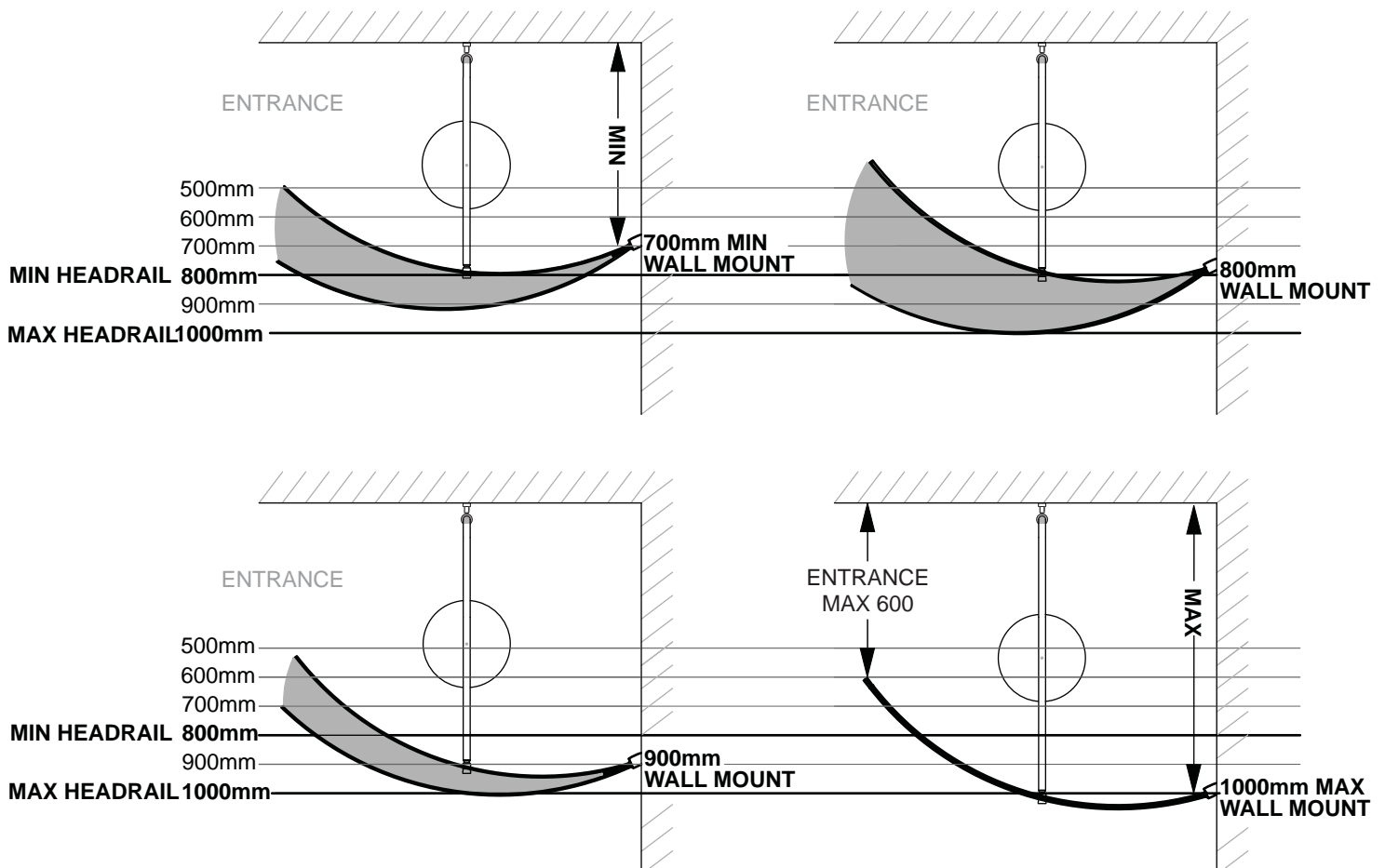
Masonry Drill bit 6mm, Tape Measure, Screw Drivers, Safety Glasses, Electric Drill, Level, Pencil, Adjustable Spanners x 2



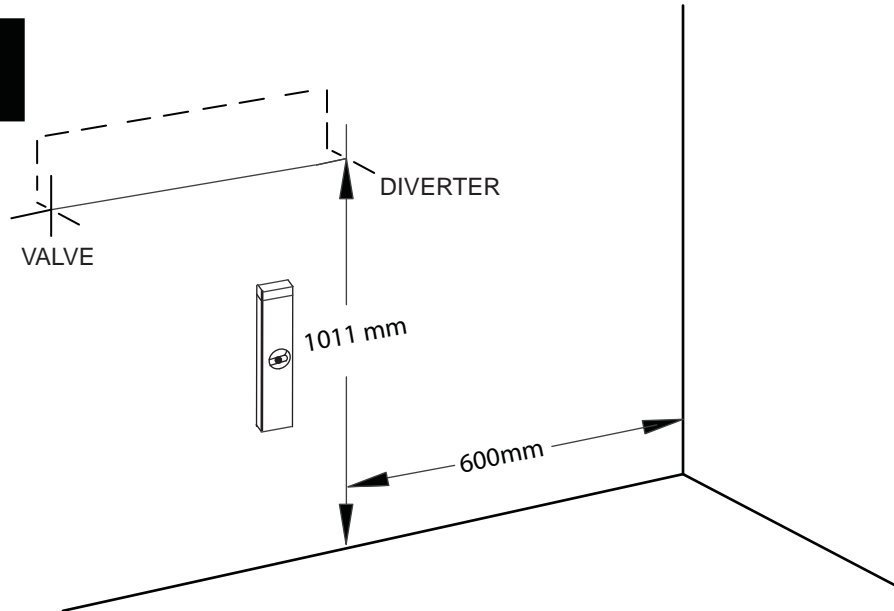
Dimensions are approximate due to nature of materials used
All dimensions are in millimetres.

DIMENSIONS

Please see below for a guide to the enclosure sizes that can be achieved. The diagrams shows a RH Curved Corner installation with the pivoting Wall mount assembly outside face positioned 700,800,900 and 1000mm from the corner. **Please note the minimum and maximum Headrail and Wall Mount extents.** Diagram also shows entrance size



STAGE 1

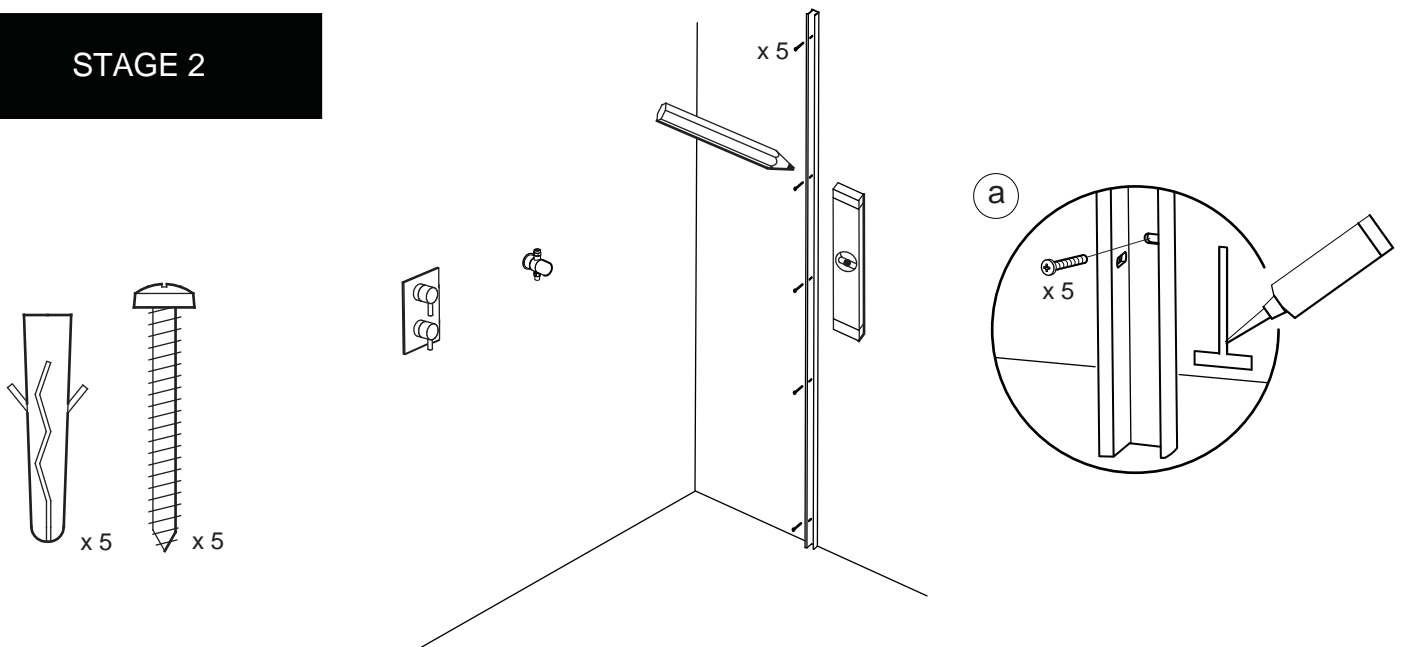


This stage is describing the positioning of the Diverter.

The position for the centre of diverter at the base of the overhead rail is measured from the floor. Measure 600mm (as a guide) horizontally and using a level, plumb 1011mm vertically up from the finished floor surface.

To line up the Shower Mixer On /Off control lever with the centre of the Diverter, The On /Off control lever should be positioned 1011mm vertically from the finished floor surface. Alternatively the Shower Mixer can be positioned where convenient. Please see separate instructions for the Diverter and Shower Mixer.

STAGE 2

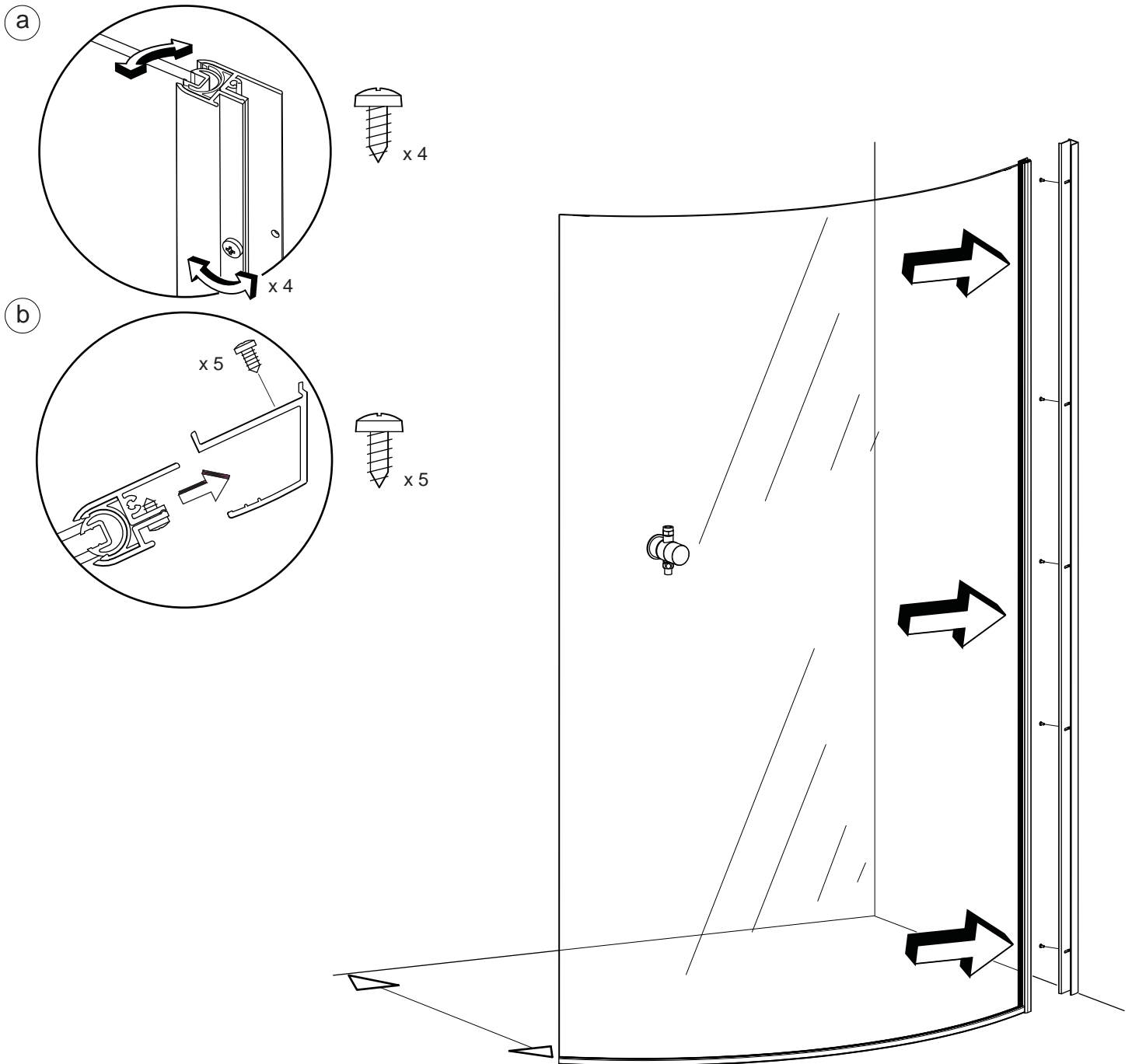


This stage is describing the Wall Mount installation.

Position the Wall Mount on to the wall in the desired position, (Please see 'Dimensions' on previous page. **Minimum distance to outside of Wall Mount is 700mm, maximum distance is 1000mm. Minimum distance of Headrail extension is 800mm, maximum distance is 1000mm**) Position the Wall Mount so that the adjustment slots on the side of the wall mount are facing inside the product.

Plumb the Wall Mount for upright and mark the fixing holes on the wall in the centre of the slots in the back face of the Wall Mount. Drill the fixing holes in the wall and insert the wall plugs. Clean the area. Apply silicon sealant to the area behind the Wall Mount between the floor and the tiles and 100mm up the wall, central to the width of the Wall Mount (2a). Fit the Wall Mount with the 5 No. 8 x 32mm Pan head screws (2a) (Kit of Parts).

STAGE 3



This stage is describing the fitting of the glass panel.

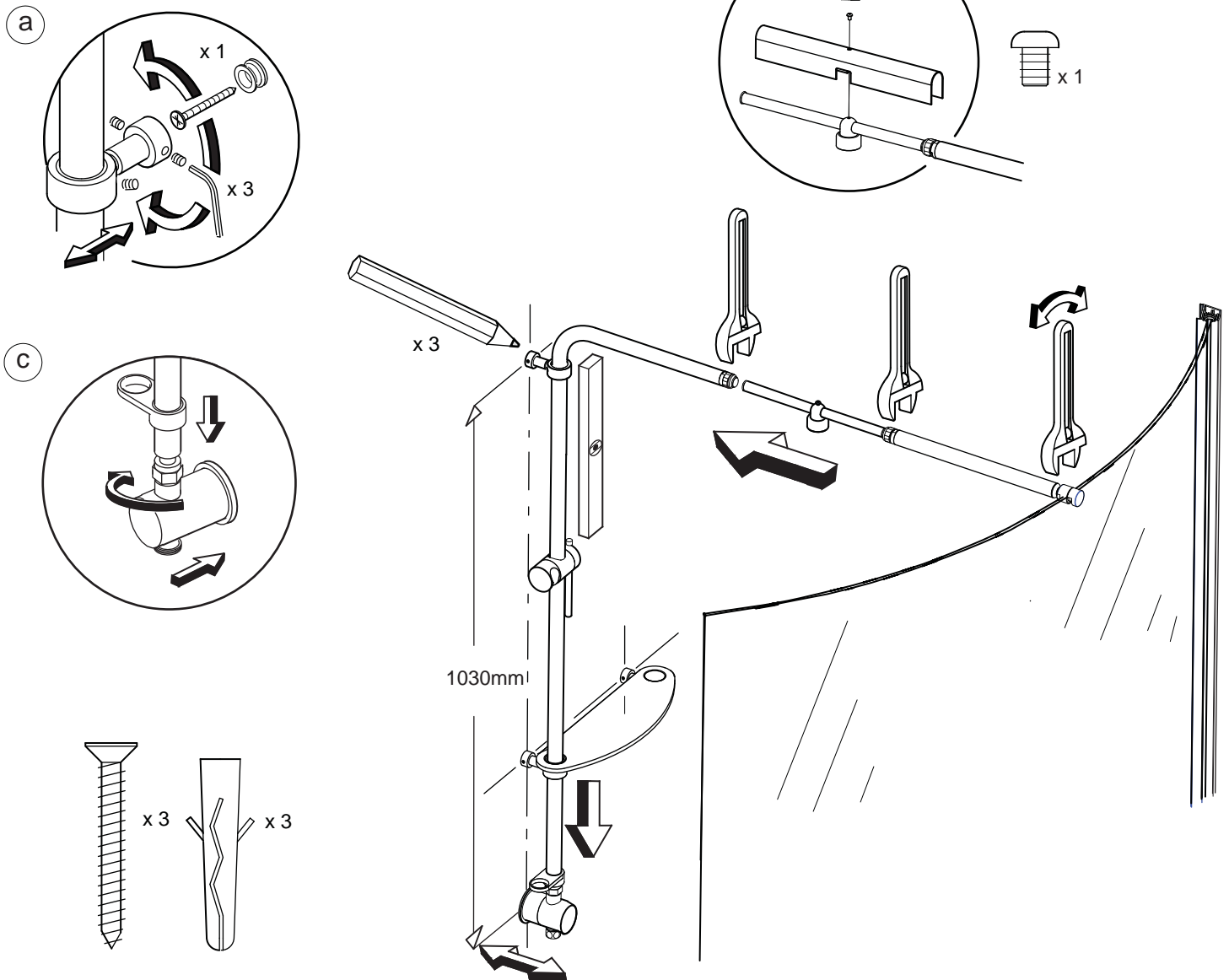
We recommend two people are available for this stage.

Rotate the Glass Clamp Extrusion to the desired angle by loosening the 4 No.8 x 9.5mm Pan head screws (3a). Once the correct angle of glass is achieved re-tighten the screws.

Carefully lower the glass panel down into the Wall Mount (horizontal track at bottom) and onto the floor (3b). Measure the entrance width of the enclosure to check the angle of the glass panel. Repeat stage (3a) and adjust angle if needed.

Secure the glass panel to the Wall Mount using the 5 No.8 x 9.5mm Pan head screws (3b).

STAGE 4



This stage is describing the fitting of the Overhead Support Tube.

Using a level, plumb and mark the position for the top Wall Bracket (as a guide) 1030mm up from the centre of the Diverter. Drill the fixing hole in the wall and insert the Wall Plug. Secure the Wall Plate to the wall using the No.8 x 32mm Csk Head screw (4a) Fit the Glass Shelf (see separate instructions)

Important: Please check that the the lower wall bracket fixing does not interfere with the plumbing of the Diverter inlets from the Shower Mixer adjust the dimension as required.

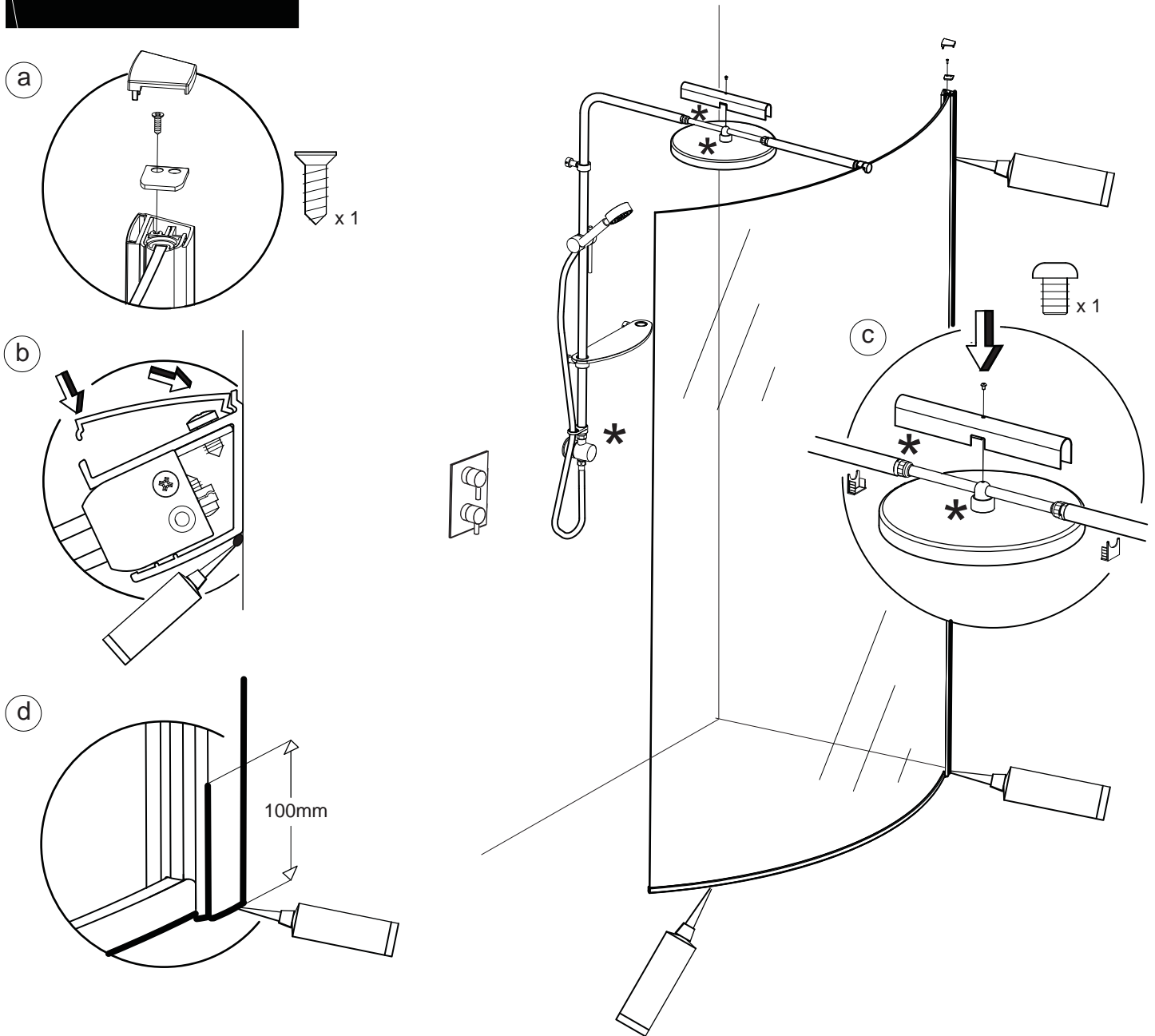
Remove the Cowling from the Telescopic tube using the M4 x 6mm Button head screw and set aside (4b). Assemble the Telescopic Tube in to the Overhead Support Tube.

Carefully fit the Overhead Support Tube onto the glass panel and into the Diverter ensuring the Handset Flex Loop is fitted on the support tube below the Shelf (4c) Adjust the Wall/ Shelf Brackets to the Wall plates and secure using the M5 x 5mm Socket Set screws (4a). Gently tighten the clamp around the top of the curved glass panel (4d).

Check the Overhead Support Tube for level. Centre the Telescopic tube between the front and back sections of the Overhead Support tube and tighten the joint between the front section of the Support Tube and the Telescopic tube to fix in place.

Tighten the compression joints where the Overhead Support Tube meets the Diverter (4c) and where it meets the Telescopic Tube. Screw on the Overhead Shower Head and tighten to create a compression joint.

STAGE 5



This stage is describing the testing of the compressions joints, fitting of the Caps, Covers and Silicon sealant.

Fit the Handset Flex to the bottom outlet of the diverter and pass the Flex through the Flex Loop then fit the Handset. Test the compression joints (marked with a * on main drawing).

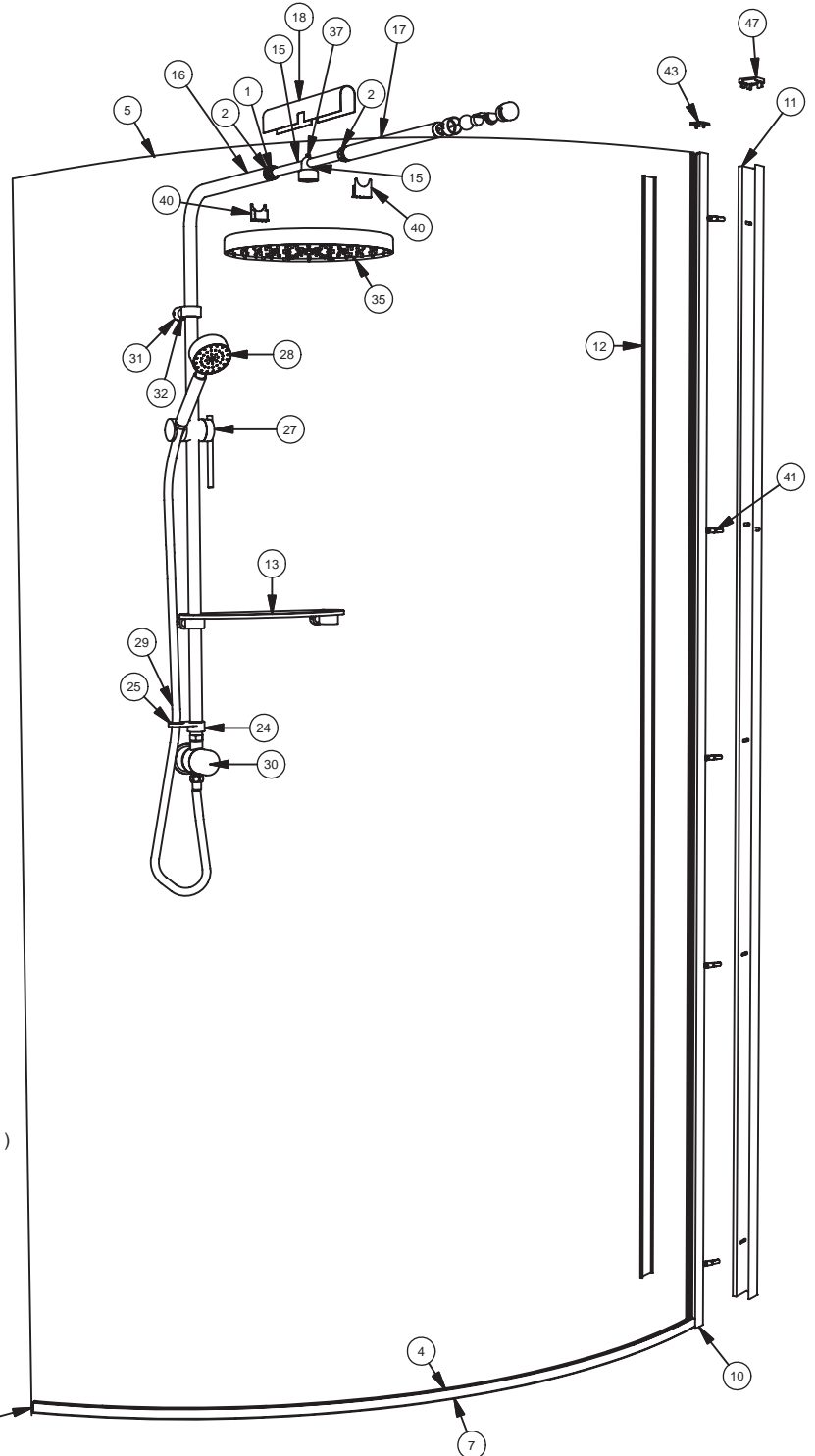
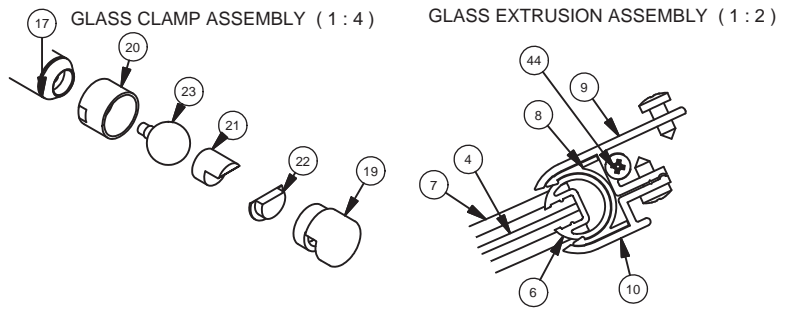
Fit the vertical frame cap using the No 6 x 12.7mm Csk head screw (5a). Fit the Wall Mount Cover (5b). Fit the Wall Mount Top Cap (5a),(Both LH and RH Top Caps are provided in the Kit of parts, use the appropriately handed cap)

Fit the Cowling using the M4 x 6mm Button Head Screw (5c). Fit the Cowling end caps (5c).

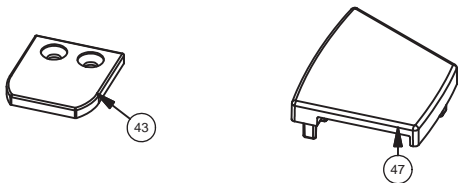
Apply a thin and even bead of silicon along all outside joints. Seal the joint on the outside between the Wall Mount and the Glass Clamp and 100mm up (5d) continue the silicon along the bottom edge of the Wall Mount and all the way up the outside of the extrusion between the Wall Mount and the tiles (5b,d). Apply a bead of silicon on the outside of Glass Horizontal frame in the recess provided and all the way along (5d). Masking tape can be used to achieve a tidy edge to the sealant. Remove the masking tape immediately and allow the silicon to cure for 24 hours before using the shower.

PARTS LIST

PARTS LIST AC 1200				
ITEM	DESCRIPTION	PART No.	QTY	LENGTH
1	COMPRESSION RING 15mm	*	2	
2	1/2" COMPRESSION RING NUT	*	2	
3	No8 PAN HEAD SCREW	1420 A SILVER	10	9.5 mm
4	AC GLASS GASKET	2222 CLEAR	1	1288 mm
5	CURVED GLASS	3926 M	1	
6	GLASS EXTRUSION	5138 A SILVER	1	2097.5 mm
7	GLASS HORIZONTAL TRACK	5184 A SILVER	1	1302 mm
8	GLASS EXTRUSION GASKET	2223 CLEAR	1	2103 mm
9	GLASS CLAMP EXTRUSION 1	5180 A SILVER	1	2103 mm
10	GLASS CLAMP EXTRUSION 2	5182 A SILVER	1	2103 mm
11	WALL MOUNT	5181 A SILVER	1	2103 mm
12	WALL MOUNT COVER	5185 A SILVER	1	2103 mm
13	AC ABSOLUTE SHELF		1	
14	GLASS EXTRUSION BOTTOM CAP	7503 A SILVER	1	
15	TELESCOPIC TUBE	6209 A SILVER	1	
16	HEADRAIL BACK	6207 A SILVER	1	
17	HEADRAIL FRONT	6208 A SILVER	1	
18	COWLING	6204 A SILVER	1	
19	CLAMP BODY	6213 AF	1	
20	BRACE NUT	6202 A SILVER	1	
21	CLAMP BODY GASKET	7509 BLACK	1	
22	CLAMP BODY WASHER 2	7510 BLACK	1	
23	BALL JOINT	6212 AF	1	
24	FLEX RETAINING LOOP	3452 A SILVER	1	
25	RETAINING LOOP BUSH	1873 WHITE	1	
26	WALL BRACKET SLEEVE	1872 WHITE	2	
27	SLIDER DEVICE	SC32229/01	1	
28	ABSOLUTE HAND SHOWER	2145S	1	
29	FLEXIBLE HOSE	FL8010	1	
30	DIVERTER ASSEMBLY	NEW DIVERTER	1	
31	WALL BRACKET ADJUSTER	3691 A SILVER	1	
32	WALL BRACKET	3692 A SILVER	1	
33	WALL PLATE	1485 AF	1	
34	M5 SOCKET SETSCREW	1502 A SILVER	3	6 mm
35	SHOWERHEAD 300	SO29553	1	
36	ABSOLUTE THERMO VALVE	2110	1	
37	M4 X 6mm SOCKET BUTTON HEAD	1518 A SILVER	1	6 mm
38	CURVED HORIZONTAL END CAP	7508 A SILVER	1	
	AC 1200 KIT OF PARTS	7307 AF		
39	No8 PAN HEAD SCREW	1471 A SILVER	5	31.8 mm
40	COWLING END CAP	7500 A SILVER	2	
41	WALL PLUG	1818 AF	6	
42	M4 X 6mm SOCKET BUTTON HEAD	1518 A SILVER	1	6 mm
43	GLASS CLAMP CAP	7502 A SILVER	1	
44	No6 CSK SCREW	1431 A SILVER	1	12.7 mm
45	No.8 CSK SCREW	1478 A SILVER	1	32 mm
46	ANGULAR WALL MOUNT CAP LH	7507 A SILVER	1	
47	ANGULAR WALL MOUNT CAP RH	7504 A SILVER	1	
48	ALAN KEY 2.5mm	1168 AF	1	
49	CLEAR SILICON SEALANT	1967 AF	1	
50	INSTALLATION INSTRUCTION	1090 AF	1	



GLASS CLAMP TOP CAP (1 : 2) WALL MOUNT TOP CAP RH (1 : 2)



We recommend that these instructions are handed to the user with a note of a date of purchase and model detail.
To order replacements quote: Part Description, Model, Part Number and Colour.

MAINTENANCE

Matki Glass Guard Easy Clean Surface Protection (optional) and General Cleaning Guide

Cleaning Instructions

Matki Glass Guard allows water to form minute beads which easily trickle off the surface of the glass. This makes the glass easier to clean - the glass does not need to be cleaned as frequently, but it does require occasional maintenance. As less cleaning is required the use of detergents can be minimised thus helping to protect the environment. The lifespan of the Matki Glass Guard is dependant on the frequency of use of the shower and the degree of water hardness.

The combination of alkaline materials and humidity affects glass in an extremely aggressive way. Do not use bleach, alkaline, acid-based or aggressive and abrasive glass cleaners, detergents or household cleaning products on the glass or frames.

We recommend that glass is washed down with clean water and a soft clean cloth or sponge and dried off with a microfibre cloth.

The special coating is only present on the inside of the glass.

Matki Glass Guard is guaranteed for 2 years provided that the guidelines and cleaning instructions are followed.

Aluminium and Chrome parts should be cleaned with a mild non scratch household cleaner and a soft cloth or sponge.

Do not use acidic-based descaler products or products which are unsuitable for cleaning enamelled surfaces, including abrasive cleaners or cleaners containing bleach or solvents, as the products will effect the anodised framework. Under no circumstances use cleaners with a pH level exceeding 8.

Matki does not recommend the use of 'Leave-on' shower cleaners on Matki Glass Guard Products.

Water Softeners and Glass Guard - Certain types of water softeners increase the alkalinity of the water due to a carry-over of Chloride during re-generation which can cause aggressive water spots on both untreated and Glass Guarded glass. If using a water softener we recommend a two-cylinder machine with automatic re-generation instead of a timer.

If a single-cylinder water softener with timer is already installed it is recommended that after each shower excess water is removed from the glass with a squeegee or with a micro-fibre cloth.



Wash down with clean warm water and a soft clean cloth or sponge.



Do not use bleach, alkaline or acid-based, aggressive or abrasive cleaning products.

Flash Bathroom Spray or Cif Bathroom Spray can be used on Matki Products.

Various specialist cleaning and glass dressing products are available from Ritec International Ltd Tel. 020 8344 8210 or www.ritec.co.uk.

Matki Plc is not connected with Ritec International Ltd in any way and the contact details are supplied for information only. Read manufacturers label before using any cleaning materials.

IMPORTANT

Matki Glass Guard is guaranteed for 2 years. It is essential that the cleaning instructions are followed in order to maintain the hydrophobic properties of the glass coating. In the event of the failure to comply in any way with these instructions, any warranty or guarantee will be null and void.

MATKI PLC, CHURCHWARD ROAD, YATE, BRISTOL, BS37 5PL
TELEPHONE:01454 328816 (AFTER SALES) FAX:01454 328821 EMAIL: techsupport@matki.co.uk



matki | SHOWERING

13

Matki PLC, Churchward Road, Yate,
Bristol BS37 5PL

EN 14428:2008+A1