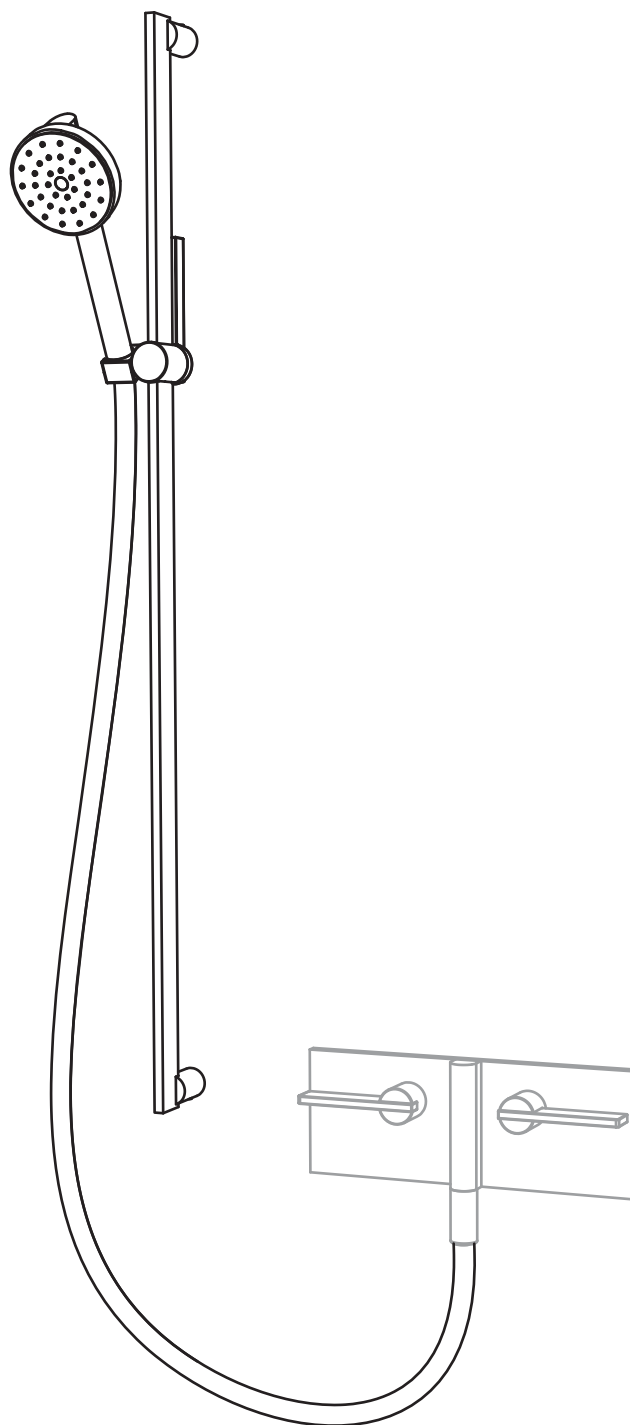


matki | SHOWERING

BLADE DESIGN EX26

INSTALLATION

PARTS LIST



MATKI PLC, CHURCHWARD ROAD, YATE, BRISTOL, BS37 5PL
TELEPHONE:01454 322 888 FAX:01454 315 284 EMAIL:techsupport@matki.co.uk

IMPORTANT

TOOLS REQUIRED

Masonry Drill Bit 6mm, Taper Measure, Screw Drivers, Safety Glasses, Electric Drill, Spirit Level, Pencil, Spanner.

Before disposing of carton and/or commencing assembly, please check all the parts to ascertain that none are missing and they are all undamaged. No claim for missing/damaged parts will be accepted once the packing carton has been disposed of and/or assembly has commenced.

In case of query contact your Stockist with details of model number and details of serial number.

PREPARATION

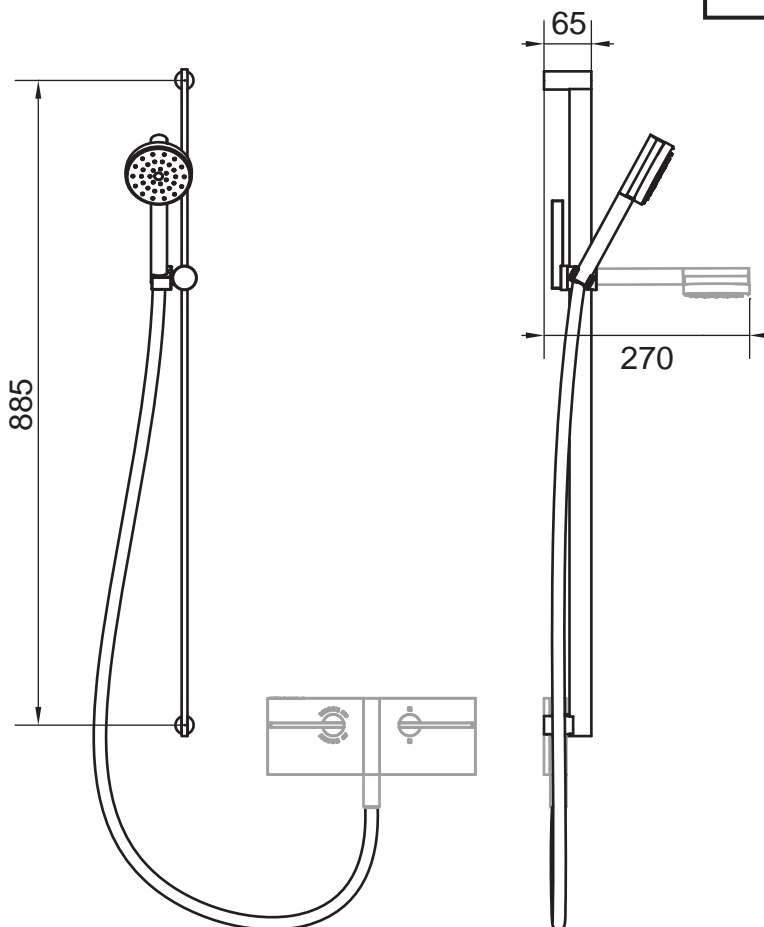
Please read complete installation instructions before fitting.

CAUTION: POLISHED METAL AND CHROME CAN BE SCRATCHED.

DIMENSIONS

Before plumbing the outlets for the Matki Elixir product you will need to determine the height of the Hand Shower. Important, for inward opening shower doors ensure the doors do not collide with any Showerheads!

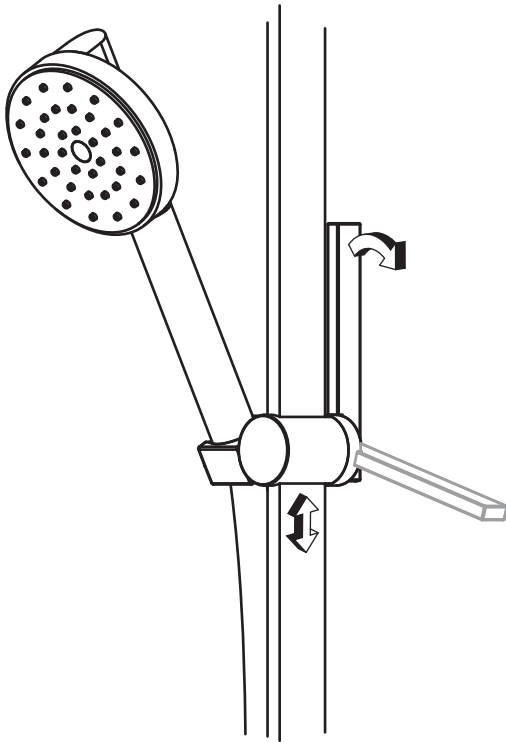
The Riser Rail may need to be raised for a taller person. Ensure that any spray from the Showerhead will be contained by the Shower Enclosure.



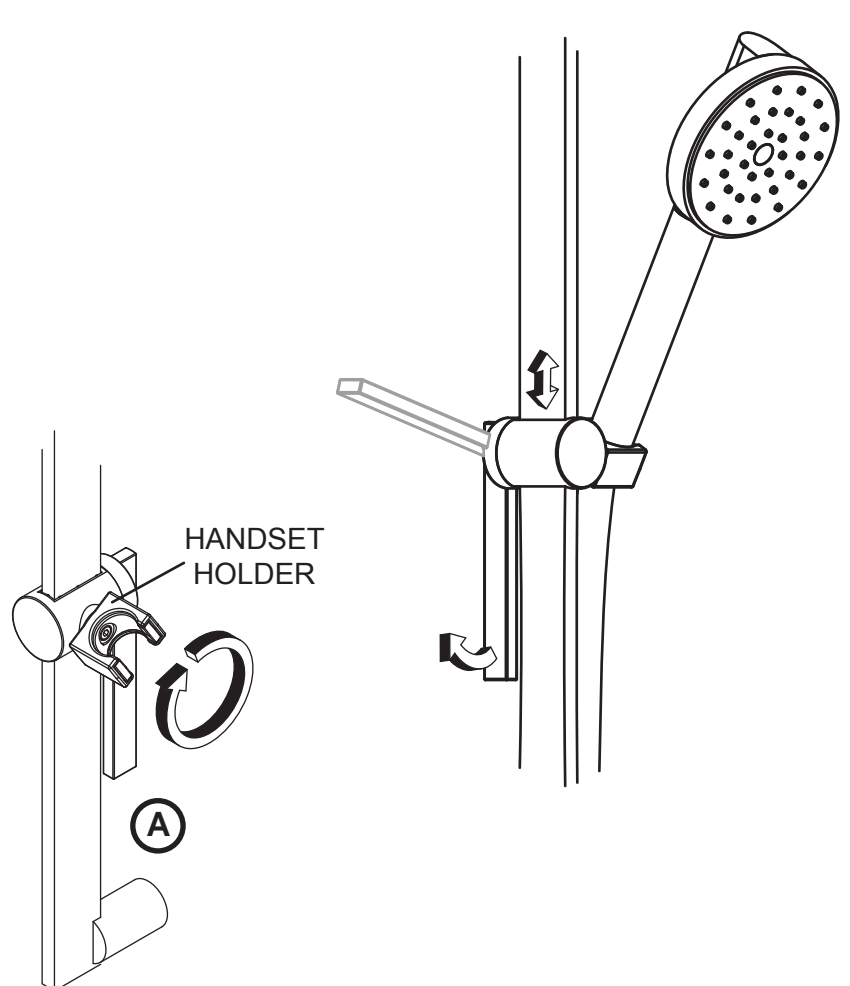
Dimensions are approximate. All dimensions are in mm.

STAGE 1

FACTORY FITTED
LEFT HAND HANDSET
HOLDER



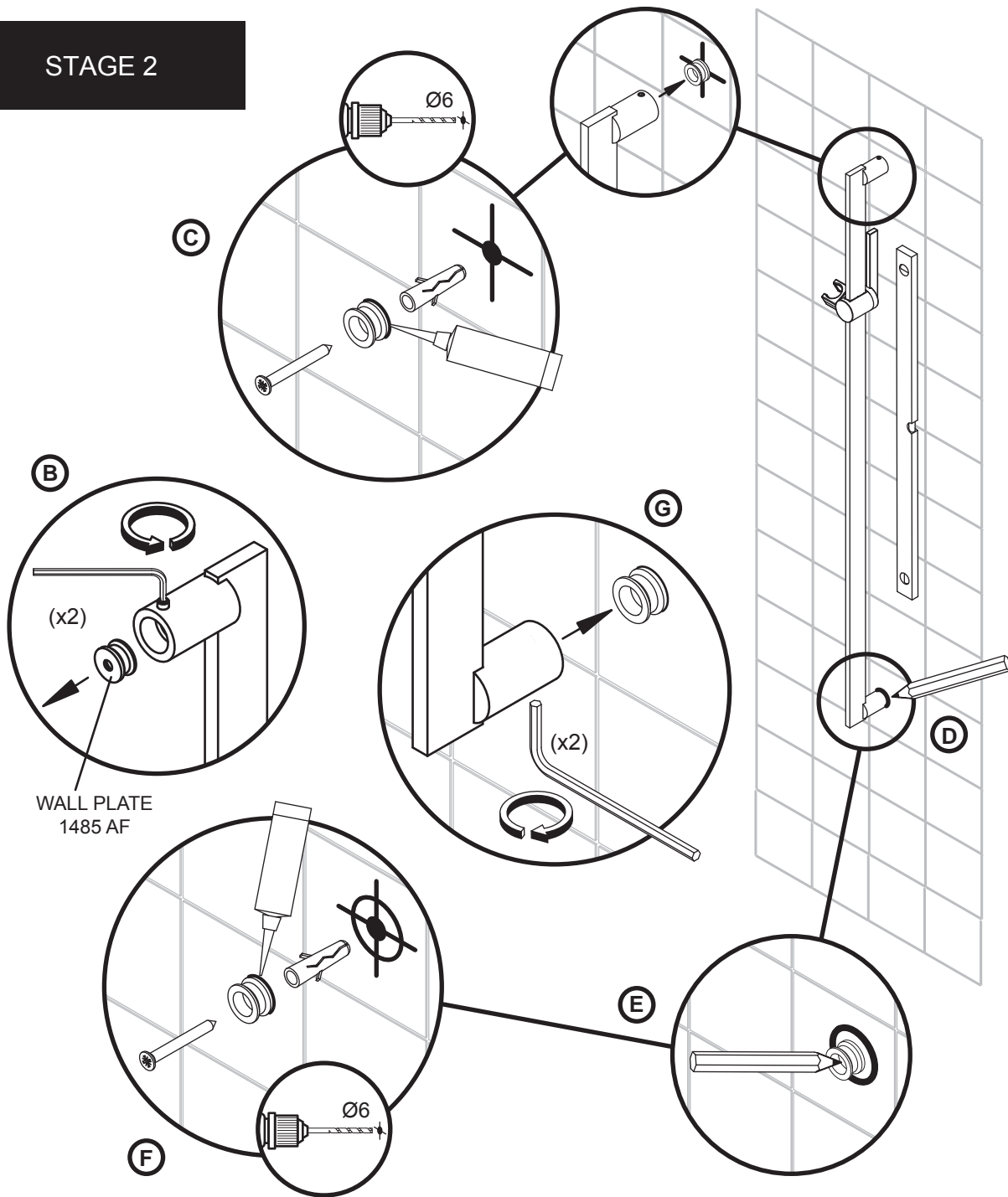
CUSTOMER ALTERED
RIGHT HAND HANDSET
HOLDER



This stage describes changing the Riser Mechanism handset holder from Left Hand to Right Hand.

- Depending on preference, the Hand Shower can be mounted either side of the riser rail. To do this, rotate the whole Riser Rail assembly 180° before fixing to the wall, and adjust the Handset Holder ready to accept the Handset (A).

STAGE 2



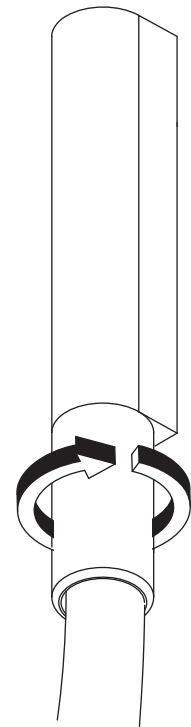
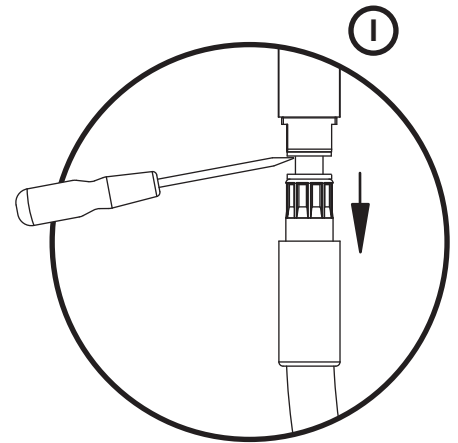
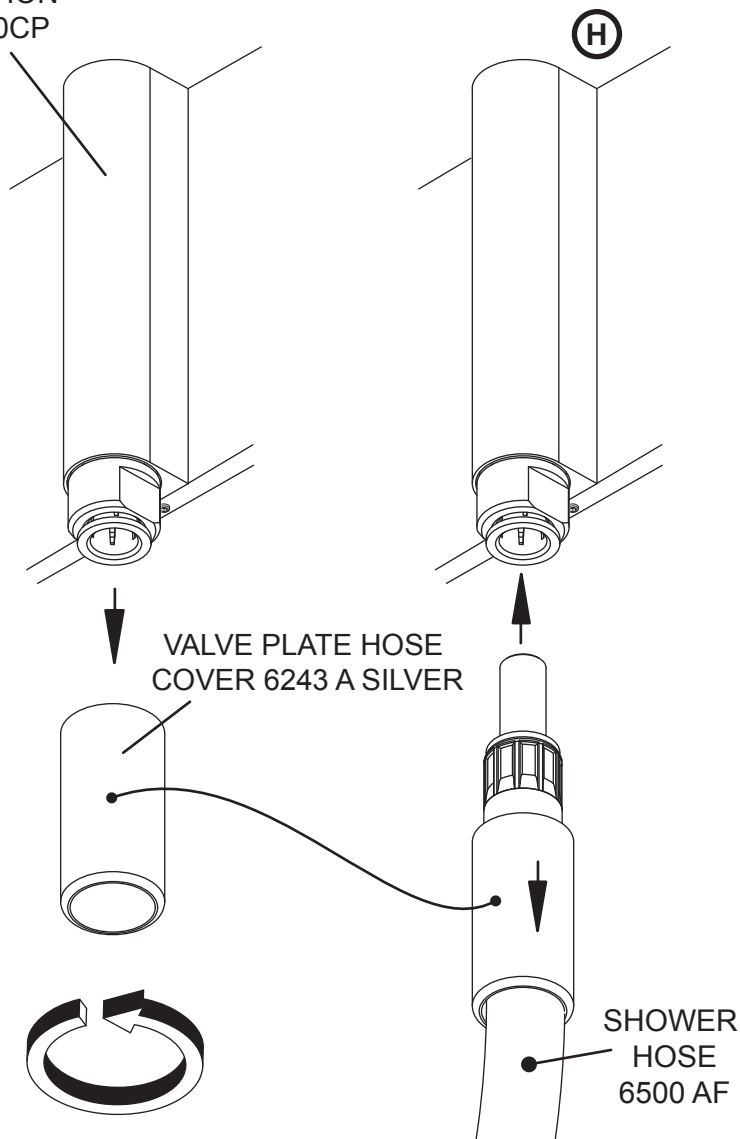
This stage describes the fitting of the Riser Rail.

- Remove the 2x Wall Plates 1485 AF from either end of the Riser Rail (B). Drill and mount the top Wall Plate 1485 AF at the desired height and silicon the back face of the plate (C).
- Temporarily hold the Riser Rail onto the fixed wall plate and level for upright using a spirit level. Once level, mark around the Bottom Riser Rail Bracket 6239 AF (D). Remove Riser Rail and carefully put to one side. Centre the remaining Wall Plate 1485 AF in this marked area and make a second, central mark through the Wall Plate 1485 AF (E) - this determines the location for the remaining Wall Plug.
- Drill and mount the remaining Wall Plate 1485 AF- and silicon the back face of the plate (F).
- Finally fit the Riser Rail to the Fixed Wall Plates and tighten M5 socket set screw in riser rail bracket.

STAGE 3

NOTE* SEE SEPARATE ELIXIR MIXER FITTING INSTRUCTIONS.

VALVE PLATE
JUNCTION
2/6040CP



This stage describes fitting the Push-Fit Hose to the fitted Valve Plate.

- Unscrew the Valve Plate Hose Cover 6243 A Silver from the fitted Valve Plate Junction (see separate Shower Mixer instructions).
- Slide the Valve Plate Hose Cover 6243 A Silver onto the Shower Hose 6500 AF (threaded end up) and push the Shower Hose end all the way into the Push-Fit Fitting (H), finally screw the Valve Plate Hose Cover 6243 A Silver back on
- The Push-Fit system can easily be released by holding the white plastic part of the push-fit assembly up against the stainless-steel body, and pulling out the hose (I).

STAGE 4

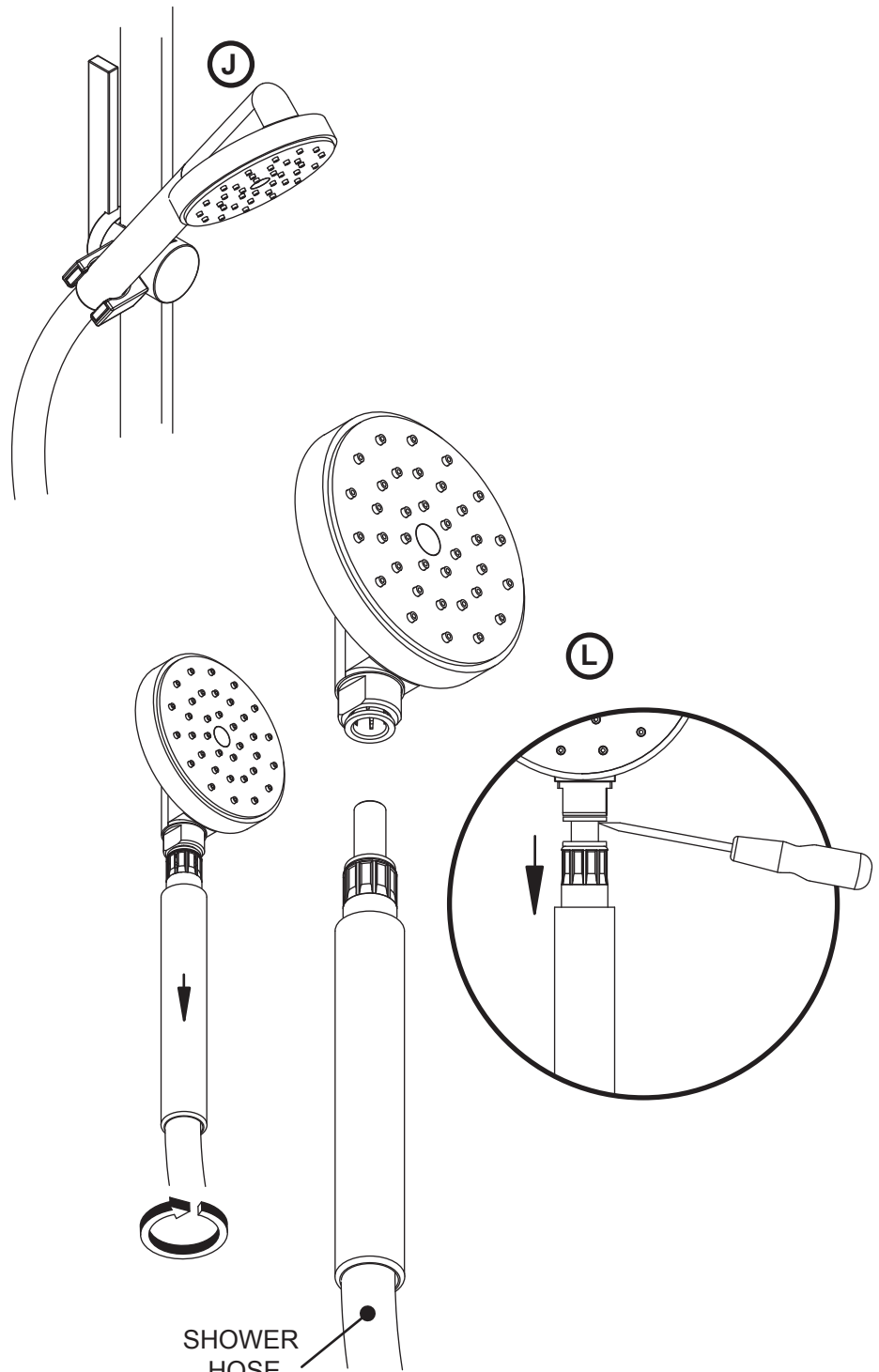
HIGH FLOW
ECO

(K)

(J)

(L)

SHOWER HOSE
6500 AF



This stage describes the fitting and operation of the Hand Shower.

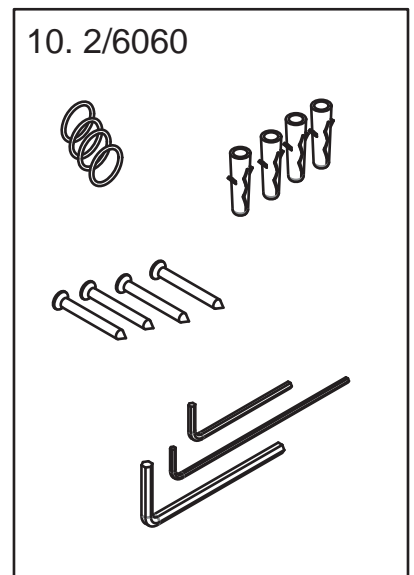
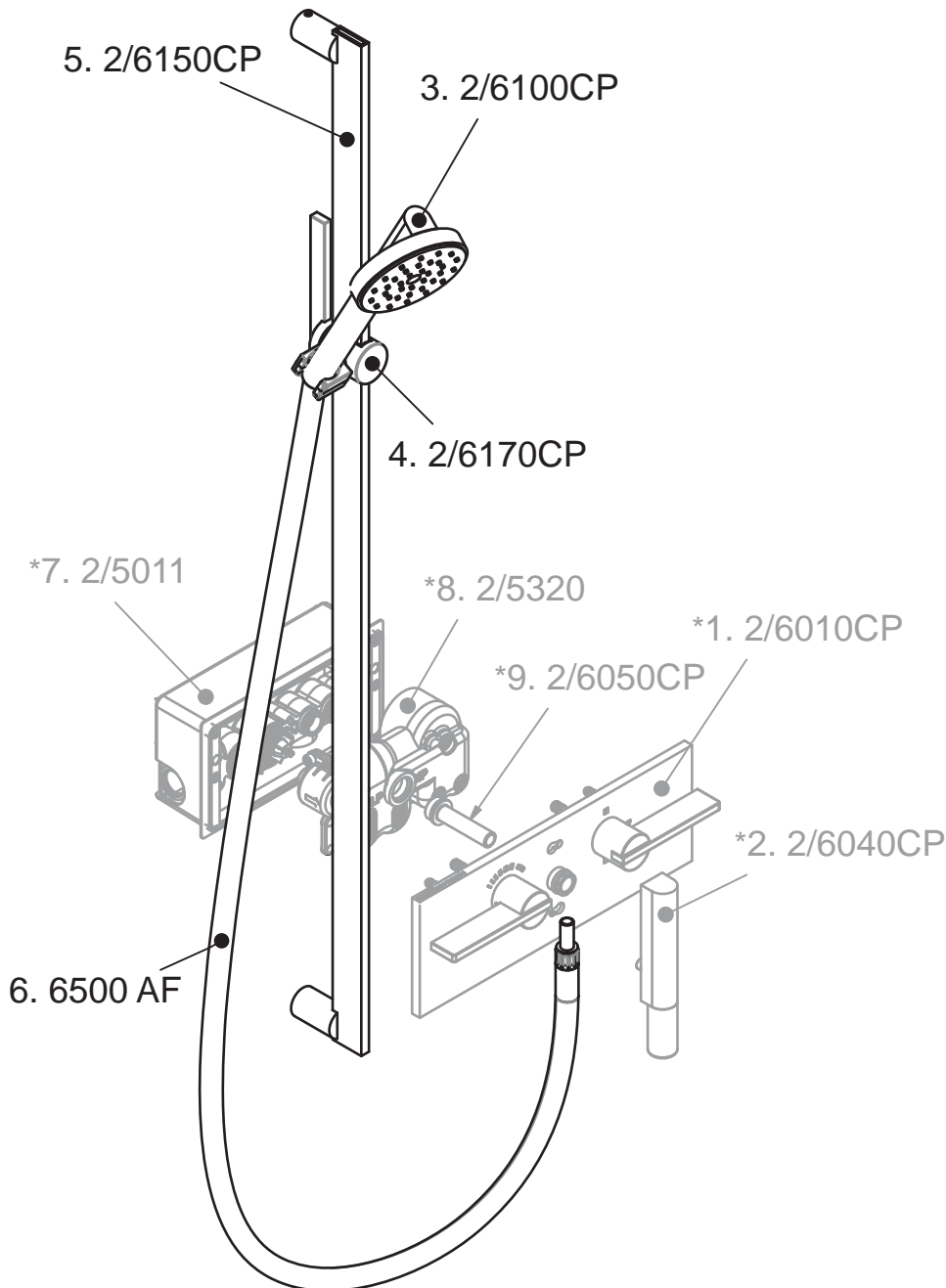
- Slot the Hand Shower into the Riser Mechanism (J). High Flow and Eco settings can be achieved by rotating the shower head left/right respectively (K).
- To remove the Hand Shower from the shower hose, unscrew the handle from the body. The Push-Fit system can easily be released by holding the white plastic part of the push-fit assembly up against the stainless-steel body, and pulling out the hose (L).

PARTS LIST

MODEL EX26

SUB-ASSEMBLY PARTS LIST FOR MODEL EX26			
ITEM	DESCRIPTION	PART No.	QTY
*1	EX26/29 BLADE VALVE PLATE ASSY	2/6010CP	1
*2	EX26, EX29 BLADE VALVE JUNCTION	2/6040CP	1
3	BLADE HANDSET ASSEMBLY	2/6100CP	1
4	EX26, EX29 RISER MECHANISM ASSY	2/6170CP	1
5	EX26 RISER RAIL	2/6150CP	1
6	140 PUSH-FIT FOILED HOSE	6500 AF	1
*7	CONCEALED MANIFOLD AND WALL BOX	2/5011	1
*8	BASIN CONCEALED VALVE BODY ASSEMBLY	2/5320	1
*9	FLEX OUTLET ADAPTER ASSEMBLY	2/6050CP	1
10	BLADE GENERIC PARTS KIT	2/6060	1

* GREY ILLUSTRATION/TEXT INDICATES ELIXIR MIXER/BLADE DESIGN COMPONENTS - SEE SEPARATE FITTING INSTRUCTIONS.



matki | S H O W E R I N G

MAINTENANCE

General Cleaning Instructions

All Chrome parts should be cleaned with a mild non scratch household cleaner and a soft cloth or sponge.

Do not use acidic-based descaler products or products which are unsuitable for cleaning enamelled surfaces, including abrasive cleaners or cleaners containing bleach or solvents, as the products will effect the anodised framework. Under no circumstances use cleaners with a pH level exceeding 8.

We recommend that these instructions are handed to the user with a note of date of purchase, model details. To order replacements quote: Part Number, Model, Part Description.

Flash Bathroom Spray or Cif Bathroom Spray can be used on Matki Brassware Products. Read manufacturers label before using any cleaning materials.

MATKI PLC, CHURCHWARD ROAD, YATE, BRISTOL, BS37 5PL

TELEPHONE:01454 322 888 FAX:01454 315 284 EMAIL:techsupport@matki.co.uk