

# 'EASY-PLUMB' SHOWER TRAY INSTALLATION INSTRUCTIONS

## PAGE 1

PLEASE READ INSTRUCTIONS IN FULL BEFORE COMMENCING INSTALLATION

### PRIOR TO INSTALLATION

Before commencing with the installation, the installer must refer to the guidance supplied with the shower tray regarding the requirements to check for quality and defects. The manufacturer will not be held responsible for the costs of removal or replacement of a shower tray or any other costs incurred as a result of the shower tray having a defect, if said defect was identifiable prior to installation. The installation should be carried out by a suitably skilled trades person such as a plumber. Check the weight of the shower tray. If necessary, use more than one person to assist in lifting.

**INSTALLATION OF THE SHOWER TRAY WILL BE TREATED AS ACCEPTANCE OF QUALITY.**

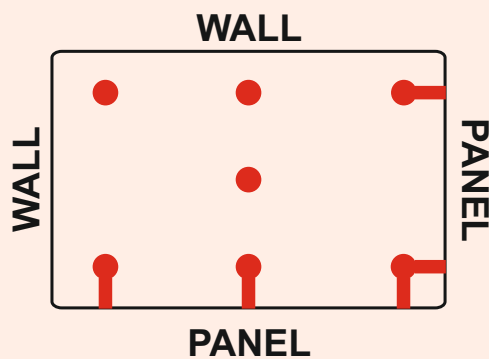
### EASY-PLUMB COMPONENTS

The 'Easy-Plumb' option allows the shower tray to be raised on feet to permit easy installation and access of the waste drain. Front and side panels are supplied as necessary.

An appropriate quantity of feet have been supplied to give sufficient support to the shower tray. Brackets and magnetic tape are also supplied to give support to the panel.

It is important to note that the span between feet should be no greater than 1000mm and all corners of the shower tray should be supported. Figure 1 details a common arrangement of feet. It also details which feet require brackets in order to support the panel.

Figure 2 details how to apply the magnetic tape to the brackets and how to attach the brackets to the feet where necessary.



#### TO SUIT SIZES:

1400 x 700  
1400 x 800  
1400 x 900  
1500 x 700  
1500 x 800  
1500 x 900  
1600 x 700  
1600 x 800  
1600 x 900  
1700 x 700  
1700 x 800  
1700 x 900

figure 1, Common Feet and Panel Configurations

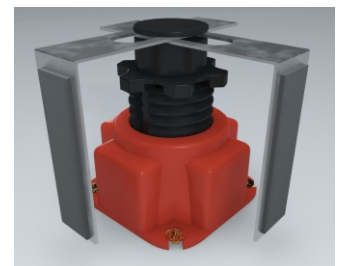
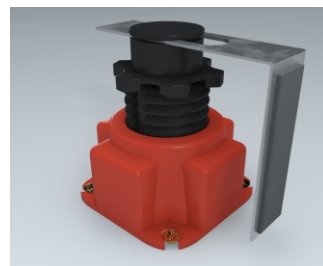


figure 2, Foot, Bracket and Magnetic Tape Assembly

Continued on other side...

# 'EASY-PLUMB' SHOWER TRAY INSTALLATION INSTRUCTIONS

## PAGE 2

PLEASE READ INSTRUCTIONS IN FULL BEFORE COMMENCING INSTALLATION

### INSTALLATION INSTRUCTIONS

Note that this shower tray is suitable for installation on both wooden and concrete floors. If fitting to a wooden floor, it is recommended that the base be made from marine ply as it resists delamination under humid conditions.

A drainage pipe must be installed and positioned appropriately before the installation of the shower tray can commence. As the shower tray is raised on feet, the waste pipe can be fitted above floor level.

Please note and follow the manufacturers instructions when installing the waste trap.

- **Prior to fitting the tray, please check that it drains correctly.**
- **Level the tray around the rim, place a bowl under the tray and pour in water.**
- **Due to surface tension, large droplets of water will remain but large pools should not be evident.**

**1.** The drainage pipe and bottom section of the waste trap should be positioned so that the waste trap will mate comfortably to the shower tray without being put under undue stress or tension. Ensure that the waste trap is fixed correctly to the drainage pipe and that there are no leaks at the joint. See figure 3.

**2.** Remove all packaging from the shower tray including the thin protective film and inspect for defects as detailed in the section 'PRIOR TO INSTALLATION'.

**3.** Apply the magnetic side of the tape to the metal brackets and fit to the feet as appropriate to support the panel. **Do not remove the film on the adhesive side of the tape at this stage.**

**4.** Position the feet on the floor so that the shower tray is sufficiently supported as detailed in the section 'EASY-PLUMB COMPONENTS' on page one. Position so that the brackets will contact the panels to provide support. When satisfied with the layout, the feet can then be permanently fixed to the floor using screws.

**5.** Adjust the feet to an appropriate height to accommodate the panels. Place the shower tray into final position and adjust the feet so that the shower tray is level and the panels can be fitted. See figure 4.

**6.** Panels can be fitted prior to or after tiling. The panels will require trimming to the appropriate length depending on the installation environment. The panels should be fitted so that they are snug to the supporting brackets and flush with the sides of the tray. When satisfied with the length of the trimmed panels, the film can be removed from the adhesive side of the magnetic tape. Carefully place the panels into final position and press firmly to fix the panels to the adhesive. White silicone can also be used to seal and secure the panels. See figure 5.

**7.** Now that the shower tray is in final position, the rest of the waste trap can be fitted as per the manufacturers instructions. Ensure that there are no leaks between the shower tray and the shower trap.

**8.** The shower tray must be checked a final time for drainage. If the shower tray fails to drain water suitably, then double check that it is level. **Tiles / panelling / shower doors / screens or any other fixtures relating to the shower area must not be fitted if the shower tray does not drain suitably.**

**9.** Before tiling/panelling walls, any gap between the tray and walls must be filled with silicone sealant flush to the top of the tray. See figure 6.

**10.** Once drainage, water tightness and general quality of the shower tray is determined to be acceptable, the installation is complete.



Figure 3



Figure 4



Figure 5



Figure 6

### USER AND MAINTENANCE INSTRUCTIONS

Users, designers and installers should take note that the surface of the shower tray will show an increase in the potential for slipping when wet. This is particularly the case when soap, shampoo, bath oil, etc. are used.

The shower tray should be cleaned after every use using only soap, water and a soft cloth.

Do not use abrasives, bleaches, hair dyes or other chemicals likely to discolour the shower tray.



BS EN 14527:2006+A1:2010 - CL1

Shower tray made of  
Acrylic Capped ABS, Resin Bonded Stone

Intended Use: Personal Hygiene  
Cleanability: Pass Durability: Pass