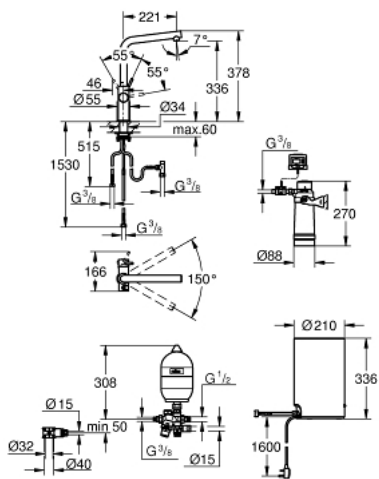
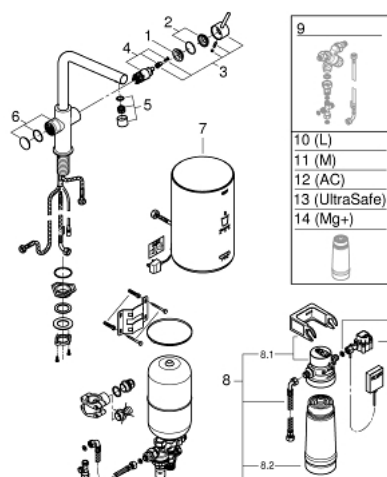


30 341 001 **GROHE RED TAP AND M SIZE BOILER**

PRODUCT DESCRIPTION

- Consisting of:
- **GROHE Red Duo single-lever sink mixer**
- monobloc installation
- L-spout
- GROHE ChildLock push buttons for kettle hot water
- TÜV certified triple electronic safeguards against accidental activation of boiling water
- **GROHE StarLight** chrome finish
- 28 mm ceramic cartridge with **GROHE SilkMove**
- insulated tubular spout
- swivel area 150°
- separate water ways
- flexible connection hoses
- connection for GROHE Red boiler
- **GROHE Red boiler M size**
- reservoir for kettle hot and hot water
- 3 litre 99° C kettle hot water
- 4 litre total capacity
- required inlet pressure: 1-7 bar
- with flexible connection hose and outlet for kettle hot water
- CE approved
- power supply 230 V 50 Hz
- power consumption 2100 W
- standby power consumption 15 W
- energy efficiency class A
- GROHE Red filter set
- for protection of the boiler from limescale
- Capacity 600 L at 20° dKH
- 5 phase filter
- flow rate measuring unit

30 341 001 GROHE RED TAP AND M SIZE BOILER



SPARE PARTS

- 1: retaining ring (Order-nr. 07419000)
- 2: Shield for cross handle (Order-nr. 46581000)
- 3: Lever (Order-nr. 46957000)
- 4: Cartridge (Order-nr. 46580000)
- 5: Flow restrictor (Order-nr. 13999000)
- 6: Operating unit (Order-nr. 46997000)
- 7: Boiler Size M (Order-nr. 40842001)
- 8: Filter with filter head (Order-nr. 40438001)
- 8.1: Filter Head (Order-nr. 64508001)
- 8.2: Filter S-Size (Order-nr. 40404001)
- 9: Mixing valve (Order-nr. 40841001)*
- 10: Filter L-Size (Order-nr. 40412001)*
- 11: Filter M-Size (Order-nr. 40430001)*
- 12: Activated carbon filter (Order-nr. 40547001)*
- 13: UltraSafe filter (Order-nr. 40575001)*
- 14: Magnesium+ Filter (Order-nr. 40691001)*

* Optional accessories