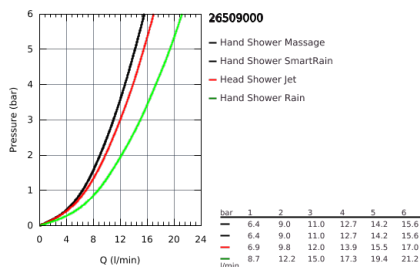
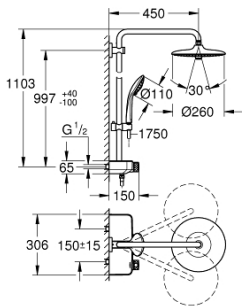


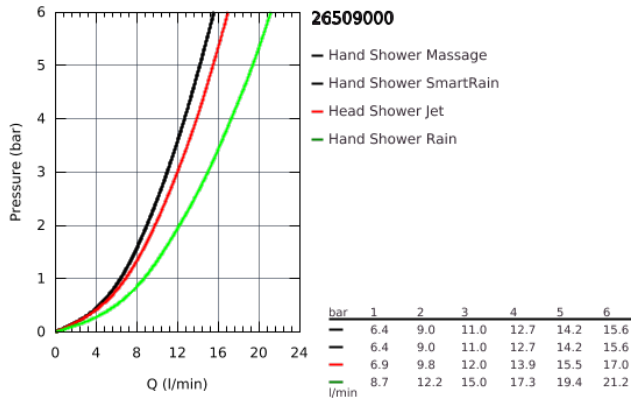
## 26 509 000 SHOWER SYSTEM WITH THERMOSTAT FOR WALL MOUNTING



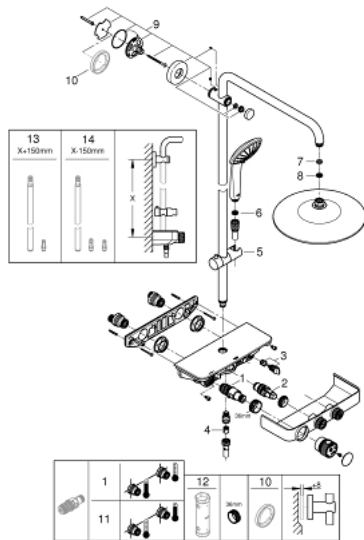
### PRODUCT DESCRIPTION

- Consisting of:
- horizontal 450 mm shower arm
- upper bracket adjustable for minimal adaption to existing drilling holes
- exposed SmartControl thermostat
- allows change between:
- head shower Euphoria 260 (26 455)
- 3 spray patterns:
- Rain, SmartRain, Jet
- with ball joint
- rotation angle  $\pm 15^\circ$
- hand shower Euphoria 110 Massage, spray plate white (27 221 001)
- 3 spray patterns:
- Rain, SmartRain, Massage
- adjustable height via gliding element
- Silverflex shower hose 1750 mm (28 388 000)
- **GROHE DreamSpray** perfect spray pattern
- **GROHE StarLight** chrome finish
- **GROHE CoolTouch** prevents scalding on hot surfaces
- **GROHE TurboStat** compact cartridge with wax thermoelement
- GROHE ProGrip with knurl structure
- **GROHE EcoJoy** technology for less water and perfect flow
- - GROHE SafeStop at 38°C
- **GROHE SafeStop Plus** optional temperature limiter at 43°C included
- 
- **GROHE SmartControl** push for ON-OFF, turn for volume adjustment from EcoJoy to full flow
- integrated **GROHE EasyReach** shower tray
- **SpeedClean** anti-limescale system
- **Inner WaterGuide** for a longer life
- **Twistfree** preventing the hose from twisting
- suitable for instantaneous heaters from 18 kW/h
- minimum flow rate 7 l/min.

## 26 509 000 SHOWER SYSTEM WITH THERMOSTAT FOR WALL MOUNTING



## 26 509 000 SHOWER SYSTEM WITH THERMOSTAT FOR WALL MOUNTING



### SPARE PARTS

- 1: Thermostatic compact cartridge 1/2" (Order-nr. 47439000)
  - 2: Cartridge (Order-nr. 48297000)
  - 3: Non-return valve (Order-nr. 49069000)
  - 4: Non-return valve (Order-nr. 08565000)
  - 5: Sliding piece (Order-nr. 48177000)
  - 6: Strainer (Order-nr. 0700200M)
  - 7: Fibre seal dia. Ø 18,5 x Ø 12 x 2 (Order-nr. 0138900M)
  - 8: Strainer (Order-nr. 48007000)
  - 9: Outlet shower holder (Order-nr. 48279000)
  - 10: Spacer (Order-nr. 27180000)\*
  - 11: GROHE TurboStat cartridge 1/2" (Order-nr. 47175000)\*
  - 12: Socket Spanner (Order-nr. 49059000)\*
  - 13: Shower system pipe for retrofitting (Order-nr. 48499000)\*
  - 14: Shower system pipe for retrofitting (Order-nr. 48498000)\*
- \* Optional accessories